

Volume 8

January 2012

GIT

EMEA Edition

SECURITY

MAGAZINE FOR SAFETY AND SECURITY

SeeTec
Software for Video Security

www.seetec.eu

1

79 824



Intersec Dubai 2012

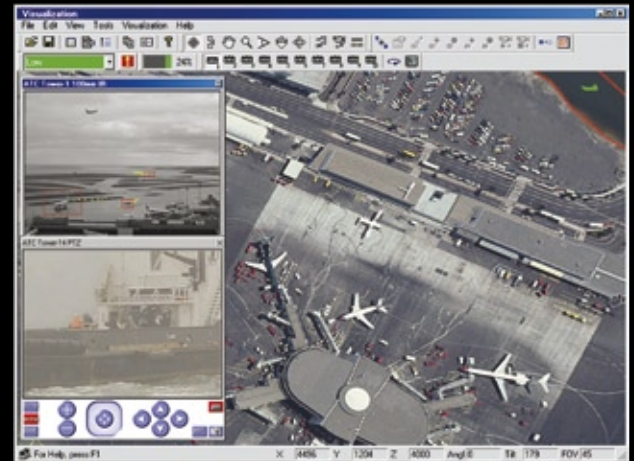
Security for Public Transportation

IP Camera Tests

Emergency Evacuation

GIT SECURITY Award 2012

COVER: Siemens – Security and Safety Solutions for Airports



GIT VERLAG

CAPTURE.



RECORD.



DISPLAY.



CAPTURE.



iPOLiS
Network Solutions from Samsung

Full High Definition
Image Capture

**FULL
HD**

Intelligent
Video Analytics



Scalable
Recording



Remote Viewing
and Control



A Samsung HD Network Security Solution captures up to 5 times the detail of standard resolution systems. HD image capture up to 1080p, recording and display combine to provide a security system which delivers an incredibly high level of picture detail.

HD cameras and displays deliver a wide aspect 16:9 view of a scene and allow operators to pin-point specific areas of interest for closer inspection, without losing definition or suffering from pixilation. And by using HD recording this can be achieved on recorded footage with the same clarity.

With a host of cameras, a choice of hardware or software recording options, plus HD displays, you can develop a security solution perfectly suited to your business.

Samsung HD Network Security Solutions. Smarter Security.

T 01932 455 308
E STEssecurity@samsung.com
W samsungsecurity.com

Samsung Techwin Europe Ltd
1000 Hillwood Drive, Chertsey, Surrey, KT16 0PS, UK

SAMSUNG

RFID-Technology for Innovative Access Control

Have a Good **Start!**

I guess the majority of our readers have just returned from their Christmas and New Year's holiday. GIT's Safety and Security team wishes you a good start and all the best for 2012!

2012 starts with two security shows that will attract the attention of thousands of security professionals: Intersec in Dubai and the Perimeter Protection show in Nuremberg/Germany. Perimeter Protection show was launched in 2010 and the show concentrates on electronic and mechanical products and systems for site protection and building security. The congress program and entrance tickets are available now via www.perimeter-protection.de/ticket. We have arranged that GIT SECURITY readers will have the opportunity to get a free entry if they follow this link and enter code KD5VXpEF.

If you plan to attend Intersec in Dubai, please have a look at the show preview in this issue and you are more than welcome to visit our stand there in hall 1 (1-736C). My colleague Steffen Ebert and I will attend the show in Dubai. The show is a success story since its start some years ago and current estimates indicate that the show will be considerably larger both in size and scope as compared to the record-breaking 2011 edition.

Back in 2011 a lot of our readers and leading security companies told us, that security for public transportation is very high on their agenda. In this issue we have focused on transportation security with several articles showing you solutions that might help you with your daily work. Another highlight is the presentation of the 2012 winners for GIT SECURITY AWARD starting on page 12. Congratulations to the winners and thank you to all our readers who did vote for one of the products.

Enjoy reading this issue!

Heiko Baumgartner

For GIT's Safety and Security team

proxMagic[®]

• High Flexibility

One reader for all proximity technologies.



bioProx[®]

• Double Security

Contactless access control and biometric verification.



tranSpeed

• High-Speed Access Control

Vehicle access and car park management for indoor and outdoor installation.



proxSafe[®]

• Perfect Control

Secure and electronically recorded management of keys and valuables.



deister 
electronic

deister electronic GmbH
Hermann-Bahlsen-Str. 11
D-30890 Barsinghausen
Tel: +49 (0) 51 05 - 51 61 11
www.deister.com

The RFID Company



18

COVER STORY

A Lot of Ongoing Security Innovation in This Market

Neville Miles, Head of Security Systems and Portfolio, Siemens.

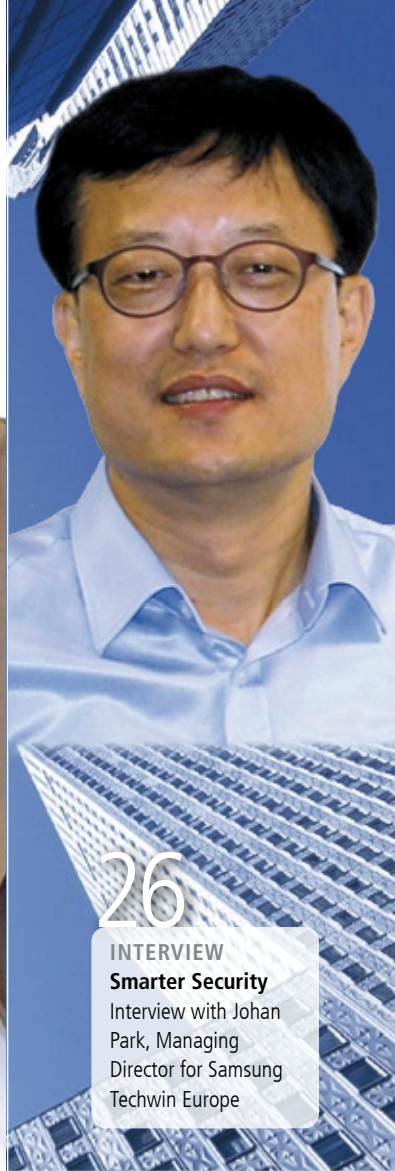


20

BRANCH FOCUS ENERGY

Energy for Security

Interview with Michael Schmidt, Head of Company Security, RWE



26

INTERVIEW

Smarter Security

Interview with Johan Park, Managing Director for Samsung Techwin Europe



30

EVENT

Intersec 2012: Focus on Commercial Security

The ME's Security Event in Dubai

EDITOR'S NOTE

Have a good start

Heiko Baumgartner

MANAGEMENT

GIT SECURITY AWARD 2012

Everyone's a Winner

COVER STORY

A Lot of Ongoing Security Innovation in This Market

Security and Safety Solutions for Airports from Siemens

BRANCH FOCUS ENERGY

Energy for Security

Interview with Michael Schmidt, Head of Company Security, RWE

VIDEO MANAGEMENT

Ready for the iWorld

Benefit from Innovations in Video Management Software SeeTec 5.4

INTERVIEW

Smarter Security

3

Interview with Johan Park, Managing Director for Samsung Techwin Europe

DISPLAYS

It's Not Hip to Be Square

New Display Design Releases Designers Creativity 28

12

BRANCH FOCUS ENERGY

Security for Energy and Utility Companies

Energy Summit: The EVU Forum at Bosch in Berlin 29

EVENT

Intersec 2012: Focus on Commercial Security

18

The Middle East's Premier Safety, Security and Policing Trade Event in Dubai 30

FIRE PROTECTION

SECURITY FOR PUBLIC TRANSPORTATION

Intelligence Creates Security

An Integrated Approach for Train Stations 34

24

INTERSEC DUBAI

Reliable Fire Safety Products

Siemens Is Launching „Cerberus Pro“ with ASAtechnology for the Middle East Region 38

SAFETY

EVACUATION

Properly Managing Risk

Personal Evacuation Plans and Evacuation Trainings Help to Save Lives 40

SECURITY

PERIMETER PROTECTION / CCTV

Refreshing Approach

Video and Audio Communication as Aids to Process Management at Gerolsteiner 42

PERIMETER PROTECTION

Alarming Integration

The Scurit View of the Challenges for 2012 44

CCTV

Turn the Night into Day

LED Illuminators Expand the Scope of Video Cameras at Low Lighting Conditions 45

ACCESS CONTROL

More Doors to Open

Enlarging an Access Control System with Wireless 46



45

CCTV
Turn the Night into Day
LED Illuminators
Expand the Scope of Video Cameras

46

ACCESS CONTROL
More Doors to Open
Enlarging an Access Control System with Wireless

58

ONLINE SURVEY
A Clear Vote for Video over IP Solutions
Key Results of our Online Survey



My Access to my Business.

LEGIC advant[®] 4000
Reader chip series
▪ Multi standard
▪ Low power
▪ Upgradable

Connections in All Directions

The Phased Introduction of New Security and Time Recording Systems **48**

SECURITY FOR PUBLIC TRANSPORTATION

Mind The Gap!
Providing End-To-End Security on Public Transportation Systems **50**

The Inconspicuous Companion

Comprehensive Mobile Video Surveillance System for Public Transport **54**

CCTV

A Perfect Fit for Schools
Accrington Academy Installs Video Surveillance Platform to Protect Students, Staff and School **56**

ONLINE SURVEY

A Clear Vote for Video over IP Solutions
Key Results of our Online Survey on Network Video Surveillance Systems **58**

CCTV

London College Embraces IP Video Surveillance
Integrated Solution Based on IndigoVision's Security Management System **59**

TEST THE BEST!

In Focus: Bosch NBN 832 **60**

In Focus: Samsung SNB-5000 **61**

In Focus: Basler BIP2 1920c dn **62**

SECTIONS

News 6

Fire Protection Products 39

Security Products..... 47

BUSINESSPARTNER..... 63

Company Index / Imprint. . . Inside Back Cover

Any service I can imagine, any security level I desire.

All on one chip. On the credential of my choice.

Contactless smart card technology: www.legic.com

LEGIC[®]
innovation in ID technology

Your Opinion Counts: Does Your Company Still Need You?

A new study suggests that it is no longer the case that scientists under the age of 40 make the majority of significant breakthroughs in chemistry, physics and medicine. Quite the contrary; discoveries are increasingly being made by 'Best-Agers'. The research carried out by Benjamin Jones and Bruce Weinberg certainly has implications for the Heads of Personnel, also in security companies, who are looking to fill vacancies in their research departments. A study of Nobel Laureates from 1901 to 2008 in these three fields examined the age at which scientists did their prize-winning work.

Results showed that before 1905, about two-thirds of winners in all three fields did their prize-winning work before age 40, and about 20 percent did it before age 30. But by 2000, great achievements in physics by age 40 only occurred in 19 percent of cases, and in chemistry it nearly never occurred. „The image of the brilliant young scientist who makes critical breakthroughs in science is increasingly outdated” said Bruce A. Weinberg, co-author of the study and professor of economics at Ohio State University. „Today, the average age at which physicists do their Nobel Prize winning work is 48.”

Whether spearheading security companies that constantly push the boundaries of physics could benefit from a review of employment policy will be an interesting discussion topic, and GIT SECURITY would like to hear your opinion on the subject, in particular about the inventive people in your company that bring new ideas and techniques – and ultimately products – to fruition. Read more on this study in the original publication “Age dynamics in scientific creativity” and let us know how it affects yourself and your company. Further detail can be found here:



Rich Bravman Appointed Pivot3 CEO

Rich Bravman is Pivot3’s new chief executive officer. Bravman is responsible for leading and driving the company’s next phase of expansion and growth in both new and existing markets. He assumes the role from Robert Fernander, who has served as the company’s president and CEO since 2007 and will continue in a key role spearheading business development and major account penetration for the Company. “Rich is a proven leader with an impressive track record in taking start-ups to global publicly-traded technology leaders. Having grown through the ranks from software engineer to CEO, and having been associated with technologies that are a mix of both hardware and software makes Rich a perfect fit for Pivot3,” said Ron Nash, Chairman of the Board. Bravman brings with him more than 30 years of executive management and board level experience at technology companies ranging from start-ups to global S&P 500 companies. Most recently, Bravman served as vice president of corporate development and chief marketing officer at NCR. www.pivot3.com

Smart Card Reader Platform from HID and Sony

HID Global and Sony Corporation announced a jointly developed contactless smart card reader platform that embeds secure access control capabilities and Near Field Communication (NFC) functionality into laptops and other mobile devices. The platform holds a secure element that stores cryptographic keys which secure the authenticity and integrity of user credentials. It supports widely used contactless technologies for applications ranging from physical access control and identity assurance at the desktop to transit-fare, point-of-sale collection and loyalty programs. The jointly developed NFC global reader platform is the result of a strategic partnership that both Companies announced last year. www.hidglobal.com

C-Tec Software for Adobe Headquarters



Adobe has opted for C-Tec’s Sigtel disabled refuge system at its new UK Headquarters in Maidenhead, Surrey. With its controllers and extensive arrangement of fire telephone and disabled refuge outstations, the system is central to protecting the state-of-the-art UK offices of one of the world’s most successful software and technology-based companies. However, according to David King, Installation Manager at Niscayah Group, the company that completed the project at Market House, the installation was far from straightforward as the building already had a Sigtel disabled refuge system installed on one floor which needed to be connected to new equipment so to create one large system for the entire four-storey building: „The challenge was to interface an additional Master Controller and various outstations to the equipment already in operation. To achieve this we temporarily suspended the system and used C-Tec’s EVC423 software to completely reprogram it once the new Controller and outstations had been installed.” alex.makinson@c-tec.co.uk

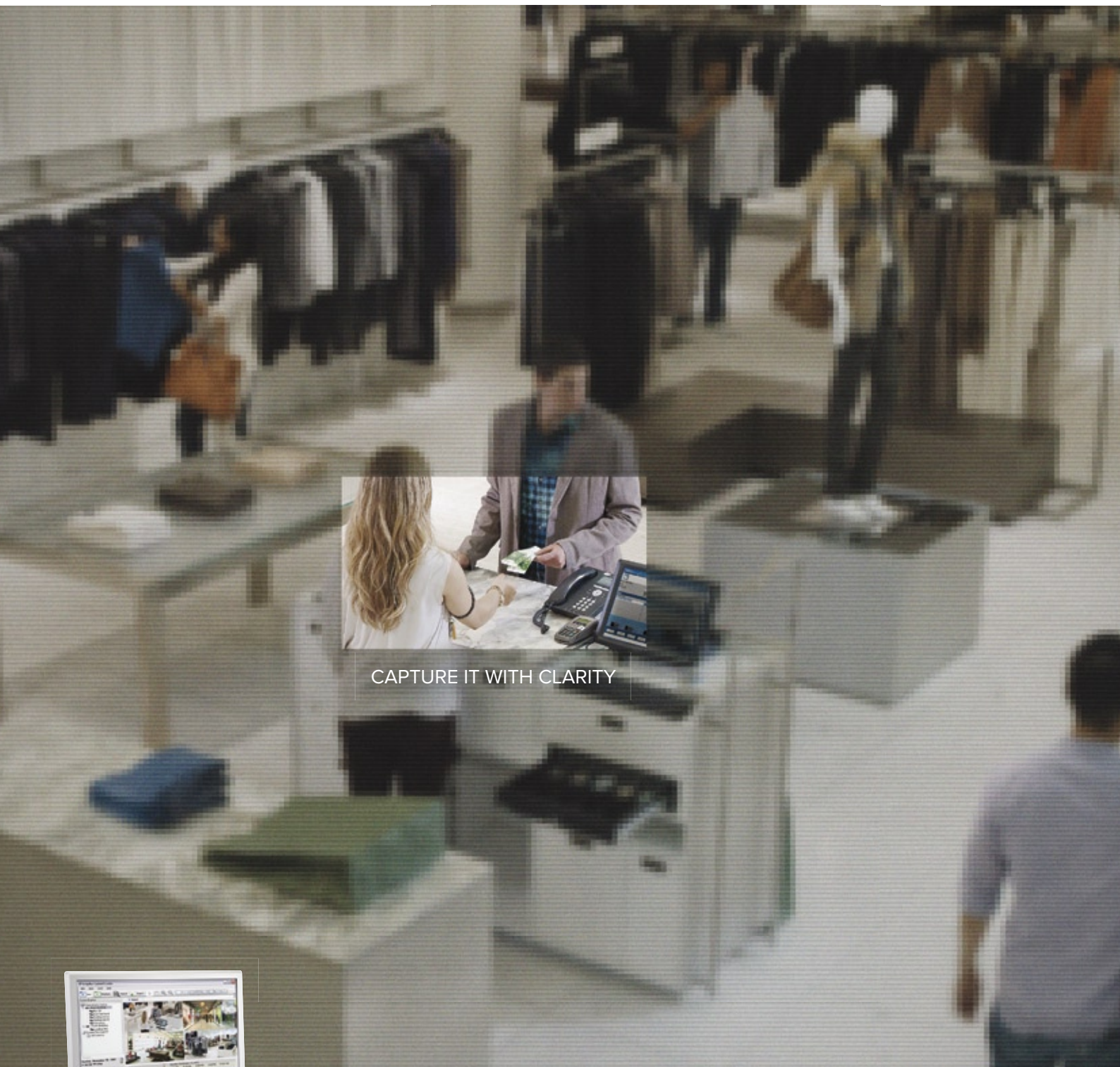
Pivot3: James Hajek Named CFO

James Hajek has been named Pivot3’s chief financial officer. Hajek will be a core member of the Company’s leadership team, responsible for all finance and operations functions, as it expands its business in both emerging and established markets. „James’ skills in driving operational excellence aligned with strategic business objectives, proven in both emerging and global S&P 100 technology companies, give us confidence that he will contribute importantly toward achievement of our company’s ambitious goals,” said CEO Rich Bravman. “James will play a critical role on our executive team, building the infrastructure and team required to prepare Pivot3 for our next stage of growth.” Prior to Pivot3, Hajek served as chief financial officer of GE Asset Intelligence. www.pivot3.com



Network Video Surveillance Sales on the Right Track

The transition from analogue video surveillance equipment to network video surveillance equipment is forecast to drive growth of over 7 % for the mobile video surveillance equipment market in trains and trams, over the next five years – says IMS Research’s latest report on the mobile video surveillance equipment market. One of the key factors driving the transition from analogue to network video surveillance in the trains and trams market is the increased availability of hybrid DVRs. Historically, hybrid DVRs have had little impact in the mobile video surveillance equipment market as the large analogue camera installed base limited the need for hybrid technology. However, a number of the larger manufacturers have released hybrid mobile DVRs in 2009 and 2010, facilitating the introduction of network cameras into the much larger trains and trams retrofit market. According to report author, Oliver Philippou, “the train industry is predicted to adopt network video surveillance equipment at a much quicker rate than other transport markets covered in the report, such as police cars and transit buses. In fact, the network camera market in trains and trams is forecast to grow at over 20% over the next 5 years.” enquiries@imsresearch.com



CAPTURE IT WITH CLARITY



Get unprecedented image detail and never miss a thing with Avigilon's end-to-end surveillance solutions.

From shoplifters to potential false liability claims, you can now capture it all in high-definition. The Avigilon Control Center software featuring High-Definition Stream Management (HDSM) technology combined with the broadest range of megapixel cameras (from 1 - 29 MP) provides superior details while requiring minimal bandwidth and storage. Our software allows you to search and view an incident in seconds, along with the ability to link HD surveillance footage with transaction data to help reduce shrinkage and theft. With Avigilon on your side, you will always get the best evidence.

Surveon: New UK Office

Surveon has expanded its global operations with a new branch office in the United Kingdom (UK), aiming to better serve partners and customers in the European security market. The new UK office, located in Basingstoke, focuses on sales, logistics and technical support services. Sara Chen, Sales Manager of Surveon Europe, noted „Europe is one of the key regions in the global security market. With our customer base in the region growing quickly, our operations have to further evolve so that our service levels can keep pace with business growth. With office space of 17,157 square feet, including a training conference room and large warehouse, our new office in the UK features a full range of business expertise and enables us to quickly ship products to customers throughout the region.“ sales.europe@surveon.com

Quadrant Puts Council in Control

Quadrant Security Group has helped unitary authority Cheshire West & Chester streamline security operations by upgrading and integrating CCTV provision in three town center locations, and consolidating control to one main management base in Chester. Prior to 2009, Ellesmere Port & Neston, Northwich and Chester (approximately 326,000 individuals) fell under three separate authorities. When structural changes to the local government system were introduced, the three boroughs were replaced by one unitary authority – Cheshire West & Chester. The merger presented a need and opportunity to upgrade CCTV provision in the three town/city centers, integrate the systems and maximize efficiencies by converging the three separate control rooms into one. Chester was chosen as the base for the new converged CCTV control center. Key considerations were enabling the control center to fully integrate with historical analogue and more modern digital systems, making use of Private/Leased fiber optics and existing ICT networks, providing secure access and sharing capabilities, as well as facilitating the audit trails necessary for such a system. www.qsg.co.uk



Basler Introduces New Website

Basler’s Internet presence has been fundamentally revised and modernized. A new logo and new corporate design were also introduced. In the course of a strategic reorientation over the past two years, the Company has increasingly focused on its camera business. The new look of the home page stands out through its modern graphics, more comprehensive information service, and easier access to content. For instance, navigation was expanded so that access is not only possible via the standard product catalog but also through the applications of the cameras. www.baslerweb.com



Nedap: Partnership with iReader in China

Nedap Security Management and Beijing East iReader Intelligent Technology have entered into a business partnership for the northern Chinese market. iReader will include Nedap’s security management system Aeos in its product portfolio. IReader has extensive experience and expertise in security, safety and access control in the Chinese market. Reason for enhancing its portfolio with the system is the increasingly growing security demands which require flexibility, scalability of security systems. Through Aeos, iReader has a high value contribution to its product range and a truly global enterprise solution which will strengthen iReader in providing a perfect fit solution to their clientele. tamara.simons@nedap.com

Siemens: Alistair Enser Appointed Global Sales Director

Alistair Enser has been appointed as Global Director of Sales for Security Products from Siemens, a key business segment within the Siemens Building Technologies Division. This appointment is the latest step in the implementation of the global growth strategy for Security Products. Alistair Enser takes up his new position after working with the Company for more than six years, most recently as Global Director of Products and Technology and before that as UK Country Head. In these positions, he has made major contributions to the current success of the Security Products business. His previous roles, which encompassed many countries and areas of operation, included Sales & Marketing Director of Bewator, which is now a Siemens business. lea.baumann@siemens.com



Nedap Wins Task Force Euro 2012 Topscorer Award

Nedap Security Management won the Task Force Euro 2012 Topscorer Award. The ceremony was held at the Heineken Experience in Amsterdam. Jos van Nederpelt, Business Development Manager at Nedap Security Management, received the award from the Polish State Secretary of Foreign Affairs, Mrs. Beata Stelmach. The Company had made significant contribution for the European Football Championship, which will be held in Poland and Ukraine this year. After successfully securing the Olympic stadium in Kiev, the Company has secured the ultra-modern Euro 2012 stadium in Lviv with the advanced security management system Aeos. In addition to these stadiums in Ukraine, the manufacturer has recently acquired the contract for Poznan Airport. Poznan is host city for the European Football Championship in 2012. The airport is being expanded with a new terminal and with cooperation from the Polish partner Atrem SA, Nedap will facilitate access control and intrusion detection for both the new and the existing terminal. tamara.simons@nedap.com

IQinVision Expands European Sales and Management Teams

Andrew Patterson has been promoted to IQinvision’s Director of International Sales. He has responsibility for sales in Europe, the Middle East, Africa, Pakistan, and India. Andrew Patterson has fifteen years of industry sales management experience. Prior to joining the Company in early 2010, he worked as a business unit and training director in the electronic security industry. Natalia Hoffmann joins the European team as Regional Sales Manager, Eastern Europe. She has more than six years experience in the IT Industry, most recently in IP Video with Seetec. To strengthen sales operations in the South Central US Region, Dollacker & Associates has been added as an additional Sales Rep firm. This firm was formed in 1983 by Michael and Ellen Dollacker to offer professional services to the security and audio/video markets in the states of Texas, Oklahoma, Arkansas and, Louisiana. www.iqeye.com



BSIA: Access Control Guide for Utilities Sector

The British Security Industry Association (BSIA) has launched a free guide to assist the utilities sector in the use of access control systems. The guide explains how access control systems can improve the protection of sites such as water, oil and nuclear plants as well as administrative or production offices within the sector. It also provides case studies to exemplify the work of members with utilities companies, and brings attention to any legislation that should be considered when employing the technology. Mike Sussman, Chairman of the Association's Access Control Section, said: "Changes in the social and political environment, as well as the growing scope and impact of the utilities sector in almost everything we do have increased its vulnerability to threats such as terrorism and vandalism. Moreover, natural disasters and internal breaches are also cause for concern for companies operating within the sector. For this reason, regulating and monitoring access to premises and sites becomes of critical importance."

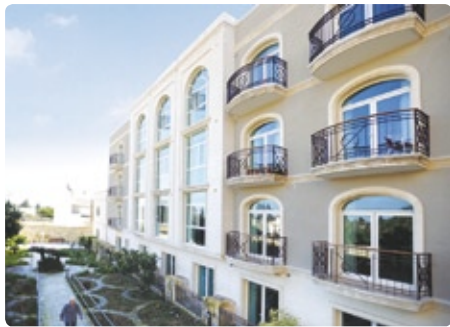
www.bsia.co.uk/publications



Kentec at the Heart of Care in Malta

A prestigious new five million euro residential care home in Attard, Malta, has installed Kentec fire control panels as part of the new fire safety system. Roseville is a rare example of a period Art Nouveau Mediterranean villa, now sympathetically extended to accommodate up to 130 residents, offering 24-hour professional care. Project designers and commissioners Firetech specified a Kentec 6-loop Syncro analogue addressable fire control panel at its heart, supported by Hochiki open protocol fire data communications. The system is integrated to over 350 Hochiki devices including Automatic Smoke Detectors, Heat Sensors, addressable Call Points, Sounder-Beacons, and mains Interface I/O Modules.

www.kentec.co.uk



Torsten Anstaedt Reinforces Mobotix

Mobotix announces a significant personnel acquisition to the start of the new fiscal year 2011/2012 with Torsten Anstädt. He is an expert for intelligent video analysis, will be responsible for the development of "Strategic Product Marketing" starting November 15, 2011. His responsibilities include Product Management, Marketing as well as Communication within Sales, Support and Development. Anstädt comes from Axxonsoft, the European market leader for open IP video management platforms. In his position as Managing Director from 2009 to 2011, he was responsible for the company's activities in the EMEA region. Previously, he was Managing Director EMEA and co-founder of Aimetis. "With Torsten Anstädt and his many years of experience, we increase our expertise tremendously," says Dr. Magnus Ekerot, CSO of Mobotix. "This brings us forward into the new target markets, such as Building Automation."

www.mobotix.com



THE ALL NIGHT PARTY ANIMAL!



GEKO LED ILLUMINATORS FOR SECURITY

The Best Light Technology from Videotec. Infrared or white light for a Hi-performance, long life, energy cost saving and zero maintenance lighting, in any environment and condition.

Primion At Frankfurt Airport



Fraport has replaced the Credential Management System in use at Frankfurt Airport by a system from Primion Technology. Fraport had awarded the contract to the Company to supply a new integrated network system consisting of Credential Management, Access Control, Time Recording and Gate Access at the end of 2008. The first phase of the project was to create a comprehensive concept for the development and migration of the existing, highly complex Credential Management system in partnership with the members of the Fraport Project Team. Particular attention had to be given to the multiplicity of interfaces that the Credential Management System has to serve. This also included interfaces to the existing Access Control system, which has to continue to be supplied with credential data until its replacement by the prime Websystems software from Primion. From the start, the new system administers some 154,000 permanent credentials, 268,000 persons as well as 16,500 external company and organization units, together with their historical data. Within just the first two days, 3,500 Visitor badges were created and issued. The primary goal was to bring the IT systems up to the latest standards in terms of security. As well as requiring a renewal of the central management systems, this also called for the replacement of all the door and gate access control readers as well as the time recording terminals, across the complete airport site. Currently, new hybrid airport ID badges for some 80,000 persons are being created by Fraport and exchanged for the existing magnetic stripe cards. Once all the card readers have been upgraded to units with the new, high-security RFID technology, the previously used hybrid-cards with magnetic stripes will be replaced by the more economical, purely RFID cards. The successful introduction of the central Credential Management software provides the basis for the next phase of this major project: the introduction of Time Recording, Access Control and the Gate Access System. A further milestone should be reached in the near future, when the new Time Recording system is taken into service. At the same time, new Time Recording terminals employing the same proximity reading technology will be installed. Shortly after that, the new Access Control system should also be rolled out. Swapping out the technology in around 900 switching cabinets and over 700 different rooms will be a complex task for all involved. As the final stage of the current project, the previous Multi-Access Control System (MACS), which controls the processes at the gates, is to be replaced by a new, modern Gate Access System (GAS), during a further roll-out phase. This represents a major challenge, both in terms of taking over the complex body of rules and regulations that handles gate control and in the replacement of all the terminal devices at the gates. Over 600 Gate Management Terminals (GMT) has to be replaced in the most security-critical areas, while the system continues to operate.



info@primion.de

ILS Contract for Morpho Detection

Morpho Detection has received an Integrated Logistics Service (ILS) contract from the Transportation Security Administration (TSA) for maintenance of its explosives detection systems (EDS). Under the contract, Morpho Detection will deliver cost improvements on legacy EDS systems while increasing operational performance and reliability. It was awarded for a base year and three option years. Minimum value is \$71 million with a not-to-exceed amount of \$466 million. The sole source contract covers acquisition of Performance Based Logistics (PBL) services including preventative, corrective, and expected maintenance actions to sustain deployed EDS and other ancillary equipment. The contract includes these services on the entire existing operating fleet of government owned MDI EDS units. www.morphodetection.com

Finnish City Uses March Networks IP Video Software Solution

March Networks announced that the City of Raisio in southwestern Finland is deploying the Company's Video Management System (VMS) solution to protect city property, accelerate incident response, and ensure the safety and security of residents. Security and IT staff selected the solution – which includes the VMS software, the Company's High-Definition IP cameras and Edge Encoders – because of its strong centralized management capability, high-quality video, and the ability to store archived video in a virtualized environment. Reijo Vasama, Supervisor of Building Technology, City of Raisio: "In the past, if a crime or other incident occurred on city property, we had to dispatch staff to the site to retrieve the video. Now we can access live or recorded video remotely from our central operations center, which means we can verify what's happening at any networked location immediately and search through recorded video in minutes, rather than hours or days." mmeroni@marchnetworks.com

Tyco Completes Acquisition of Visonic

Tyco International has completed the acquisition of Visonic, a developer and manufacturer of electronic security systems and components, for approximately \$100 million in cash. The acquisition was first announced on September 15, 2011. Visonic's portfolio includes wireless communications technologies that offer increased range and secure communications. These technologies are in use in more than 1 million wireless installations around the world. "The addition of Visonic to the Tyco Security Products portfolio advances our strategy to provide our global customer base with broad-based, best in class security solutions," said Mark Vandover, President of Tyco Security Products. "The company's technological capabilities and strong presence in markets such as Europe enable us to further enhance the solutions and reach of our intrusion security portfolio." www.tyco.com

Onvif 2011 Annual Meeting

Onvif, the standardization initiative for IP-based physical security products, has held its annual meeting in Shenzhen, China in November. Hosted at the Ritz Carlton Hotel in Shenzhen, the meeting was organized in conjunction with the CPSE 2011 trade show, where the initiative also held two networking events to provide an update to the industry on Onvif's work in furthering IP interoperability standards. Officials gave presentations on several key initiatives for 2012, including the introduction of profiles, which simplifies the selection of interoperable versions of the specification for end users and systems integrators. Annual meeting attendees heard an update on the initiative's technical roadmap, which includes the pending release of Version 2.2 of the ONVIF specification in early 2012. The meeting's keynote speaker was from the TC100 committee of the Standardization Administration of China, which develops and administrates the national technical standard for the Chinese security industry. www.onvif.org

ZBVs from American Science and Engineering

American Science and Engineering announced the receipt of an order for four Z Backscatter Vans (ZBV) from an African country for law enforcement applications. This customer currently already has two of these non-intrusive mobile inspection systems in operation. "Since their original deployment less than two months ago, the systems have proven their detection capability to our law enforcement customer," said Anthony Fabiano, President and CEO. "With these additional systems, security officials in this African nation will have six very powerful and effective tools to inspect cargo and vehicles for explosive threats and contraband. We will work closely with our customer to provide and maintain their growing fleet of ZBV systems." www.as-e.com

FFT Wins Multi Million Dollar Airport Security Contract

Future Fibre Technologies (FFT) has been awarded a multi-million dollar contract to supply its world leading fiber optic perimeter intrusion detection systems for a major new civilian airport in the Middle East. Working with one of the Company's Global System Integration partners, this project is comprised of multiple perimeters totaling almost 50km. The selected perimeter intrusion detection system was required to seamlessly integrate into existing third party security systems, and had to operate in an environmentally demanding high security environment. An all fiber optic solution was selected as the most appropriate to protect this prestigious and critical national transport infrastructure. info@fftsecurity.com

Salto: Partnership With Biocote

Salto Systems announced a partnership with Biocote. The agreement will see a range of Salto access control products, initially its best selling XS4 escutcheon range including wireless on-line real time escutcheons, wireless ready escutcheons, stand alone escutcheons, Amok escutcheons, SKG escutcheons and more, having the option of being treated with the Biocote finish. This is an antimicrobial agent containing silver which is engineered to provide continuous, built-in protection on a products surface. It works by binding with microbes and damaging their cells in a number of ways, disrupting their normal functions and preventing them from reproducing. It has been proven to effectively reduce the presence of microbes on surfaces by up to 99.9%. The activity of the agent helps to eliminate the growth of bacteria and moulds on coated escutcheons, lessening the impact these microbes have on the product. www.saltosystems.com

Tyco Security: Warren Brown VP of Product Management

Tyco Security Products has appointed Warren Brown as Vice President of Product Management. For the past three years, he has served as the Director of Product Management for Enterprise Commercial Solutions, including the Software House, and American Dynamics brands. In this role, he guided American Dynamics' strong entry into the IP Video market with the launches of the Illustra line of IP Cameras and the victor VMS and Videoedge NVR platforms. Within Software House, he led the global expansion of the C-Cure 9000 and iStar product lines. In his new role, Warren Brown is charged with driving the overall direction and strategy for new product introductions for all of Tyco Security Products' brands. www.tycosecurityproducts.com

Bosch Security Systems extends its video portfolio with Advantage Line – an all new affordable product range. Finally, everyone can afford the best! The Advantage Line portfolio of professional CCTV solutions is now available. Delivering reliable, long-lasting performance at a competitive price, these products combine great image quality with the lowest maintenance needs. They are also easy to install and operate, ensuring fast, simple set-up to save you time, effort and costs. Advantage Line products by Bosch are perfect for a broad range of applications such as small businesses, retail and schools. So don't delay, visit your local distributor today! www.boschsecurity.com



BOSCH
Invented for life

GIT SECURITY AWARD 2012

Everyone's a Winner

GIT
SECURITY
AWARD
2012
WINNER

GIT VERLAG

"Everyone's a Winner, baby, that's the truth", maybe you remember the Hot Chocolate song from the 80's. First of all: At this year's GIT SECURITY AWARD all the companies whose products were nominated did win. We introduced their products to a wide audience, the readerships of GIT SECURITY and GIT SICHERHEIT as well as to the users of our online platforms PRO-4-PRO.com, GIT-SECURITY.com and GIT-SICHERHEIT.de. Many of our readers took the opportunity to vote for the best products in the five categories. Thanks to all participants and congratulation to Michael Steup from Ford Motor Company who did win our reader price, a brandnew Pentax camera.



For several weeks we were presenting the ten nominated products for the five categories in our magazines and online on www.PRO-4-PRO.com to an international audience. The participation was better than ever and we received hundreds of votes via e-mail and fax and even more votes via our voting tool on www.pro-4-pro.com/security. Again for this year the race was very tight and a lot of products had good chances to win.

We are looking forward to you joining us again next year for the GIT SECURITY AWARD 2013 and now it is time to have a closer view on the 2012 winners in each category.

Keep the overview

The 360° panomorph lens
YF360A-2/SA2 from Fujinon



One lens to see everything around you – the new 360° panomorph lens from Fujinon enables you to keep a complete overview and eliminates blind spots. The ellipse image uses the most light sensitive sensor area and offers you in combination with any ImmerVision Enables® Software Solution a closer look without any distortion. Live as well as in recorded mode. The new YF360A-2/SA2 can be used with nearly every 1/3" CS-mount camera with a resolution from VGA to 2 Megapixel. Fujinon. To see more is to know more.

Category A

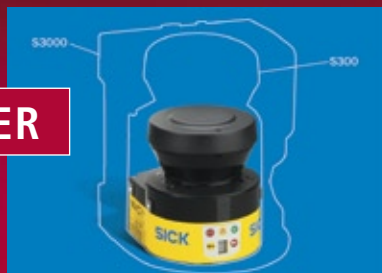
Safe Automation

SICK: Mini S300 Safety Laser Scanner

Maximum Safety in Mini Format

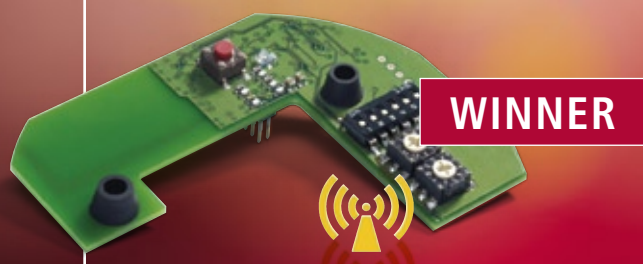
The new SICK S300 Mini safety laser scanner is the world's most compact safety laser scanner of his kind and enables an installation at minimum space requirement. It offers 16 triple field sets with one protective and two warning fields each. Additionally, it is possible to connect up to four safety scanners to the Flexi Soft Safety Controller. This makes the S300 mini able to handle the various demands and environments found in many applications. Thereby, the S300 Mini series achieves safety rating SIL2 in accordance with EN 62061 and realizes a Performance Level D per EN ISO 13849-1.

WINNER



Category B

Fire Protection



Hekatron: Genius Hx Radio Module Pro

Radio Linking for Best Connection

The Genius Hx Radio Module Pro provides numerous unique features to the smoke alarm market. The removal detection feature indicates any unauthorized removal or damaging of a Radio Modul Pro equipped Genius Hx Radio Smoke Alarm. Radio link monitoring is an additional novelty performing day-to-day presence tests of all Radio Modules being interlinked. The fast alarm transmission increases safety with the Radio Module Pro transmitting alarms considerably faster than other products of similar kind.

Category C

CCTV

Dallmeier electronic: Panomera

Multi-sensor System With up to 51 Megapixel in Real-time

Panomera is a camera technology, with which huge widths, as well as areas with large distances can be displayed with a completely new resolution quality. A huge area can be surveyed from a single location, which significantly reduces infrastructure requirements: Projects which previously would have required multiple HD cameras can now be realised with a single Panomera system. All areas of the entire surveillance scene are displayed simultaneously with maximum detail resolution.

WINNER



2nd PLACE

Euchner : Guard Looking CEM BI

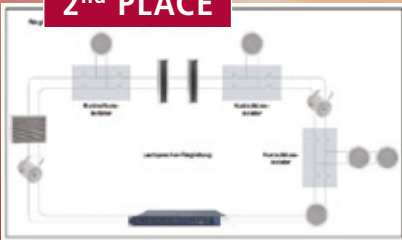
Transponder-coded Guard Looking with a Minimum of Power Consumption

The CEM BI is a transponder-coded guard looking with bistable solenoid which operates on the closed-circuit current principle. These attitude allows the CEM BI to keep up the guard looking function with a minimum of power consumption. Only for changing the state of the solenoid "real" power is needed.

Novar/Esser: LSN Loop Technology for Voice Alarm Systems

Increased System Reliability and Reduced Wiring Costs

As a rule, 100 V loudspeakers are still connected to voice alarm systems using spur line technology. This involves a high risk of system failure. Systems that comply with DIN VDE 0833-4 can be equipped with A/B wiring to minimize the risks caused by wire breakage and short-circuits. The main advantages of LSN ring technology include 100% operational reliability, simple replacement of the A/B wiring, E30 wiring rendered partially superfluous and use of second loud-speaker in smaller room rendered superfluous.

2nd PLACE**2nd PLACE**

Samsung: SNO-5080R Network Camera

High Definition All-in-one External Camera Solution

The SNO-5080R, which has the ability to capture superb 1.3 (1,280 x 1,280) megapixel images and complies to the HD standard, can be deployed in virtually any external situation and can be installed 'out-of-the box' as it incorporates all the component parts of an IP66 rated weatherproof day/night camera, including a varifocal lens, sun shield and bracket. This not only offers installers cost savings over purchasing individual parts, but also pre-build and installation time and costs.

3rd PLACE

IBF: Safexpert 8.0

New Generation of the CE Marking Software Safexpert

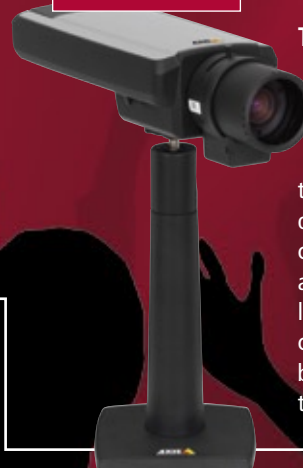
Fifteen years of experience were integrated into the new development of the approved CE-marking software Safexpert. The new generation 8.0 will essentially facilitate the safety related project management including risk assessment and CE-marking.

3rd PLACE

Apollo Fire Detectors

Xpander – Detection System Wireless Fire Detection System

The Xpander system is comprised of individual detectors, call points and alarm devices which communicate with the Apollo addressable loop by radio signals. Each Xpander device is assigned an address. The complete Xpander range is the first to be granted the wireless fire standard, EN54 Part 25, which is a key standard for European compliant radio products. The solution eliminates cabling difficulties, minimises disruption, and enables rapid retrofit.

3rd PLACE

Axis: Q1602-E Network Camera

The Market's Most Light Sensitive Camera

Axis Q1602-E is suited in dark or low-light conditions where users require color information in the video to enhance recognition and identification of objects. The new Lightfinder technology on which the camera is based, will be especially beneficial in demanding video surveillance applications, such as construction sites, parking lots, perimeter and city surveillance. In contrast to conventional day/night cameras which switch to black & white in darkness, Axis Q1602 can maintain colors even in scenes with very poor light.

Category D

Access Control, Intruder Alarm, Perimeter Protection

SICK AG: LMC123 Laser Scanner

Laser Measurement Technology (LMC) – the Intelligent Path to Security

The LMC123 is the world's only laser scanner with VdS certification according to Photo-electric Switch Directive Class C with Environmental Classes II and IVa. It monitors ten variably configurable fields simultaneously with maximum accuracy. The position of any field infringement is reliably determined thanks to the precise teach-in of field limits. High availability and an extremely low false alarm rate are guaranteed. The laser scanner is easily integrated in existing alarm systems as a result of its relay or OPC interfaces.

WINNER



Category E

Industrial Safety

WINNER



Draeger Safety: Alarm Amplifier Draeger X-zone 5000

Innovative Area Monitoring

The Draeger X-zone 5000 alarm amplifier can be used with the personal gas detection instruments Draeger X-am 5000 / 5600 for the measurement of 1 to 6 gases. With this combination it extends the application to area monitoring. Placed in areas where gas hazard is expected, up to 25 Draeger X-zone 5000 can be automatically interconnected to form a wireless fence line. Due to the very good perceivable alarms, the respective area can be evacuated immediately in case of emergency. It is possible to switch on and switch off external devices using the alarm contact.

2nd PLACE

Bosch: Blue Line Detectors

Motion Detectors for Better Performance and Easier Installation

The Blue Line Motion Detectors are offering improved catch performance, enhanced false alarm immunity and easier installation. They are suitable for residential and other commercial small applications, are very easy to install and deliver an expanded 12x12 meter wall-to-wall, gap free coverage area. The detectors can be positioned from 2.3 to 2.7 meters without adjustment, assuring no coverage gaps up to twelve meters away from the detector.

Honeywell Security: Day Alarm-Plus

Doorguard: Monitoring of Emergency Exit Doors

Honeywell Security's new concept "Day alarm-Plus" offers increased flexibility. Remote Alarm Unit, the alarm unit of the Day alarm-Plus can be installed separately, for example, directly above the door. You can see at one sight which door was opened. Simple operation: The unit can be controlled mechanical with DIN profile half cylinder or a contactless card reader. Assignment of different access rights with the card reader use: enabling, targeted individual access rights.

3rd PLACE2nd PLACE

Zweibrüder: Head Lamp LED LENSER H 14

Rechargeable LED Head Lamp

H14R is a rechargeable LED head lamp with outstanding luminance. It is continuously focusable and swivelling. Thanks to the intelligent fastening system, the lamp head can be detached from the headband and attached your belt. The lamp's microcontroller-operated Smart Light Technology offers several programmes with different light modes.

3rd PLACE

Elten: Safety Footwear Models Trainers

Sporty Look, Comfortable – and Safe

The safety footwear models from the Trainers series have a sporty look, which means they are comfortable – you can hardly tell the difference from the latest leisure footwear. This is due to the dynamic Trainers-outsole, which stands out particularly for its light construction. This doesn't imply that safety gets a short shrift; footwear based on the Trainers concept is non-slip, free of metal, and provides balanced heel stability and tread resistance.

COVER STORY

"A Lot of Ongoing Security Innovation in This Market"

Security and Safety Solutions for Airports from Siemens

More and more security companies are claiming to be active in the critical infrastructure market, with one of the hottest topics being airports. GIT SECURITY talked to Neville Miles, Head of Security Systems and Portfolio, Siemens Building Technologies, about this market.

GIT SECURITY: How does Siemens view the attractiveness of this space?

N. Miles: Airports obviously underwent a huge security technology upgrade and retrofit over the last decade as a result of 9/11. Airports now have a multitude of systems in place that can detect lots of possible events. However, all this additional information does not mean the situation will be either avoided or responded to in the most efficient or structured way. In fact, all these systems can create more confusion than support during an incident. With this in mind, we see airports as a very attractive market because of our ability to provide a complete lifecycle solution to the customer, including systems capable of providing sensor fusion, intelligent situational awareness and decision support.

What do you see as the main threats and concerns facing airports today?

N. Miles: An airport operator's greatest fear is disruption of their services due to an event and, as a result, loss of revenue and reputation. The

source of the event, whether it be a person identified in an area where they should not be, a safety event, or external events such as weather causing an airport closure, always leads to the same outcome: disruption of normal operations. In terms of specific security threats, a security breach by an individual can lead to a reset of the secure side of the airport, which is a major disruption of operations. This is more likely to occur from accidental breaches of security procedures by airport employees than from a specific targeted attack.

What are the major influences on airports going forward?

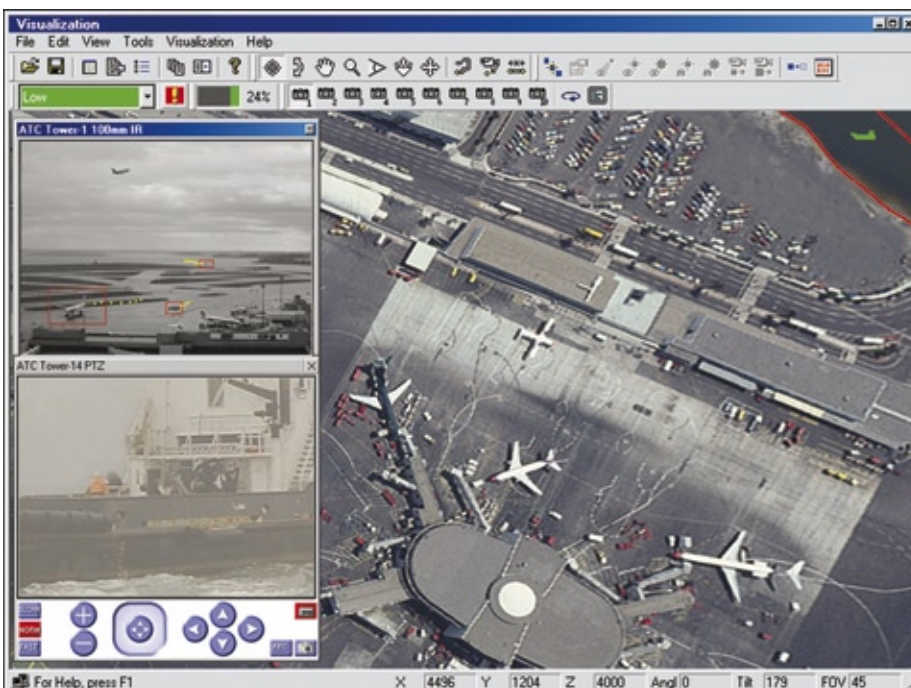
N. Miles: Airports have to ensure that they meet the regulatory and performance guidelines handed down to them by government authorities, and they have to generate revenue and thus return for their shareholders. They are primarily looking to increase revenue through new business models. If you can influence the return on investment of airports in a positive way, inside their operational parameters, you are likely to be successful.

How does Siemens address this?

N. Miles: We have many solutions to help airports improve their return on investment, including efficient and green buildings, baggage handling, transportation and parking solutions. Two solutions in particular stand out in the area of safety and security: Our command and control solutions such as Siveillance Vantage, which brings major operational efficiencies by combining all the relevant safety and security information and procedures of an airport. Secondly Siamos, a modular software solution that optimizes operational efficiencies and processes across all aspects of an airport.

Is there an innovation that stands out in the airport security market?

N. Miles: There is a lot of ongoing security innovation in this market. The most significant



Siveillance Site IQ Wide Area monitors and controls an airport from one screen. The software platform detects, tracks, and classifies objects while alerting emergency services.

Case Study: CCTV at Bodø Airport

An intelligent CCTV system with wide-area surveillance provides top security for passengers and ground staff at Bodø Airport in Norway.

The airport of Bodø, a town in the Norwegian province of Nordland, serves approximately 1.6 million passengers annually and is used by the Norwegian air force for winter training flights. Siemens Building Technologies delivered an intelligent CCTV system in order to monitor the indoor and outdoor areas of the airport, operated by Avinor AS Norway. Avinor wanted a cost-effective video solution which could effectively monitor important areas of the airport building: baggage handling, security check and the Critical parts of the Security Restricted Area (CSRA). In addition, the security of parked aircraft was to be guaranteed and the daily workflow at the airport was to be improved.

After Siemens' CCTV system had been implemented, the airport staff was given personal training to familiarize them with the functions and operational possibilities of the entire CCTV system, which made it possible to extensively optimize processes. Bodø Airport now has a CCTV system precisely adapted to its requirements: high security areas can be reliably monitored, all camera images are recorded and, in the case of an alarm, quick responses are possible. Monitoring of the outdoor areas is especially user friendly with only one TFT display. Statistical information about the waiting area in front of the security check also allows airport staff to be more precisely employed – exactly what the airport operator Avinor had envisaged.



innovations center on more integrated and efficient airports. New scanning technologies, especially those that improve throughput while maintaining scanning accuracy, stand out. I would consider airport optimization software that enhances the overall efficiency to be the biggest innovation because it is aligned with the customers' needs and desires. This is why Siemens is focused on these areas with software platforms such as Siveillance Vantage, Siamos and Siveillance Site IQ Wide Area.

What activities is Siemens specifically working on in the area of airport security?

N. Miles: Siemens has a number of initiatives around airport security and more efficient air-

ports in general. Siveillance Vantage is being used by the Airports of the Future initiative driven by Queensland University of Technology. This initiative is building models for all ground-based operations of an airport. Additionally, our work in open standards groups such as ONVIF to produce interoperability standards between security devices will lead to more integrated airport solutions going forward.

How do you see the onset of mobile technologies adding to the security of airports?

N. Miles: Mobile technologies will become increasingly important as a replacement for traditional radio systems. They will allow communication of important information to all safety and security personnel. Today many airport employees are using cell phones, but primarily for voice-based communication. Dealing with situations is either predominantly via radio, paper or computer, depending on whether it is a planned event, such as a plane arriving, or an emergency, such as a security violation. Moving forward, these functions will increasingly be deployed on smart devices, with detailed automatic workflows driv-

ing the actions being taken. Incidentally, all forms of communication at this point become fully synchronized. For emergency situations, we have introduced a mass notification system called Sygnal which allows communication through all available communication sources, whether they are inside the building, outside or at your side.

What about protecting the perimeter of the airport?

N. Miles: Perimeter security has become a hot topic over the last five years, with many new and innovative technologies coming to market. However, depending on the situation, the environment or the weather, different solutions provide different levels of performance. Typically, to ensure high security a combination of sensors with a physical barrier such as a fence is required. The problem then becomes that multiple systems are managing the same area. Siemens solves this by combining sensor information geospatially in combination with intelligent video, with the ability to classify objects, and surveillance video to provide a comprehensive geospatially linked perimeter solution.



► CONTACT

Siemens Building Technologies
Zug, Switzerland
Tel. +41 41 724 24 24 · info.sbt@siemens.com
www.siemens.com/airportsecurity

BRANCH FOCUS ENERGY

Energy for Security

Interview with Michael Schmidt, Head of Company Security, RWE Aktiengesellschaft Essen

RWE is one of the five leading electricity and gas suppliers in Europe. The concern is active in power generation, energy trade as well as the transport and sale of electricity and gas. Over 70,000 employees supply more than 16 million customers with electricity and around 8 million customers with Gas. In the 2010 business year, RWE achieved a turnover of around € 53 billion. Our scientific editor Heiner Jerofsky spoke in the 11/2011 German issue of GIT SICHERHEIT with the Head of Company Security, Michael Schmidt (see photo) about the importance of his area of responsibility as well as about security objectives and strategies, and his personal opinion of the situation.

GIT SECURITY: Could you explain the Company Security division to our readers, its prime tasks and role within the worldwide concern?

Michael Schmidt: The spectrum of company security is broad. Starting with a risk analysis, we take on responsibility for strategic aspects like object protection, event protection, personal and information protection, but also travel security, forensics and cyberforensics, crisis management, Business Continuity management and Security Regulatory Affairs belong to the essential tasks of company security. The strategy provides the framework and the guidelines and builds the corresponding processes. Security compliance audits then close the control loop. The company security is established within RWE, and its importance has been confirmed many times in previous years. The responsibili-

ties mentioned before were discussed together with the various companies within the concern, and interfaces and reporting channels with the Security Division agreed upon. Company Security is always there operatively, for example, for forensics, emergency exercises and individual subjects (such as evacuation of the DEA employees in North Africa) when multiple concern companies are affected or if there is an unusual situation. Through the speed of modern-day communications (internet, Twitter etc.) we have found that the big problems or questions always land at group headquarters. The Company Security division is located in the Group Center of RWE AG, and I report from there to the Personnel Director. The Corporate Governance of RWE dictates that I am also technically responsible within a specified framework for the subject within the group companies. Company Security – as a higher-ranking, controlling organizational unit - consists of experts for the various areas of expertise. There is one 'single point of contact' Security Manager in each group company who looks after the operative implementation. Besides that there is a 'Security Services' division within RWE Service GmbH in which the operative services are bundled. I am also joint divisional Head in order to guarantee uniform management. That means: "What I strate-

gically plan, I must also operatively implement". With this degree of realization in this way we get close to the so-called Business Enabler.

How complex are the security requirements of an energy provider in fact?

Michael Schmidt: If you just consider electricity as something natural that comes out of the socket then power supply looks very simple. If you look behind the scenes, however, you see very complex, partially inter-networked structures. From the security point of view, there are central administration buildings with many employees and decision-makers. There are technical control centers and also 'trading floors'. On the generation side there is a portfolio of large fossil power stations that are permanently manned and smaller installations, such as those for renewable energy sources, where as a rule there are no employees on site. In front of the large fossil power stations are the supply lines of the energy carriers or, in the case of RWE, our own coal mining. RWE operates the only crude oil drilling and pumping rig in Germany. By comparison, the distribution of electricity demands a completely decentralized structure. There are only very few permanently manned locations, a multiplicity of switching stations at different voltages (transformer stations, local network stations etc.) and lots of lines and masts in between them. I could continue the list indefinitely and would not even start to relate our activities abroad. The message here is:



you have to understand the physical and commercial sides of the business and set priorities on the basis of an integrated total security concept, otherwise there is a real danger that you end up just spinning your wheels.

What particular objectives and strategies do you and your employees follow primarily and how high is the damage for your concern that arises from criminal activity?

Michael Schmidt: We have defined six significant strategic measures:

- Security framework: finalizing guidelines, structures and processes.
- Object protection: clustering of objects according to minimum standards, an inventory of the current situation, identifying target vs. actual deviations, (re)equipping of objects according to priorities, setting technical standards and introducing standards into the purchasing processes.
- Information protection: establishing media and technology-wide information protection. Company security took over strategic IT security from the IT division over two years ago and the merger has paid off.
- Crisis management: improvement of organization, equipment, interfaces and exercise situations. The evacuation of employees in North Africa at the beginning of the year showed how important a functional crisis management team can be.
- Travel security: here the company security division is needed as the point of contact. The processes have been so automated in the meantime that we are alerted immediately of planned trips to regions or countries that are considered critical and we can initiate any necessary measures.
- Creation of security awareness: after establishing them with company management, we are now trying to anchor security matters more with the employees. The recently completed reworking of our Intranet to a security portal is just the first step in this.

To answer the second part of your question: our company-wide reporting channel system for suspicious activity is now running into the third year and is becoming ever better accepted. Here the forensics division works hand-in-hand with the authorities. Current weak spots are the theft of materials, copper theft above all, spurned on by the price rise in recent years. The swaying of public opinion against the 'atomic concerns' has also led to an increase in crime, such as damage to our property, but in individual cases also directed at our employees. Energy suppliers continue to be a hot discussion topic and a target of the extreme political left-wing.

According to security experts, energy suppliers must fulfill particularly high standards for the protection of their employees and systems. Attacks and interruptions to the gas

or electricity supply have a significant effect on the whole population, commerce and our prosperity. Could you give our readers a broad overview of your security concept?

Michael Schmidt: You are talking about the subject of critical infrastructure. There are various activities at a political level regarding this and, together with the other large suppliers, we are in contact with the politicians. We work in various committee together and orientate ourselves internally toward recommendations such as the 'Basic protection concept'. What I view critically, however, is the development of 'horror scenarios', in particular with supposed terrorist activities, with the demand that the energy suppliers should now please preventatively configure the entire system to be 'absolutely safe against all external influences'. Such a networked structure cannot be completely secured; much more to the point is the securing of important switching centers and the provision of recovery capacity. A secure energy supply has always been a legally stipulated task in our industry. Further, corresponding recovery capacity of material and employees has been and is maintained. Whether the components then fail because of an attack or for technical reasons is secondary for the downstream processes of technical recovery. As Security, we assist by providing increased protection of the switching points and systems as well as the protection of materials. Add to this our contribution to crisis management and business continuity management. We are currently looking more closely at possible threats through the networking of telecommunications systems. The discussion about critical infrastructure also highlights the conflict between competitive demands and those of security. If the state requires a higher level of protection, for example through risk scenarios, than the analysis of the suppliers envisages, then the question must be answered of who carries the additional cost. This applies particularly to sections of the networks where the incentive legislation commits the network operators to achieve efficiency targets and improvements. The politico-economic objective is the reduction of transit charges.

Security is a flexible term and is always achieved when nothing happens. The effort associated with preventative measures is therefore difficult to justify, as long as no large losses occur. Could you explain your security philosophy to our readers and also how you manage the balancing act between effective protection measures and affordable costs?

Michael Schmidt: I cannot confirm a sudden crisis neither for RWE nor during my time at Deutsche Post World Net. Here, as there, there is definite recognition by the entire Board of Management of the need for functional security to protect employees and materials as well as immaterial assets. Naturally there are conflicts

Zugegeben –
alles kann er auch
nicht, aber in der
Zutrittsorganisation
ist er brillant.



blueSmart

**Clever. Komfortabel.
Flexibel. Die elektronische
Zutrittsorganisation.**

- + Schlüsselbetätigtes System
- + Virtuelle Netzwerk-Technologie
- + Virale Befehlsverbreitung
- + Rückprotokollierung von Zylinderdaten an die Zentrale
- + Online-Komfort zum Offline-Preis



over the distribution of internal resources that you have to deal with. To survive here it is always necessary to get a picture of the type and scale of fraudulent activity. One really needs 'real time information' and, to be taken seriously, one cannot draw on global threat scenarios. One also needs the same transparency with regard to the resources and investments for security. The necessity, synergy potential, bundling effect, technology or personnel requirement as well as make-or-buy decisions must be permanently questioned. Benchmarking and market comparisons should not be foreign to a security division. RWE is currently in the situation that the most varied solutions are being used in the very historically developed constitution, in particular in object protection. But through centralized Company Security, that has only existed in this form for a few years, we are able today to drive standardization forward together with the group companies. In this way it is possible to improve the level of protection and also the cost situation. Naturally these are trade-off options that at some point will reach their end.

The atomic power stations, right up until their demolition, all other power stations and systems but also the electricity and gas networks must be well protected against terrorist and criminal attacks. How do the security personnel operate and what particular qualifications do you demand from your security personnel in such important positions?

Michael Schmidt: Nuclear legislation applies to the atomic power stations and the state monitoring authorities have very explicit requirements here. It is incidentally a very competent

and beneficial security partnership in which we discuss the subject, and not just since the events of 11 September. With electricity and gas networks there are 'interstates', 'highways', 'urban' and 'rural' roads. RWE has not operated gas 'interstates' in Germany, and together with our ex-subsidiary Thyssengas went the 'highways'. The electricity 'interstates' are grouped with Amprion, in which RWE holds a 25.1 percent stake. We also don't lose the subject of security from our focus here either.

A great deal of technical effort is required to protect all the systems. Which technologies for control centers, perimeter protection, access control and video surveillance have in your opinion proven themselves in practice for a concern of your size?

Michael Schmidt: I would not like to talk here about individual technological aspects; that would go too far in this context. In general we lay down the specifications for, amongst others, alarm systems, video and access control systems for company security by putting the products into the electronic buyer's catalog. The companies within the concern then use this service and we thereby ensure the compatibility of the security systems that are used. One major recent aspect was the further development of the Service Card, the RWE employee ID card. The chip-based version that we used before had some weak points and was hacked so a concept for a new development on the basis of best practice had to be generated immediately. The resultant White Paper, that was published in trade magazines and also issued at various conferences, initiated new developments from the manufac-

turers in the direction of the requirements we described. RWE developed the necessary software together with another DAX company. As a result, we intend to establish the approach as a standard of the International Organization for Standardization (ISO). It's quite a novelty that a customer shows the way to his suppliers! Of course, we're always open to technical improvements such as thermal cameras, biometric systems or drones that we sometimes use or want to use. But despite a love of security technology, we mustn't lose sight of the overall process. The video camera alone doesn't improve the level of protection, leaving the pure deterrent factor aside. Behind the camera there is a whole chain of effects, starting with the connection back to a constantly manned location, the correct recognition and evaluation of events up to appropriate intervention and restoration to the original state. We have to keep the whole thing in mind and we need trained security staff for that.

Supply companies are moving in a rapidly changing market. As well as the opportunities, risks must also increasingly be taken into account because the security situation changes daily and can very quickly become a dangerous company crisis. What fundamental measures have you taken in crisis management to be able to react to such critical developments and have your plans and approaches changed since the atomic accident in Japan?

Michael Schmidt: Our concept is built on stability and reliability. Our motto "Act, don't react" bans any form of impulsive moves to the past.



RWE security control room

The atomic accident in Japan has led to a whole palette of measures like no other event. As you know, there were some 'stress tests' afterwards that also included security checks. Apart from that, we never rest on our laurels and we successively improve our crisis management. So we work together with federal offices, in security partnerships, through dialog in security associations, with exercises like Lükex. We have gained valuable knowledge through the evacuation of our employees from Egypt and Libya. One of the next challenges will be re-entry into Libya, when the situation there is more stable.

Our readers are experts, users and manufacturers from all industries and many locations who try to solve security problems using organization, technology and personnel. How do you manage to continuously evaluate the specific situation and endangerment of individual installations and what are the current main security priorities?

Michael Schmidt: Because of the large number of objects, the clusters and the corresponding security requirements are well defined. The most important element was to anchor the budget for the security aspects into the currently running processes. Everyone will always sympathize with recommendations to improve security, but what is the use of that if no money is there. Apart from that, we have a specialist department that comprehensively and competently handles the subject of security equipment. The team watch the market very closely and are therefore always up-to-date. Together with the evaluation group in my division, we always have our ears to the ground for situation and danger analyses and can promptly recognize and solve any security issues.

The cooperation with various different government security agencies is both necessary and important for many objects and tasks. How important are information, assessments and situation appraisals from these sources and what information and specialists do you include in each relevant regional situation appraisal?

Michael Schmidt: Very important! We generally carry out our own regular open-source analysis; for this we draw in particular on the know-how of the Security Managers of all RWE group companies and that of the government agencies

and associations (ASW, VSW, ACFE, ASIS, BDI AFS, BKA GP Initiative etc). With regard to travel security we use the resources of a provider of country analyses.

How do you consider the general security situation for such large companies in Europe and worldwide to be?

Michael Schmidt: The general security situation is getting more difficult internationally. Energy supply has, apart from just the market requirements, ever more national and social components. The provision of inexpensive energy is a highly critical matter for the stability of many countries. Of course, this criticality is known by those that want to undermine some state regimes and thereby the internationally active energy suppliers inevitably drop into focus. Added to that comes the problem of internationally organized crime while state security structures are not being globalized. My personal wish is therefore the energetic construction of security authorities that operate at a European and international level. For Germany, however, I can only praise the approach of the security authorities to industry. We are on the right path here.



The interview was conducted by:
Heiner Jerofsky
CID Officer (Ret'd)

VISUAL DISPLAY SOLUTIONS FOR COMMAND & CONTROL – MADE IN GERMANY

Your competent partner for complete large screen solutions

-) **LED-lit DLP® Rear Projection Cubes:** Many different sizes and resolutions
-) **Super Narrow Bezel LC Displays:** Especially designed for modular video walls.
-) **Professional LCD Monitors:** Designed for professional use in sophisticated applications. Resolutions in full HD and higher.
-) **Graphics Controllers:** Display of any data signals. Hardware decoding for IP video streams with special input boards.
-) **Wall Management Software:** Perfect wall control with the eyecon software. Flexible solution, simple and efficient alarm management.
-) **eyevis GmbH,** Hundsschleestr. 23, 72766 Reutlingen/Germany
Tel.: +49 (0) 7121 43303-0, Fax: +49 (0) 7121 43303-22, www.eyevis.com, info@eyevis.de



eyevis
PERFECT VISUAL SOLUTIONS

VIDEO MANAGEMENT

Ready for the iWorld

Benefit from Innovations in Video Management Software SeeTec 5.4

SeeTec, one of the leading providers of video management software in Europe, is showcasing the new software version SeeTec 5.4. Containing a large number of new features, the current software release is one of the most innovative ones in the history of SeeTec.



With the SeeTec MobileClient for iPhone, SeeTec showcases another highlight: It can be used to access a SeeTec installation on the go via WiFi or 3G

An additional component is available within the SeeTec Multi Solution Platform which allows a seamless integration of the video system into the processes and workflows of customers. The SeeTec counting suite provides counting of objects or persons within the camera view. Like the SeeTec Analytics product range, it is based on powerful technology from ObjectVideo, one of the leading companies in the world in the video content analysis industry. The ObjectVideo capabilities are seamlessly integrated into the SeeTec software. Both calibration and creation of counting rules and scenarios can be completely done within the SeeTec user interface. No time-consuming connection and configuration of third party modules is necessary.

More than Safety and Security

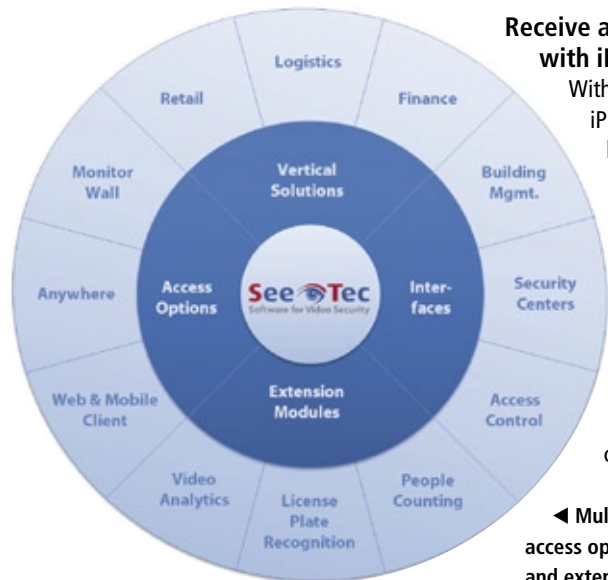
The addition of this high-level counting capability enables the user to extract valuable business intelligence about the retail and transportation environment, assuring a constant flow of information to aid business decision-making and increase operational effectiveness. Monitoring the flow of customers can for example support decisions to optimize the placement of products in a supermarket, opening up additional revenue perspectives. Raul Fernandez, CEO of ObjectVideo agrees: "Through the utilization of our patented counting capabilities, users of the SeeTec Multi Solution Platform will be able to make more intelligent business and operational decisions across a variety of vertical markets."

is on patrol. In addition to alarm management and access to live and archive images, software buttons can be used in the SeeTec MobileClient for iPhone e.g. to switch lights on and off or to open doors which are integrated into the surveillance system by I/O modules. The SeeTec MobileClient is available on an optimal basis for SeeTec Enterprise or ProBox ecosystems. A version which will be optimized for visualization on the iPad is currently in preparation.

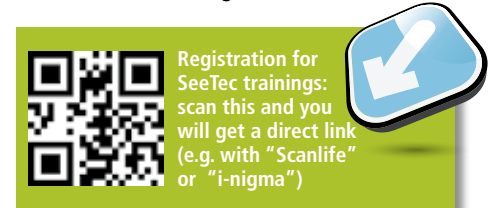
Another innovative feature is available with the SeeTec Multi Installation Login, which makes life easier especially in very complex system environments as well as in security centers. It allows the user to be connected to up to 15 SeeTec main servers in different installations simultaneously. Devices and entities of all available servers (cameras, views) are displayed within the established tree structure. In addition to live view, archive research and alarm handling for all connected servers, the Multi Installation Login supports the SeeTec SIP feature which allows it to establish VoIP communication e.g. to intercom units.

Receive and Manage Alarms with iPhone

With the SeeTec MobileClient for iPhone, SeeTec showcases another highlight. It can be used to access a SeeTec installation on the go via WiFi or 3G. The owner of a medium-size company can for example receive and manage alarms from the perimeter protection system during the weekend, allowing him to forward evidence directly to the police without any delay. A factory security officer can access camera images while he



◀ Multi solution platform: variety of access options, vertical solutions, interfaces and extension modules.



▶ CONTACT

Andreas Conrad
 SeeTec AG, Philippsburg, Germany
 Tel.: +49 7256 8086 0 · Fax: +49 7256 8086 15
 info@seetec.de · www.seetec.de



BUYERS GUIDE

SAFETY AND SECURITY

EVENTS

LEAD GENERATION

TOP-STORIES

NETWORKING

ONLINE-ARCHIVE

INDUSTRY NEWS

WEBINARS

GIT-SECURITY.com

WHITEPAPER

RSS FEED

JOBS

PRODUCTS INFORMATION

WEBCASTS

www.GIT-SECURITY.com



INTERVIEW

Smarter Security

Interview with Johan Park, Managing Director for Samsung Techwin Europe



Samsung has recently bolstered its IP and network product range with the introduction of Full HD megapixel network cameras and is on its way to become a total solution provider for security. Some weeks ago Johan Park was appointed Managing Director of Samsung Techwin Europe the company responsible for promoting and supporting Samsung professional and consumer security equipment and solutions across Europe, Russia and CIS. GIT SECURITY interviewed Johan Park about Samsung's plans for the security business.

GIT SECURITY: Mr. Park, you are already familiar with the European market through your recent positions at Samsung. What was your role within Samsung before you were appointed Managing Director for Samsung Techwin Europe?

J. Park: I have worked for the Samsung Group for 24 years. I was previously Chief Financial Officer of the Group's Security Solutions Division with special responsibility for operational management issues, personnel and the implementation of work processes and systems. My understanding of the European market has been acquired whilst carrying out a number of senior roles for the Samsung Group, including six years as a Director of Samsung Electronics Nordic division, during which I was based in Sweden.

How do you see Samsung's position in the European security market?

J. Park: Samsung Techwin has been acknowledged by independent research companies as one of the top three European security brands. However, until recently our strength has predominantly been in the analogue marketplace

where we are clear leaders across Europe. Whilst we have been enjoying this leading position, our R&D teams have been developing our IP range over the past two or three years in line with the industry trend towards IP based systems. We now have a very comprehensive range of IP devices from cameras to recorders and I am confident that we will achieve a significant market share of the growing IP market during 2012 and beyond. Our ability to integrate products together from various technologies and the upgrade path we offer customers from analogue to IP are key strengths that customers really value.

You have added access control products to Samsung's security product range recently. What has been achieved on your way to offer security solutions beyond video surveillance?

J. Park: Our Access Control range is proving to be a valuable and successful addition to our product portfolio. It allows us to compete for projects which have up to 128,000 doors with a choice of reader technologies which encompass fingerprint recognition, proximity and smart card & PIN, as well as time and attendance options. Equally important, it equips us with the ability

to offer a fully integrated solution. For example, a Samsung Access Control solution can be fully integrated with Samsung's SRD DVRs and selected SRN NVRs, allowing users to achieve maximum advantage from their investment in a security system by ensuring that access control events and alarms can be reliably synchronised with relevant video. This type of integration is very easy for installers and system integrators to achieve, and being Samsung, is fully future proof and scalable.

In the past Samsung has grown its market share for analog video products significantly in a quite short period of time. Do you expect to grow your business with the new IP products at the same speed?

J. Park: Samsung has developed its IP and network range to the extent that it now rivals the breadth of its analogue product range. Until recently, Video over IP was perhaps only perceived as a solution for large projects, but Samsung are increasingly seeing the technology utilised in small to medium sized installations also. In a tough economic environment, customers are looking for maximum benefit from their invest-

ment in security. Samsung believes that IP network based systems can now provide installer and system integrators with an excellent opportunity to generate new business, whilst offering clients substantial cost and operational benefits compared to traditional analogue based solutions. The answer to your question is therefore definitely 'Yes' in that we are looking to achieve substantial growth in the sale of products in our IP and network solutions portfolio with the continuing support of our loyal pan-European customer base. The key to our success is however, allowing customers to choose the best solution for their specific application or environment. Our product catalogue now provides customers with a choice that includes a comprehensive and competitively priced range of analogue cameras, DVRs and monitors, a complete end-to-end IP solutions range, license-free viewing and recording software, and an impressive line-up of high definition megapixel cameras. 'Hybrid' options include encoders, which provide a cost effective and easy to implement method of adding analogue cameras to an IP/network based video surveillance system, and HD-SDI cameras which allow the transmission of uncompressed and non-packetized Full HD (1080P) video over analogue cabling. We also have an ongoing programme to integrate with leading ISVs (Independent Software Vendors), that offer 'open' software specifically designed to facilitate the integration of equipment and systems from dif-

ferent manufacturers. This is to further provide customers with the flexibility to choose the perfect combination of security products to match their specific requirements.

Samsung's focus has been on cameras in the past. What role does the new series of network video recorders play, you will launch now?

J. Park: It is true to say that in the past Samsung Techwin's professional security division was only really known for its analogue cameras. Our product portfolio has, however, changed dramatically over the last three years with over two hundred new products being launched, including HD megapixel cameras, domes and NVRs. Collectively, they provide installers, system integrators, specifiers and end-users with the flexibility to specify the best combination of products for the job in hand. Our NVRs will, I believe, play a major role in our success over the coming months. Using H.264 compression, they give customers the choice to record images in real-time at a variety of resolutions and can therefore be configured to minimise storage requirements and bandwidth consumption. Our recently launched four channel SRN-470D and sixteen channel SRN-1670D NVRs will prove to be extremely popular amongst installers and users as they have been designed to have the look and familiarity of a DVR, whilst delivering all the benefits of an NVR

and for larger solutions. we have recently updated our Net-i Ware network recording software to be able to manage the video streams from a large number of HD megapixel cameras.

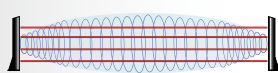
You have announced the introduction of new pre and post sales initiatives. What can we expect from Samsung in 2012?

J. Park: Our efforts during 2012 will be based on a philosophy of delivering Smarter Security. Producing 'Best of Class' products and solutions is of course not in itself a guarantee of success. We also need to add to the exceptional value that our products offer by delivering the highest levels of pre and post sales support. Training is at the heart of a range of our support services which also includes free system design, free technical support and a full three-year warranty. During 2012 Samsung will be running IP network solutions training courses for installers and system integrators and on our stand at exhibitions, such as IFSEC, we will have hands-on workshop areas to give sales professionals and technicians the confidence to recommend, design and install integrated IP network based access control and video surveillance systems.

► CONTACT

Samsung Techwin Europe, Chertsey, UK
Tel.: +44 1932 455 308 · Fax: +44 1932 455 325
STSecurity@samsung.com · www.samsungsecurity.com

Perimeter Protection Systems over IP with **HYPERPOWER**



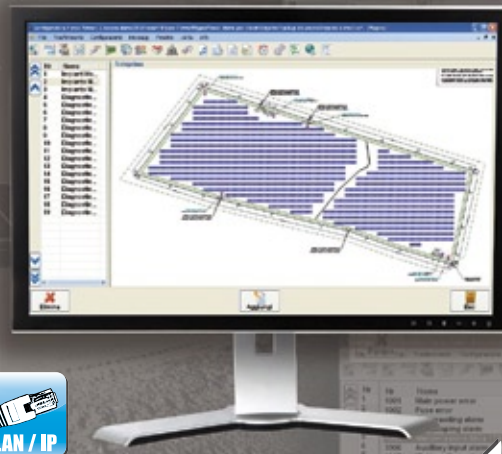
**Dual Technology Barriers
ABSOLUTE PLUS**



**Digital Microwave Barriers
DAVE**



**Fence Perimeter Protection
Systems**



SICURIT Alarmitalia has extended its range of perimeter protection systems with an advanced security platform designed and developed for large industrial integrated applications.

HyperPower features the management of over 3000 sensors through proprietary TCP/IP interfaces and a powerful graphic unit interface (GUI) which make alarm information fast, reliable and clear.

Find out more at www.sicurit.com



DISPLAYS

It's Not Hip to Be Square

New Display Design Releases Designers Creativity

Eyevis Omnishapes are small projection units, whose screen modules can be arranged almost arbitrarily. They are able to produce projected areas in different shapes, are surprisingly small but nevertheless extremely flexible in their application. Eyevis has created a new type of device with the development of this display that is drawing a great deal of attention in the industry.

The modules are applicable individually or as units together to form bigger projection walls. Every module has its own internal signal processor for the perfect geometrical adaptation of the input signal to its part of the overall picture that has to be displayed. The projections that use LED Technology are in an impressive high, pin sharp and in amazingly bright colors, and they are suitable for every color temperature too as the LED technology provides long-lasting color fidelity and advanced color adjustment facilities. The newly-developed Multi Cube color brightness adjustment option allows fully automatic setting and alignment of every Omnishape in a

connected video wall – individual readjustments are not necessary any more.

The technical constitution of the Omnishapes follows a modular principle. The displays consist of only three basic components: the projection screen at the front, a base frame in the middle and the projector at the back. Maintenance of the devices is possible from the front as well as from the back. The focus during development of the device lay upon simple installation, application and maintenance, as well as upon long durability and high operating safety. These latter two elements are assured by the use of qualitatively high-value components to a company-approved quality.

Shaping Up

The conventional display size specifications that we're used to seeing in data sheets don't really apply in this case because customer-specific shapes can be built. 4:3 corresponds to 480 mm x 360 mm, but 16:9, 16:10, 1:1, heptagonal, hexagonal or other required shapes are also possible. The depth of the entire unit is 410 mm and it weighs 12.9 kg. Signals up to 2k resolution are input over DVI with a loop-thru function to a split processor with no external processing necessary. Integrated shading technology with a True Color sensor ensures the best possible brightness under differing ambient conditions as well as color homogeneity across all modules of a display wall.

The display concept uses stackable frames with integrated air ducts, which means that

installations can be flexibly designed, either standing, lying or suspended from above without special assembly systems. Once installed, the LED-powered displays provide more than 60.000 hours durability, with no projector lamps to fail and no color wheels to jam. The concept also potentially provides attractive savings for rental companies who would only need a smaller number of projectors than the number of different frame shapes they hold in stock.

Through their concept they are predestined for the construction of different projected areas, sizes and shapes. Even rolling or curved walls are possible, making them ideal for advertisements, events and information boards. The small dimensions of the individual displays mean that they fit in almost every spatial situation. Self-supporting or flown constructions can be realized because bolting the frames together provides for the necessary stability. Through the funnel-shaped construction of the base frame and the variability of the shapes, concave, straight or convex forms are possible, giving the designer's creativity free rein.

► CONTACT

Eric Henique

Eyevis,
Reutlingen, Germany

Tel.: +49 7121 43303 118 · Fax: +49 7121 43303 22
info@eyevis.de · www.eyevis.de

BRANCH FOCUS ENERGY

Security for Energy and Utility Companies

Energy Summit: The EVU Forum at Bosch in Berlin

"The innovation is in the configuration", according to Bernhard Kempf, Head of Sales, Building Security at Bosch and, in the opinion of many security experts, he hit the nail squarely on the head. Really effective industry-specific security systems have ever shorter innovation cycles. Bernhard Kempf welcomed 100 international security specialists from the energy sector to an 'Energy Summit' at the offices of Bosch in Berlin in November. Norbert Seitz from the German Interior Ministry was exciting, reporting on how crisis and risk management and civil defense scenarios are made at federal and state level. Even Seitz didn't have an answer to the question of "Who is wearing the hat when the power fails?" – federal administration, the affected state or a government agency? It was posed by a man from E.ON, and GIT SECURITY will keep on it, to get at least some way toward a solution.

Stephan Schwenker of RWE Power AG explained about their fire protection organization.

Hot Discussion on Warm Images

Students Christoph Ickler and Bastian Nagel gave an insight into using heat-sensitive cameras for intruder and fire detection, and initiated a lively discussion amongst the security professionals. The next day, Marco Paschen of Vattenfall and Jörg Sanewski of Bosch reported on efficient access control in high-security areas, Dr. Jörg Kelleter, GTE Industrielektronik presented 'Special Sensor Technology for Power Stations' and Stefan Großgebauer of E.ON Kernkraft explained the Unterweser Atomic Power Station project. Dr. Henrik Hoff of AP Sensing then described fiber optic temperature measurement to improve operational safety.

Jörg Wießner, initiator Lothar Marth, Thomas Spitz and Dr. Michael Höyneck from Bosch closed with the use of iPads, iPhones & Co. in security technology, in protecting large property objects, a



universal danger alerting system and on future multi-sensor security systems. It is understood that it is intended to hold the event again regularly, perhaps also for other industries. GIT SECURITY will report in more detail in the coming months on the results of the Bosch EVU forum.

► CONTACT

Erika Görge
Bosch Security Systems,
Grasbrunn, Germany
Tel.: +49 89 6290 1647
Fax: +49 89 6290 281647
erika.goerge@de.bosch.com
www.boschsecurity.com



SICUREZZA

7-9 NOVEMBER 2012
Fiera Milano (Rho) - Italy

International Biennial Exhibition of anti-intrusion,
fire prevention, passive defence systems,
home and building automation,
intelligence and anti-terrorism, products and services
for the police and the private security firms



FIERA MILANO

Fiera Milano SpA - Strada Statale del Sempione, 28 - 20017 Rho, Milano - Italy
Tel. +39 02 4997.6236 - Fax +39 02 4997.6252 - areatecnica1@fieramilano.it

Promoted by

ANESICUREZZA
SICUREZZA E AUTOMAZIONE EDIFICI



Concurrently with





EVENT

Intersec 2012: Focus on Commercial Security

The Middle East's Premier Safety, Security and Policing Trade Event in Dubai

The increase in overall security threat perceptions has led to a huge increase in investment and expenditure on security infrastructure and commercial security systems by governments, public sector and private sector players in the Middle East region. Therefore commercial security is high on the agenda and is one of the key growth areas at Intersec 2012, the Middle East security, safety and policing industry's business and networking platform to be held at the Dubai International Convention and Exhibition Centre from January 15th to 17th.

Intersec 2012 Expected to Be Even Larger

Out of the 1,000 or so expected exhibitors to Intersec 2012, being held at the Dubai International Convention and Exhibition Centre in January, over 500 will be leading manufacturers, suppliers and service providers of commercial security equipment and services. Organiser Epoc Messe Frankfurt expects keen interest in the field from trade visitors and delegates looking for commercial security solutions. His Highness Sheikh Mansoor bin Mohammed bin Rashid Al Maktoum again will be patron of Intersec.

"We are grateful to H.H. Sheikh Mansoor for the royal patronage, which adds to the significance of events like Intersec," said Ahmed Pauwels, Chief Executive Officer of organiser, Epoc Messe Frankfurt. "The support and patronage of governments and local authorities have played a formative role in establishing Intersec as the premier show of its kind in the region," he added. "Over the last 14 years, Intersec's development

has reflected the expansion of the regional safety and security industries," said Pauwels. "It will continue to feature the latest trends and developments in the global sphere, facilitate and promote international trade and exchange of ideas and play a part in transforming the regional industry by promoting best practices in the region," he added. Current estimates indicate that the show will be considerably larger both in size and scope as compared to the record-breaking 2011 edition.

Conference and Seminar Programme

The event will also feature a comprehensive conference and seminar programme which includes a range of high-powered international speakers and regional experts offering insight on current hot button issues and industry trends and developments. Also held under the patronage of H.H. Sheikh Mansoor bin Mohammed bin Rashid Al Maktoum, the UAE International FireFit Championships will run alongside the event for the third year. Growing in size and scope year on



products to industry professionals from all over the world at Intersec in Dubai (German Pavilion, booth 3-317C). The company will display, in addition to familiar products like the Building Integration System, the Video Management System or Public Address and Evacuation systems, Veristo secure, the new Software Solution for Access Control and Security Management. Also, the revised version of the popular Public Address and Audio Distribution System Promatrix 8000 is going to be shown. "And with further products from the ranges of CCTV, Public Address as well as Fire and Intrusion, we will demonstrate how large our Advantage Line has grown by now", says Hakan Ozyigit Regional Director Security Systems, Robert Bosch Middle East FZE. The Advantage line caters specifically to the needs of those customers, who are looking for security devices of low to medium complexity, as for example required in smaller offices, schools, petrol stations or restaurants. In future, Bosch will continuously add products to this product segment, while at the same time broadening its portfolio also on the other end of the scale – offering tailored, comprehensive solutions for international projects of greatest complexity with its new Business Unit 'Engineered Solutions and Software'.

Another key player in the market, **Tyco Security Products** will presenting a full line of access control, intrusion & video surveillance solutions: American Dynamics victor unified

year, this year the Championships will welcome teams from across the GCC.

Also part of the outdoor programme, a full range of tactical rescues and close combat operations will once again take centre stage. Showcasing interactive scenarios across the fields of rescue, counter terror and law enforcement, the outdoor demonstration area proves to be a big draw for trade visitors each year. Running alongside the three day event will be a series of conferences and workshops covering Commercial Security, Maritime Security, Emergency Medicine and Emergency Preparedness for the Oil & Gas industries. The conferences and workshops will feature renowned international and regional speakers giving insights on the commercial security industry as well as a large slice of the vast security industry.

Regional Aspects and Global Impact

The programme of the show is designed to fit to the Middle East market. As there is a great demand for perimeter protection solutions

and integrated security systems for large facilities, many exhibitors have adopted their presentation to the needs of the Middle East customers. "Perimeter and premises security systems, motion sensors, access control systems, lighting and monitoring systems as well as enhanced IT security software are all expected to attract a strong response from the regional market," said Ahmed Pauwels, CEO of Epoc Messe Frankfurt. "Reassuring consumers and partners about a safe and secure environment is key to business growth in today's world. This is brought out by the fact that Commercial Security exhibitors will take up a whole extra hall at next year's event, indicating the high growth potential in the region," he added.

Key Players plus First Timers Buoyed by the success of Intersec 2011, Bosch, Schneider Electric, Assa Abloy, Sony, Axis, Panasonic and Samsung are amongst some of the key exhibitors that have already confirmed their participation.

Bosch Security Systems will present its latest and most popular

MINTRON

High-Definition Low-Light

1080p/720p 50/60fps CMOS/CCD HD Camera



Fiber-Optical CAM



HD-IP CAM

- HD 720p Multiple-streaming
- Codecs: H.264 / MPEG-4 / M-JPEG
- CVBS



3G-SDI CAM

- Uncompression video: 720p/1080p
- Video transmission based on coaxial cable
- Bit rate: 2.97Gb/s SMPTE 292M/424M
- One cable (Video/Audio/RS-232C/Power embedded)
- CVBS



MINTRON 3M DSP

Megapixel Camera Module

- Image sensors: 1.3-3M CMOS/CCD Sensor
- Built-in ARM926-EJ-S/Memory
- Digital video output: YUV 4:2:2 16 Bit (SMPTE 274M/296M)
- CVBS output: Over 800TVL (NTSC/PAL)
- Image adjustable: De-Highlight / BLC / DWDR / AGC / 3D DNR / removable IR-Cut / Fog-Reduction / Eclipse / Freeze / Digital P.T.Z
- Communication: RS-232C/OSD
- Low power consumption

MINTRON ENTERPRISE CO., LTD.
 No.123,Wu-Kung 1 Rd., Wu-Ku Industrial Park, Taipei (248), Taiwan
 Tel : 886-2-22990277 E-mail: service@mintron.com.tw
 Fax: 886-2-22989375 Web : www.mintron.com Skype: mintron3601









video management system Version 4.1 makes it fast and easy for airports, universities, hospitals and other large sites to display, manage and prioritise video and events with its Command Centre. Another Tyco brand, American Dynamics, will display the latest addition to the Illustra series of IP cameras, the Illustra 600 and 610 HD Mega-Pixel cameras, all designed to simplify installation and refine how security directors can take advantage of HD-quality video.

Also at the Tyco stand the CCURE 9000 access control system will be shown. It is scalable from a single site stand alone system to a multi-server distributed database security management architecture that provides local operation and reliability combined with global manage-



ment and efficiency, no matter the system size.

The focus on perimeter protection at Intersec has led **Harper Chalice** to exhibit in Dubai. Their electric fence security system PulseSecure will be demonstrated to the Middle East markets for the first time, as the company looks to take on new partners and Accredited Dealers to serve the Middle East markets. "We already have some excellent contacts in the region but our participation at Intersec 2012 will allow us to demonstrate the advantages of our UK-made technology to users, consultants and system installers first hand", says Mr. Harper.

Siqura, manufacturer of video surveillance solutions and member of the TKH Group, will present how its durable IP video systems provide complete, proven, and customized solutions that are made to last. Siqura will demonstrate a total security system at its booth in hall 4, booth 325C. Siqura cameras and codecs will be configured to DIVA, an IP-based video management system equipped with an array of video analytics for detecting and classifying objects, including faces and license plates.

Biometric Security Systems

With corporates and governments paying increasing attention to safety and security in the workplace and social environments, biometric

technology, access control systems and fingerprint recognition software are expected to attract considerable interest at the upcoming Intersec 2012. "Biometric security systems are in great demand globally," said Ahmed Pauwels. "We expect this demand will be reflected in the Middle East too through events such as Intersec, which bring together the security community from around the region," he added.

Biometric technology is at the heart of access control and security systems worldwide, being in widespread use at airports, border control posts, immigration, customs and security stations. Facial and fingerprint recognition is also governing access to computer terminals and servers at offices and workplaces as corporates get increasingly se-



curity conscious. In fact, recent figures from Wintergreen Research indicate that the global market for biometric security equipment i.e. biometric government identification program, law enforcement, and commercial fingerprint equipment, is expected to be worth USD 6 billion by 2012.

Due to increased interest in products and services related to commercial security, homeland security & policing and aviation security, the section is expected to grow exponentially for Intersec 2012. Exhibiting their range of biometric and access control systems are a range of companies including, Apollo Security Sales Inc, Biostream General Trading LLC, Boom Edam Ltd, Cardz Middle East Trading LLC, DataCard, IPTec General Trading, Nedap FZE, Prologix LLC, Suprema and Tyco Security Systems.

Interest in Enhanced IT Security Measures

With cyber crime increasingly raising its ugly head around the region, there is a growing need being expressed across the security community for greater awareness about the threat as well as for more stringent measures to control this dangerous trend.

Countering cyber crime and the growing demand for enhanced cyber security measures is expected to be one of the areas of interest

at Intersec 2012. With recent reports indicating that the Middle East market for IT security software is expected to grow at a CAGR of over 34% from 2010 to 2013, interest in the regional market among international manufacturers and suppliers continues to be high and is expected to be reflected at the upcoming Intersec.

In the UK Pavilion at Intersec, **Christie EMEA** will be bringing their expertise in surveillance and security systems, data centre and network operation centre solutions to Intersec. "Security of information is vital for any business operating today, our innovative control and display solutions offer companies and organisations in the region a reliable means to achieve that assurance," said David Griffiths, Market Development

Manager, Control Rooms, Christie EMEA.

Exhibiting its range of transmission solutions for analogue, IP and high definition CCTV systems is **KBC Networks**. "We provide secure and ruggedized transmission solutions with broad operating temperature ranges and hardened casings," said Owen Price of KBC Networks. "With a product range that covers fibre optic, wireless, Ethernet and digital video transmission, we're able to offer our customers the best technologies to fit their system requirements." At Intersec KBC will be promoting its fibre optic range, its latest range of wireless products and its industrial Ethernet range of media converters and switches. The upcoming Intersec 2012 in January is going to have a dedicated Information Security pavilion for the first time in the history of the event.



▶ CONTACT

Epoc Messe Frankfurt, Dubai, UAE

Tel.: +971 4 3380102 · Fax: +971 4 3385272

intersec@uae.messefrankfurt.com

www.intersecexpo.com



SIEMENS

www.siemens.com/cerberus

Does anyone know a clever fire safety system starting with a “C”?

Cerberus® PRO – enjoy protecting!
The new generation of a clever fire safety system.

Protecting people and assets. Securing business processes and continuity. This is what fire protection is all about. Cerberus PRO from Siemens is a smart fire safety system for fast, proven fire detection, alarm signaling and control. Its broad portfolio comprises powerful control panels from stand-alone to networkable units, reliable detectors with patented technology and a comprehensive range of loop-

powered peripheral devices. All system components have special safety features installed that increase safety even further – such as degrade mode in control panels or built-in isolators in each detector and peripheral device. Thanks to its straightforward system design, Cerberus PRO can be installed easily and quickly.

Answers for infrastructure.

SECURITY FOR PUBLIC TRANSPORTATION

Intelligence **Creates** Security

An Integrated Approach for Train Stations



While airport safety and security are widely being discussed in the public, railway security is in most parts an insider issue. But new threats require a lot more attention, and as railway stations are changing their character with airport-like check-ins for high speed trains, extended shopping areas and integrated office buildings, security becomes ever more important. Fire alarm and evacuation systems as well as intrusion detection, access control and video surveillance must be adapted to meet new requirements, but what's more, they need to be integrated into a single security system with central operations and management.

Operators of large train stations are faced with a wide variety of safety requirements. The necessity of equipping the station concourse including all platforms as well as all other buildings with fire alarm and extinguishing systems is quite clear. However, the essential task of protecting human lives can only be effectively fulfilled by such systems if they are coupled with high-quality Public Address (PA) systems that can be

used to issue easily understood instructions for evacuation in the event of an emergency. There is a considerable need to catch up here for many train stations. In addition, video cameras are needed to monitor buildings as well as extensive open spaces with limited visibility. Critical areas such as signal towers, railway monitoring centers, retail shops or equipment rooms must also be secured against unauthorized access by means of intrusion alarm systems and access control systems. More and more often, all these systems are being integrated into an intelligent building management system.

Fire Detection and Prevention

High fire loads such as cable networks, extensive technical equipment, luggage that cannot be examined, as well as the inattentiveness of passengers or staff pose a permanent danger of fire. A comprehensive fire protection concept must therefore be developed, based on the structural conditions of each train station. The relatively small underground through station Bruxelles-Central has completely different requirements in this regard than the above-ground Gare du Nord in Paris, which also has physical barriers for access to the high-speed trains.





It is never possible to completely exclude the occurrence of a fire. However, to avoid a fire or a smoldering fire turning into a disaster, early and earliest detection is of particular importance, because in its first stage of development a fire can usually be fought without major consequences and without evacuation.

Therefore, adequate coverage of all parts of buildings with fire detectors is a matter of course. However, the fire alarm system should also be capable of localizing incoming alarms – the more accurately the better. In extensive buildings like train station halls, the information that a smoldering fire has been detected somewhere is not of much use to the fire department. Modern alarm panels with intelligent bus systems therefore provide a way to uniquely identify and also localize each individual alarm. To accomplish this, optical, thermal and chemical sensors with different levels of sensitivity can be used to accommodate varying requirements of individual sections of the building. In up-market retail shops or lounges, it is even possible to use nearly invisible detectors that are completely integrated into the ceiling and fit ideally into design oriented interiors

The ever growing cabling systems in major train stations represent a specific challenge for fire fighters as well as for planners of fire detection systems. Here, the use

of low smoke zero-halogen (LSZH) cables is recommended, as these are harder to ignite than standard PVC insulated cables. Also, they release much smaller amounts of toxic and corrosive gases during combustion. Finally, LSZH cables help to keep evacuation routes and attack routes for firefighters smoke free – and smoke is usually more dangerous than the fire itself.

Another critical component of the station infrastructure needs special attention, too: the data center. Not only can a fire cause tremendous physical damage here, but it has the potential to disrupt the entire operation of a train station for days, if not weeks. In order to prevent fires here, it is advisable to reduce the amount of oxygen in the data center. This will reduce the opportunity of a fire getting started, but it will not altogether eliminate the risk. Measures must therefore be taken to detect incipient fires in a very early stage. This is where aspirating smoke detectors come in, which consist of sampling pipes in the monitored area and a detector unit that can be located elsewhere. The detector generates a vacuum in the sampling pipes to ensure continuous air intake from the monitored area and will detect smoke particles therein with very high sensitivity.

There are often different areas that have very individual requirements of the fire alarm system, especially in large and expansive

railway station facilities. In such applications, it is recommended to use modular and networkable systems such as the Modular Fire Panel 5000 Series from Bosch. This does not only facilitate the deployment of individually configured

and scalable fire panels for different sections of the station, but also enables networking of multiple panels spread across the premises. These networked panels can then be operated and managed as a single integrated system. They also lend themselves to being part of an overall security system encompassing access control, intrusion detection, and video surveillance as well.

Evacuation

Systems for alarm signals and evacuation go hand in hand with fire protection technology and the need for integration and central operations is evident. In turn, alarming must be combined with the escape route control systems in order to guarantee safe and fast evacuation of the endangered area. Voice alarm systems play an important role in such evacuation procedures, for example to provide meaningful guidance to the flow of people to the stairways, and to instruct people to take their baggage with them in the event of a bomb alarm, but to leave everything



HOW WILL YOU EVACUATE SAFELY?



If you don't know the answer then Evac+Chair can supply you with the right solution.

Evac+Chair is a universal evacuation solution for smooth stairway descent during an emergency. Single user operation ensures no heavy lifting or manual handling is required during emergency evacuation procedures.

For more information visit our website at: www.evacchair.co.uk



T: 06238 984 6810

F: 06238 984 6835

T: +44 (0)121 706 6744
E: enquiry@evacchair.co.uk
W: www.evacchair.co.uk

Evac+Chair International Ltd
ParAid House Weston Lane
Birmingham B11 3RS



in the event of a fire. In addition, research has shown that the response time for spoken alarm announcements is shorter, because a ringing bell is often interpreted as a false alarm or fire drill, which then slows down the evacuation process.

Hence, the Public Address system takes on one of the most important functions in train station safety in an emergency. During normal operations, it can also be used to provide clear information to passengers and visitors, such as the announcement of departures or arrivals. From a technical perspective, a PA system is one of the most critical areas because the systems have to be adjusted to the prevailing premises and acoustic conditions in each case. Here, serious planning mistakes are often made, which can easily lead to warnings not being understood or only poorly understood. Still today, one often hears scratchy train station announcements that are mostly incomprehensible when a train is arriving or departing. However, there are speaker systems like the Vari-directional Arrays from Bosch that were developed especially for environments with poor acoustics. They ensure optimum sound quality and speech intelligibility throughout the railway station.

Access Control and Intrusion Alarm Systems

The management of a large number of employees as well as staff of external companies and security areas of different sensitivity require effective and flexible access control.

It is not sufficient to simply assign different permissions to the different people. Rather today, all accesses and unsuccessful access attempts must be logged to ensure compliance with government and other regulations. This way, the operator will know at any time who entered the different rooms and/or who tried to. In order to prevent misuse of access cards, the use of biometric recognition systems is recommended.

While authorized employees usually enter security-critical areas via the designated accesses, unauthorized persons look for other possibilities. Equipment rooms, signal towers, control stations, etc. must therefore also be secured against undesired visitors by means of an intrusion alarm system. The same approach applies to the increasing number of retail shops. Many major train stations have developed into true shopping centers over the past few years. Some were even planned as such right from the start, like the new main train station in Berlin. Further, train station premises often include office buildings or hotels that also have to be secured. Modular intrusion alarm systems like the Modular Alarm Platform 5000 from Bosch facilitate a very flexible system architecture in those types of heterogeneous environments. It has remote control units and a refined system of rights in order to meet the needs of the individual areas while enabling central management at the same time.

Video Surveillance

Video surveillance of such extensive premises such as those found at large train stations is a considerable challenge to security personnel. On the one hand, an expansive outdoor area must be secured, and on the other hand there are also large built-up areas with quite different traffic patterns. In addition, the check-in procedure for many high-speed trains is almost like that of an aircraft. Passengers check their luggage in before departure and receive it when they reach their destination. In such cases, the luggage areas must also be monitored. This is not only for security, but also helps to find lost bags. Besides surveillance for larger areas, it is also often necessary to set up dedicated cameras at specific locations such as those where automatic ticket machines are installed.

Ultimately, video surveillance can also be used as verification for access control or intrusion alarms as long as the individual systems are

interoperable and managed through a central integration platform.

While large inner-city train stations are very popular locations as a rule and are therefore not entirely easy to monitor, just the opposite situation is also a problem. There are many smaller train stations with less passenger traffic that are not used very frequently. Today, such train stations are mostly operated without any dedicated staff. Here, it is necessary to organize the video surveillance using regional traffic monitoring centers. Because of the greater distances, this can usually only be realized using IP-based systems, since video data can then be transmitted over an existing infrastructure.

Besides the cost-effective transmission and utilization of already existing networks, Video over IP also has other benefits: Digitization makes it possible to use low-cost video memory that can be placed anywhere in the network to keep video images for freely definable time periods. Convenient search functions then make it easy to find those pictures and video sequences.

Video image analysis has also made tremendous progress through the use of digital technology. On the one hand, modern video image analysis systems facilitate far more accurate recognition of incidents because lack of concentration and other human errors are excluded right from the start. On the other hand, it makes security personnel much more efficient because they only have to respond to alarms instead of monitoring a multitude of live video streams.

Central Management

Thousands of notifications and alarms from all security areas and technological facilities need to be managed and coordinated on a daily basis in the security monitoring center of a train station. This can only be mastered efficiently if all security systems are integrated to allow for central alarm and notification management. This is usually accomplished using a building management system such as the Building Integration System (BIS) from Bosch. Apart from managing security systems, the BIS can also be used to monitor other technical systems like conveyor systems as well as heating, ventilation and air-conditioning.

In building management, all incoming notifications from connected subsystems are summarized, visualized and processed on a standardized user interface. This is simplified through the increasing use of classic network technology such as Ethernet and IP, which represent a common and cost-efficient technical integration platform.

Intersec Dubai · Hall 3 · Stand 317C

► CONTACT

Erika Görgé

Bosch Security Systems, Grasbrunn, Germany

Tel.: +49 89 6290 1647

emea.securitysystems@bosch.com

www.boschsecurity.com

secutech

International Security Expo

The 15th International Exhibition and Conference for
Electronic Security, Info Security, Fire and Safety

REGISTER ONLINE NOW!
www.secutech.com

Your Portal to Powerful Partnership with Security Manufacturers

Where over 500 original security manufacturers
launch their latest turn-key solutions
for your local needs

18 - 20 April 2012

Taipei Nangang Exhibition Centre, Taiwan

www.secutech.com

**Best for OEM/ODM seekers, distributors, and
system integrators!**

Enquiry:

Messe Frankfurt New Era Business Media Ltd

Ms. Lois Lee

lois.lee@newera.messefrankfurt.com

Tel: +886-2-2659 9080 Ext. 358





INTERSEC DUBAI

Reliable Fire Safety Products

Siemens Is Launching „Cerberus Pro“ with ASAtechnology for the Middle East Region

At Intersec in Dubai Siemens Building Technologies is launching its well-proven fire detector product line “Cerberus Pro” with ASAtechnology for the Middle East region. Siemens Fire Safety is a first time exhibitor in Dubai, thereby emphasizing the importance of the region to its business. Siemens has been operating in the Middle East market for 75 years and intends to further expand its presence through the exhibition.

Reliable and Fast Detection

The Siemens Building Technologies Division has added two new fire detectors to its fire safety product line Cerberus Pro. Both devices use proven ASAtechnology (Advanced Signal Analysis) to detect fires quickly and safely even in environments with challenging requirements.

In addition, one of these two models is able to monitor carbon monoxide concentrations in the room air. This opens up entirely new applications for Cerberus Pro. Models OOH740 and OOH740 are two new advanced fire detectors from the Siemens Building Technologies Division’s Cerberus Pro portfolio. Both detectors have two optical and two thermal sensors, allowing them to be employed as (multi-sensor) fire detectors and as heat detectors. In addition, model OOH740 is equipped with an integrated carbon monoxide sensor to provide early warning of dangerously high concentrations of this toxic gas. The most important feature of both detectors is the unique ASAtechnology which has proven itself in thousands of installations; it allows for fast and reliable fire detection in a wide range of environmental conditions.

Minimize False Alarms

ASAtechnology-based detectors split the signals they receive into their components, which are then compared in real time against predefined values using complex algorithms. These parameter sets can be precisely adjusted to the expected environmental conditions, taking into account specific local risks and possible interferences such as dust or welding fumes. Devices using ASAtechnology offer highly reliable fire detection and minimize the incidence of false alarms.

Another benefit of ASAtechnology is the ability to load multiple parameter sets into the detectors and easily switch between them. This allows customers to quickly and easily adjust the devices’ responsiveness to changing requirements. For example, the sensitivity of a detector installed in a rough industrial environment can be increased on the weekend when the production lines are down.

Since it is so easy to adapt these new Cerberus Pro models to local requirements using parameter sets, customers are able to meet all their fire safety needs with one product family. A typical example would be a university where one building houses both a cafeteria with an industrial kitchen and a data center. Although these building areas are subject to different fire risks and have completely different fire detection requirements, Cerberus Pro is able to provide optimal protection for both by loading suitable parameter sets.

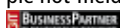
Intersec Dubai, Hall 7, Stand 325F

▶ CONTACT

Siemens Switzerland Limited, Zug, Switzerland
Tel.: +41 41 724 2424 · Fax: +41 41 723 5093
www.siemens.com/cerberus

Smoke And Heat Detector

Abus Security-Center's smoke and heat detector HSRM30000 uses a bi-sensor-processor to monitor both smoke and heat. This makes the device suitable for use in locations such as kitchens and bathrooms. The detector can monitor up to 40m² of a room. It not only monitors whether smoke is present, but also reacts to a rise in temperature in the event of a fire. This enables effective protection even from difficult-to-detect smoldering fires that produce little smoke, but all the more heat. At the same time, there is no chance of misdetection due to water vapor or temperature variations. Thanks to its bi-sensor processor technology, the system ensures reliable protection in bedrooms, children's rooms and hallways, and is also suitable for use in kitchens and bathrooms. The smoke and heat detector has a self-test function that can be used at any time to check that it is working correctly. The built-in 3-volt lithium battery has a service life of up to twelve years, making it suitable for use in private and commercial buildings. The 88dB alarm means that the detector gives a reliable warning in the event of smoke and heat. The detector is mounted without drilling using the simple hot-meld adhesive method, or using a simple drill-mounting procedure.



info.de@abus-sc.com

Card Reader Surface Mount for Drive-up Applications

Combining emergency communications equipment with access control gets easier with Talk-A-Phone's ETP-SMCR Card Reader Surface Mount Accessory. Any of the manufacturer's emergency, information or assistance phone can be mounted together with a card reader or other device to a wall, on a pole, or to a gooseneck pedestal for stand-alone applications. The unit includes a hinged panel for easy installation and an acrylic adapter to magnetically isolate the card reader for enhanced read range. The Card Reader Surface Mount Accessory is suited for drive-up or walk-up applications including building access control and garage/open parking lot entry.



www.talkaphone.com

HD Minidome Cameras

Indigovision has broadened its camera range with the launch of 1080p, 2 megapixel ONVIF-conformant HD cameras, in four variants. These are the manufacturer's first Onvif-conformant cameras, including an internal Minidome, a vandal resistant Minidome, and two Microdomes, internal or external, for smaller spaces where a more discreet camera is needed. The HD Minidome family is suited for a multicast environment, allowing an unlimited number of users to view live video on the network with reduced network bandwidth. Dual H.264 encoding allows users the flexibility of simultaneously streaming at different resolutions and frame rate, especially useful when streaming remotely as well as locally. WDR is also available, for greater clarity in areas of contrasting light levels. The Internal and Vandal Resistant Minidomes offer remote zoom and focus as an option, to simplify installation and reduce the on-going cost of ownership. Low light performance auto IR filtering is provided as standard and audio capabilities are included. The Microdomes are designed for discreet monitoring in small spaces with a built in microphone on the internal Microdome.



www.indigovision.com

Monitoring Anytime from Any Place

Milestone Systems has announced the launch of X-Protect Mobile, which is specially designed for the X-Protect VMS portfolio enabling users to effectively monitor their video from any place, anytime on an Android smartphone or tablet. The free application works seamlessly with all recent products of the product family. Via Wi-Fi, 3G or 4G connections, operators can view and play back video from cameras. With the ability to monitor installations on smartphones and tablets, the manufacturer's customers can view incidents, ensure areas are secure and take immediate action by visually verifying occurrences from any location.

www.milestonesys.com

External Detector

Optex Europe has launched the Redwall V, a re-engineered version of its series of external detection devices. It features five integrated technologies that between them result in a detector that the manufacturer's claim is the undisputed best at delivering the highest capture rates and lowest false alarm rates of any detector ever made. Ian Henderson, Export Director for Europe's Redwall division: "In terms of performance, the five technologies fuse to deliver the best-in-class in any environment, at any range. In terms of security, the detector has a host of innovative features to overcome issues with masking or tampering. And in terms of installation, everything has been engineered to make the job as quick and efficient as possible, without sacrificing accuracy." The five technologies incorporated in each unit include a Quad PIR; a thermo (i.e. temperature) sensor; light (illumination) sensor; active infrared (AIR) sensor; and the manufacturer's patented three-axis accelerometer that indicates which angle is best for detection by LED lights.



www.optex-europe.com

Access Control, Intrusion & Video Surveillance

Tyco Security Products presents a line of access control, intrusion & video surveillance solutions at Intersec in Dubai: American Dynamics victor unified video management system Version 4.1 makes it fast and easy for airports, universities, hospitals and other large sites to display, manage and prioritize video and events with its Command Centre. The system allows operators to easily manage hundreds of cameras across tens of monitors and control where event video will display. The latest addition to the Illustra series of IP cameras are Illustra 600 (720p) and 610 (1,080p) High Definition (HD) Mega-Pixel cameras, all designed to simplify installation and refine how security directors can take advantage of HD-quality video. The ability to remotely focus, zoom, name and configure the cameras enables integrators to simply mount and point the camera and then manage the rest of the installation from the security office. Three built-in mounting mechanisms, auto-focus, zoom and a compact form factor reduce the time and cost of installation. Also at Intersec: Software House – C-Cure 9000 Enterprise Access Control: It is scalable from a single site stand alone system to a multi-server distributed database security management architecture that provides local operation and reliability combined with global management and efficiency, no matter the system size. It is suited for any customer with multiple global locations that wants to consolidate and maximize the efficiency of their security operations.

Also on display in Dubai: CEM Systems latest version of AC2000 software and new innovative hardware: The intelligent security management solution is designed for small through to large, multi sites. New features increase the performance, simplicity and scope of the system, along with a number of additions that improve functionality. At Intersec, the AC2000 system will be fully integrated with American Dynamics Video Edge and victor demonstrating the systems powerful integration capabilities. Also in Dubai: DSC Impassa full-featured Wireless Alarm System; DSC TouchScreen keypads for Powerseries, and WS 4920 Wireless Repeater. gceleste@eclipsemediagroup.net

EVACUATION

Properly Managing Risk

Personal Evacuation Plans and Evacuation Trainings Help to Save Lives



Risk assessing the evacuation process for disabled employees and those with mobility problems within commercial premises requires a pro-active approach by employers. A European Directive and several local legislations clearly specifies that an employers' duty of care now extends to providing reasonable provision and adjustment for disabled members of staff.

The European Directive 89/391/EEG article 8, and 2000/78/EEG specify that those with responsibility for the management of premises are required to provide adequate means for emergency escape for all building occupants, not just their employees. A high number of employers do consider the measures necessary to evacuate people with mobility problems in the event of an emergency, however, as a result of how legislation is structured and communicated, many employers and premises managers struggle to determine the full scope of their legal obligations.

Personal Evacuation Plans for People with Disabilities

A Personal evacuation Plan, or PEP for short, for those with walking difficulties, should specify a planned route to safety and identify individuals who can provide assistance. Any training or practice needs required for such individuals should also be considered. Employers should take action to ensure that mobility-impaired or disabled workers are not exposed to any significant dangers by carrying out a full risk assessment, which should be reviewed on a regular

basis. Any ongoing risks identified in the assessment should be quickly mitigated.

The provision of facilities that aid safe evacuation should also be considered an important part of the fire risk management process. With lifts not in use during a fire, specialist evacuation chairs are an important requirement, as these allow disabled and mobility impaired occupants to safely descend staircases, and ensuring staff are trained in how to operate these is vital if they're to serve their purpose.

Ensuring a PEP is in place is paramount, but even the most comprehensive plan becomes redundant unless employers ensure people are correctly trained in how to adhere to them. Without holding regular training sessions, communication exercises and reviewing the evacuation plans of those with mobility problems, any adopted procedures become redundant, and peoples' lives are put at risk in the event of a fire.

Trainings and Drills are Life Savers

Ensuring regular drills take place, and that this incorporates training on how to use essential equipment needed during an emergency, goes hand in hand with this. A recent survey of 200 businesses who own Evac+Chairs, highlights that 40% of respondents do not incorporate them into emergency evacuation training. The results also reveal a high number of organisations that have lost their trained employee responsible for health and safety equipment. Even though 73% of respondents have now hired replacements to the post, worryingly, 40% are not yet trained in using essential equipment, such as evacuation chairs which are critical when seeking to vacate individuals from high-rise buildings (where lifts usage is not permitted). Therefore, training a team of staff, rather than just one, is undoubtedly a failsafe option.

Refuge points, or areas of comparative safety, have been incorporated into the design of many commercial buildings and are vital for those unable to use stairways unassisted as well as those assisting them, in order to safely evacuate a building. However, the most recent legislation clearly specifies that internal refuge points should only ever be seen as temporary areas where those with mobility problems can wait until they are safely evacuated. Crucially, those who stoically hold onto the concept that the Fire Services are responsible for this aspect of evacuation, should consider the possibility that they may not be able to save lives nor guarantee that they could respond within a given period of time to an emergency call-out.

Emergency Fire Action Plan

A comprehensive emergency fire action plan which specifies the evacuation procedures for everyone, including people with disabilities, should be clearly communicated. Instructions must also be provided in a number of different formats, for example, Braille, audio and large print. Incorporating other modifications such as ramps and vibration alarms (for those with hearing impairments) can also help aid safe evacuations. Disabled occupants must be regularly reminded of the specifics of their Personal Evacuation Plans. Frequent and robust training in the required procedure for all occupants helps ensure an evacuation plan achieves its full potential and serves its core purpose of helping to save lives.

▶ CONTACT

Mark Wallace

Evac+Chair Internat. Ltd., Birmingham, UK

Tel.: +44 121 7066744221 · Fax: +44 121 7066744221

www.evac-chair.co.uk

Protecting Lives and Property Worldwide ...for a Lifetime



Our products save lives and protect property around the globe from the risk of fire; a huge responsibility and one we take very seriously.

Our Product Lifetime Guarantee provides a warranty on our products, which for detectors is 10 years (CO detectors, 5 years).

The guarantee supports our recommended working life of the product and further endorses our commitment to our customers in providing them with reliable, quality fire detection products.

www.apollo-fire.co.uk



apollo
WORLD CLASS FIRE SOLUTIONS

The product lifetime guarantee is subject to terms and conditions. For further information, please refer to our current General Conditions of Sale. 'Lifetime' refers to Apollo's recommended working life for its products, being 10 years (5 years for CO detectors).

Andrea Petkovic, Germany's no. 1 tennis player from Darmstadt, is sponsored by Gerolsteiner. The unusual security solution of Gerolsteiner Brunnen includes a no. 1 in security: a Geutebruck video system.

Photo: Gerolsteiner



Known in Germany as 'Water with a star' because of its naturally sparkling properties, Gerolsteiner mineral water is a popular German premium brand product which has found a world-wide market. It is bottled at source in the Eifel area of north west Germany where the volcanic geology provides natural carbonic acid and dolomite rock which together give the water its sparkle, high mineral content and unique flavour. Gerolsteiner Brunnen's approach to security is pretty unique too as its latest security concept has dispensed with routine video recording and instead uses a Geutebruck video system to optimise and support operations.

PERIMETER PROTECTION / CCTV

Refreshing Approach

Video and Audio Communication as Aids to Process Management at Gerolsteiner Brunnen

Having thought long and hard Gerolsteiner Brunnen developed some basic principles which underlie its relationship of trust with its employees and its approach to security. (1) The company's aim is profitable growth and safe and secure processes are fundamental to that. (2) Its focus is on supporting processes and organizing them to be safe and secure. (3) Every worker and visitor, whether from Gerolsteiner or an outside company, should feel comfortable at Gerolsteiner and the rules which are applied should assist in shaping this togetherness.

What Do We Really Need?

The need to secure new buildings and operations and to include new technology brought the realisation that the company's old video system was no longer up to the job. In considering how to replace it the central question was "What do we really need: video monitoring or video-voice communication?" Either way it was felt that the focus had to be on process management and the approach had to be positive to reflect the company philosophy.

Surveillance and trust are not easy bedfellows, and it was considered crucial that everyone in the company should feel comfortable, because people work better when they are relaxed. So rather than applying checks and limitations, people at Gerolsteiner are enabled with user rights. These rights have a horizontal rather than a vertical orientation. Rights put employees in a position to express their responsibility, and as a result the access control system is seen as a system of rights rather than limitations.

Instead of thinking about controlling in a negative sense, Gerolsteiner's approach was to work out how a new video system might help control room staff to do their jobs, for example when a vehicle enters the site, or when someone enters the factory. These are the natural starting points for many processes and the right moment to give the person guidance or directions and to tell them about the house rules.

As a result, the Geutebruck video system provides pictures while the integrated voice communication system provides sound: both are triggered by automatic switching. When someone

requests entry into the factory site control room staff need to respond with a suitable greeting, provide appropriate assistance and hence (importantly) make a good first impression.

When the visitor presses the button on the intercom at the entrance the video picture and the audio communication are activated simultaneously. Lights indicate this to the visitor and the guard in the control room sees the visitor nice and clearly on the screen, even if it is dark outside. If the operator knows the visitor, he or she can immediately open the door remotely using the same system console as the video system.

The control room is manned round the clock with two staff on each shift. It has all the latest technology. The Geutebruck video system is their 'remote eye', which is switched manually when required but otherwise works automatically.

Being located immediately next to the site entrance, the control room is the obvious point of contact for visitors and business callers. Customers, or their carriers arrive unannounced all round the clock to collect shipments of bottles. So this is where order processing starts and

ends. For legal as well as security reasons this involves the accurate and unambiguous recording of vehicle registration numbers. Geutebruck's solution currently provides a crystal clear picture so the number can be entered manually in the SAP order processing screen. Future plans foresee the introduction of automatic number plate recognition and the automatic recording of data directly into the order processing system.

Once the brief 10-second registration process is complete, the driver receives an entry number with which to register at the loading bay. As the relevant data arrives there before him, his arrival is anticipated and loading can begin immediately.

Many other operational processes also benefit from the support provided by live pictures and voice communication. And of course when parts of the plant are not operating, at night or during holidays, the system's video alarm features come into play to detect intruders and display alarm reports and live pictures. These alarm pictures are stored temporarily but then automatically deleted after a set time.

No Looking Back

"Why have permanent recording of video? How would looking back help?" questions Heinz Lorse, the company security manager. "Here there is no long-term storage of data so recording capacity is not needed. If a standard process is carried out and completed in compliance with the rules then it is totally unnecessary to archive pictures of it." At first glance this may seem bizarre. But, given that the company philosophy is not to be suspicious of people, it is entirely logical. Despite the strict regulatory framework which necessarily applies in all foodstuff manufacturing, for authorized people entering the Gerolsteiner premises the process is very easy. Precisely because it works on the basis of shared values and trust. Given that this is what many visitors and business partners find attractive, they respect it, support it and behave accordingly. As a consequence not only does the works council have no issues with data protection but criminal acts are the absolute exception.

Developing a Technical Solution

Gerolsteiner's needs are met by an integrated all-in-one solution with video from Geutebruck, voice communication from Schneider Intercom and access control from Kaba. These systems were selected by a special project group consisting of representatives from the company's electrical systems department, its IT department and the company security staff. Under the guidance of Bonn-based consultants VzM Beratung GmbH, they visited other users to see a variety of systems in operation, and worked together to develop a full functional specification in preparation for the tendering process.

The Geutebruck hybrid video solution which was subsequently installed by TFA GmbH, Kreuzau-Stockheim differs significantly from the other pure IP designs proposed. Its advantages include the Geutebruck video server's system architecture together with its open interfaces which offer easy integration with the Schneider Intercom and Kaba equipment. In addition the system includes the potential to link a site 4 kilometres away with two-core cable and switching 25 fps live video.

Staff Solution

Gerolsteiner management report that the installed video solution works reliably and failure-free. The company is convinced that installation and commissioning was made easier because the consultant, installer and client all worked co-operatively together on designing the system and determining its components. It certainly seems that control room staff who have been actively involved from the outset, are very comfortable with the result. As Mr Krämer, a security guard commented, "We wouldn't now do our work any other way!" — In fact perhaps the finished system would be better described as a 'staff solution' rather than a 'technical solution'!

▶ CONTACT

Carmen Lahr
 Geutebruck GmbH, Windhagen, Germany
 Tel.: +49 2645 137 350 · Fax: +49 2645 137 239
 info@geutebrueck.com · www.geutebrueck.com



The GeViScope Speed View workstation is part of a solution designed to make recording irrelevant by promoting immediate, positive actions.

Photo: Astrid Weiss, TextPresseMarketing



Gerolsteiner uses Argus, Geutebruck's high speed pan & tilt camera to monitor the perimeter fence and the turnstile entrance as well as the public helicopter pad.

Photo: Astrid Weiss, TextPresseMarketing



The Gerolsteiner philosophy replaces the usual focus on plant security with one on process control and optimisation.

Photo: Gerolsteiner

PERIMETER PROTECTION

Alarming Integration

The Sicurit View of the Challenges for 2012



Sebastiano Vento, Export Sales Manager at Sicurit, the Italian security equipment manufacturer, was interviewed by Matthias Eler of GIT SECURITY and asked about his outlook for 2012. His views provide an insight into the integration challenges that lay ahead.

GIT SECURITY: Sebastiano, there are three parameters that are important for perimeter protection systems: the probability of detection, the nuisance alarm rate and the false alarm rate. Which trends do you see in 2012 that will help in balancing these rates with new technologies?

Sebastiano Vento: I don't think brand new technologies in perimeter protection systems will appear in 2012. Nowadays the main challenge is to improve our own already proven technologies through more sophisticated detection algorithms, in order to reduce the false/nuisance alarm rates (we don't make a distinction between the two as both are unwanted alarms that have to be properly filtered). Actually, Sicurit has been meeting this challenge for almost 15 years

with its Dual Technology Barrier called Absolute, and now, with the recent release of the digital version Absolute Plus-RS in which new patented bi-directional IR beams have been integrated, we have achieved really impressive results.

Looking at the current perimeter protection market development: what market requirements do you see, what do the customers want?

Sebastiano Vento: Just two words can summarize what customers want: Plug & Play. This concept, acquired by the security industry thanks to the fast growth of IP systems, should form the basis of new product developments for those companies that aim to be a part of large and complex projects. Sicurit has been following this concept for many years, delivering pre-assembled and sometimes pre-configured solutions to its partners worldwide, focusing today on system set-up and developing more intuitive configuration software.

What will be the largest technological challenge in the perimeter protection market in 2012?

Sebastiano Vento: As I explained above, plug & play solutions are the main challenge. The development of special interfaces to link together the

technologies of different manufacturers is one important aspect of this challenge and Sicurit, thanks to the Hyperpower security integrated platform and its IP based interfaces, has made a big step forward in meeting this market demand.

What new solutions can we expect in 2012 from Sicurit Alarmitalia?

Sebastiano Vento: Sicurit is largely investing in the Hyperpower security integrated platform, and continues to develop new interfaces for horizontal and vertical integration. The latest development is the CMH9000M, a device for linking Hyperpower into the Geutebreuck Gevisoft central CCTV management software through a Getas interface.

Could you give us an example of important applications where Sicurit systems are installed?

Sebastiano Vento: We are proud to be a main supplier to highly sensitive areas, such as are found in the energy and transportation sectors. Our products are installed in many governmental, industrial and military applications, and our main reference is surely the Israeli Parliament (The Knesset), where Sicurit product's main challenge has been the competition against local but internationally well known manufacturers in terms of system reliability. After the execution of some hard tests, Sicurit Dual Technology Absolute Plus was chosen for protection of the entire Parliament.

You plan to expand your company and to grow – what news do you have for our readers?

Sebastiano Vento: Our development program, despite the global economical crisis, will not slow down in 2012 but on the contrary is forecasting new employment to enlarge our R&D department. This will enable to announce new product releases us in the third quarter of 2012 that will be displayed at Security Essen in Germany. New ongoing partnerships will then allow Sicurit to penetrate the major markets with more emphasis and more qualified partners. 2012 will be the real challenge and will decide who will be the main players in the next decade, and Sicurit wants to be one of those.

► CONTACT

Sebastiano Vento

Sicurit Alarmitalia Spa, Milano, Italy

Tel.: +39 0238070317 · Fax: +39 0238070317

sebastiano.vento@sicurit.it · www.sicurit.it

CCTV

Turn the Night into Day

LED Illuminators Expand the Scope of Video Cameras at Low Lighting Conditions



There are several methods to enable the use of video surveillance at night or at low light conditions. The use of thermal cameras is one option, modern IP cameras with more and more light sensitive sensors are another. Nevertheless, if it gets too dark or if you want to get clear video images at farer distances, there is no way around illuminators.

Light sources do play an important role for the quality of a video images. The problem is that regular halogen illuminators that are in use to light up areas are not reliable enough for CCTV applications because they are rather maintenance-demanding and most of them allow only about 1,000 hours operating time. Videotec has now designed a new generation of illuminators, that provide high reliability and enable excellent image quality for Standard Definition and Megapixel cameras, combined with high reliability.

The light produced by the Geko illuminator brightens the entire scene evenly, eliminating hotspots and underexposure, for clear nighttime images and secure surveillance of an area. The high efficiency heat sink body ensures maximum LED durability and protection against over-temperatures, whereas the front glass, made of special technopolymer, provides high IR transmittance. Geko illuminators ensure a long LED

lifetime, high efficiency and zero maintenance. They are also protected against electrostatic and atmospheric discharges (lightning). These illuminators incorporate a circuit that allows them to be powered directly from a 12 Vdc/24 Vac or 24 Vdc supply.

Performance and Durability

LED light is truly a robust light: There are no gases, no filaments and no moving parts. It takes 50 incandescent light bulbs or 8 fluorescent lamps to equal the life span of 1 LED light bulb. Moreover the LED illuminators can operate in an extremely varied temperature range, as low as -50 °C up to 60 °C and still maintain their long term reliability. The Gekos provide clear night vision up to 140 m, in an indoor or outdoor environment. The range includes models with 850 nm and 940 nm wavelength with angles of 10°, 30° or 60°.

High Energy Efficiency Leads to Lower Costs

The autumn and winter months is the time period were all security professionals have not only to consider improving the performance of CCTV systems at night, but are also forced to have a look at their energy costs. During this period CCTV lighting is required to operate for longer

periods of time. A system like the Videotec Geko helps to limit the overall costs of video surveillance. It consumes 6–12 W to operate, while conventional high efficiency lighting consume 50–100 W. An advantage that pays off: Geko illuminators are using only 12 % of the electrical power in standard usage.

Another aspect to consider is that with Videotec's advanced manufacturing capability and the long life span, the relative power used for their production is reduced and therefore reduces the pollution from energy production. With the the system also lasting 50 times longer than normal bulbs it reduces the quantity of waste ending up in the land-fill sites. Moreover they dramatically reduce maintenance costs. With an average life expectancy of 11 years (less than 6 months for normal bulbs), they make the total savings on maintenance and installation a very attractive option.

▶ CONTACT

Videotec SpA, Schio, Italy
Tel.: +39 0445 697411
info@videotec.com · www.videotec.com

ASSA ABLOY



ACCESS CONTROL

More Doors to Open

Enlarging an Access Control System with Wireless

The task of planning room usage within a building or factory includes forming secure areas for IT, development departments, archives and other specific industry-related areas. These often change over time and may exceed the capacity of the originally installed access control system. GIT SECURITY spoke with Chris Bone, Vice President Access Control EMEA Assa Abloy, about one of the expansion options.

GIT SECURITY: Mr. Bone, Assa Abloy is just about to present a number of new features for "Aperio", a technology enabling mechanical locks to be wirelessly linked to access control systems that usually only control a selected number of important doors. Aperio has been around for quite a while now, but could you give us a brief introduction for those of our readers who are not yet familiar with it?

Chris Bone: It is true that Aperio has been around for some time, but the product range has recently been expanded dramatically to address a far broader market, something we are very

excited about. In brief, the solution is a broad range of either on-line or off-line wireless "electronic cylinder, escutcheon and lock" products designed for integration into third party access control systems. The market it addresses is for simple, cost-effective expansion of new or existing access control systems.

What does it technically take to install such a system in a building?

Chris Bone: It takes similar skills as for traditional access control systems, but it is far quicker and cheaper as there is no need for wiring at the door or down the wall.

What is the difference between your system and those of your competitors on the market?

Chris Bone: There are two main differences. Firstly we have leveraged the global presence and capabilities of Assa Abloy to offer the broadest range of products in the market. Secondly as Aperio is not a stand-alone product the customers get the benefit of integration into their new or existing access control system without the need to manage and monitor separate systems.

What made the development of such a system so difficult?

Chris Bone: Two main issues. Developing the complex electromechanical ecosystem and balancing the needs of low power consumption against functionality whilst ensuring the security of the system is maintained and secondly ensur-

ing there is an Aperio solution available in the large variety of global hardware profiles our customers would expect. This has all taken time and considerable effort but we have achieved this and are now pushing forward with even more solutions.

One of the new additions to Aperio is a hub covering eight doors at a time, instead of having one hub for each door. What other features are there?

Chris Bone: That is a big question as new features and products are being added on an almost weekly basis now. Just a few recent examples: in addition to the new hub covering up to eight doors we have also expanded the wireless range to 25 meters for a typical office environment. We recently released a new Wiegand hub which allows anyone experienced with access control to install Aperio into an access control system without the need to do integration development work. We also have a new IP54 and security rated escutcheon solution, and we have added new RFID technologies to the range.

Who are your direct customers? Are they rather system integrators or OEMs? And could you tell us what advantages both they and their customers have when they work with it?

Chris Bone: Our direct customers are a combination of both OEM's and their own SI channels. As Aperio is not a standalone system the advantage for both OEM's and SI's and most importantly their end user customers is twofold; firstly,

they have an efficient technology that allows them to cost effectively add additional access control doors to their facility without the need to change or add cards; secondly, they retain the familiar power and features of their existing access control central software so they have a single system for card management, reporting and integration into additional third party items such as CCTV or fire. Aperio is developed to be part and complement the existing EAC solution of the OEM.

The system is distributed world-wide under the Assa Abloy brand name – which is not typical for your Company with it's huge amount of brands. What is the reason for choosing this strategy?

Chris Bone: Aperio is what we refer to as a group technology brand in Assa Abloy, and whilst globally there are many different hardware profiles that it is included in, for the customers the functionality and features remain generally the same – hence the strategy of placing the Aperio technology under the globally recognized brand of Assa Abloy.

How do you deal with the problem of every country or region having their own cylinder standards?

Chris Bone: This is one of the core strengths of Assa Abloy. We are able to leverage the local manufacturing and development capabilities to

ensure we can supply Aperio in almost every cylinder and other hardware profile available globally. This is a real benefit for our customers as they have the assurance of choosing one solution that will work for them anywhere and they can leave the issue of local standards to us.

The system can handle Mifare, and HID's Iclass – what about other card technologies?

Chris Bone: We have recently also added Mifare Classic and Plus and Mifare Desfire and in the very near future we will be adding other smart card technologies such as Picopass, Rijkspas and Legic Advant. And one of the most exciting developments planned for release in early 2012 is 125 KHz (Low Frequency) for our on-line Aperio solution which will allow thousands of customers who have invested in 125 KHz to add Aperio devices to their facilities without having to replace expensive access control cards and readers or to have separate systems.

What market volume are we talking about – do you have estimates of the world-wide demand?

Chris Bone: One could answer this by saying how long is a piece of string as this is impossible to estimate with real accuracy. However our own estimates are that less than 5% of doors in a commercial building typically have wired access control installed. Our plan with Aperio is to provide an economic and wireless solution to

expand this in addition to wired solutions of another 20%, hence we are ultimately expecting a market of millions of doors. But we realize of course that building market confidence and demand will take time so we anticipate a short to medium term demand in the hundreds of thousands of units globally.

What are your plans for 2012 and beyond regarding Aperio?

Chris Bone: The plans for Aperio are very busy in the coming years. We will continue to grow and expand the product range by adding new technologies as well as new hardware profiles and architectural ranges and some innovative new locking solutions. In addition we recognize that supporting our customers is critical to success so we will also continue to invest in new sales and marketing support as well as training and technical support. All in all, we feel sure that we will be bringing many exciting new developments to the market with Aperio in 2012 and beyond.

▶ CONTACT

Thomas Schulz
 Assa Abloy EMEA
 Tel.: +49 30 8106 2970
 thomas.schulz@assaabloy.de
 www.assaabloy.com/aperio

License Plate Recognition for Vehicle Access Control



Nedap AVI expands its product line of vehicle identification systems with the license plate reader ANPR Access. Specifically designed for vehicle access applications, it is easy to implement in existing access control systems, because the software supports Wiegand, RS422, RS485 and IP. In addition to its transponder based Microwave and UHF technologies, with ANPR Access Nedap offers a robust and user-friendly LPR system for long range identification of vehicles. The camera is designed to act as a reader in several vehicle access control situations. The optional Wiegand Interface Module (WIM) converts

license plate information into a Wiegand number, which makes it easy to implement it in existing access control systems using a Wiegand interface. ANPR Access is also able to send full license plate identifier strings over an IP or serial connection. The housing is designed for easy mounting on walls and poles and the camera is suitable for all type of weather conditions.

www.nedapavi.com

Enhanced Detectors

Bosch Security Systems has introduced enhancements to the DS150i and DS160 Request-to-exit Detectors. Improvements in the design of the products have resulted in a 40% increase in reliability – helping to reduce service calls once the detectors are installed. The detectors also include built-in spike protection, which eliminates the need to add a separate module to prevent significant voltage spikes on the relay contact. This feature, along with the use of dipswitches that make configuration easier and a new auto-sensing 12 to 24 volt voltage regulator, reduces installation complexity – improving the efficiency of technicians in the field. Sound output has also been increased through the implementation of a more effective sounder and circuit design. This allows users to increase the volume by more than 10% over previous models to fit their individual needs and preferences. The devices detect motion in their coverage area and signal an access control system or door control device. They can be used with single or double doors and are wall or ceiling mountable.



www.boschsecurity.com

ACCESS CONTROL

Connections in All Directions

The Phased Introduction of New Security and Time Recording Systems



For several months, detailed and meticulous planning, testing and optimizing has been going on almost round the clock.

As a result, Fraport has now been able to replace the Credential Management System in use at Frankfurt Airport with a new system from primion Technology.

Fraport is one of the leading international companies in the airport business and, in addition to covering the full range of airport services, it is active in airport retailing and real-estate development. As a full-service provider in the field of airport management, operations run on four continents through investments and subsidiaries. Fraport is the owner and operator of Frankfurt Airport, one of the world's most important air transportation hubs. As part of a public tender, the company awarded a contract to primion

at the end of 2008 to supply a new integrated network system consisting of credential management, access control, time recording and gate access. Currently, new airport ID badges for some 80,000 people are being created and exchanged for the existing ones. To this can be added around a further 700,000 visitor badges per year.

Talk to Each Other

The first phase of the project was to create a comprehensive concept for the development and migration of the existing, highly complex credential management system in partnership with the committed and motivated members of the Fraport project team. Particular attention had to be given to the multiplicity of interfaces that the credential management system has to serve. This also included interfaces to the existing access control system, which has to continue to be supplied with credential data until its replacement by the prime WebSystems software from primion.

From the start, the new system administers some 154,000 permanent credentials, 268,000 persons as well as 16,500 external company and

organization units, together with their historical data. Within just the first two days, 3,500 visitor badges were created and issued.

The primary goal for Fraport was to bring the IT systems up to the latest standards in terms of security. As well as requiring a renewal of the central management systems, this also called for the replacement of all the door and gate access control readers as well as the time recording terminals, across the complete airport site. Once all the card readers have been upgraded to units with the new, high-security RFID technology, the previously used hybrid-cards with magnetic stripes will be replaced by the more economical, purely RFID cards.

Time for a Change

The successful introduction of the central credential management software provides the basis for the next phase of this major project: the introduction of time recording, access control and the gate access system. A further milestone should be reached in the near future when new time recording terminals employing the same proximity reading technology will be installed and the system taken into service. Shortly after that, the



new access control system should also be rolled out. Swapping out the technology in around 900 switching cabinets and over 700 different rooms will be a complex task for all involved.

The final stage of the current project will be to replace the previous Multi-Access Control System (MACS), which currently controls processes at the gates, by a new Gate Access System (GAS) during a further roll-out phase. This represents a major challenge, both in terms of taking over the complex body of rules and regulations that handles gate control and in the replacement of all the terminal devices at the gates. Over 600 Gate Management Terminals (GMT) have to be replaced in the most security-critical areas while the system continues to operate. These measures mean a further optimization of the professional security technology deployed at Frankfurt Airport.

▶ CONTACT

Susanne Christmann

primion Technology AG, Stetten, Germany
Tel.: +49 7573 952 546 · Fax: +49 7573 92034
christmann@primion.de · www.primion.de

Encoder: High-Quality H.264

Bosch's VIP-X1 XF-E is the latest addition to the VIP family of single channel H.264 Encoders. This version of the VIP X1 XF delivers the same encoding functionality as its big brother but does not include Intelligent Video Analytics (IVA) capability. This makes it a cost-effective solution for upgrading analog systems or adding IP functionality to analog cameras in areas where great image quality yet no automated detection is needed, for example reception desks or hotel lobbies. Delivering two independent high-quality, real-time H.264 video streams per channel, the VIP-X1 XF-E Encoder allows viewing and recording at two different quality levels. Its H.264 Main Profile encoding also delivers DVD image quality video (4CIF) at the same bandwidth as MPEG-4 half resolution video (2CIF). Furthermore the manufacturer's low latency implementation of main profile technology offers all the compression benefits for live video, without sacrificing image quality.



www.boschsecurity.com

Command And Control

Genetec has introduced the newest version of Plan Manager, an interactive map-based command and control feature of its unified security platform, Security Center. It is supported by the latest version of Security Center 5 and comes with a variety of new improvements including the addition of an advanced 3D map technology called Immersive Maps. The feature helps improve operator efficiency when monitoring and handling real-time events and changes in the status of the security system. This is achieved via an intuitive interface based on a dynamic graphical representation of the system, visual cues to identify changes to the security environment, single-click actions available within a map, and a higher level of automation. Some key enhancements include viewing video directly within a map, visually tracking a PTZ camera's field of view, automatically centering maps on active alarms, quick searches for entities, arming and disarming zones. Access control functionalities include tracking door status, locking and unlock doors, and monitoring designated access control areas directly from the map.

www.genetec.com

Video Wall Management

Sicura Systems are supplying their intelligent video and data management suite in combination with a fully redundant video wall to a Network Rail depot in Reading, Berkshire, England. The installation is facilitating wide-area surveillance of both unauthorized and legitimate track-based movements from a series of dual optical/thermal cameras on two-mile stretches either side of the depot, the camera-based hardware being compliant with trackside EMC standards. IP streams from the analogue cameras are being generated using blade encoders. The manufacturer's goal throughout the project has been to optimize the intelligence of management views. Network Rail staff are monitoring the site using Digiwall which is an IP-based display solution for control rooms at critical infrastructure sites.



www.sicurasystems.com

PoE Mini-Switches Certified

American Fibertek announced that its Series of 3-port and 4-port PoE miniswitches (also known as Fiber Optic PoE Midspan devices) have been certified by Axis for use with the company's Q60XX-e Series (Q6032-e, Q6034-e, and Q6035-e) outdoor PTZ cameras. The outdoor PTZ cameras include heaters and blowers which require 60 watts of power. To facilitate high powered PoE operation in harsh conditions, the series can source up to 60 watts of power to Axis Q60XX-e Series cameras over an operating temperature range of -40 °C to +75 °C. This power requirement is higher than currently supported by the IEEE 802.3af (15 watt) or 802.3at (30 watt) standards. Axis requested AFI to supply the high powered PoE mini-switches for testing at their lab in Boston. The certification testing consisted of operating the AFI devices to power Axis Q60XX-e Series cameras in low temperatures for extended periods of time. Operating at low temperature triggered the camera's heater and blower units which require 60 watts of power to operate the camera system.

www.americanfibertek.com

SECURITY FOR
PUBLIC TRANSPORTATION

Mind the Gap!

Providing End-To-End
Security on Public
Transportation Systems

One of the most well-known public announcements worldwide urges passengers on the London Underground to watch out for the gap between the rail car and the platform. The same warning though must be heeded by security chiefs responsible for the various types of public transport. With 10 % of the inland traveling public in Europe using buses and coaches and another 7.5 % using railways, trams and metro systems – the others go by car – the transport authority has an obvious duty to ensure their security end-to-end, with no gaps. We take a look here at some of the methods available.



No matter on or through which medium people travel – be it air, sea or land – there are some common factors in the structure of their journey. Firstly, they always come together at a boarding point. Secondly, most if not all of them are sitting down in a vehicle during the trip. Finally, they embark together at a terminal of some sort. During this time, concentrated together, it is not uncommon for disputes to break out with more or less severe consequences. Add some premeditated petty crime, violence, vandalism or, in the worst case, terrorism into the mix and it becomes essential for a transport authority to be able to spot trouble quickly and to intervene with suitable resources.

There is no simple patent solution to passenger security; as with any static security system, it is the sum of the individual elements that provide the total security level and, as a whole, reduce the opportunities for misdemeanor to a minimum. The time spent on transport authority property can be broken down into three phases; the arrival and boarding, the journey itself and the disembarkation. The first and third phases take place in terminals or at stops along the way and are similar, as would be a change of transport medium or connection in a two or three-leg journey. So really there are only two scenarios to consider when providing security throughout the whole trip.

Terminal Education

A mixture of both passive decorative and active technological security aspects will complement

each other in preventing trouble. Many years of working on mass transit systems has shown L.A.-based urban planner and local transit advocate Christopher MacKechnie that lighting must come high on the list of passive measures and says "While most new rail stations have excellent lighting, older stations and especially bus stops are often dimly lit, uninviting places at night. If connecting to the electrical grid is not possible, then transit agencies can utilize many varieties of solar power lighting to light both transit shelters or just the area around the bus stop itself". Dark, murky corners are an ideal place to wait for an opportunity or to disappear after committing a crime. Brightly lit concourses or bus stops in contrast not only provide no place to hide but they also have the beneficial side-effect of improving the general public opinion of a transit system. Open spaces that are visible from all directions deter attackers, so removing unnecessary hoarding along the access routes will passively increase the feeling of well-being amongst travelers, particularly for women traveling late at night.

Unfortunately, some people behave in a way that invites crime and education programs can help to minimize the number of such 'accidents waiting to happen'. For example, posters in vehicles can recommend simple measures to improve personal safety, such as

- using safe and well-frequented routes to get to boarding points
- if necessary, walking a bit further on lit streets rather than taking a dark short-cut

- traveling together with others, not isolated
- not using personal electronics while traveling
 - these items are especially attractive for thieves.

Uniform Appearance

Regular reviews of security measures together with the local Police should already be in the calendar. Whether the police themselves implement patrols or if these are provided by a private security company is a local decision supported by levels of budget and resource availability. Whichever force is chosen, their visibility on patrol gives a positive reassuring effect to almost all travelers, as long as they're not kitted out like commandos. The small number of others may consider their human rights infringed by a police presence and this highlights the important aspect of the perceived purpose of security forces.

As Rachel Worsley found out while compiling her "Rail Passenger Security Screening" report for the British Department of Transport, despite the attacks of recent years, most travelers still consider the prime purpose of body searches to be for the general removal of individual weapons from circulation and not as counter-terrorist measures. Thankfully, our four-legged friends can help us to reduce any negative emotions of being frisked. They are generally very well accepted and, as we know, highly efficient at sniffing out narcotics and explosives. Dog patrols are not a complete solution in themselves but provide a visible deterrent factor, ably complement other technological measures and provide some unique capabilities in the total security mix.

Background Checks

The subject of scanning passengers and their luggage for contraband and dangerous substances was presented in a two-part article in issues 1 and 2 of GIT SECURITY in 2011. While used to some extent with cruise ships and indeed being mandatory for air passengers, it is rarely used for other terrestrial travelers. The decision to introduce such procedures on a mass transit system would meet with howls of protest both from operators and passengers unless, as suggested by a passenger recently interviewed at a busy railway station, the equipment could be built into platform entrances or directly in rail car doorways. Here is perhaps some motivation for manufacturers to miniaturize the next generation of their equipment.

The question then arises of exactly who should be scanned; everyone, random travelers or just those identified as a potential risk. Ferry companies operating internationally, especially those carrying cars, as well as national railway systems often sell their tickets in advance of the travel date. Where legally permitted, this gives a window of opportunity to carry out some passenger manifest and passenger name record (PNR) screening against established databases such as the US APIS and to take a significant step in targeted crime prevention.

Voice Comms

Radio and data communications and video surveillance provide the active security elements once passengers are on the move. Private radio networks are already in widespread use throughout transit systems. These have been developed to comply with the local licensing and performance requirements as well as the topology and traffic expectations. Legacy analog systems, while robust, have largely been replaced with more capable digital trunked communications systems that incorporate advanced signaling and data transfer features. TETRA (TERrestrial Trunked RAdio) coverage is extending rapidly in networks in over 120 countries around the world and has the significant advantage of being fully compatible and interoperable with the same radio system standard used by the emergency services in many countries. This ensures a uniform knowledge level during emergency situations and disasters and the rapid flow of information to the right people.

Topological hindrances no longer prevent the construction of a totally reliable radio communications network. The dynamic frequency assignment and repeater architecture utilized in well-planned TETRA systems assures interference-free channels that work equally well in built-up areas, wide open spaces and, if necessary, also tunnels. Since its inception in the early 90s, both small and large suppliers of hardware and software have established themselves, as well as a number of application developers that provide tailored solutions to meet special needs. Sepura from the UK as well as other suppliers listed at the end of this article manufacture fixed and mobile transceivers that come in all shapes and sizes, ruggedized, waterproofed and otherwise adapted to the environment in which they will be expected to perform.

Seeing Is Believing

Discreet but pro-active video surveillance can be applied not only to deal with trouble but also to anticipate it. Mobile technology has become both compact and affordable enough nowadays to be installed right along the passenger's route. Axis, for example, provides the M3113-R and 3114-R cameras that blend neatly into the vehicle's interior. Out on the platform, cameras are exposed to all the extremes that Mother Nature can throw at them as well as stones thrown by vandals. Weatherproof and vandal-resistant housings and day/night operation are therefore essential, for example using the high-end DDF-4010HDV-WM from Dallmeier. This IP network camera provides full HD as well as a raft of other useful features including bidirectional audio.

While getting the images to the driver of a vehicle or train, the captain of a ship or an aircraft pilot on board is easily achieved, relaying these back to a central security center – back-hauling – has not been, depending entirely upon the type of transport and the distances involved. Technology comes to the rescue nowadays in the

Switches for Rugged Mobile Video System



Industrial Ethernet PES42P switches from Garrettcom Europe have been selected to network the ruggedized mobile video surveillance systems produced by Doo Technologies – specialists in real time, total capture 360 degree video provided to Defence, Homeland Security, Public Safety, Law Enforcement and Commercial markets. The surveillance vehicles can be configured with short, medium and long range PTZ camera systems with both day and night mode, each of the camera systems can be operated and viewed independently by operators within the vehicle using its multifunctional display and control systems. Real time video communication from vehicle to vehicle and vehicle to command can be transmitted using multiple transmission protocols such as Microwave, Satellite, 3G, Wimax, and Wifi delivering the 360 degree video. The video can then be remotely viewed and navigated by individual operators and integrated with data and maps to create superior visual intelligence and saving crucial time in critical decision making situations. www.garrettcom.com

Suprema Continues Global Partner Program

Suprema held its second Global Partner Program in Seoul, Korea. With 51 executive-level participants from 32 countries, the program covered new product introduction, marketing orientation, R&D roadmap and best practice presentations from partner companies. "While previous year's program was to give technical training and outlook for our partner company's engineers, this year, we are focusing more on sales & marketing aspect," said Young S. Moon, Vice President of Sales & Marketing. "With the program, we aim to improve our partners' strategic insight on Suprema products and solutions, and wish to develop market-oriented business strategies with each participating companies." The Company has a plan to extend its Global Partnership Program as a tool for distributor training and developing joint marketing strategies with its partners. Founded in 2000, the Company now has more than 900 customers from 100 countries worldwide. andyahn@supremainc.com

Suppliers

Screening Services

Aviation Technologies

www.checktsa.com · +4 570 457 4147

Unisys

www.unisys.com · +1 585 742 6780

Lufthansa Systems

www.lhsystems.com · +49 69 69690000

Mobile Data

DResearch Fahrzeugelektronik

www.dresearch.de · +49 30 515 9320

Mesh Dynamics

+1 408 373 7700

Mobile Video Systems

www.mobilevideosystems.net · +1 888 721 5777

Proxim Wireless

www.proxim.com · +33 141 460340

Utility

www.utility.com · +1 404 816 0300

Video Cameras

Alcatel-Lucent

www.alcatel-lucent.com · +33 1 4076 1010

Arecont Vision

www.arecontvision.com · +1 818 937 0700

Avigilon

www.avigilon.com · +1 604 629 5182

Axis

www.axis.com · +46 46 272 1800

Bosch

www.boschsecurity.com · +49 89 62900

Dallmeier

www.dallmeier-electronic.com · +49 941 87000

Honeywell Security

www.honeywell.com/video · +44 1344 656 989

Samsung

www.samsungsecurity.com · +44 1932 455 308

Tetra Radios

Cassidian (EADS)

www.cassidian.com · +49 89 6070

Sepura

www.seapura.com · +44 122 387 6000

RAD Data

www.rad-data.de · +49 89 665 9270

Nielson Communications

www.nielsoncom.com · +1 920 494 1828

Creowave

www.creowave.com · +358 10 832 6300

See also the International Tetra Association

www.tetra-association.com, +44 191 231 4328

form of mobile broadband communication links meshed with a new or existing private network infrastructure.

Terrestrial frequencies in the 2.4Ghz and 5GHz bands are available to transmit real-time video directly over 'short' distances up to 1/4 mile or so. This is useful for transport systems (buses, trams, underground trains etc.) in terminals or at certain hotspots within a city, and dedicated receivers that feed the acquired signal into a network installed right along a vehicle's route are now affordable. Another commonly used solution is to use either private or public cellular networks to return the images to a central operations center, using the same technology that TV news-gathering crews employ. Concentrators on board a vehicle take the video feeds from multiple IP cameras and compress these into one data stream that is transmitted over one or more cellular networks. More advanced models also add GPS and vehicle operational and/or diagnostics data, and provide an emergency alert function.

Video On Demand

As Michael Fickes, an American journalist, rightly points out after researching mass transit video solutions, taking this amount of data continually from all the vehicles or trains on a typical transit system would quickly swamp both the network and central storage capacity. Therefore a mixture of both optional driver-initiated action and automatic algorithms such as facial recognition or boundary detection software can deliver a high level of crime prevention while sifting out the otherwise 'useless' video sequences that only need to be archived and not viewed in real time. Where only near real-time coverage is necessary or where network coverage is not reliable, an on-board concentrator usually buffers accumulated images and/or data in a store-and-forward mode, waiting until a strong radio link is established before downloading. This data is commonly stored on a device with a conventional but fragile hard disk. High-capacity solid state memory is starting to be used now in mobile devices and provides robust archiving of important video material. Philip McDouall, director of transportation product marketing with March Networks in Ottawa, Quebec is keeping a close eye on the price of this and concludes "Like all technology, prices are falling for solid state memory, and we believe it will be affordable within a few years."

Innovative solutions have already been developed that can transfer live video images from within transport system vehicles directly to nearby police cars. As Michael Dillon, vice president of business development with California-based Firetide explains, "When the police car comes within range, wireless technology on the bus forms a network with wireless technology in the police car. The officers in the car can access cameras inside the bus and see what is happening." Police working together with the Massa-

chusetts Bay Transportation Authority then have a much better idea of any potentially dangerous situation that they are facing. Of course, marine security is a lot easier because a ship has 24/7 unimpeded access to satellites. Many service providers now offer low-bandwidth security solutions based on satellite technology, and the same operating principle can be applied equally well to both land-based and marine transport systems.

On The Quiet

Silent alarms and panic buttons are often implemented in household or commercial burglar alarms, and these have the wonderful advantage of helping to catch thieves in the act, ultimately removing them from circulation. Likewise with transport systems; it can be advantageous not to alert the troublemaker to their impending arrest, enabling security staff to get closer to the incident before the troublemaker becomes aware of them.

The frightening rise of piracy, kidnap for ransom and extortion off the coast of east Africa has given rise to a number of high-tech solutions that, while not necessarily cheap in themselves, save the owners of vessels significant costs in compensation, insurance premiums and – in the worst possible scenario – possibly having to order a new ship. For example, the equivalent of the old train driver's 'dead-man's handle' will ensure that all is shipshape and in good order. Failure to report on time, combined with unscheduled or out-of-bounds GPS tracking, can rapidly provide good reason to assume that one of the over 800 large ferry vessels operating in and around Europe has been taken over by unauthorized persons, and appropriate action can be initiated well before the hijackers expect it.

System Security

Finally a word about the security of the system itself. As soon as two or more devices are connected, the ports used become vulnerable for misuse. We must not make the mistake of concentrating so hard on providing the ultimate security for our passengers and forgetting our own. In these days of IP transmission, unused ports on every device must be disabled; firewalls must protect core equipment; passwords must be eight alphanumeric characters long or more, and not be the default one that can be looked up in the manufacturer's handbook on the Internet; encryption should be applied to all radio links and possibly also to wired links. It's not just the schoolboy hackers that must be prevented from gaining access to surveillance systems; terrorist groups will have no qualms about taking full advantage of any weak points in the system's security and being able to disable it at will. One end of the security system is, after all, in the security chief's own office.

Matthias Erler

Zelaris Elements from Eneo

Zelaris Elements freeware is a fully functional software solution for the management of IP-based video surveillance systems made of Eneo products. Display, recording and management of up to 16 IP cameras from the Zelaris user interface are possible. Cameras are recognized automatically, so integration is problem-free even with only little knowledge of networking. All connected cameras can then be managed centrally. The responsible security personnel are notified automatically should a camera malfunction. The recording time is seven days with video imagery from all sources being saved in 720x576pixels and 25 frames per second – i.e. in real-time. It is also possible to record Full HD video signals. Effective compression and therefore lower bandwidth and memory requirements is provided by selecting MJPEG, MPEG4 or H.264 compression.



www.eneo-security.com

HD-SDI Cameras And DVR



Samsung has introduced a HD-SDI camera and DVR range to deliver the benefits of Full HD over analogue cabling. Until now, the capture, viewing and recording of high definition images has been synonymous with IP network systems, the Company states. The technology however built into its new HD-SDI cameras and DVR allowed the transmission of uncompressed and non-packetized Full HD (1,080P) video over analogue cabling. One of the main benefits of HD-SDI technology is that there is zero loss of image data and no latency when viewing images. This makes the SCB-6000 fixed camera and SCD-6080 internal dome practical for applications where evidence grade images are required, such as airports, ports, banks, casinos and retail environments, but where it is not viable or cost effective, to transmit the images over a network. In order to offer a complete HD-SDI solution, the manufacturer has also introduced the HD-SDI four-channel SRD-480D DVR which offers real-time 1080p across selected channels or real-time at 720p resolution across all channels.

STEssecurity@samsung.com

Support For Hybrid Recorders

The Bosch 700 Series Hybrid Recorders are now supported by the latest versions of Genetec's IP video surveillance solutions – Omnicast 4.8 and the Security Center 5.1. This integration allows customers to view live and recorded standard definition video from the 700 Series recorders within the Omnicast and Security Center user interfaces. Customers can see live and recorded video, control pan-tilt-zoom cameras connected to the 700 Series, and manage video quality settings of live streams using Omnicast and Security Center. "Bosch works closely with Genetec to ensure a variety of hardware offerings are supported by the Omnicast and Security Center software platforms – providing customers with greater choice in video system design. Genetec is the first third-party VMS to support the 700 Series," said George Maroussis, product marketing manager, Bosch Security Systems. The 700 Series H.264 digital recorders support up to 32 IP or 16 analog cameras.

www.genetec.com

Pressurized Cameras

Siqura has released a PTZ dome camera line capable of withstanding harsh environments. Through pressurized dome housing, this camera line ensures airtight protection against excessive moisture, dirt, and pollution. This makes these cameras applicable for situations such as seaports and highway tunnels, where corrosive elements in the atmosphere can impede the performance of a surveillance system and cause unnecessary risks to safety and security. The pressurized PTZ dome cameras have an IP67 Ingress Protection rating and the housing is constructed of materials designed to withstand intense levels of solar heat (945VA UV protected). Pressurizing the housing, particularly with inert nitrogen gas, prevents moisture, pollution, and dust from damaging the camera. The dome series includes analog and IP options. Through their 400° per second preset positioning capability, 26x or 35x autofocus zoom lens, and 12x digital zoom, precision and expediency are achieved. Since surveillance conditions can vary widely even for just one camera, the cameras also include a day/night (IR-cut) filter and backlight compensation as standard features that can be applied manually or automatically when lighting conditions require it.



www.siqura.com

Open for Security and Safety Customers

Nice User Group (NGU) has opened up membership to Nice Security and Public Safety customers. The independent, user-led organization representing and supporting NICE customers, currently has over 5,000 members and includes over 1,000 organizations. Membership is free, and open to any Nice end user customers – now also including Security and Public Safety customers. The group is governed by a Board of Directors and Committee Chairs which is made up of 15 customers. Steve Sullivan (of CIT Group) is the CEO.

www.niceusergroup.org

X-Ray Systems for Air Cargo Screening



L-3 Security & Detection Systems (SDS) has added three new dual-view X-ray platforms to its air cargo-screening portfolio for inspecting break-bulk freight and skids, as well as larger pallet and ULD containers. "We are pleased to expand our air cargo offerings to include larger tunnels, higher power options and a flexible architecture that enables customers to upgrade their systems as new requirements emerge," said president Thomas M. Ripp. The systems include the PX10.10-MV, PX15.17-MV and PX18.18-MV. These systems are highly configurable, allowing customers to choose either a dual-view or single-view system that can be later upgraded in the field. The PX 10.10-MV offers customers high imaging performance with a low belt height for screening non-palletized freight. The high-powered PX 15.17-MV and PX 18.18-MV eliminate the need to unpack contents for inspection, accelerating screening of consolidated cargo in skids, pallets and ULDs.

www.L-3com.com/sds

SECURITY FOR PUBLIC TRANSPORTATION

The Inconspicuous Companion

Comprehensive Mobile Video Surveillance System for Public Transport



The Münchner Verkehrsgesellschaft (MVG) provides one of the most modern transport systems in the world. More than 500 million passengers travel every year via bus, tram and six subway lines over a network of 95 kilometers with 100 stations and nearly 580 subway cars. Early in 2008, a call for bids was made to equip the subway trains and streetcars with a video surveillance system.



The Munich-based company Indanet won the bid and was commissioned to equip 358 subway cars and 88 streetcars with a digital video surveillance system. Axis, as Indanet's partner, contributes the network cameras for the complete system, which consists of an Ethernet communications network, the network recorder with separate storage device, cameras, and evaluation stations. "In this case we had a special requirement that the solution had to run entirely via Ethernet and therefore be integrated into the existing Ethernet of the train units," explains Kurt Stern, Head of Traffic Telematics for Stadtwerke München GmbH (SWM) and MVG.

Dual Streams

Jurgen Fuchs, Indanet's general manager responsible for business development, describes the selection criteria for the cameras as follows: "We wanted a compact, rugged IP camera with railway approval for our customers that was easy to install and configure. Of course, it also had to support high-quality video which can be entered as evidence in court to identify offenders. At the same time, the camera needed to deliver two independent data streams: an MPEG-4-compressed stream recorded by our network recorder and stored, as well as an MJPEG stream for live transmission from the ve-

hicle to the control center via a data transmission system."

Axis has a special camera in its portfolio for this requirement: the Axis M3113-R. The palm-sized network camera is particularly robust and delivers high quality digital video images in spite of the rocking and shaking and the high humidity in mass transportation vehicles. "It is the first network camera on the market which incorporates the specific environmental and monitoring requirements for modes of transport," says Edwin Roobol, Regional Director Middle Europe for Axis Communications. He adds that, with this camera, a system can be set up allowing the em-

ployees of an alarm center to monitor the events in the vehicle under unusual circumstances. For example, if a vandal sprays the camera with graffiti, shaving foam or something similar, thus covering the camera's lens so that the camera can't take any more pictures, the Axis M3113-R triggers an alarm.

"The Munich police welcome SWM/MVG's gradual expansion of video surveillance in the Munich subway trains, buses and trams. In addition to the preventative aspect, i.e. the curbing of crime, video surveillance also makes an indispensable contribution to the criminal investigation and identification of perpetrators. The better the images, the more chances we have for successful search and identification operations" says Harald Pickert, head of the Crime Division, Police Headquarters, Munich.

Constant Evolution

The opening of the first section of the Munich subway in 1971 and its subsequent expansion to include the Olympic Stadium for the 1972 Olympic Games marked the advent of so-called industrial television. At that time, only stationary cameras were installed in the underground

stations, primarily to serve operational needs. By 1980, however, the subway network had grown so much that a central control center for scheduling purposes and station monitoring was put into operation at Marienplatz. To document incidents, each of the five monitoring sites in the subway control center was equipped with a video recorder, which could be started by pressing a button. In February 2004, the subway control center moved from Marienplatz to a new location and was also expanded to become the MVG operations center. The move was also a challenge for the video system. The traffic telematics infrastructure process network had been erected throughout the entire subway system with over 100 network nodes (switches) and more than 5,000 connections (ports).

The deployment of video surveillance systems on buses and trains is now a standard measure for increasing security and reducing vandalism. In Munich, 162 buses are already equipped with cameras. At the beginning of 2008 a call for bids was made to equip the subway trains and streetcars with a video surveillance system. The Munich-based company Indanet won the bid and was commissioned to equip 358 subway

cars and 88 streetcars with a digital video surveillance system.

Quick Search

"An example of a successful manhunt was the investigation into property damage caused by graffiti on December 5, 2010 in streetcar 17. The perpetrator and the act were recorded on camera. The images were published in the internal investigation records of the Munich police, which led to a policeman recognizing the perpetrator just days later," says Harald Pickert, head of the Crime Division, Police Headquarters, Munich.

▶ CONTACT

Axis Communications AB, Lund, Sweden
Tel.: +46 46 272 0 · Fax: +46 46 272 0
www.axis.com

Dome Cameras for High Security Applications

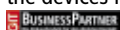
Samsung has added to its SCP range of PTZ dome cameras with models that capitalize on the technology incorporated into the manufacturer's Techwin's W-V and SV-V DSP chipsets. The ten new day/night operation dome models collectively offer the choice of 27x, 33x or 37x optical zoom capability and provide options for both internal and external use, making them suitable for car parks, shopping centers, trading estates, airports, ports and other high security applications. The W-V chipset provides cameras with the ability to capture superb quality color images at up to 600 TV lines color resolution. They also incorporate Super Dynamic Range (SSDR) which automatically lightens the dark areas within a scene, allowing an operator to 'view' objects in the shadows. Other technically advanced features include Highlight Compensation which neutralizes excessively bright areas of an image enabling an operator to view previously hidden details and Digital Image Stabilization (DIS) that can negate the effects of a dome shaking due to high winds or building vibration.



STESecurity@samsung.com

Infrared Motion Detectors

Heitel Digital Video has brought the external motion detector product range "IMD" (Infrared Motion Detection) onto the market. The detectors are high-performance passive infrared motion detectors, that have been specially developed for external surveillance purposes. The detectors are optimized for use in security technology applications in the field of video monitoring and intrusion detection technology. For the different site and application-specific conditions there are medium-range and long-range detectors with very small angles of aperture as well as volume detectors – as surface detectors – with different ranges and corresponding sizes of angles of aperture. The mounting height of up to 4m ensures a correspondingly low risk of sabotage. Configuration and diagnoses are easily carried out on the devices locally or remotely.



info@heitel.com

Alarm and Video

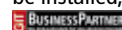
Abus Security-Center's Secvest IP unites alarm and video technology. In combination with the Secvest IP app it offers more operating and enhancement options: The user is informed immediately via push notification to the iPhone or iPad in case there is a break-in, fire or water. In case of an alarm, the Secvest IP FUAA100011 uses VoiP calls to inform the user on his mobile device, PC or landline phone. A corresponding app lets users conveniently receive voice messages, videos and images from the alarm center on their iPhone or iPad. In an emergency, alarms can be verified via a connected PIR network camera which provides a true picture of the situation. As a new feature, images from all cameras connected to Secvest IP can be stored in the center. This redundant data storage offers additional protection and facilitates central access to all stored image data via the app. In addition, users can use the app to request archived photos from the PIR network camera at any time. The app also informs users by audio output if there is a status change in the center. Internal activation is also possible.



m.herbert@abus-sc.com

Multi-Sensor System Awarded

Dallmeier's multi-sensor system Panomera won the Innovation Award at the All-Over-IP Forum in Russia. The All-Over-IP Forum, which took place late November in Moscow, is one of the most important networking events for IT, security and telecommunications experts in Russia. Every year, on the occasion of the exhibition, the All-Over-IP Award is given to particularly innovative products and technologies. The multi-sensor system was especially developed for the all-encompassing video surveillance of expansive areas. With this new camera technology, a huge area can be surveyed from a single location in a highly efficient manner. Therefore the requirements for infrastructure are lower: where previously several HD cameras had to be installed, a single system is enough.



info@dallmeier.com



CCTV

A Perfect Fit for Schools

Accrington Academy Installs Video Surveillance Platform to Protect Students, Staff and School

Accrington Academy is a publicly funded secondary school, providing education for 1,150 students aged 11–18 years. The Academy is located in Accrington, Lancashire in the United Kingdom, about an hour northeast of Liverpool, and is home to a diverse population of around 35,000. In 2008, the United Learning Trust began sponsoring the school, along with a number of others, at which time Accrington Academy opened featuring Sports and Mathematics specialisms as well as themes in ICT (Information and Communication Technologies) and Business and Enterprise.

The Business Challenge

Accrington Academy is situated in a building that was originally constructed in the 1920's. When the United Learning Trust began sponsorship, the building was expanded to accommodate a larger student body and was updated. Today, the school resides on a site that is a mix between the 1920's architecture and a newly built structure. The previous 15-camera analog video sur-

veillance system was no longer adequate after expansion of the building was complete. Moreover, the analog solution had only provided coverage of external areas and main thoroughfares.

Recent legislation has placed a large focus on student safety in schools that requires administrators to know the whereabouts of their students at all times. Staff must be able track each student's exit off the property, and also monitor to ensure that all who enter the property are supposed to be on campus. This poses a significant challenge to the institution, as keeping eyes on all corners of the facility is labour-intensive, and to achieve this without technological intervention would require an inordinate and expensive amount of staffing.

Additionally, between the hours of 6pm and 9pm, Accrington Academy allows other organisations to use their sporting and teaching facilities. Only a few staff members are onsite during these events, and surveillance is important to ensure safety and care of the property. Currently the frequency of these events is low, but the business model is changing to accommodate a significant increase in these extra-curricular, after-hour activities. External facilities and flood lights are being installed for evening events, and additional surveillance capabilities will be required to manage these new areas.

Upon receipt of funds from the United Learning Trust, Accrington Academy was able to look towards the design and installation of a compre-

hensive video surveillance system in the school. Their objectives were to address these issues, and to more broadly help protect staff, valuable equipment housed on campus for the Academy's ICT theme, and above all, students.

End-User Needs

In searching for a new security solution, Accrington needed to provide complete and uninterrupted coverage of all areas of the school in order to best comply with the new student safety legislation. The new system would need to be configured to work around the odd angles and spaces still present from the 1920's structure, and also extend into the classrooms to provide the necessary coverage as well as assist in resolution of misbehaviour.

Accrington Academy wanted a state-of-the-art platform to keep ahead of the technology curve, and decided to seek a future-proof IP system that would provide scalability and the flexibility to update, change or add cameras easily when necessary. Accrington Academy was also constrained by a limited budget, so it was vital that the new platform provide the greatest value relative to price.

Accrington Academy reviewed bids from three companies via three different integrators, stressing the need for open architecture, quality images, comprehensive coverage and expandability. In order to conclusively determine the best solution for Accrington's needs, Will Ames,

Director of Business and Operations at Accrington Academy, had a small test build created for each of the three candidates.

The Perfect Solution

"Our decision was easy to make because, of the three tests we ran, the best quality was delivered by Genetec's Omnicast video surveillance system," said Mr. Ames. GRANTfen Fire and Security, a Genetec Certified Integrator, had submitted the Omnicast bid after being referred to Accrington. When Omnicast was chosen, Stephen Harrison, IT and Project Manager at GRANTfen, was enlisted to assist in the design and installation of the new, state-of-the-art Omnicast system.

The school now boasts 151 megapixel cameras, recorded via two archivers. Video coverage is provided for each classroom, all main circulation points and nine external areas. A Dell Workstation with two monitors provides viewing stations, and Web access has been set up to allow teachers to monitor from their desks as well. Remote viewing is also enabled for senior members of staff, and there is a potential for mobile monitoring via smart phones in order for staff members to keep track of school security while on vacation. The remote monitoring feature is a large improvement over the last system, and allows staff greater flexibility to do their job effectively while on the go.

After hours, a specialist monitoring center manages campus security and has access to the surveillance data. There is also a possibility of integrating the school's separate access control system in the future, enabling a link between surveillance of doorways and access control information. About a quarter of the time, the Omnicast surveillance system is utilized for live monitoring. Particular uses include situations in which police might call to inform the school that an incident may be about to take place outside of the building. Using Omnicast's mapping feature, administrators can then quickly and easily identify the specific camera and pull up the surveillance feed to monitor the situation.

The remainder of the time, the system is used for after-the-fact incident review. This data is particularly helpful for resolving student disputes and minor disciplinary issues, though select data can also be collected on a disk and provided to law enforcement for review when necessary.

The Benefits

The Omnicast platform has provided Accrington Academy with peace of mind, knowing that they have the comprehensive video surveillance coverage they sought. They have even enabled sound capabilities on cameras in circulation areas, allowing staff to monitor students in the hallways both visually and auditorily. The Bookmarking feature enables them to quickly and easily flag a certain moment in a video feed to aid in a speedy review process later. Omnicast's user-friendly interface has easily melded into the school's daily operations. Moreover, the maintenance of the



system has gone well. Mr. Harrison noted that the system has been "incredibly stable" and does exactly what the school requires of it.

Accrington Academy has also been able to integrate its proprietary external intrusion detection system with the Genetec platform. Their passive infrared system monitors the external perimeter of the school building after hours. Accrington Academy was able to work with GRANTfen to create integration between these two systems, completely independently of any third-party programming or input from Genetec. GRANTfen created a feedback system allowing any broken infrared link to send an alarm to a micro controller. Omnicast is flexible enough to then receive and understand data from the micro controller, including location of the breach, which is used to drive changes within the platform such as an increase in recording rates or bookmarking of the relevant feed. Finally, that data drives an alert to a third-party monitoring company, which can then review the video feed, as well as speak to any intruders via an on-campus speaker system located outside the building.

After deploying Genetec's Omnicast, Accrington Academy noticed tangible improvements in security and management of incidents on the campus. "Since we installed Omnicast, a higher percentage of bullying incidents have been reported, reviewed and resolved via conclusive video evidence," reports Mr. Ames. Moreover, if a student complains of unjust discipline, video archives can be employed to illustrate justification for disciplinary action. This allows for smoother interactions with students, as well as a decrease in friction with parents who desire tangible evidence in order to feel their child's discipline was justified. Administrators can also monitor and prevent attempts by students to leave campus during school hours, or if not caught in time, can review video to locate the direction in which a student left to quickly track them down. More specifically, the Omnicast platform has already helped to solve a theft incident. "At one point, a mobile phone was reported stolen, and video archives were able to quickly reveal the student who had taken the phone, enabling recovery of the stolen property," said Mr. Ames.

The Flexibility to Grow

Omnicast has helped to better secure the Accrington Academy campus, but the school has

also started to find non security-based uses for the platform. Mr. Ames is in the process of setting up a monitoring classroom that employs the cameras' microphone features. This will allow teachers who request observation or guidance to conduct their classes in the monitoring room. There, the cameras will be able to unobtrusively monitor both sights and sounds in the classroom and provide feedback to supervisors and the teacher without disrupting the normal dynamics of the class in the way an outside observer physically sitting in might. "Right now we're on the tip of the iceberg where these additional system uses are concerned," said Mr. Ames.

In the future, there are plans to extend the building grounds, requiring an addition to the arsenal of cameras. An all-weather football pitch is planned, as well as a swimming pool within a few years, both of which will require increased video surveillance coverage. There are also plans to supplement the current cameras with extra coverage in more sensitive areas, such as the cashless vending area.

"This system provides us with the flexibility we need to use whatever hardware we prefer – whether low end or high end – depending on our financial capability. If, in the future, we have the ability to install higher megapixel cameras, our Omnicast platform will seamlessly transition to the new hardware without requiring a lengthy and costly rewiring or a massive system overhaul," said Mr. Ames. "It's just a really good system."

"What we like best about the Omnicast system is how it fulfills all of the customer's requirements very, very easily. There are a lot of systems out there that might have worked, but they would have been very complicated to implement," said Mr. Harrison. "Plus, Omnicast has proven to be an extremely stable solution. It's a perfect fit for the school. In fact, we are putting it into other schools as well – it's reasonably priced and exactly what they need."

▶ CONTACT

Genetec Inc., Saint-Laurent, Canada
Tel.: +1 514 332 4000 · Fax: +1 514 332 1692
pbelmonte@genetec.com · www.genetec.com

ONLINE SURVEY

A Clear Vote for Video over IP Solutions

Key Results of our Online Survey on Network Video Surveillance Systems



David Hammond,
Sanyo's European
Sales Manager

From September to October last year GIT-SECURITY.com did ask your opinion about Network Video Surveillance Systems in a Sanyo Sponsored Online Survey. We have now discussed the results and the responses to the questions in the survey with David Hammond, European Sales Manager at Sanyo's video surveillance division.

GIT SECURITY: A network based video surveillance system has substantial advantages compared to traditionally installed analogue based systems. Does the survey reflect this?

David Hammond: Yes, and there are two statistics which particularly stand out. One is that almost 70 % of respondents said they were more likely in the next twelve months to promote a Video over IP solution in preference to an analogue based system. In fact, only 8.5 % said they would not, with 22 % declaring the question was not relevant to them. This is a vote of confidence in IP Network based security solutions and indicative of the fact that increasingly installers and system integrators are acquiring the expertise needed to install and support a Video over IP system.

Another question was, whether the respondents have installed Full HD cameras in the last twelve months. What was the result?

David Hammond: 54 % of respondents said they had installed Full HD cameras in the last twelve months. This reflects the dramatic sales growth Sanyo has experienced in the last two years and in the last six months in particular. Bearing in mind the superb quality of the images captured by Full HD cameras and that quite often, depending on the field of view, they can do the job of 4/5 standard cameras, it should not perhaps be surprise that they are proving so popular among installers and system integrators. They are certainly being accepted as main stream products at a far faster rate compared to other new technologies introduced in the past into the security market e.g. when DVRs were introduced as an alternative to VCRs.

About 60 % of the respondents said that their expectation of the price that an end-user should pay for a Full HD camera is between € 700 and 800. Another 25 % expect the price range to be between € 800 to € 900. What do you think is the reason that customers value Full HD cameras that much?

David Hammond: As mentioned, the fact that they can do the job of 4 to 5 standard cameras is important. With its multi-streaming capabilities, Full HD cameras are able to deliver real-life operational benefits when installed as part of an IP network based video surveillance system. The positive response highlighted in point one is therefore very good news in respect of the prospect of further strong growth in the sales of Full HD cameras during 2012 and beyond. In a tough economic environment, any product or service that is valued that much by the customers and which can help build on relationships with existing clients and open doors to new business, must be a welcome addition to any installer's portfolio.

▶ CONTACT

Sanyo Europe Ltd., Watford, UK
Tel.: +44 1923 477 220 · Fax: +44 1923 477 225
cctv@sanyo.co.uk · www.sanyo.co.uk

City of Westminster College has invested in the latest IP Video technology from IndigoVision to provide integrated CCTV surveillance for its new flagship campus. Opened in January 2011, the £102m project involved the re-development of the College's former Paddington Green site in Central London into a new state-of-the-art Campus. Facilities include specialist science labs, a large sports hall and a wide range of construction skills and engineering workshops, as well as community access to facilities such as the Sarah Siddons Theatre and Garden Café. The solution was designed and installed by GES Security Services.



The new City of Westminster College building
(Picture courtesy of schmidt hammer lassen architects)

CCTV

London College Embraces IP Video Surveillance

Integrated Solution Based on IndigoVision's Security Management System

Rapid Incident Response

Using IP-networked digital CCTV has transformed the College's use of surveillance, as Robin Pellett, the College's Estates Manager explains, "The quality and clarity of the images is far superior to anything that we had experienced in the past. The versatility and ease of use of the video management software, together with the integration of the intruder detection system, creates an efficient and effective operator environment that ensures rapid incident response."

The main security control room uses a four-monitor workstation running 'Control Center', IndigoVision's Video Management Software. Alarms from a Galaxy intruder system are directly integrated with the IndigoVision solution, allowing security breaches to automatically trigger any number of events within the IP Video system. For example, a camera can be panned to a preset position to view the zone in alarm and the location of the alarm highlighted on an interactive building map within Control Center.

"IndigoVision's low-bandwidth scalable architecture has made the installation and deployment of the system very simple," added Robin.

"We have been able to use the existing College IT infrastructure and minimise the amount of cabling. The flexibility of the new CCTV system means it's easy for us to move or add cameras as the building use changes and grows."

A total of 85 IndigoVision fixed and PTZ IP cameras are installed inside and outside the building. Many incorporate Power-over-Ethernet (PoE) technology, allowing them to be powered directly from the network, further reducing installation costs. All that is needed to connect additional cameras in the future is a local CAT-5 network point.

Aesthetics Meets High Tech

"The design of the building is superb, with the use of glass and open spaces to create a wonderful learning environment. However, this presented GES with the challenge of designing effective security without disturbing the building aesthetics," said Stephen Hastings, Sales Manager for GES. "By working closely with the College and deploying IndigoVision's fully-digital distributed IP Video technology, we have achieved an integrated security solution

that has exceeded the college's high expectations."

All cameras are recorded 24/7 on five IndigoVision Network Video Recorders (NVRs) for 30+ days. The amount of storage required is significantly reduced compared to other IP Video systems because of IndigoVision's advanced compression technology and the use of the unique Activity Controlled Framerate (ACF) feature, which is built into the IP cameras. ACF controls the framerate of the video stream based on the amount of motion in the scene. When there is no activity, video is streamed at minimal framerate; the instant any motion is detected, video is simultaneously transmitted at maximum configured framerate. This significantly reduces the bandwidth and NVR storage requirement for cameras monitoring generally static scenes or during quiet periods such as at night.

▶ CONTACT

IndigoVision, Edinburgh, UK
Tel.: +44 131 475 7200 · Fax: +44 131 475 7201
enquiries@indigovision.com · www.indigovision.com

In Focus: Samsung SNB-5000

Samsung's model SNB-5000 box camera is part of Samsung's 1.3-megapixel HD network camera series conform to ONVIF. The camera incorporates the newly developed WiseNet Digital Signal Processing, provides 1280x1024 resolution and includes an H.264, MPEG-4 and MJPEG triple codec with multiple simultaneous streaming. The camera supplies maximum 30 frames-per-second video at HD resolution and features an Intelligent Video Analytics (IVA) capability.



CAMERA TEST

Performance

Performance when used at 1,000 Lux

The camera delivers a clear picture with very neutral, but somewhat de-saturated colours. Overall the contrast can be evaluated as very good. However, because of the slightly restricted contrast range very dark colours are depicted somewhat too brightly. The image sharpness on stationary objects is good. Both the hairs on the test figure and the lines in the test image are sharply delineated. Slight blurring is detectable with moving objects. Image noise is minimal.

Performance when used under 1,000 Lux

The camera rapidly compensates for fluctuations in lighting. With reducing illumination the camera image becomes darker overall. The camera cannot fully compensate for the reduced illumination. As a result, with poor illumination not all colour gradations are clearly recognisable and the colours appear somewhat paler. The overall sharpness reduces somewhat and blurring effects are detectable with moving objects. Noticeable image noise only occurs at approx. 2 Lux. At 0.5 Lux the camera was manually switched to night mode. In this mode it delivers a very clear b/w image with a slightly reduced contrast range.

Performance when used in backlight situations

After the sudden occurrence of backlight the camera delivers the first b/w image after about 2 seconds with extreme blooming of the backlight source and definitely noticeable smearing. The image stabilises after a further 2 seconds. Background details are now recognisable. There is a little less blooming of the backlight source and the smearing reduces.

Performance in use: bandwidth measurement

On average, the camera requires a bandwidth of 6.85 MBit/s. The bandwidth graph is quite linear. Brief peak values of 10.6 MBit/s are reached during compensation.

Summary

The day/night fixed camera with a maximum resolution of 1.3 megapixels (HD ready 720p is supported) can deliver several MJPEG, MPEG4 and H.264 streams simultaneously. It provides adequate onboard image analysis, an SD slot and the power supply is via PoE.

Technical data for the camera test

Manufacturer	Samsung
Model	SNB-5000
Firmware version	2.00_110608
Distance to test chart	0.6 m
Lens used	Fujinon 1:1,2 / 2,8-8mm MP (DC)
*Focal length set	ca. 6 mm
*Compression method	H.264
*Resolution	1,280 x 720
*Compression	50%
I-Frame-interval	1 second
Max. stream bandwidth	unlimited
Measured frame rate	29 fps
Average bandwidth	6.85 Mbit/s

*The camera was integrated into the test system with the "default" settings. The settings were modified according to the test criteria listed above.

Assessment with differing illumination conditions

Criteria Lux values	1000 Lux	100 Lux	10 Lux	0,5 Lux	0 Lux + *BL1
Colours	1.5	2	2.5	b/w	–
Contrast	2	2.5	2.5	3	3.5
Focus	2	2	2.5	2.5	2
Motion sharpness	2.5	3	3	3	2.5
Image noise	2	2	2	2.5	2
Recovery from backlight	–	–	–	–	3.5
Performance against backlight	–	–	–	–	3

Assessment was performed according to the rating system of 1 (very good) to 6 (unsatisfactory). By setting various parameters on the camera interface itself (SSNR, WDR, BLC on/off), it is possible to obtain an improved image quality.

Test the Best!

Together with Seetec, GIT SECURITY has tested both current and new video cameras in the test lab of the Hardware Competence Centers of Seetec under controlled conditions. The Hardware Competence Center was formed because manufacturer's own data and the features of network cameras were often established under different conditions and were not reliable facts when put into practice. These results provide a valid basis for the planning of IP video projectors and help to prevent unpleasant surprises. Video sequences are created for the tests under various defined light situations and then evaluated. Both movement in the picture and night or backlight situations are taken into account.

In Focus: Bosch NBN 832

Dinion HD 1080p Day/Night IP cameras are progressive scan CMOS cameras that use the Bosch-designed Dinion digital imaging technology. The Bosch NBN 832 camera uses the latest CMOS-based HD sensor for a sharper, more detailed picture with a 16:9 image format. Features such as multicasting, internet streaming and iSCSI recording are fully supported. The NBN 832 aims to deliver the highest standards of performance and reliability in any security and surveillance scenario, day or night.



Performance

Performance when used at 1,000 Lux

With optimum illumination the camera delivers a very clear image with a slightly restricted contrast range (black appears dark grey, white surfaces are slightly cloudy). Colours are reproduced clearly with natural saturation. Only a minimal yellow tinge is apparent. Even fine details in the image (hairs of the test figure, thin lines in the test chart) are sharply depicted. There are hardly any smearing effects on moving objects and image noise is also minimal.

Performance when used under 1,000 Lux

The camera takes a little time to adjust to changes in lighting. This is apparent in the compensation processes, which may take several seconds, during which however the image remains clearly visible. Colour saturation reduces with very poor illumination, at first insignificantly, but the clearly apparent below 5 Lux. The contrast only deteriorates slightly. Especially below 2 Lux the image becomes less sharp overall and increased smearing effects are noticeable with moving objects. At 0.5 Lux a manual switchover to night mode (b/w mode) was performed. Here, the camera delivers a comparatively high contrast image.

Performance when used in backlight situations

The camera rapidly compensates for the occurrence of sudden backlight in a dark environment the camera (approx. 2 seconds) and delivers a stable image in which background details are visible. There is some blooming of the backlight source and a slight smearing effect is apparent.

Performance in use: bandwidth measurement

The bandwidth use of the camera is largely linear at 4 MBit/s. The bandwidth only increases to 5.41 MBit/s in extreme lighting situations and during compensation.

Summary

The day/night fixed camera with full HD resolution features good image and reaction characteristics even in difficult lighting situations (backlight, poor illumination). It provides simple image analysis algorithms (movement detection) directly in the camera as well as multi-streaming. The camera power supply is via PoE but also 12VDC or 24VAC. The camera can be delivered in an IVA enabled version.

Technical data for the camera test

Manufacturer	Bosch
Model	NBN 832
Firmware version	66500500
Distance to test chart	0,4 m
Lens used	Bosch MP5 CS 9-40mm F 1.8
* Focal length set	9 mm
*Compression method	H.264
*Resolution	1,920 x 1,080
*Compression	-
I-Frame-interval	1 second
Max. stream bandwidth	4,096
Measured frame rate	29 fps
Average bandwidth	3.95 Mbit/s

*The camera was integrated into the test system with the "default" settings. The settings were modified according to the test criteria listed above.

Assesment with differing illumination conditions

Criteria Lux values	1000 Lux	100 Lux	10 Lux	0,5 Lux	0 Lux + *BL1
Colours	1.5	1.5	2	b/w	2.5
Contrast	2	2	2	2.5	3
Focus	1.5	2	2	2.5	2.5
Motion sharpness	2	2	2	3	2
Image noise	2	2	2	2.5	2
Recovery from backlight	-	-	-	-	2
Performance against backlight	-	-	-	-	2

Assessment was performed according to the rating system of 1 (very good) to 6 (unsatisfactory). By setting various parameters on the camera interface itself, it is possible to obtain an improved image quality.

In Focus: Basler BIP2 1920c dn

The ultra-compact and price-sensitive Basler BIP2-1920c-dn IP camera is equipped with a 1920 x 1080 pixel CMOS sensor and delivers real-time video data at 30 fps with Full HD resolution. H.264 compression ensures minimal bandwidth. Basler's latest line of box cameras are the smallest, cameras on the market. Multi-Encoding offers the full range of video compression techniques: H.264, MPEG4 or MJPEG. The Area of Interest (AOI) feature allows users to define customized regions within the field of view. Selected AOIs can be streamed and encoded separately as virtual cameras.



CAMERA TEST

Performance

Performance when used at 1,000 Lux

With good illumination the camera delivers a good image. The colours are clear and warm, with a slight red tinge. The contrast range is very good with saturated blacks and very clear whites. However dark surfaces tend to blur a little. Image sharpness is good. A slight smearing effect is apparent with moving objects. Only minimal image noise is detectable.

Performance when used under 1,000 Lux

The colours become slightly dull as the illumination reduces. The camera cannot fully compensate for the lack of light; subject brightness and contrast reduce somewhat and image noise increases. In the test, the camera switched to night mode at 0.5 Lux. In this case, compensation took approx. 4 seconds. The b/w image which was then displayed was a little dark and had a low contrast. Image blurring with moving objects definitely increases with reduced illumination. This effect can be reduced by setting an appropriate exposure time limit.

Performance when used in backlight situations

With the sudden occurrence of backlight in a dark environment the camera delivers the first b/w image after approx. 1.5 seconds, with definite smearing. Completion of the compensation process takes a further 2 seconds. Finally, a colour image with a low contrast range is displayed. Details in the image background can still be perceived. There is definite blooming of the backlight source (about four times the area). Slight smearing effects are also detectable.

Performance in use: bandwidth measurement

The camera uses an average bandwidth of 6.57 MBit/s at 15 – 29 images per second. With good illumination the use of the bandwidth is largely linear – the data transfer rate only reduced in the poor illumination area due to the lower image rate, while with backlight the rate increases considerably to up to 16.9 MBit/s.

Summary

The full HD camera with day/night capability features an extremely compact design. Powered via PoE, the camera can provide two parallel video streams in MJPEG, MPEG4 or H.264 and supports motion detection and definition of areas of interest.

Technical data for the camera test

Manufacturer	Basler
Model	BIP2 1920c dn
Firmware version	3.4.2
Distance to test chart	1 m
Lens used	MP5 CS 9-30mm F 1.8
*Focal length set	9 mm
*Compression method	H.264
*Resolution	1,920 x 1,080
*Compression	50%
I-Frame-interval	1 second
Max. stream bandwidth	unlimited
Measured frame rate	16–29 fps**
Average bandwidth	6.57 Mbit/s

*The camera was integrated into the test system with the "default" settings. The settings were modified according to the test criteria listed above. ** can be increased when using a reduced exposure time limit.

Assessment with differing illumination conditions

Criteria Lux values	1000 Lux	100 Lux	10 Lux	0,5 Lux	0 Lux + *BL1
Colours	2	2	2.5	b/w	3
Contrast	2	2.5	2.5	4	4
Focus	2	2	2.5	3	3
Motion sharpness	2	2.5	3	4.5	2
Image noise	2	2	2.5	3	2
Recovery from backlight	–	–	–	–	4
Performance against backlight	–	–	–	–	3.5

Assessment was performed according to the rating system of 1 (very good) to 6 (unsatisfactory). By setting various parameters on the camera interface itself, it is possible to obtain an improved image quality. By changing the exposure settings for low light and backlight conditions better results are achievable for these conditions.



Alarm Management

DIGISOUND®

Digisound Electronic GmbH
Oststraße 54 · 22844 Norderstedt
Tel. +49(0)40/526869-0 · Fax +49(0)40/526869-13
info@digisound.de · www.digisound.de
Acoustic buzzers, piezo-electric sounders, electronic beacons, speakers, and transducers

Security Management

advancis
SOFTWARE & SERVICES

Advancis Software & Services GmbH
Monzastraße 2 · D-63225 Langen
Tel.: +49 (6103) 80735-0 · Fax: +49 (6103) 80735-11
info@advancis.de · www.advancis.de
WinGuard – Integral system for security and building management, control and visualization, alarm management, video management, communication

Facility Security

DICTATOR

Dictator Technik GmbH
Gutenbergstr. 9 · 86356 Neusäß
Tel. +49(0)821/24673-0 · Fax +49(0)821/24673-90
info@dictator.de · www.dictator.de
Drive units, hold open systems and smoke detectors, door control solutions

Alarm Management

TAS
TELEKOMMUNIKATION
SICHERSTES CHINIK
GEBÄUDEMANAGEMENT
DATENTECHNIK

TAS Telefonbau
A. Schwabe GmbH & Co. KG
Langmaar 25
D-41238 Mönchengladbach
Tel. +49 (0) 2166 858 0 · Fax: +49 (0) 2166 858 150
info@tas.de · www.tas.de
Manufacture and development of: alarm and conference units, VoIP- or ISDN emergency technology, alarm transmission systems

Security Management

level one

LevelOne is a trademark of Digital Data Group

Digital Data Communications GmbH
Zeche-Norm-Straße 25 · D-44319 Dortmund
Tel. +49 (0) 231-9075-222 · Fax +49 (0) 231-9075-184
sales@level-one.de · www.level-one.de
LevelOne provides full service – even when it comes to security: A broad range of high quality IP-products, combined with expertise in projects, assure reliable security solutions in all dimensions.

Facility Security

GEZE

GEZE GmbH
Reinhold-Vöster-Str. 21-29 · D-71229 Leonberg
Tel. +49(0)7152/203-0 · Fax +49(0)7152/203-310
vertrieb.services.de@geze.com · www.geze.com
Automatic door systems, security systems, security locks

Alarm Management

tetronik

tetronik GmbH
Angewandte Elektronik und Nachrichtentechnik
Silberbachstr. 10 · D-65232 Taunusstein
Tel. +49-6128-963-1 · Fax +49-6128-963-499
info@tetronik.com · www.tetronik.com
broadcasts and alarms, telephone conferences, personal security measures with location tracking and visualisation, one number services and group calls, announcement and open listening services, telephony access services for host systems

Security Management

funkwerk
pletta

Funkwerk plettac electronic GmbH
Würzburger Straße 150 · D-90766 Fürth
Tel. 0911/75884-0 · Fax 0911/75884-220
info@plettac-electronics.de
www.cctv-systeme.com
CCTV, system solution, system integration, video monitoring security, building management

Facility Security

Simons Voss
technologies

SimonsVoss Technologies AG
Feringastr. 4 · D-85774 Unterföhring
Tel. +49(0)89/99228-180 · Fax +49(0)89/99228-222
marketing@simons-voss.de · www.simons-voss.de
Digital locking and organisation systems with optional access control and time recording

Video Technology

Security Management

SCHILLE

Schille Informationssysteme GmbH
Goseriede 4 · D-30159 Hannover
Tel. +49(0)511/542244-0 · Fax +49(0)511/542244-22
info@schille.com · www.schille.com
Facility and building management and security technology, fault and hazard management systems, OPC development, video surveillance systems

Alarm Management

Video Technology

ABUS Security-Center
Security Tech. Germany

ABUS Security-Center GmbH & Co. KG
Linker Kreuthweg 5, D-86444 Affing
Tel. +49 (0) 8207 / 9 59 90 - 333
Fax +49 (0) 8207 / 9 59 90 - 100
info.de@abus-sc.com · www.abus-sc.com
ABUS Security-Center is one of the leading manufacturers of electronic security technology. As a full-line supplier, ABUS Security-Center consistently markets an international range of products and services for the market segments of intrusion detection and video surveillance.

Be Part of the Section

GIT BUSINESSPARTNER
The Purchasing Section for direct contact

Just send a mail to
heiko.baumgartner@wiley.com

We will be glad to advise you!

Alarm Management

DAITEM

ATRAL-SECAL GmbH
Service Daitem
Thaddenstr. 4 · D-69469 Weinheim
Tel. +49(0)6201/6005-0 · Fax +49(0)6201/6005-15
info@daitem.de · www.daitem.de
Radio-controlled burglary alarm systems, radio-controlled fire warning devices, distribution via security suppliers

Video Technology

aimetis

Aimetis GmbH
Am Prime Parc 7 · D-65479 Raunheim
Tel. +49 (0) 6142 20798 60 · Fax +49 (0) 6142 20798 89
info@aimetis.com · www.aimetis.com
Aimetis Symphony™ is award-winning intelligent video surveillance software that offers a single, innovative, open IP video platform for video management, video analytics, system integration and alarm management.

Video Technology



Axis Communications GmbH
Lilienthalstraße 25 · D-85399 Hallbergmoos
Tel. +49 (0)811 55508-0 · Fax +49 (0)811 55508-69
info-de@axis.com · www.axis.com
Network video equipment – the AXIS IP-Surveillance allows remote access video management

Video Technology



Eneo is a registered trade mark of VIDEOR
E. Hartig GmbH, Rödermark. Distribution via authorized dealers and installers.

info@eneo-security.com · www.eneo-security.com

Products and solutions for video security applications

Video Technology



Milestone Systems Germany
Harald Zander, Country Manager
c/o Ecos Office Center
Gustav-Stresemann-Ring 1
65185 Wiesbaden
Office: +49 (0) 611 168 5597
Mobile: +49 (0) 176 62479674
www.milestonesys.de

Milestone is the world's leading provider of open platform IP video surveillance software. Milestone's XProtect® software is a powerful surveillance solution that is easy to manage and supports the widest choice in network hardware and integrations with other business systems.

Video Technology



BWA Technology GmbH
Johann-Krane-Weg 21 · D-48149 Münster
Tel.: +49(0)251/289199-0 · Fax: +49(0)251/289199-29
info@bwatech.com · www.mybwa.com
CCTV robots and portable MPEG4/H.264 DRVs

Video Technology



Everfocus Electronics GmbH
Albert-Einstein-Str. 1 · 46446 Emmerich
Tel. +49(0)2822/9394-0 · Fax +49(0)2822/9394-95
info@everfocus.de · www.everfocus.de
Digital video technology, video remote surveillance, video surveillance

Video Technology



MINTRON ENTERPRISE CO. LTD.
No. 123, Wu-Kung 1 Rd., Wu-Ku Industrial Park,
Taipei 248, Taiwan
Tel. +886 2 22990277 · Fax +886 2 22989375
service@mintron.com.tw · www.mintron.com
Skype: mintron3601
Manufacturer of extensive range CCD cameras and board type cameras. OEM & ODM projects are welcomed.

Video Technology



CBC (DEUTSCHLAND) GmbH

CBC (Deutschland) GmbH
Hansaallee 191 · D-40549 Düsseldorf
Tel. +49(0)211/530670 · Fax +49(0)211/53067180
info@cbc-de.com · www.cbc-de.com
Video monitoring components – e.g. cameras, lenses, screens, monitoring technologies, DVR, NVR.

Video Technology



eyevis GmbH
Hundschleestr. 23 · D-72766 Reutlingen
Tel. +49(0)7121/43303-0 · Fax +49(0)7121/43303-22
info@eyevis.de · www.eyevis.de
Large surface displays of security information in control rooms

Video Technology



MOBOTIX AG
Security-Vision-Systems
Kaiserstrasse · D-67722 Langmeil
Tel. +49 (0) 6302/9816-0 · Fax +49 (0) 6302/9816-190
info@mobotix.com · www.mobotix.com
HiRes Video Solutions – high resolution, digital & cost effective recording

Video Technology



Dallmeier electronic GmbH & Co. KG
Cranachweg 1 · 93051 Regensburg
Tel. +49(0)941/8700-0 · Fax +49(0)941/8700-180
info@dallmeier.com · www.dallmeier.com
Video: digital storage systems, image transmission, available through specialized retailers

Video Technology



Genetec
2280 Alfred-Nobel Blvd
Suite 400, Montreal, Quebec H4S 2A4, Canada
Tel.: +1/514 332-4000 · Fax: +1/514 332-1692
info@genetec.com · www.genetec.com
License Plate Recognition, IP Security Solutions for Video Surveillance, and Access Control

Video Technology



MONACOR INTERNATIONAL
Zum Falsch 36 · 28307 Bremen
Tel. +49(0)421/4865-0 · Fax +49(0)421/488415
info@monacor.de · www.monacor.com
Video monitoring components and systems

Video Technology



DEKOM Video Security & Network GmbH
Hoheluftchaussee 108 · D-20253 Hamburg
Tel. +49(0)40/4711213-0 · Fax +49(0)40/4711213-33
info@dekom-security.de · www.dekom-security.de
www.divicro.de – Offices in Munich, Stuttgart, Cologne, Erkelenz, Bremen, Magdeburg and Berlin.
Your reliable partner and provider of professional network video products and complete system solutions.

Video Technology



HeiTel Digital Video GmbH
Stuthagen 25 · D-24113 Molfsee/Kiel (Germany)
Tel. +49(0)4347/903-0 · Fax +49(0)4347/903-400
info@heitel.com · www.heitel.com
Digital Video Transmission and Recording, Video Management, Monitoring Station Integration

Video Technology



opto-system-technik
Video-Vertriebsgesellschaft mbH
Planiger Straße 34 · D-55545 Bad Kreuznach
Tel. +49(0)671/4830-10 · Fax +49(0)671/4830-11
info@opto-system-technik.de
www.opto-system-technik.de
Distributor of SONY, SANYO, Pelco,
Dedicated Micros and EverFocus

Video Technology



DynaColor, INC
NO.116, Jou Tz Street, Neihu, Taipei 114, Taiwan
Tel: +886-2-2659-8898 · Fax: +886-2-2659-8868
info@dynacolor.com.tw · www.dynacolor.com.tw
Manufacturer of IP surveillance and HD-SDI / CCTV products.

Video Technology



logiware gmbh
Alfred-Mozer-Str. 51 · D-48527 Nordhorn
Tel. 05921/7139920 · Fax 05921/7139929
info@logiware.de · www.go1984.de
Software, video transmission systems, security, video, video surveillance systems, digital video surveillance, networking

Video Technology



PENTAX RICOH IMAGING SYSTEMS GmbH
Julius-Vosseler-Str. 104 · D-22527 Hamburg
Tel. +49(0)40/561 92-109 · Fax +49(0)40/561 92-334
ssd@pentax.de · www.pentax.de
CCTV lenses for video surveillance, image processing, accessories for CCTV lenses

Video Technology

PIEPER
Partner für bessere Technik

PIEPER GMGH
Binnerheide 8 · D-58239 Schwerte
Tel. +49(0)2304/4701-56 · Fax +49(0)2304/4701-77
info@pieper-video.de · www.pieper-video.de
System suppliers of general and industrial video technology, focussing on the security and surveillance sectors, as well as quality control and process control applications.

Time + Access



Time + Access

Gantner technologies

Gantner Electronic GmbH
Montafonerstraße 8 · A-6780 Schruns
Tel. +43 5556 73784-542 · Fax +43 5556 73784-8000
info@gantner.com · www.gantner.com
access control solutions/biometrics, time management, data capture, locking systems

Video Technology

SANTEC VIDEO TECHNOLOGIES

Sanyo Video Vertrieb AG
An der Strusbek 31 · 22926 Ahrensburg · Germany
Tel. +49 4102 4798 0 · Fax +49 4102 4798 10
info@santec-video.com · www.santec-video.com
Video monitoring technology · Video-over-IP
Outdoor IR sensors · Planning and Services

Time + Access

A Z S SYSTEM AG

AZS System AG
Mühlendamm 84 a · 22087 Hamburg
Tel. +49 (0) 40/226611 · Fax +49 (0) 40/2276753
www.azs.de · anfrage@azs.de
Hardware and software solutions for biometrics, locking systems, video control systems, time management systems, access control systems, escape route safety systems, barrier systems, isolation systems, OPC Server

Time + Access

IDENT TECHNOLOGIES
Biometrische Identifikations-Systeme

Ident Technologies GmbH
Rudower Chaussee 29 · D-12489 Berlin
Tel. +49(0)30/63922568 · Fax +49(0)30/63922569
info@identtechnologies.de · www.identtechnologies.de
We create biometric Systems, to make our life easier – the fingerprint will be our key.

Video Technology

via:sys

viasys Intelligent Video GmbH
Koselstraße 20, D-60318 Frankfurt am Main
Tel. +49 (0)69/7191 388 – 0
Fax +49 (0)69/7191 388 – 66
jourdan@viasys-iv.com · www.viasys-iv.com
Intelligent video sensors (3D, direction, sensitivity), reliable alarms, especially outdoors, connection to Alert Centre

Time + Access

cichon+STOLBERG cryptina

Cichon+Stolberg GmbH
Wankelstraße 47-49, 50996 Köln
Tel. +49(0)2236/397-200 · Fax +49(0)2236/61144
info@cryptin.de www.cryptin.de
Operational data collection, time recording, access control

Time + Access

ISGUS UNTERNEHMENSGRUPPE

ISGUS GmbH
Oberdorfstr. 18–22
78054 Villingen-Schwenningen
Tel. +49(0)7720/393-0 · +49(0)7720/393-184
info@isgus.de · www.isgus.de
Operational data capture, personnel scheduling, time management, access control

Video Technology

VICON

VICON Deutschland GmbH
Kornstieg 3 · D-24537 Neumünster
Phone: +49(0)4321/879-0 · Fax +49(0)4321/879-97
info@vicon-cctv.de · www.vicon-cctv.de
VICON as one of the world's leading independent manufacturers of CCTV equipment, offers a complete portfolio of the most advanced video management products.

Time + Access

deister electronic The RFID Company

deister electronic GmbH
Hermann-Bahlsen-Str. 11
D-30890 Barsinghausen
Tel. +49(0)5105/516-01 · Fax +49(0)5105/516-217
info@deister-gmbh.de · www.deister.com
access control; vehicle identification; biometric verification; guard tour systems; storing and management of keys and valuables

Time + Access

LEGIC innovation in ID technology

LEGIC Ident systems Ltd
Binzackerstrasse 41 · CH-8620 Wetzikon
Switzerland
Phone +41 44 933 64 64 · Fax +41 44 933 64 65
www.legic.com · info@legic.com
Designer and manufacturer of 13.56 MHz contactless smart card technology (read/write chip sets, security modules and transponder chips)

Video Technology

VIDEOR

VIDEOR E. Hartig GmbH
Carl-Zeiss-Str. 8 · 63322 Rödermark/Germany
Tel. +49(0)6074/888-300 · Fax +49(0)6074/888-100
security@videor.com · www.videor.com
Distribution of complete product ranges for video security and video networking

Time + Access

DigiMem

DigiMem Deutschland Ltd & Co KG
Büro Wiesbaden: Didierstraße 7 · D-65203 Wiesbaden
Tel: +49 (0)611 710 9949 · Fax: +49 (0)611 710 9952
david@digimem.eu · www.digimem.eu
Digimem is the appointed agency of Datakey Electronics (USA) and provides full bi-lingual sales and service support for German, Swiss and Austrian customers. Supply of Datakey Keys and Tokens, accessories and periphery to OEMs. Support with the integration of these components into an application to ensure a turnkey system.

Time + Access

pcs

PCS Systemtechnik GmbH
Pfälzer-Wald-Straße 36 · 81539 München
Tel. +49(0)89/68004-550 · Fax +49(0)89/68004-555
intus@pcs.com · www.pcs.com
time recording, access control, BDE/MDE, biometric, video, SAP

Video Technology

VTQ VIDEOTRONIK QUERFURT

VTQ Videotronic GmbH
Grüne Straße 2 · D-06268 Querfurt
Tel. +49 (0) 34771-5 10 · Fax +49 (0) 34771-2 20 44
main@vtq.de · www.vtq.de
systems for digital and analogue wireless video, audio and data transmission, COFDM modulation, MPEG2 compression, directional radio systems, Diversity systems

Time + Access

FEIG ELECTRONIC

FEIG ELECTRONIC GMBH
Lange Straße 4 · 35781 Weilburg
Tel. +49(0)6471/3109-44 · Fax +49(0)6471/3109-99
obid@feig.de · www.feig.de
Electronic locking systems, identification, access control, access road control

Time + Access

phg Die richtige Verbindung

phg Peter Hengstler GmbH + Co. KG
Dauchinger Str. 12 · D-78652 Deißlingen
Tel. +49(0)7420/89-0 · Fax +49(0)7420/89-59
datentechnik@phg.de · www.phg.de
RFID components for access control, timekeeping, factory data collection, canteen data, leisure applications, surface-mounted devices, flush-mounting components, biometrics, identification media and accessories

Time + Access



primion
security solutions

primion Technology AG
Steinbeisstraße 2-4 · D-72510 Stetten a.K.M.
Tel. +49(0)7573/952-0 · Fax +49(0)7573/92034
info@primion.de · www.primion.de
Time management, access control and management, staff deployment planning, graphic alarm management, SAP communications solutions, pass and ID card production, Biometrics

Fire Protection



Kidde
AUTC Fire & Security Company

Kidde Brand- und Explosionsschutz GmbH
Harkortstraße 3 · 40880 Ratingen
Tel. +49(0)2102/5790-0 · Fax +49(0)2102/5790-109
info@kidde.de · www.kidde.de
Fire detection and extinguishing technology · high sensitive smoke detection · fire protection systems for server cabinets and IT rooms · explosion suppression systems · Explosion venting

Hazardous Goods




Time + Access



wanzl
Zutrittskontrollen

Wanzl Metallwarenfabrik GmbH
Bubesheimer Str. 4 · 89340 Leipheim · Germany
Tel. +49(0)8221/729-6416
Fax +49(0)8221/729-90416
zutrittskontrollen@wanzl.de
www.wanzl-zutrittskontrollen.com
Personal guidance systems, barriers, security turnstiles, electronic entrance systems

Fire Protection



NOTIFIER
by Honeywell

Notifier Sicherheitssysteme GmbH
Stadionring 32 · D-40878 Ratingen
Tel. +49(0)2102/70069-0 · Fax +49(0)2102/70069-44
info@notifier.de · www.notifier.de
fire alarm systems, early fire detection

Hazardous Goods



DÜPERTHAL

DÜPERTHAL Sicherheitstechnik GmbH & Co. KG
Mainparkstr. 6-10 · 63801 Kleinstheim
Tel. 0 60 27 / 403-0 · Fax 0 60 27 / 403-121
info@dueperthal.com · www.dueperthal.com
Fire protection rooms, hazardous materials storage, safety cabinets, environmental safety, fire protection

Fire Protection



Fire Protection



Teckentrup
Türen · Tore · Zargen

Teckentrup GmbH & Co.KG
Tel. +49 (0) 5246/504-0
Fax +49 (0) 5246/504-30
www.teckentrup.biz · info@teckentrup.biz
Fire protection doors and gates T30/T60/T90, security doors (resistance class WK 1 – WK 4), sound insulated doors (up to Rw 57 dB), bullet-proofed doors, smoke-proof doors

Hazardous Goods



Köttermann
Systemlabor

Köttermann GmbH & Co KG
Industriest. 2-10 · 31311 Uetze/Hänigsen
Tel. +49(0)5147/976-0 · Fax +49(0)5147/976-844
systemlabor@koettermann.de
www.koettermann.com
Hood equipment, laboratory furnishings, media connections (supply and disposal)


Fire Protection



JOO
detectomat

detectomat GmbH
An der Strusbek 5 · D-22926 Ahrensburg
Tel. +49(0)4102/2114-60
Fax +49(0)4102/2114-670
info@detectomat.de · www.detectomat.de
Fire alarms, Fire warning systems, Fire protection, security systems

Fire Protection



WAGNER

WAGNER Group GmbH
Schleswigstraße 1-5 · 30853 Langenhagen
Tel. +49(0)511/97383-0 · Fax +49(0)511/97383-140
info@wagner.de · www.wagner.de
Hamburg · Berlin · Leipzig · Hannover
Mülheim/R. · Frankfurt · Stuttgart · München
Fire alarm systems and extinguishing technology, fire prevention, integral security



More companies to find:
www.GIT-SECURITY.com/buyers-guide


Fire Protection




ESSER
by Honeywell

Novar GmbH a Honeywell Company
Dieselstraße 2 · D-41469 Neuss
Tel. +49(0)2137/17-600 · Fax +49(0)2137/17-286
info@esser-systems.de · www.esser-systems.de
Fire alarm systems, security systems, voice alarm

Industrial Safety



Plant Safety



Fire Protection



HEKATRON
Ihr Partner für Brandschutz

Hekatron Vertriebs GmbH
Brühlmatten 9 · 79295 Sulzburg
Tel. +49(0)7634/500-0 · Fax +49(0)7634/6419
info@hekatron.de · www.hekatron.de
Fire alarm systems, Smoke switch systems, Smoke alarms, Safety linkage systems

Industrial Safety



EVAC+CHAIR

Evac+Chair International Ltd
Tel +44 (0)121-706-6744
www.evacchair.co.uk · info@evacchair.co.uk

Sales, Service & Training
c/o ESE International BV, DG Veldhoven
Tel. +31 (0)402553700
Tel. +49 (0)6238 984 6810 (Germany)
info@ese-int.nl



Plant Safety



PEPPERL+FUCHS

Pepperl+Fuchs GmbH
Lilienthalstraße 200 · 68307 Mannheim
Tel. 0621/776-1111 · Fax 0621/776-27-1111
fa-info@de.pepperl-fuchs.com
www.pepperl-fuchs.com
Security sensors, inductive, capacitive, opto-electronic and ultrasonic sensors, vision sensors, identification systems, interface modules

ABUS Security-Center	39, 54	GarrettCom	51	Pivot3	6
ADT Security	10, 39	Genetec	49, 53, 56	primion	10, 48
American Fibertek	49	Geutebrueck	42	Quadrant Security Group	8
American Science & Eng.	11	HeiTel	54	Salto Systems	11
Apollo Fire Detectors	41	HID Global	6	Samsung Techwin Europe	26, 53, 54, 60, Inside Front Cover
Arecont Vision	Outside Back cover	IMS Research	6	Sanyo Europe	58
ASSA ABLOY	46	IndigoVision	39, 59	SeeTec	24, Title Corner
Avigilon	7	IQinVision	8	Sicura Systems	49
Axis Communications	54	Kentec Electronics	9	Sicurit Alarmitalia	27, 44
Basler	8, 62	L-3 Communications	53	Siemens Building Technologies	8, 18, 33, 38, Front Cover
Bosch Security Systems	11, 29, 34, 47, 49, 61	LEGIC	5	Siquira	53
BSIA British Security Industry Association	9	March Networks	10	Suprema	51
C-Tec	6	Messe Frankfurt New Era Business Media	37	Surveon	8
Dallmeier	54	Milestone Systems	39	Talk- A- Phone	39
deister	3	Mintron Enterprise	31	Tyco Security Products	11
Epoc Messe Frankfurt	30	Mobotix	9	VIDEOR	53
Evac+Chair	35, 40	Morpho Detection	10	Videotec	9, 45
eyevis	23, 28	NEDAP AVI	47	Winkhaus	21
FFT Future Fibre Technologies	11	NEDAP Security Management	8		
Fiera Milano	29	NICE Systems	53		
Fujifilm	13	ONVIF	10		
		Optex Security	39		

IMPRINT

Published by

GIT VERLAG
Wiley-VCH Verlag GmbH & Co. KGaA
A Company of John Wiley & Sons, Inc
Boschstrasse 12
69469 Weinheim · GERMANY
Tel.: +49 (0) 6201 606-0
Fax: +49 (0) 6201 606-791
info@gitverlag.com · www.gitverlag.com

Managing Directors

- Christopher J. Dicks
- Bijan Ghawami

Publishing Directors

- Dr. Heiko Baumgartner
Tel.: +49 (0) 6201/606-703
heiko.baumgartner@wiley.com

- Steffen Ebert

Tel.: +49 (0) 6201/606-709
steffen.ebert@wiley.com

Sales Managers

- Regina Berg-Jauernig
Tel.: +49 (0) 6201/606-704
regina.berg-jauernig@wiley.com
- Katina Leondaris
Tel.: +49 (0) 6201/606-734
katina.leondaris@wiley.com
- Dr. Michael Leising
Tel.: +49 (0) 36 03/89 31 12
- Manfred Höring
Tel.: +49 (0)61 59/50 55

Editorial

- Matthias Erler
Tel.: +49 (0) 6723/9 94 99 82
matthias.erler@wiley.com

Editorial Assistant

- Nina Esser
Tel.: +49 (0) 6201/606-761
nina.esser@wiley.com

Production

- Christiane Potthast
- Andi Kettenbach (Layout)
- Claudia Vogel (Sales Administrator)

European Representatives

- Dave Harvett, Direct Media
Tel.: +44 (0) 121 705 2120
daveharvett@btconnect.com
- Oliver Haines, Impressive Marketing
Tel.: +44 (0) 1743 369611
impressive.marketing@virgin.net

Bank Account

Commerzbank AG Darmstadt, Germany
Account No. 01.715.501 00
Routing No. 508 800 50

GIT SECURITY is published 6 times per year.

Subscription 2011

6 issues 72.00 €, single copy 14.50 € plus postage. Pupils and Students receive a discount of 50% at sight of a valid certificate. Subscription orders valid until cancelled, notices 6 weeks before end of the year. Subscription orders can be revoked within 1 week in writing. Dispatch complaints are possible only within 4 weeks after publishing date.

The publishing house is granted the exclusive right, with regard to space, time and content to use the works/ editorial contributions in unchanged or edited form for any and all purposes any number of times itself, or to transfer the rights for the use of other organizations in which it holds partnership interests, as well as to third parties. This right of use relates to print as well as electronic media, including the Internet, as well as databases/data carriers of any kind.

All names, symbols etc. mentioned and/or printed in this issue may be registered trademarks of their respective owners.

Print run: 20,000

Cover Page Layout

Elli Palzer · elke.palzer@wiley.com

Printed by

pva Druck und Mediendienstleistungen GmbH
D-76829 Landau/Pfalz

Printed in Germany
ISSN 2190-4367

Leading the **way** in **Mega**pixel video

Cutting-Edge **Innovations**

Superior **Performance**

Broadest Selection of **Megapixel** Cameras



 **Arecont Vision**
megapixel technology...
beyond imagination

+49 (2045) 41337-23
dach.sales@arecontvision.com
arecontvision.com
MADE IN THE USA