

WILEY

VOLUME 17
SEPTEMBER
2020

3

79 824

GIT

MAGAZINE FOR SAFETY AND SECURITY

SECURITY

EMEA

Security for Logistics

Special Focus Fire Protection

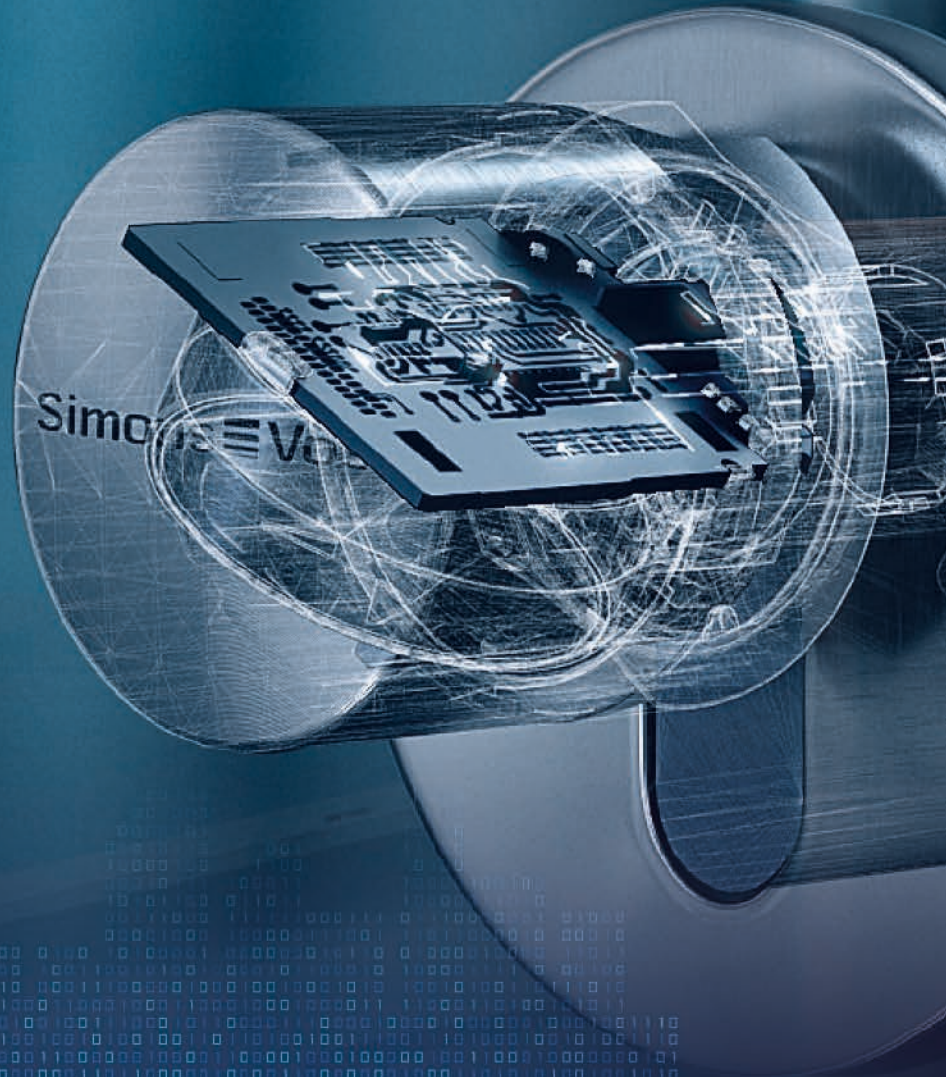
Safe City

Industrial Safety

Stadium Security

Access Control Solutions

COVER: SimonsVoss
FROM A START-UP
TO A BIG PLAYER



WILEY

How secure is your security?

In an age of state-sponsored hacking and increased cyberattacks, trust is crucial. Your physical security equipment is a potential entry point to your critical infrastructure – and not every manufacturer has your network’s best interests at heart.

At Genetec, we place the emphasis on transparency and trust – and select our partners accordingly. It allows our users to focus on what really matters: the successful operation of their business.

Flying under VFR

In aviation, when you cannot rely on radar and other instrumentation, you have to fly under VFR, under visual flight rules.

Everybody faces these kinds of challenges in the middle of the Covid-19 pandemic when there is this constant feeling of uncertainty that follows us through our private and business lives. What is the best approach to master these challenges and plan for the future?

In aviation terms: You are forced to fly under visual flight rules. Do the first things first and do not speculate what will be in three months. We have decided to do our homework first and make sure that you, dear reader, get all the information you need to do your job in security and safety better. This is why we have taken numerous measures to ensure that the dispatch of our magazines works smoothly, and the content is available online, too.

All issues of our B2B magazines from Wiley are available online and free of charge. If you go to the magazine sections of our websites and enter the code 247 in the field for the 'subscription number', you can read your favorite magazine or newspaper from your home office 24 hours a day, 7 days a week. In this issue you will find a lot of information about 'return to work' if the situation in your country and your organization allows it.

In November, we will host a special kind of virtual event: The Wiley Industry Days from November 16 to 19. The visit for you as a reader of GIT SECURITY is free of charge. In this way, we are making our contribution to

the exchange between communities in the different areas, presenting strong products - and accompanying the show, live online presentations will be set up. In a first step, we want to limit the event to an exclusive circle of providers, top players in their fields - also to make your visit easy to organize and to keep it clear. Who should definitely be there? You are welcome to write to us your suggestions (git-gs@wiley.com).

We all miss the personal contact to our authors, partners and readers. We all have experienced that Microsoft Teams meetings are a valuable tool, but they cannot replace the personal talk. Very often the message between the lines and the talk at the end of a meeting are the source of new ideas and plans. The casual meeting over a coffee may lead to new business and solve problems. Having said this, I am afraid that we won't see shows happening in the next months or if they happen, they might not be successful.

The strength of a good trade show is - as described above with - their networking power with personal contact. If they cannot happen, it is better to move forward with virtual conferences and one-on-one talks via phone or conferencing tools. Virtual conferences, where the emphasis is on distributing information and content, will work, but do not expect too much from business match making platforms and chat rooms. People have discovered that they can conduct their meetings from their living rooms, but buyers and sellers will conclude that it is difficult to do their business remotely. All the new instruments can help to bridge the gap until the world has recovered from Covid-19 but, truth be said, we will have to wait for exhibitions and business meetings to come back and to fly under visual flight rules until then.

Enjoy reading this issue and stay safe!

Heiko Baumgartner
For Wiley's Safety and Security team

25 YEARS*



COVER STORY

20

From a Start-Up to a Big Player
SimonsVoss



12

Per Björkdahl
Onvif



14

Daniel Müller
McDonald's Germany

MANAGEMENT

3 Editorial

6 News

INTERVIEW

12 **Open Source Development**
A Q&A with Per Björkdahl, Chairman of the Onvif Steering Committee

14 **I'm Lovin' It...**
Security Management at McDonald's

EVENT

18 **Paris Hosts Safety**
Expoprotection 2020 Preview

COVER STORY

20 **From a Start-Up to a Big Player**
In its jubilee year, SimonsVoss is well equipped for the future

COVER STORY

SECURITY

INNER COVER

25 **State of the Art**
Salto Neo Cylinder for Enhanced Wireless Access Control

ACCESS CONTROL

28 **Key Intelligence**
How Intelligent Keys Unlock Security and Efficiency Improvements in the Leisure Sector

ACCESS CONTROL

31 **Seamless safety for ATEX environments**
STid's RFID Readers Enable Access Control Solutions in Sensitive Areas

SPECIAL FOCUS: TRANSPORT

32 **Good For The Goods**
A Deep-Dive into the Security of the Logistics Sector: Transport Logistics Security

NETWORK SOLUTIONS

36 **Save Time**
PoE Network Interface Solutions

PANDEMIC SOLUTIONS

38 **AI To The Rescue**
Technology is the Public Health Response to COVID-19

SPECIAL FOCUS: STADIUMS

40 **Above the Roof**
Hikvision and ClearView Provide Upgraded Video Monitoring Solution for Ipswich Town FC



Welcome to the knowledge age. Wiley builds on its 200-year heritage by partnering with universities, businesses, research institutions, societies and individuals to develop digital content, learning, assessment and certification tools. Wiley continues to share and deliver the answers to the world's challenges helping you to further your mission.





20

Bernhard Sommer
SimonsVoss



54

Denis Schäfer
Dräger



Warren Moyle
Apollo

Malav Bhatt
Siemens

Matthias Wolff
Lupus

56

SECURITY SOLUTIONS

42 One For All
An Open Platform Team Member Boosts the Initiative

44 No Sin City
Examples of Successful Security Deployments in Cities

47 Help to Save Lives
Raytec and Oxehealth Monitor Patient's Vital Signs

48 Anonymous Crowds
Enabling Next Generation Security for Smart Cities with Intelligent Lidar

50 Survival At The Edge
Spotlight on an Italian Perimeter Security Equipment Manufacturer Cias

SAFETY

52 LiDAR At Its Best
Smart Building Security and Personal Safety

54 The Right Fit for Maximum Protection
Lightweight Respiratory Protection During the COVID-19 Pandemic

FIRE PROTECTION

56 3 x 3 Questions
Fire Detectors

58 Check out the Czech
Fire Protection for Ostrava's Residential Buildings

60 Champions League on Campus
Transparent Integration of Fire and Smoke Protection at Football Club FC Bayern Campus



#StayAtHome

Use our free ePaper!
www.git-security.com/magazine
Enter number 247

www.GIT-SECURITY.com
REGISTER NOW for our free **NEWSLETTER**

- SECTIONS**
- 06** Security News
 - 63** Company Index | Imprint
 - 64** BusinessPartner
 - 67** Off the Record
Volker Wagner

Sicurezza 2021 Will Take Place

Sicurezza, the European exhibition of reference for security and fire protection systems that will take place at Fiera Milano from 17 to 19 November 2021, is gearing up to consider sector development during its next edition, positioning itself as a platform for discussion and innovation with which to assess the challenges posed by current scenarios and understand their reach and consequences. According to the latest data from ANIE Sicurezza, 2019 closed with roughly 4 percent growth for the sector, slightly down on the previous year's +7 percent. The annual trend, however, is the result of two very different half-year periods, the first characterised by decidedly positive results, the second seeing various segments in decline. The dip in the security market thus began prior to COVID-19, though in annual terms the industry appears to have grown. It is with awareness that the journey towards Sicurezza 2021 begins. The exhibition will take place in a little over a year's time and will allow visitors to understand how current evolution has changed the sector and its professionals, which challenges have been won, and which still lie ahead. www.fieramilano.it



Genetec with Bosch MAP 5000 Integration

Genetec announced the latest deep integration to result from its enduring partnership with Bosch Security Systems. Users of the widely deployed Bosch MAP 5000 intrusion alarm panels can now directly connect to Genetec Security Center through the Intrusion Manager, combining intrusion, video and access control into one intuitive interface. Facility and security managers have traditionally been required to manage intrusion settings and alarms manually through a keypad or via a separate system. However, integration with Genetec Security Center ensures operators can monitor all intrusion events on dynamic maps alongside other security data such as video footage or access control records. This provides a fuller real-time understanding of what is happening in the facility so that organizations can react faster and contribute to more efficient day-to-day operations. www.genetec.com

Counter Terror Expo Will not Take Place in 2020

As a result of the ongoing impact of the COVID-19 pandemic, including the introduction of government regulations and public health directives, Counter Terror Expo (CTX), Ambition, World Counter Terror Congress (WCTC) and its co-located events will no longer take place at ExCeL London on 8-10 September 2020. This postponement and rescheduling covers the following events: Counter Terror Expo, Ambition, World Counter Terror Congress, Forensics Europe Expo, Ifsec International (organised by Informa Markets), Firex International, Safety & Health Expo, Facilities Show, Intelligent Building Europe, Workplace Wellbeing Show. The decision been made in an effort to ensure the health and safety of exhibitors, speakers and visitors, while the trajectory of the pandemic remains unclear. The next edition of these events will be hosted at ExCeL London on 18-20 May 2021. They will still take place alongside the Informa Markets events including IFSEC International. www.ifsecglobal.com

Patol Appoints New Sales Director

Patol recently announced the appointment of a new Sales Director. Iain Cumner will be taking over from current Sales Director Kelvin Miller, who is retiring from the business later in the year. Cumner joins the business with extensive experience in security, fire and building management systems. Starting out his career with an apprenticeship in electronics with Marconi, Cumner moved into integrated security systems in 1989 with Card Key Systems, one of the first large scale manufacturers of access control systems in the UK. Since then he has worked for companies ranging from Caradon Trend and Control Systems International to G4 Technology and Frontline Security. Cumner joins Patol from Johnson Controls where he most recently worked in developing framework agreements with Tier One construction companies for specification of fire, security and building management systems. The timing of the appointment is part of Patol's commitment to succession planning, with current Sales Director Kelvin Miller retiring from the business later in the year. www.patol.co.uk



Loxal Gains Two New UK Patents

During the corona virus lockdown, Loxal Security kept installing and supplying its Intelligent Digital Access Control System, IDACS, to a diverse range of clients. Now, the company has gained two new UK Patents for their key safes. The key safes enable clients to control access with keys being securely stored on site; users requiring access are given unique, temporary, or permanent codes. Key holder journeys are vastly reduced, giving significant cost savings, as well as improving clients' carbon footprint. With an uptake in demand it's timely for Loxal to have also gained two new UK Patents for IDACS Key Safes. www.loxalsecurity.com

Zaun: Protecting Injured Birds at Wildlife Hospital

Mesh once used to protect people and world leaders at the G8 summit and London 2012 Olympic games is now being used to protect injured birds at a wildlife hospital. The material was manufactured by Zaun and supplied to the cause



for free. Lower Moss Wood Wildlife Protecting Injured Birds is an educational reserve and wildlife hospital. Neil Hughes, System Channel Manager at Abloy UK, was encouraged to volunteer at Lower Moss Wood Wildlife Hospital, ran by Ray Jackson MBE, and asked if he could build an aviary for larger birds such as buzzards so they could free up space in the hospital. "When Ray first gave me the task to make a vermin proof duck enclosure, Zaun fencing came straight to mind as I knew they could at least advise," Hughes commented. "When I first spoke to Alastair Henman MD and explained what I was doing, he had no hesitation offering the ex hire stock for such a worthy cause. A couple of other calls and we had it delivered in a matter of days. Myself, Ray and staff at Lower Moss cannot thank Zaun fencing and their staff enough for the generous contribution." www.zaun.co.uk



CUSTOMIZED
FIRE
SIGNALING
SECURING YOUR
EVERYDAY
PATH

DESIGNED WITH MAXIMUM FLEXIBILITY, FIRESWITCH OFFERS MORE PROGRAMMABLE NACS, WITH ADDED LABOR SAVING FEATURES – INCLUDING REMOTE MONITORING AND DIAGNOSTIC REPORTING.

SOPHISTICATED SIGNALING POWER

 Altronix
FIRESWITCH[®]
THE NETWORKED NAC POWER EXTENDER



MADE IN THE U.S.A. | LIFETIME WARRANTY

– VISIT ALTRONIX.COM FOR OUR COMPLETE LINE OF FIRE SOLUTIONS –

Milestone Systems Announce New CEO

Milestone Systems has announced that its Board of Directors has appointed Thomas Jensen as Chief Executive Officer who will assume the role on October 1, 2020. "Milestone is a strong company with a strong leadership team. Adding Thomas' broad experience in strategy and execution puts us in a great position to achieve our goal of long-term sustainable growth for our community partners and for Milestone Systems," said Lau Normann Jørgensen, Chairman, Milestone Group. With his background in Hewlett-Packard and most recently in IT integrator company Bechtle, Thomas Jensen is an executive leader with a strong global footprint that includes P&L responsibility for international businesses in software and hardware. He has deep business experience with IT and technology, and an understanding for the dynamics of business communities, technology partners and integrators.



www.milestonesys.com

Barox Signs Distribution Agreement with NIT for META Region

Barox has announced that they have signed a distribution agreement with NIT an Ingram Micro Company ("NIT"), a leading regional value-added distributor of IP surveillance and physical security solutions in the Middle East, Turkey and Africa ("META") region. With this agreement, Barox's full range of switches for video, media converters, and IP extenders will now be available through NIT across META. Barox products have been developed for video transmission and have proven themselves in the region for years, in the most demanding network security projects. www.barox.ch



Messe Frankfurt Defers Secutech Vietnam

As a result of flight restrictions impeding business travel to Vietnam, Messe Frankfurt New Era Business Media Ltd has announced the postponement of two of its trade fairs in the country. With a respective focus on automotive services and the safety and security industry, Automechanika Ho Chi Minh City and Secutech Vietnam, originally scheduled to take place concurrently at the Saigon Convention and Exhibition Centre this summer from 20 – 22 August, will be rescheduled to 2021. Restrictions that came in to force in March to prevent the spread of COVID-19 continue to effect international travel to Vietnam. Logistical uncertainty has therefore hampered planning for the diverse international contingent of both events, with less than two months remaining before the trade fairs were scheduled to open. The 2021 fair will take place from 30 June – 1 July at the Saigon Convention and Exhibition Centre. secutechvietnam.tw.messefrankfurt.com

Intelligent Video Analytics: How it Can Help Retailers Through Tough Economic Times

Many retail stores have found themselves in uncharted territory over the past few months and would have welcomed if there had been a way for their security cameras to help address these new challenges during the pandemic. The key is to invest into new technology today to have the flexibility when it's needed the next time. With this in mind, Security & Safety Things (S&ST) outlines a few ways in which smart surveillance technology can support both short-term reopening measures and provide additional long-term benefits to retailers such as:

- Optimize inventory in stores and warehouses
- Increase sales conversions
- Enhance customer experience
- Streamline workflows

Video Analytics

Video analytic applications can optimize operations by analyzing customer behavior and providing actionable insights to retail management. By assessing the amount of time customers spend in a store, managers can better plan for high traffic periods – increasing the number of staffed individuals or high-demand inventory items.

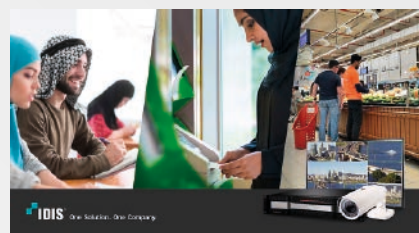
If a store features a coffee shop, retailers are able to gauge the additional amount of time customers might linger in a shop, allowing them to plan for busy periods or potential bottlenecks. This also enables retailers to deploy other measures to optimize the shopping experience for customers.

A security camera, which was previously only able to provide video data, can now also enable retailers to better understand their customers shopping habits and optimize business operations – offering far more than just a security or health safety tool. These cameras effectively become IoT sensors that can today be used for COVID-19 related topics and tomorrow be refitted to further improve building safety and visitor experience.

www.securityandsafetythings.com

Idis Targeting Video Projects in Resilient Middle East Market Sectors

Idis is targeting video projects in resilient Middle East market sectors – including banking, grocery retail, and education – as it looks to build on recent successes



delivering compliance-driven solutions. Despite continuing disruption and uncertainty in the world economy, the company says the outlook is positive in the region as it supports its systems integration partners to focus on both resilient sectors and markets showing continued growth. The Korean video tech leader, which is known for its end-to-end solutions, highlights opportunities for video tech projects in the education sector where it already has successful deployments in KSA and Kuwait. "The sector continues to expand through investment from private equity firms and government infrastructure funding, as well as international higher education institutes expanding their presence in the region," says Jamil Al Asfar, Senior Sales Manager at Idis Middle East & Africa. In the banking sector, major investments in more robust surveillance infrastructure over the last three years have been driven by compliance pressure, as banks look to meet more stringent government standards. www.idisglobal.com

Onvif Publishes Release Candidate for Profile D

The draft specification of the Onvif Profile D Release Candidate, which covers interfaces for access control peripherals, is now published for Onvif members. This newest profile candidate is designed to provide Onvif interoperability for peripheral devices such as locks, credential/biometric readers, PIN-pads, license plate recognition cameras, door phones, sensors and displays. Using Profile D, a peripheral device can pass credential identifiers to a securely located Profile D conformant client, such as an access control unit or management software. The client or controller, which stores access rules, schedules and credentials, can then take the access decision and send a command back to the peripheral device to grant or deny access, display a message or request additional input such as a PIN code. Having sensitive information on a separate controller in a secured area enhances security. Communications between the device and client are secured using Onvif security protocols such as TLS.

www.onvif.org

Euralarm Welcomes Vanderbilt as New Member

Following a decision of its Board, Euralarm has welcomed its newest member Vanderbilt. The company will join the Security Section of Euralarm. The Security Section represents the intrusion, access and video sector and is key stakeholder in organisations such as Cert Alarm, Cen-Genelec, IEC and the European Commission. Together with a diverse number of stakeholders in Europe, the section collaborates on finding solutions for today's as well as tomorrow's challenges for security in a digitized world.

www.euralarm.org

Twenty Years of RF

Narda Safety Test Solutions has developed into a significant supplier of test equipment for electric, magnetic, and electromagnetic fields (EMF) over the past 20 years. The company was founded in 2000 by the USA-based L3 Technologies, New York. The product range for the EMF Safety sector includes broadband and selective measuring devices, measuring stations and personal EMF monitors. The company's EMC test receivers find use both in industry and in test laboratories. The receiver modules are mounted directly on the antennas. The Radman device is a personal radiation monitor that gives reliable, timely warning of electromagnetic radiation. The highly specialized SRM (Selective Radiation Meter) can automatically and reliably determine which cellular network provider is causing the highest exposure level at a given time. The IDA quickly and simply traces rogue transmitters and eliminates interference. The Signalshark is a measuring instrument with a POI (Probability of Intercept) and detects hidden signals right down to a signal duration of 3.2 μ s with 100% probability to identify and direction find rapid hopping signals and radar. Together with the ADFA 2 automatic direction finding antenna, it forms a compact solution for precision direction finding of signals from 10 MHz up to 8 GHz.

www.narda-sts.com



Idis Supports European Integrators to Secure Video Projects

Idis is working with systems integrators across Europe to identify and secure video projects in post-Covid growth sectors, including hyper-scale and co-location data centres, residential construction, logistics and healthcare. Integrators affected by project delays or cancellations in their established markets are looking to diversify their customer portfolios says the company. In the latest analysis released online it highlights sectors that will offer significant prospects for new video installations and system upgrades, as customers look to expand, to drive efficiency, or to introduce Covid-safe site control measures. "After a number of project successes across the UK, mainland Europe and the Middle East we are seeing opportunities in some exciting areas," said James Min, Managing Director at Idis Europe.

www.idisglobal.com



PureTech Technology Partnership with Milestone VMS

PureTech Systems announces its product integration with Milestone VMS and participation in the Milestone Marketplace. PureTech's integration with Milestone enables alarms generated from PureActiv AI Video Analytics to be sent directly into the Milestone Video Management System (VMS). "This integration leverages our near-zero false alarm outdoor detection and classification capability into Milestone's world-class VMS" said Larry Bowe, President of PureTech Systems, "Adding PureTech's AI-based video analytics with Auto-Verify into a Milestone system enables customers to secure their perimeters without adding staff. The automated AI verification feature ensures security personnel are only presented with real perimeter breaches. No additional staff is required to monitor for perimeter breaches."

www.puretechsystems.com

Ifsec Firex Egypt Moves Dates

After consultation with industry partners and taking into account the latest government guidelines and travel restrictions, the organizers have decided to move the dates of Ifsec Firex Egypt 2020. The event will now take place on 1 - 3 November 2021 at Egypt International Exhibition Centre, Cairo. Top priority is to provide a safe environment for everyone involved; customers, attendees, partners and colleagues. As the only trade show in the region dedicated to this industry, a significant proportion of participants are international, therefore with the current restrictions and the global situation, it is in the best interests of all participants to move the dates of the show. The show organizers will continue to liaise directly with all relevant authorities while monitoring and complying with guidance from the World Health Organization and the Government of Egypt.

www.ifsecandfirexegypt.com



iLoq and Sato Continue Cooperation

According to the signed, extended framework agreement, iLoq will supply its S5/S10 digital locking solutions and software to at least fifty percent of Sato's rental properties and common areas nationwide through contract partners. "The agreement further deepens the good cooperation and is a continuation of the transfer of locks in existing sites to this system. This also reflects the fact that they have been really satisfied with our products," said Kai Patja, iLoq Finland's key account manager. According to Sato's Director Aaro Aalto: "Our residents benefit from the security of the iLoq locking system, as lost keys do not weaken the security of their home. Access rights to a lost key can be removed quickly without the need to change or re-serialize locks." In addition, the supplier's digital access management solutions offer significant lifecycle savings for the buildings included in Sato's contract. www.iloq.com

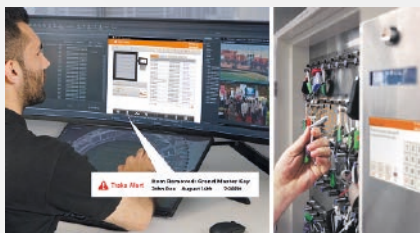


iLoq Partners with Hoas

iLoq has signed a framework agreement with Hoas, the Foundation for Student Housing in the Helsinki Region. With the signing of the agreement, iLoq's locking solutions will continue to play a large role in Hoas' real estate portfolio of rental homes which are equipped with digital locking and access management solutions. iLoq delivers self-powered locking and access control solutions for Hoas properties. The agreement aims to increase collaboration between iLoq and Hoas and will make the company's solutions available to more tenants. www.iloq.com

Traka Integrates with Honeywell Enterprise Platform

Traka announces the integration of its key and equipment management solutions with the Honeywell Enterprise Buildings Integration (EBI) R600 building management system, extending its reach to help secure, manage and audit physical keys and equipment across a business. The integration allows administrators to enrol Honeywell EBI users into the Traka database, grant access levels to key cabinets and intelligent lockers, and receive Traka events and alarms in the integrated EBI platform. This improves day-to-day operational monitoring and provides heightened asset control via Traka's key and equipment management solutions. The integration allows administrators to receive real-time state change information from the latest version of TrakaWEB to the Honeywell EBI R600 platform, to track the removal of keys or assets in real time for improved asset return assurance. The benefit of asset return assurance means that users cannot leave the premises if they have not returned the keys or assets they removed earlier. Administrators of the system can also grant or revoke access to premises based upon the current status of the keys or assets held by the user. www.traka.com



Intersec Saudi Arabia moved to March 2021

In view of the worldwide situation caused by the Corona pandemic, and the prohibitions on events and travel restrictions associated with it, Messe Frankfurt Middle East has decided, jointly with its partners – ACE Group – AlHarithy Company to move the 4th edition of Intersec Saudi Arabia from 1-3 September, 2020 and it will now be held from 15 – 17 March 2021, at the Riyadh International Convention & Exhibition Centre. The new dates also apply to the conferences that are held alongside Intersec Saudi Arabia. This decision to organize the show in March 2021 has also been taken after the Saudi government authorities' announcement that the organization of exhibition and conferences can start from 15 September, 2020 and international in-bound and out-bound flights will resume from 1st August, 2020. www.intersecexpo.com

Wisenet Video Surveillance Systems Protect E-Bikeport Charging Stations

E-BikePort has chosen Hanwha Techwin as the single source provider of the video surveillance systems to be integrated with its autonomous, sustainable charging stations for electric-assisted bicycles and scooters. E-Bikeports provide a convenient way to re-charge light electric-assisted vehicles, as well as other electronic equipment, such as mobile phones and tablets. In addition to the recharging sockets, secure lockers are available to temporarily store helmets and clothes, whilst internet access is provided by an integrated Wi-Fi kiosk. Powered by solar panels, the environmentally friendly ports can be quickly and easily installed in virtually any location. Three vandal-resistant Wisenet XNF-8010RVM fisheye cameras are integrated into each e-BikePort. The HD 4-megapixel cameras are powered by the e-BikePort's solar panels during the day and by battery at night, as is the installed Wisenet QRN-410S network video recorder (NVR). www.hanwha-security.eu



Inter Airport Europe 2021

Mack Brooks Exhibitions has announced that inter airport Europe will be rescheduled once more after the last date change announced in April. The 23rd edition of the event will take place from 9 – 12 November 2021 following extensive conversations with all exhibitors, visitors and partners over recent weeks who have expressed their preference to hold the next show as early as possible in November 2021, in order to avoid clashes with other events and holidays. Speaking about the announcement, Nicola Hamann, Managing Director of Mack Brooks Exhibitions, said: "Following the consideration of feedback we have received from all stakeholders after the postponement in April, we have been able to secure the earliest slot to hold inter airport Europe in November 2021 and are pleased to announce this new date. The November slot is not an ideal solution for us; however, one week ahead of the previous announcement fits a lot better into the overall event schedule. All outdoor exhibitors who have concerns over the weather in November will be able to present their equipment indoors in 2021." www.interairporturope.com

TDSi Expands its Logistics Team

Integrated security manufacturer TDSi has appointed Keith Beech to its Logistics Team, based at the company's headquarters in Poole, Dorset. Keith's expertise in managing the shipping and movement of TDSi's integrated security products, to partners and customers around the world, is particularly important during the post-COVID-19 restrictions and transition to the new normal. With a distinguished supervisory and managerial career in logistics for technology businesses, Keith has the expertise and experience to fully support the company's expanding international operations. Keith said, "One of the key things that drew me to this role is working with the highly talented and dedicated team at TDSi. The Poole facility encompasses many key parts of the company, including product development and the business operations, which means our logistical team is a focal point in delivering our combined expertise to the market. I am looking forward to being part of our continued success and to supporting our partners and customers."



www.tdsi.co.uk

Panasonic Secures Schools

Panasonic i-PRO Sensing Solutions Corporation of America announces the launch of i-PRO Secure Campus. The new program makes it easier for K-12 schools and school districts to discover, procure and implement the security solutions they need to help protect students, staff and visitors. "We share with our customers the ultimate objective of providing learning environments where students and teachers feel confident that they are safe and secure," said Bill Brennan, President, Panasonic i-PRO. "Our new i-PRO Secure Campus program addresses the long-standing challenges that K-12 schools face when looking to implement best-in-class security and safety solutions by streamlining and accelerating all of the processes required – from securing grants to consultation, system specification, installation and after-the-sale support."

<https://business.panasonic.eu>

Covert Long-Range Infrared Technology

360 Vision Technology, the UK manufacturer of rugged PTZ and thermal imaging cameras, is experiencing a marked increase in customer requirements for its 'No glow' long range infrared technology. "In recent months we have been approached by a number of CNI and high security customers who had recognized the need to up-grade and increase their security coverage," says Adrian Kirk, 360 Vision Technology's Strategic Accounts Director. 'No glow' infrared illumination (940nm) is a special type of infrared that eliminates the typical red-glow (850nm) of standard infrared lighting by operating at a higher frequency. This type of lighting is typically used in transportation to ensure that drivers of vehicles or trains are not distracted. The company's recent development work has increased the useable range from 100 to 300 meters.

www.360visiontechnology.com



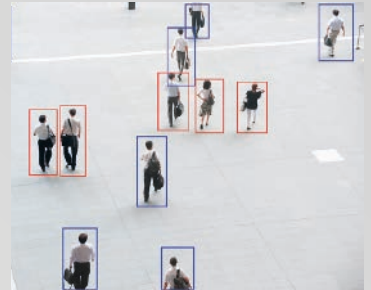
Euralarm: Cybersecurity for Radio Equipment Directive

The Radio Equipment Directive looks to be prepared for an update where cybersecurity requirements will become part of the directive and with that part of the CE-marking. Euralarm stated that while it supports the need for increased cybersecurity, the fire and security industry will preferably support a horizontal cybersecurity regulation. Nevertheless, if embedded in the RED, Euralarm wants to ensure that the technical aspects addressing cybersecurity are relevant for wireless fire safety and security equipment and can work for manufacturers and service providers. Euralarm advises manufacturers of wireless equipment falling under the RED to follow current developments. The company also aims to make sure that additional legislation that could result from the current investigation will be feasible for manufacturers.

www.euralarm.org

Hanwha Techwin Introduces Social Distance Measuring Application

Hanwha Techwin has launched AI deep learning-based video analytics Social Distance Measuring application which, in a COVID-19 affected world, helps businesses to implement their social distancing policies. Developed by A.I Tech, Hanwha Techwin's technology



partner, the server-based Social Distance Measuring application is able to accurately measure the distance between people in a camera's field of view and will generate an alarm if social distancing rules are not being complied with. Users can also be alerted if the number of people within an area exceeds a specified threshold. Compatible with all Wisenet cameras, the application has been developed for use in workplaces, such as offices and factories, as well as a wide range of other indoor locations including art galleries, museum and places of worship. The Social Distance Measuring application performs equally well in outdoor environments and offers a highly effective social distancing implementation tool for public transport environments and in city centres where local authorities are looking to monitor and manage the crowds which may gather in popular locations.

www.hanwha-security.eu

outdoor video surveillance
Expert

NSGate

- Outdoor access Nodes, Outdoor UPS
- Off-grid solar powered CCTV, 4G LTE
- Industrial PoE, Thermoelectric assembly

SICHERHEITS
EXPO Stand E16



www.nsgate.eu | sales@nsgate.com | +7 495 139 6903

INTERVIEW

Open Source Development

A Q&A with Per Björkdahl, Chairman of the Onvif Steering Committee

As Onvif has announced it is implementing open source for its network interface specifications for physical security technology, GIT SECURITY has gathered a few questions towards what it means for Onvif, their members and the security community. Per Björkdahl, Chairman of the Onvif Steering Committee spoke about how their move will streamline administrative and collaborative processes while also leveraging the collective ingenuity of the global developer community.

GIT SECURITY: What is open source and what exactly does this mean for Onvif?

Per Björkdahl: At its base definition, open source refers to something, usually computer code, that is publicly accessible and can be shared and modified to fit specific applications or use cases. Onvif network interface specifications, which are the main documents that define the language and methods by which devices and clients can communicate with one another, are open standards that have always been publicly available. Historically these specifications were developed and maintained within the Onvif membership environment. By adopting an open source methodology, companies outside of Onvif, and potentially developers from many different companies and industries whom we have not reached before, will have the ability to provide input on our specifications as part of the open source development process.

On a more practical level, this also means the opportunity to significantly streamline the administrative and collaborative processes of creating our network interface specifications. By moving the work of the maintenance and management of the network specifications onto GitHub, an online open source

development platform, this will automate much of the detailed, process-oriented work that is required to produce technical specifications. Both the greater openness of open source and the automation offered by GitHub will undoubtedly spur greater feature interoperability and innovation and allow us to provide new specifications faster to meet existing and future market demands.

Onvif is known for its specific profiles for video streaming, access control and more. How does this impact the development of future profiles?

Per Björkdahl: This move to open source development is limited to the engineering of the Onvif network interface specifications, so profiles are not included in this strategy, and profile development will remain under the purview of Onvif member companies. Our six existing profiles that address video streaming, storage and retrieval, quick installation and access control configuration will remain unaffected, as will our upcoming release candidates, or draft profiles, for Profile D for access control peripherals and Profile M for metadata. However, as profiles are groupings of functionalities that originate in the Onvif main network

interface specifications, we widely expect that specification contributions realized via open source will help in some way to support the development of future profiles.

Will this have any impact on the Onvif conformance process or Onvif membership?

Per Björkdahl: It's important to note that the addition of open source development will have no impact on the Onvif product conformance process, Onvif membership nor anything to do with the development of the test tools used to determine product conformance to Onvif profiles. The addition of open source development affects only one part of the work we do at Onvif, and that is the development of network interface specifications for IP-based physical security products.

While anyone will be able to contribute to Onvif network interface specification development using GitHub, only Onvif Full and Contributing members will continue to have early access to and the ability to provide guidance on future new profiles introduced by Onvif. A company still needs to maintain Onvif membership at the full, contributing or user level to declare Onvif-conformant

products, to use Onvif conformance tools, and to use the Onvif logo and Onvif profile logos.

How will this new initiative impact the way systems integrators and end users utilize Onvif?

Per Björkdahl: From a logistical standpoint, nothing will change in the way that systems integrators and end users use Onvif-conformant products to assemble best-of-breed solutions for their customers or own organizations. We do anticipate that the streamlined specification engineering process via GitHub will enable us to bring new developments to the marketplace more quickly and be able to more easily incorporate external

contributions from software engineers and developers from industries across all sectors, including IoT, Artificial Intelligence, cloud services. The end result will be greater flexibility in the types of solutions that are interoperable with one another for a wider range of solutions that both systems integrators and end users can benefit from.

What else can the industry expect to see as a result of this initiative?

Per Björkdahl: Open source development is a trend that has proven to be successful and makes specification contributions easier and more efficient. The benefits have been realized by countless organizations who have realized increased

collaboration, additional transparency and new perspectives that have allowed their organizations to thrive and expand. With a solid footing in the security industry, Onvif's interoperability specifications have the capability to both provide and capitalize on opportunities in other technology sectors, providing a bridge between security technology and building automation systems or other ancillary systems that depend on the standardization of data for basic interoperability.

CONTACT

Onvif
San Ramon, USA
Tel.: +1 928 395 6773
www.Onvif.org



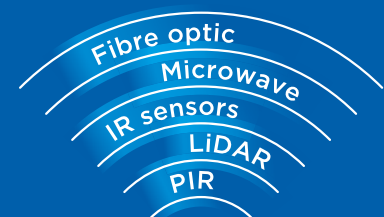
**DON'T WASTE TIME
ON EMPTY THREATS**

Get the power of sensor-led visual verification

Empty threats waste time and missed threats could have disastrous consequences.

For enhanced security, it makes sense to bring the power of two technologies together. Our intelligent sensors can detect without being influenced by light or weather conditions and integrate with video systems to provide visual verification. Because vision can't do it all, it makes sense to have sensor-led visual verification.

**For more information
visit www.optex-europe.com**



Expert in sensing technologies

INTRUSION DETECTION | TAILGATING DETECTION
VEHICLE DETECTION | PEOPLE & VEHICLE COUNTING
ENTRANCE DETECTION



Daniel Müller, Department Head Security at McDonald's Germany

INTERVIEW

I'm Lovin' It...

Security Management at McDonald's

Everybody loves a burger, you might think. And the number of guests that visit McDonald's every day suggests that is true: after all, there are approximately 1,500 restaurants in Germany where two million customers place their orders every day. What security issues does that generate – and how is security managed? Matthias Erler of GIT SECURITY spoke with Daniel Müller about this. He is Department Head Security at McDonald's Germany.

Mr. Müller, you head up McDonald's Security Department. Could you first of all outline how this department fits into the McDonald's corporate structure, and say for which jobs and which areas you are responsible?

Daniel Müller: The Security Department is part of the National Operations division and is responsible for all aspects of the physical security of almost 1,500 restaurants and various administration buildings in Germany and Luxembourg. The department creates risk analyses, chooses the appropriate organizational and technical risk reduction measures, produces security and training plans, advises the Leadership Team and franchisees in security-relevant matters and maintains contact with security authorities, associations and networks.

Is there also an overall global security department at McDonald's?

Daniel Müller: In principle, the company security of McDonald's is decentralized. The company has therefore implemented its own security department in many countries, which looks after the comparable tasks while taking the local security situation and culture into account. This

is also the case in Germany. But there is a global security department that provides guidelines on some aspects.

Among other appointments, you were with the German Army – specifically, you were also part of the field intelligence group. What experience that you gained there can you put to good use in your daily work today?

Daniel Müller: The army teaches you to develop many important abilities when dealing with other people (teamwork, the ability to motivate others, strategic thinking ...), but also when dealing with challenges, and ultimately how to apply them. These abilities, regardless of whether they are soft skills or ways of thinking, are still of use to me today in my daily work.

Is there something like a McDonald's security philosophy that forms the basis of your job?

Daniel Müller: It is extremely important for us to be prepared for all possible situations. The department therefore places great emphasis on anticipating potential dangers so that we can implement suitable preventive measures.

Let's take a look at the ubiquitous subject of Corona: what security-related problems has this caused your company? And what critical decisions and special measures have you taken as a result?

Daniel Müller: McDonald's serves two million guests in around 1,500 restaurants each day. Just this fact alone creates a broad range of risks. When the government ordered a nationwide lockdown at the beginning of the crisis, we operated our restaurants almost entirely just as a McDrive. This made a significant improvement in the general security situation first of all. The 24/7 stores, however, posed a new problem as they had to be temporarily closed and protected, for example by an intruder alarm. When the measures were relaxed and the restaurants could open again, the security situation returned to normal very quickly. But the checks by our staff to ensure compliance with the social distancing regulations regularly presented them with special difficulties as not every guest was willing to comply. New standard operating procedures (SOPs) were quickly established to be prepared for such situations, and the staff were correspondingly trained by our management.

New: Incedo™ Business

The access
control you
demand, the
flexibility you
need

You formed your own task force for this ...?

Daniel Müller: The task force had already been a permanent element of McDonald's Germany for many years. And an Incident Management reporting system was also integrated a few years ago. This means that every type of incident is reported via the system and subsequently evaluated by readiness teams. If an event then has the potential to develop into a crisis, the task force will be assembled to quickly determine the course of action together with all those involved.

Apart from the Corona virus and its consequences, what are the cur- rently most important security-related projects that you are dealing with at McDonald's in Germany?

Daniel Müller: We are currently evaluating various different technical risk reduction measures to ensure that we have the best possible protection. Amongst these are, of course, intruder alarms, emergency call systems, access control and CCTV. We're also updating all our instructions, SOPs and handbooks to prepare employees for current possible risk situations. We are correspondingly developing new training material and methods that primarily make use of digital media.

What are the typical incidents and how do staff deal with them?

Daniel Müller: The security situation is different in each location. There will inevitably be all sorts of security incidents wherever millions of people from all walks of life come together. Our employees mostly have to deal with antisocial behavior, so they receive training on how to deescalate situations. And in cases where the staff can apply their own solution, they subsequently report the case to the management. But if the situation develops badly, the

restaurant management must be involved, and the police will be called if there is a situation that still can't be brought under control. Those directly involved then make a report to the headquarters.

Have you already had to deal with robberies or even a shooting rampage?

Daniel Müller: Robberies are very rare, and the chances of experiencing a shooting rampage are absolutely minimal. Very few of our restaurants are the victims of robberies. And in the long history of McDonald's in Germany, there have only ever been two rampage events.

How are your restaurant staff trained?

Daniel Müller: Apart from the compulsory training elements, we also offer them two different one-day seminars. Firstly there are seminars that prepare for the difficult behavior of people in the restaurant – this is primarily concerned with learning de-escalation measures. Secondly, we also offer seminars that explain what is best to do in the event of a rampage or a terrorist attack. These courses are held both in groups and also online. We will be further expanding our range of online courses in future. Apart from training videos that demonstrate the correct behavior in relation to the event in the most memorable way, we are currently developing an educational app that presents security training content in a light-hearted way. The staff can then test how much of the content they have absorbed in a competitive quiz format. And to increase and maintain the motivation, prizes can be won according to the number of points scored.

Do you get a good general idea of the current security situation through the digital tools and the involvement of so many staff? How does that work exactly and how are you able to use it?



Download a free
introductory guide

campaigns.
[assaabloyopeningsolutions.eu/
incedo-business](https://assaabloyopeningsolutions.eu/incedo-business)

Experience a safer
and more open world

Daniel Müller: A precise view of the situation is essential to be able to provide corresponding support. We developed a web application at the end of 2014 together with the Corporate Affairs department and our service provider Smart Data that unifies incident reporting as well as incident and crisis management. The guidelines and the specific knowledge of the affected departments is digitally displayed, and an application has thereby been created that provides added value for the restaurants. The staff can send a report via the telephone hotline or directly via the corresponding web app as soon as an incident occurs. This enables all the relevant departments to be informed in real time and their staff can quickly provide support to the local staff. This tool has been well accepted and the usage and reporting figures are increasing each year. A fundamental factor for this is, of course, the continuous and repeated maintenance of risk awareness within the restaurant management. The reports and the individual steps taken are stored within the tool as incident reports and are then available for later evaluation. This provides the Security Department with an overall picture of the security situation that can be looked at in detail at any time.

What types of security technology do you use (video surveillance, video analysis, fire protection, intruder detection, etc.)?

Daniel Müller: Numerous technical systems are installed in the restaurants. Apart from mechanical solutions that protect against burglary, our restaurants also have fire and intruder detection systems, emergency call systems and CCTV. And, in addition, when we are building a new restaurant or modernizing an older one, we also include CPTED measures that help to make particularly risky locations safer.

And how is your cooperation with the authorities and the police?

Daniel Müller: We maintain close contact with numerous police forces to receive the latest information and to support their investigations. We let our security concepts be regularly checked by the police for their relevance and applicability, in particular if they contain technical risk reduction measures.

You have a mixture of your own restaurants and those belonging to franchisees – does that lead to differences in the security strategies? You generally prefer to follow uniform standards?

Daniel Müller: More than 90 % of our restaurants are operated by franchisees as partners of McDonald's and, as independent businessmen and women, they are fundamentally responsible for setting up their own business practices. There are, however, a number of safety and security standards within the McDonald's system that are also mandatory for our franchisees.

Which aspects of security will you be looking at in the foreseeable future?

Daniel Müller: Providing the current situation (Corona virus) dies down again, I assume that the security situation will return to normal in and around the restaurants. This will inevitably require some resources. Apart from that, we are continuing to work on a uniform CCTV standard, new training policies and methods, on the educational app and we will be putting out some tenders for security technology.

CONTACT

McDonald's Germany

Munich

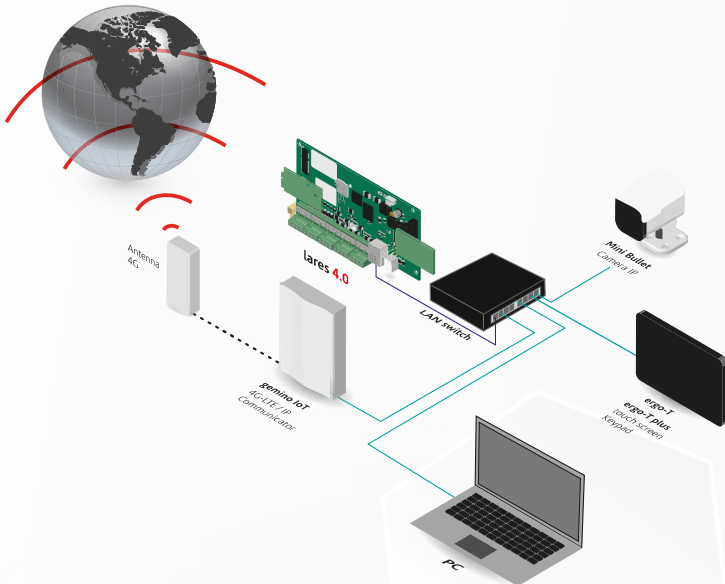
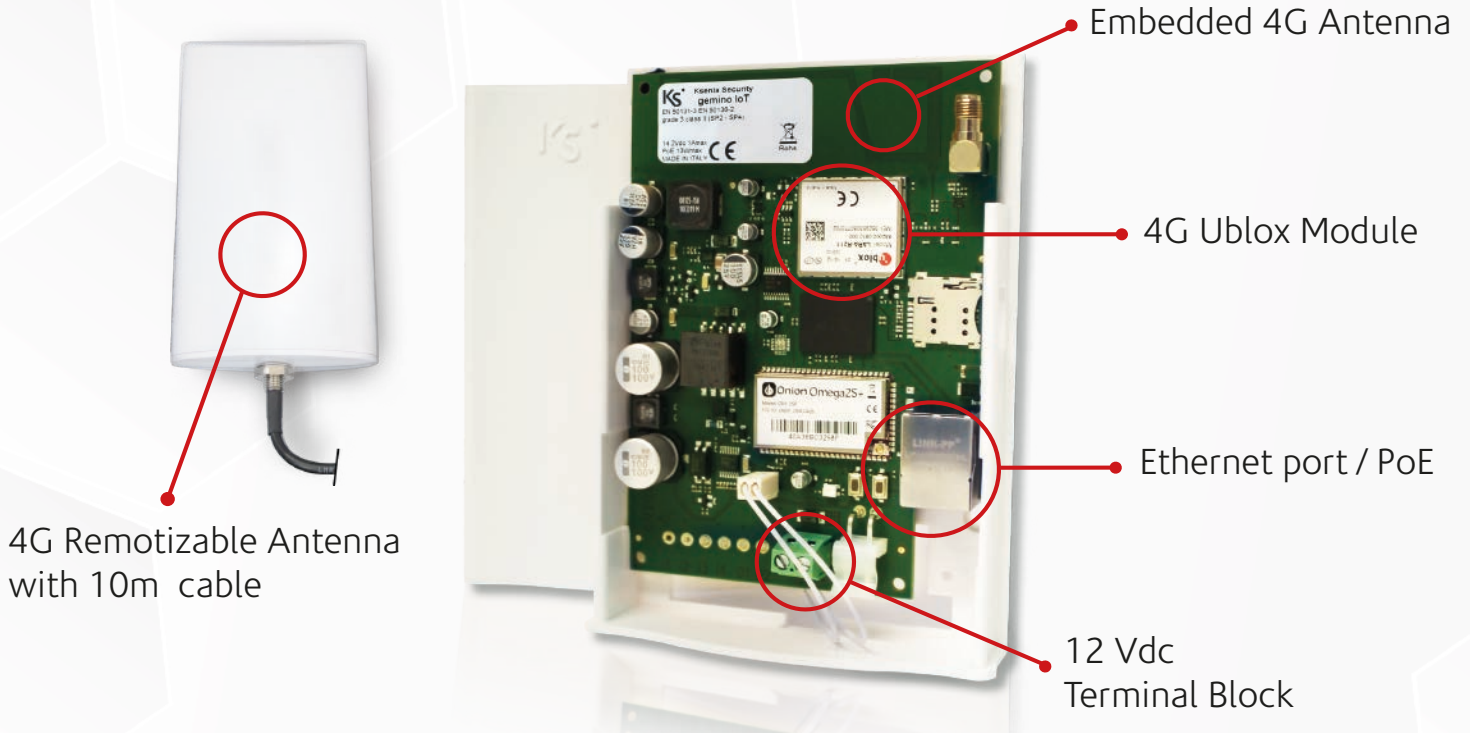
Tel.: +49 89 78594110

security@de.mcd.com

www.mcdonalds.com



gemino IoT 4G-LTE/IP comunicator



ROUTER MODALITY

It is possible to use gemino IoT as a **ROUTER** in the absence of wired internet connection. In this mode, gemino IoT implements a DHCP server that automatically provides and assigns IP addresses to each device on the same network.

Paris Hosts Safety

Expoprotection 2020 Preview



The Risk Prevention and Management Industries are joining forces this autumn, with a focus on resilience and crisis management as we move forward prevention and security are now more of a key priority

Expoprotection 2020, the exhibition for risk prevention and management, will take place in Paris – Porte de Versailles – from 3–5 November 2020. The Covid-19 crisis has sharpened the focus on the challenges of risk prevention facing organisations: Expoprotection will be the highlight of fall, reuniting industry suppliers and buyers who will find all the answers to their topics.

Leading Players

“Expoprotection will be the stand-out European event this autumn. the exhibitor offer will likely centre on europe, due to the travel restrictions affecting certain countries in other areas. however, all the

sectors will be represented, with market leaders in each having confirmed their attendance. and we’ve also received some very positive signs from visitors, as according to a Vovici survey conducted in June 2020, 97% of visitors to Expoprotection 2018 are planning to come in 2020!” explains Jean-François Sol Dourdin, Show Director.

Concrete Solutions To Covid-19 And Health Risks

A number of exhibitors are offering solutions to tackle health risks in response to the Covid-19 pandemic. In the ‘Protection’ sector, for example, protective mask manufacturers will be exhibiting, as will safety visor manufacturers and

breathing equipment manufacturers. There will also be several frontline companies in the ‘First Aid & Rescue’ area. In the “Prevention@Work” sector, which primarily addresses the challenges of quality of working life, remote work, crisis management, hygiene and health, exhibiting companies will include many options. So, with all these solutions and an offer tailored to the global situation, Expoprotection 2020 will be an ideal opportunity to prepare companies to face various risks highlighted during the current health crisis.

The First ‘Phygital’ Expoprotection

Expoprotection is currently working on a digital version of the show with a view to



for organisations than ever before. The issues presented by the uncertain global situation have heightened their need for solutions to an increasing number of more complex risks.

simultaneously offering two complementary solutions, Expoprotection Onsite + Expoprotection Online, so exhibitors and visitors have the option of participating both, in person and/or remotely ('phygital' = physical+digital). The majority of visitors surveyed plan to use both versions, combining a trip to the show in person with a visit to the digital platform. Expoprotection Online will cater specifically for participants' three main expectations: sourcing solutions and partners, access to the content of talks and workshops and one-to-one business meetings. Expoprotection Connect, the show's business meeting programme, will offer participants the option to meet online or in person at the show.

Safety and Health Measures

Reed Expositions France, organiser of Expoprotection, has made the health and safety of customers, partners and colleagues its top priority. Expoprotection will therefore adhere strictly to the health protection measures recommended by the French government and the WHO to limit the spread of Covid-19.

The measures we are taking include:

- Managing and regulating visitor flows
- Making the use of face masks compulsory
- Alcohol-based sanitiser gel available in all areas of the show
- Regular disinfection of spaces
- A layout adapting spaces and conference rooms to social distancing norms

- Regular food hygiene safety checks
- And communication before and during the show to ensure compliance with safety rules.

Please note that all precautionary measures are currently subject to a certification process by a leading inspection and certification company.

CONTACT

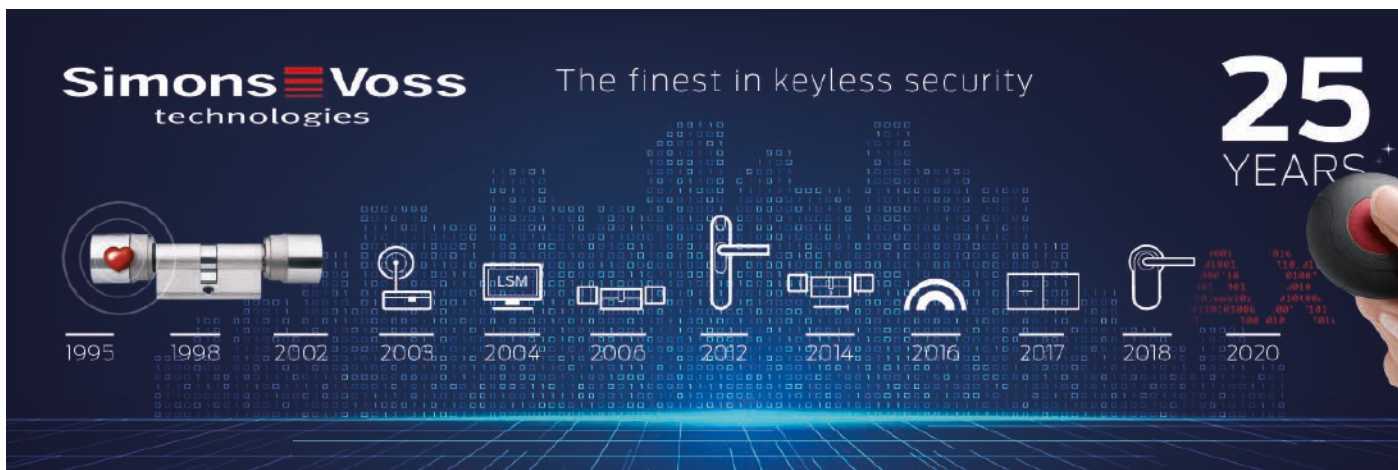
Expoprotection

Paris, France

Tel.: +33 1 47 56 21 21

serviceclient@expoprotection.com

www.expoprotection.com



COVER STORY

From a Start-Up to a Big Player

In Its Jubilee Year, SimonsVoss Is Well Equipped for the Future

SimonsVoss Technologies celebrates its 25th anniversary in 2020. The company has expanded its production facility in Osterfeld in Sachsen-Anhalt in its jubilee year with a new building of around 2,400 m² (26,000 ft²). The pioneer of digital locking technology will employ more efficient, faster and more flexible processes here in future.



The introduction of new products – among them the SmartHandle AX range – and the expansion of already successful existing product ranges such as MobileKey had long brought production capacity at the location in Osterfeld, originally opened in 2013, with around 1,700 m² of production and storage area to its limit. The new facility was opened one month ahead of schedule and increases the total available area on the site to some 5,600 m².

Optimized Production Processes – Better Delivery Performance

The broad spectrum of products – a core feature of SimonsVoss – and the resultant changing product mix brings some special challenges. Head of Operations Peter Heimbürge: “The limited amount of space available made us very creative and inventive sometimes so that we

could present a tailored solution on time to the customer. It was not possible simply to introduce new methods and technology.”

The additional space will now permit us to introduce more efficient, quicker and more flexible processes in the production. Optimized production processes also allow shorter lead times and better delivery performance. So amongst other things, a new production line for lock cylinders has been implemented in the new building as a pilot project that can be adapted later to other products. Peter Heimbürge: “We are continuing our course to further improve quality and to bring further innovations to our customers.”

Optimum Working Conditions

“More space for our employees, with corresponding shorter distances and quicker

reaction times as well as direct communication all bring big advantages in our daily work”, explains the head of operations. Around 160 people are employed at the Osterfeld site. More staff rooms, a larger canteen and a much improved car park will provide our staff with even better facilities in future and will further improve the working atmosphere. Peter Heimbürge continues: “This expansion means that the location is in great shape for the future and equipped to optimize the production processes.”

CONTACT

SimonsVoss

Unterfoehring

Tel.: +49 (0)89 992 28 0

marketing@simons-voss.com

www.simons-voss.com

“You Need an Overall System to be Successful”

25 Years of SimonsVoss: a Review and a Preview From Company Founder Ludger Voss and CEO Bernhard Sommer

GIT SECURITY: Mr. Voss, what pushed you to form a company 25 years ago?

Ludger Voss: I already knew Oliver Simons through our studies together in Aachen. I studied Electrical Engineering, Oliver studied Business Administration. I worked as a system engineer at Siemens, Oliver as a consultant at McKinsey. After visiting the Security trade fair in Essen in 1994, he wanted (together with the subsequent SimonsVoss Chief Executive Bernd Dietel) to invest in electronic access control. Oliver showed me the various systems that in those days were contained in electrical control cabinets, and I thought to myself, “That can be a lot simpler ... Why not build everything into a compact system in a standard format? Low energy, wireless, installed in minutes. “

So the basic idea existed – what happened next?

Ludger Voss: We got a large loan from the bank, rented a small office in a loft in Schwabing, brought in the excellent

system architect and strategist Herbert Meyerle, whom I knew very well from my time at Siemens, and started up in November 1995. At first we weren't successful. The digital mortise lock was too expensive and there were too many variants because of the complexity of the doors. Then in the fall of 1997 we had the idea that saved us, to further miniaturize the system and integrate it into the knob of the locking cylinders. The first successful installations were made in 1998. The dealers immediately saw an enormous potential in the digitalization of mechanical lock cylinders and that's when the success story started.

How would you summarize the jubilee year for the company?

Ludger Voss: Never give up ... the road to success is difficult. It is not sufficient for our idea just to develop one product, rather you must develop an overall system. You need solutions for every type of door in our industry; you need transponders, programming devices, network



Company Founder
Ludger Voss



CEO Bernhard Sommer

components, management software. And in addition, we had to develop an entirely new market before we could achieve our first turnover. But a long-term contribution to our success has been made by our core of long-serving employees who have kept the know-how in the company and who themselves have made many innovations possible.

A look to the future: in which direction is the technology developing?

Ludger Voss: In our opinion, the development is heading towards universal connectivity. Components must be able to communicate amongst each other, with cloud-based services, with central

administration points, and increasingly also with smartphones. Many things are made simpler for the user by this. At the same time, however, the requirements for protection against hacker attacks are increasing rapidly. SimonsVoss product developments meet these concerns. We have been incorporating so-called Secure Elements for many years, just as used in banking applications, in all our new developments. Universal connectivity is provided by additional NFC, BLE, and Wireless Networking interfaces. The 'Internet of Things (IoT)' is not new for us, by the way: we have been networking locking components since 2003 wireless-ly and contact them over IP networks.

Mr. Sommer, how has the young market for digital locking cylinders of those days developed?

Bernhard Sommer: What originally really was a technology-heavy idea – namely to digitalize locking cylinders – has developed over the past 25 years into an industrially influenced market. SimonsVoss has not only been involved in this development, but has also largely driven it forward. We are continuing seamlessly on this course today as part of Allegion and are very successful.

What prospects does digital locking technology show for the next five to ten years?

Bernhard Sommer: We expect increased networking of digital locking systems within security or building management systems. And we expect that Internet, web and cloud applications will become more widespread and provide significantly simpler operation for the users.

And how about the touchy subjects of IT security and data protection?

Bernhard Sommer: The requirements placed on the technology with regard to the security of data protocols, data access and protection against hacking are undoubtedly growing. Digital locking systems are an ideal solution when it comes to data protection within a company. They can help to ensure that the requirements of the GDPR, for example regarding access to the personnel or IT departments, can be complied with.

What challenges does the industry face in your opinion?

Bernhard Sommer: The subject of the lifecycle cost – the operational cost over the entire product life – is also coming into the foreground. This means for us that the even higher expectations will be made of the products with regard to the product life and also the maintenance intervals. A focal point for our product development teams is achieving a long life with extremely low operational costs. We want to provide additional benefits for our customers in this way.

And finally, what changes are you preparing for in the near future?

Bernhard Sommer: We expect standards in building technology to become widespread over the next five to ten years. We will see to what extent these standards can be applied to digital locking technology. Apart from that, we continue to ensure top customer service and support for our local sales partners with very quick reaction times and rapid solution proposals. ■

Wiley Industry Days

WIN DAYS

16.–19. November 2020



**JETZT
REGISTRIEREN
REGISTER NOW**
www.WileyIndustryDays.com

Virtuelle Show mit Konferenz, Ausstellung und Networking für die Branchen der Automatisierung, Machine Vision und Sicherheit.

Virtual show with conference, exhibition and networking for the automation, machine vision and safety & security industries.



Miryam Reubold
Tel.: +49 6201 606 127
miryam.reubold@wiley.com



Jörg Wüllner
Tel.: +49 6201 606 749
joerg.wuellner@wiley.com



Dr. Timo Gimbel
Tel.: +49 6201 606 049
timo.gimbel@wiley.com

How Wireless Locks Help a European University



Upgrading security and access technology makes us safer and has a real impact on the day-to-day working lives of everyone who comes into contact with it. Wireless locks are a faster and more cost-effective way to extend an access control system. A recent modernization project at Luminy University, France provided the opportunity to upgrade campus security with more than 400 Aperio online wireless locking devices. The facility management team now controls everything in real time – legacy and new Aperio-enabled doors – from their existing ARD interface. Aperio cylinders, escutcheons and complete locks can be installed on both exterior and interior doors, from certified fire doors to meeting rooms, labs and offices; wooden, glass or aluminum. The locks are compatible with Euro, French, Finnish, Scandinavian and Swiss lock profiles. Integration with an existing system can be online or offline.

www.assaabloyopeningsolutions.com

Moxa Helps Customers Shore Up Industrial Cybersecurity to Get Back to the New Normal

Moxa has introduced its new industrial cybersecurity solution, EtherCatch IEC-G102-BP Series IPS, EtherFire IEF-G9010 Series next-generation firewall, and Security Dashboard Console security management software. This solution will shore up network defense for critical manufacturing and infrastructure, empowering business owners to get back to the new normal, quickly and safely. As companies restart production after their factories have stood idle for several weeks or even months, they quickly realize that it is difficult to operate production processes that were designed to maximize efficiency. To ensure social distancing guidelines are adhered to, processes are being rearranged to reduce tasks that require multiple personnel to complete. Connecting more field devices, aggregating data, and performing remote monitoring to ramp up production have become the new normal for companies. However, a rise in interconnectivity between Operations Technology (OT) and Information Technology (IT) also increases the attack surface and therefore introduces potential cyberthreats to the previously isolated industrial networks. Ultimately, the challenges that businesses face to reopen quickly and safely become more and more difficult.



www.moxa.com

Intelligent Project Planning Tool Shortens Planning Time

By launching the new AI-supported ‘Creator’ planning tool, Mobotix enables planners and architects to optimize video surveillance system planning in minutes instead of days. Using artificial intelligence and deep learning algorithms, the tool can generate schematics, proposals and designs based on parameters and reduce or eliminate buffers, estimation and miscalculation. “We are initially offering our partners the basic version of Creator free of charge. A software download is not necessary – planning is simply done directly via a browser. Even the basic version enables comprehensive planning and is suitable for 300 projects per year with up to 65 cameras per project,” explains Thomas Gladel, training manager at Mobotix. The Creator automatically calculates camera placement using AI algorithms. The building or site plan serves as the basis, uploaded by the planner or architect, for example as a CAD file. Even the mounting accessories, the required cabling, the network to be provided and the required storage capacities are determined.



www.mobotix.com

Oncam With New 360-Degree Camera Line C-Series

Oncam announced the introduction of its powerful and compact C-Series and the first two cameras of this line, the C-12 Indoor and the C-12 Outdoor Plus, both featuring a 12MP sensor and powered by Qualcomm Technologies. Designed to support mission-critical video surveillance and security deployments, the Oncam C-Series provides the performance, resilience, scalability, and ease of use required of advanced 360-degree fisheye solutions. Built on Oncam’s expertise spanning more than 15 years in 360-degree video technology, the C-Series delivers higher frame rates, crisp images and bandwidth reduction technology, increasing functionality, as well as ensuring the creation of products that are both intuitive and user-friendly. The Oncam C-12 cameras feature Oncam’s dewarping technology, seamless Onvif implementation, and integration with the major VMS platforms, with processing power from Qualcomm Technologies, that enables this next generation of high-tech video from Oncam.



www.oncamgrandeye.com

ID Solution for Employees and Visitors

HID Global has launched its Workforce ID platform that enables a seamless, effortless experience when using identity credentials to access physical and digital workplaces at an office, in the field or on the road. The new ISO27001-certified identity cloud service platform simplifies how employees access what they need to do their jobs, while solving workplace and visitor security, regulatory compliance and a variety of new business challenges as employees are returning to work. It provides several streamlined digital workflows, such as visitor self-check-in and rules-based access to buildings and IT resources according to employees’ modified work schedules. A Visitor Manager module includes the ability to use self-service badging kiosks. The Credential Manager and ID Badge Issuance module automates badging across the identity lifecycle including cloud-based onboarding, card printing and offboarding.

www.hidglobal.com



State of the Art,
Wireless Access
Control Technology



INNER COVER

State of the Art

Salto Neo Cylinder for Enhanced Wireless Access Control

Salto Systems has released the Salto Neo Cylinder – a new electronic cylinder that offers more features and better functionality than any other cylinder on the market.



Most Efficient and Convenient

The compact Salto Neo Cylinder is designed for doors where fitting an electronic escutcheon is not possible or required and can be installed on standard doors, server racks, gates, cabinets, electric switches, sliding doors and more. It's available in an extensive range of models to suit almost any kind of door – from Europe to ASIA to the Americas.

The new cylinder provides the most efficient and convenient way of securing your building and assets. The re-engineered clutch system design makes

efficient use of energy, dropping consumption to impressively low levels resulting in 100,000/130,000 cycles with just one set of batteries. System standby power consumption is reduced, which extends the electronic cylinder's battery life.

The IP66-rated Salto Neo Cylinder is weather-resistant, making it especially suitable for the outdoors in even the harshest of environments. Encapsulated safely inside the tough Neo Cylinder exterior is the absolute latest in electronic lock technology. Certified to the highest security standards, and pursuing

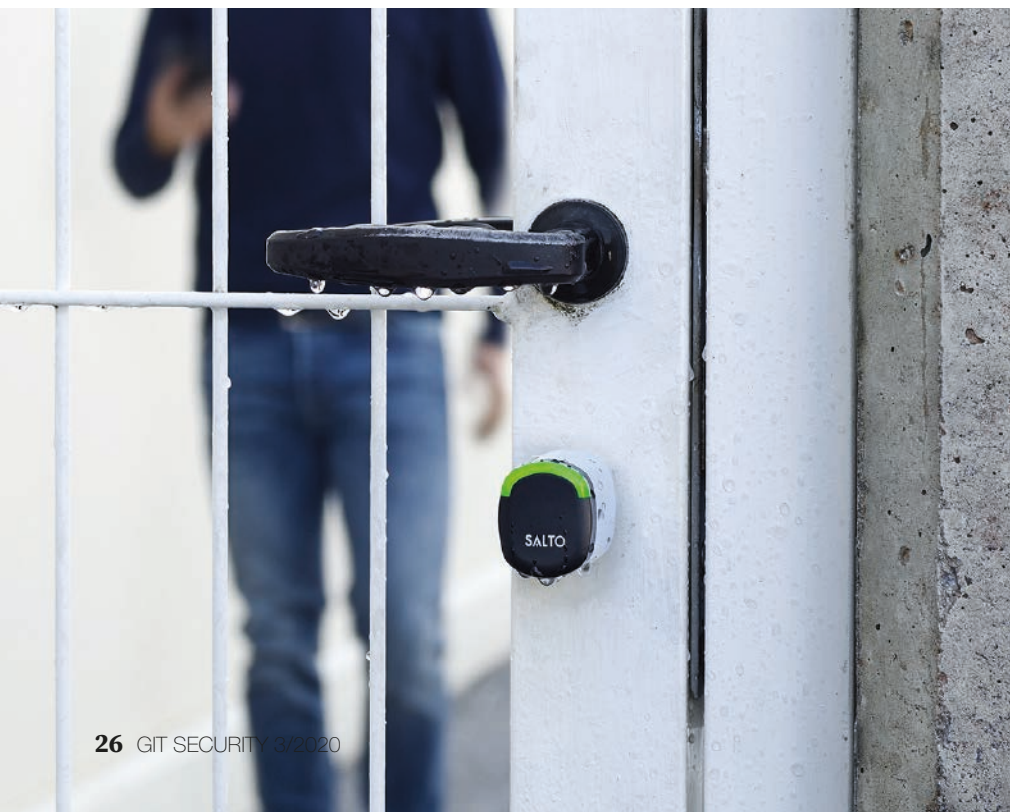
ever-higher quality and reliability, the Salto Neo Cylinder is designed to provide users the finest in safety and security.

Greater Control with Less Effort

The Salto Neo Cylinder offers value far beyond security, however. Of course, upgrading a mechanical door to electronic access control enhances security, but the Salto Neo Cylinder provides greater control over the door by offering end-users access to audit trails, reports, alerts and so much more. Using smart keys and mobile technology with the Salto Neo Cylinder allows users to manage access rights – quickly and keyless – which is more secure than using mechanical keys. There is also additional value in the flexibility, convenience and operational efficiency provided by the Neo Cylinder's wireless technology.

Salto continues to release impressive technological innovations where connectivity between the door, user and system operations aids the growth of overall access control for any building application or access type.

“Salto's new Neo Cylinder technology allows us to introduce customers, systems operators and installers to new experiences and to connect keyless access where we couldn't have justified wiring a door before,” said Marc Handels, Salto Systems. “We've seen for years that electronic locking technology is an ecosystem that has continuous change and growth and we've had to consider how to best anticipate customers' needs and





recommend smart locking solutions that are easy to adopt and install. The Salto Neo Cylinder has more functionality and performance capability than any other cylinder on the market, allowing businesses to connect to their on-premises network via advanced SVN technology or the cloud with our Salto KS cloud-based access management platform.”

Switch to the Platform of Choice

Because the Salto Neo Cylinder is compatible with Salto SVN, Salto BLUENet Wireless and the Salto KS - Keys as a Service - cloud-based technology, it can be switched to any of Salto's technology platforms at any time without changing the hardware. This allows businesses to decide which technology fits better with their security, operations and IT needs.

The Salto Neo Cylinder adds Salto SVN-Flex technology, which increases the potential, efficiency and reliability of the Salto SVN, yielding better security, control and convenience for users and sites.

Salto JustIN Mobile technology is on-board every cylinder. This gives users and system administrators the capability to send or receive a mobile key to open any door or gate with an installed Salto Neo Cylinder with their iOS or Android Bluetooth or NFC-enabled smartphone. This adds incredible convenience and efficiency for end-users in the field which is where a Salto Neo Cylinder would most likely be used. JustIN mobile app capability also complements usage of

Salto's other management platforms: Salto SPACE data-on-card on-premise management software or the Salto KS cloud solution.

For any building, function or model, Salto offers the perfect electronic cylinder to fit any door and delivers an easy-to-use electronic locking platform that integrates all physical security needs through smart, wireless and battery-operated smart cylinders, giving operators all the latest user access information for virtually all of the doors in your facility.

Visit saltoneo.saltosystems.com to find out more about the Salto Neo electronic door lock cylinder features and technology.

CONTACT

Salto Systems

Oiartzun, Spain

Tel.: +34 943 344 550

info@saltosystems.com

www.saltosystems.com





Wireless access systems based on robust, key-operated locking allow staff to open doors, cabinets, windows and padlocks, indoors and outdoors, with a single programmable key

“Previously, the biggest problem was lost keys. Then the lock had to be replaced, which was expensive. With Cliq, it’s clear where our keys are.”

Michael Andréson, Operations and Security Officer at the State Maritime Museums, Sweden

ACCESS CONTROL

Key Intelligence

How Intelligent Keys Unlock Security and Efficiency Improvements in the Leisure Sector

Places of leisure, where we spend our downtime, are public by design. Unlike a bank vault or power plant, they actively invite visitors. You can’t just lock them down and hope no one turns up. Equally, to ensure user and property safety, access must not be a free for all. Managing risk – separating authorized from unauthorized people and locations – is part of every site manager’s daily routine. Intelligent locking makes this workload a whole lot easier.

Intelligent keys combine the powerful features of electronic access control with the convenience and familiarity of mechanical keys. In hugely diverse leisure settings across Europe, they already help managers do more with less.

Controlling Access to Outdoor Sites and Attractions

Obviously, for many leisure attractions, wired electronic security is not an option. Locations may be remote – far

beyond the reach of mains electricity, and assets themselves may be outside. Thankfully, cabling is not essential for effective intelligent access control. Robust, battery-powered locking, backed by intuitive admin software you can access from anywhere, matches or exceeds the functionality of traditional wired access control. Padlocks built to withstand climate extremes can integrate within a system exactly like standard interior locks.

Intelligent electronic key systems are also budget friendly. Making the switch from mechanical security is not an all-or-nothing decision. Intelligent key systems should let you roll out gradually as needs evolve and budgets allow. For example, the Llyn Brenig Reservoir and Visitor Centre in Wales attracts tens of thousands of tourists every year. Both mechanical and electromechanical locking protect a site which houses critical infrastructure and watersports facilities, with disparate security needs.

Electromechanical locking here brings long-term cost savings to the site owners Welsh Water, because locks no longer need to be changed when keys are lost – permissions are simply deleted from the system software.

At Twycross Zoo, it is simple for system administrators to issue time-defined user keys. These can permit vets or zookeepers access to enclosures for a specific time period outside regular hours, for example, in an emergency. When the period expires, the key no longer works and site integrity is automatically maintained.

Access Control in the Museum Sector

When Edvard Munch’s painting “The Scream” was stolen from an Oslo museum in 1994, thieves left a note which read: “Thanks for the poor security”. Securing museums – open spaces with priceless contents – presents one of security’s biggest challenges. Around 50,000



Security and access control in precious buildings, subtle but ever present, can be wireless and therefore without the invasive installation of cables

artworks are stolen every year, according to some estimates. Adding further complexity, many museums are located within historic properties. The building itself may be integral to the attraction and come with strict heritage protections. Any new locking installation must make minimal mess, and for this reason, wireless is increasingly the preferred choice.

Wireless access systems based on robust, key-operated locking, rather than

cards and other keyless credentials, combine a familiar technology (the metal key) with the intelligence to keep staff and collections safe. Carrying one programmable key able to open doors, cabinets, windows and padlocks makes the security team's rounds easier. It also minimizes the number of keys in circulation, with obvious security benefits. Companion software makes key tracking straightforward: you always know who exactly is carrying credentials, can refine or amend those permissions quickly and order a full audit trail on demand. And these locks are discreet enough not to negatively affect the property's appearance.

Museum Access Control in Action

London's Design Museum needed access control designed to protect high-value assets and exhibits. Devices here protect a contemporary site with three galleries, a restaurant/café and an events space, with 100 permanent staff and hundreds (sometimes thousands) of daily visitors. The building has multiple door sizes and must meet British Standards compliance.

Electromechanical locks now control access through 56 doors, forming part of a security ecosystem that incorporates traditional mechanical locks too. Using intuitive management software, security managers ensure every staff member accesses only the right areas. Contractors are issued with temporary programmable keys, which saves time formerly wasted by having to escort them around the building. The system the Design Museum chose – Cliq from Assa Abloy – also enables integration with third-party cloud-based solutions, for control via a single, central management interface.

Twycross Zoo uses a Cliq system to issue time-defined user keys, permitting vets or zookeepers access to enclosures outside regular hours



ASSA ABLOY
Opening Solutions

eCLIQ:

The key to electronic locking



eCLIQ is a durable and secure electronic locking system utilizing web-based software

campaigns.
assaabloyopeningsolutions.eu/ecliq

Experience a safer and more open world

The delicate balance between protecting a precious building and guarding its contents sets a major challenge. Security and access control must be “subtle, but ever present,” according to one former member of the Museum Security Network. Invasive installation, showy or inappropriately designed devices and components cannot be considered. This was the checklist facing France’s Musée Maurice Denis: the museum is inside a listed 17th-century monument, so they turned to Cliq access control technology for a solution.

Drawing on extensive experience in the heritage sector, Assa Abloy delivered

locking: Class 3. Yet the Vasamuseet’s access system must also allow 1.2 million visitors annually to move around freely while keeping exhibits safe. To upgrade an existing mechanical system, around 700 interior door cylinders were equipped with Cliq Remote electromechanical technology. Museum staff used to carry heavy chains with ten or more keys. Now facility managers can amend the access rights of everyone’s single key at any time, even remotely, using the Cliq Web Manager. It is easy to issue contractors such as carpenters with access rights scheduled to end automatically as soon as their work is complete.

burden of mechanical key management. Now, cleaners and maintenance workers carry an intelligent key which unlocks specific doors for a pre-defined time period. Using simple online admin software, site managers can immediately de-authorize and reissue a lost key or amend any key’s permissions. Generating a comprehensive audit trail – who accessed which lock, and when – takes a couple of mouse clicks.

The system also cut Festival Place operational costs. The electronics inside the locks are powered by the standard battery inside every key, not mains electricity. Installation was wireless, a huge



The Cliq electronic locking system from Assa Abloy provides the flexibility and security that leisure facilities need to cope with complex requirements

high security without disrupting the building aesthetics. Installation was easy and wire-free because encrypted electronics inside the system’s locks are powered by the standard batteries inside every programmable key. No further power supply is needed at the door. Around 70 robust, hard-wearing cylinders and padlocks now secure doors and windows inside and outside the main building; waterproof padlocks protect CCTV camera housings on the exterior. Every employee receives access to relevant areas via a single key, which administrators program with only the appropriate permissions.

Insurance compliance is another major concern in the heritage sector. Indeed, insurers for 17th-century warship Vasa demand Sweden’s highest level of

Security for Shopping and Indoor Leisure Sites

According to one study completed two decades ago, we spend 87% of our time indoors. The number is probably higher now – and includes a huge chunk of our leisure time. Large retail multiplexes like Festival Place in the UK are a popular destination. Here over 170 shops, a cinema, sports center and restaurants have an ever-changing roster of permanent staff, cleaners and out-of-hours contractors. Every person requires secure entry on demand. The public also needs open access for 18 hours every day.

Yet a single lost mechanical key could become a security problem for all users and tenants. Installing 100 Cliq electromechanical cylinders drastically cut the

saving on potentially expensive electrical work. At Festival Place and wherever people gather to enjoy leisure – indoors or outside – Cliq enables easy access control for all openings with just a simple, single, programmable key.

CONTACT

Assa Abloy Opening Solutions EMEA

Tel.: +49 30 8106 2970

thomas.schulz@assaabloy.com

www.assaabloyopeningsolutions.com

ACCESS CONTROL

Seamless Safety for ATEX Environments

STid's RFID Readers Enable Access Control Solutions in Sensitive Areas

Explosive environments require an access control system that complies with the requirements of ATEX standards. Three key issues dominate: ensuring the safety of sensitive areas, securing isolated workers and controlling authorized vehicles. However, the technological response must merge seamless security with fluidity of use. STid's underline focus is on the challenges of access control in securing sensitive areas in an ATEX environment.

Migrating Towards High-security Technologies

Applicable since 2006, the European ATEX directive 1999/92/EC requires the implementation of a risk analysis approach to guarantee the safety of people. Over time, some sites have installed various systems: keys, cards, which themselves use technologies such as magnetic stripes, Mifare chips, etc. The result is:

- Disparate systems
- A variable level of security
- Heavy day-to-day management
- Expensive maintenance costs

These systems must migrate to scalable, high-security technologies adapted to the needs of the field. As an example, with their latest deployment in the pharmaceutical industry, STid had to guarantee access security for visitors as well as for production operators. The aim was to provide a high security response in the ATEX universe.

In particular, chips such as the Desfire EV2 will produce greater levels of security comparable to the banking sector, more flexibility in key and file management and greater reading distances. Coupled with an end-to-end secure



STid RFID readers comply with ATEX and IECEx

architecture, the contract goal is then fulfilled!

Smooth Access for Production Operators

STid meets two fundamental industry requirements: safety and reliability. Our ranges of RFID readers comply with all international market standards: ATEX (EN60079) & IECEx certifications, European directives (99/92/CE and 94/9/CE). A sine qua none condition that guarantees the absence of any failure that could lead to an explosion!

This thinking has led STid to introduce UHF technology to manage the access of forklift drivers in ATEX zones. It's no longer just about identifying the Fenwick Truck with a simple ground loop detector. It is now the driver who manages the entrance. He offers out his card, without putting his foot on the ground. The traffic is now more fluid and safer. At the same time, another problem is being addressed: how to combine safety requirements with increased performance of logistical operations.

"We went into the field to be as close as possible to our customer's needs," explains Vincent Dupart, Managing Director of STid. "Our strength? Our ability to support manufacturers in the implementation of a contactless access control and identification solutions for any and indeed all challenging environments!"

CONTACT

STid
Greasque, France
Tel.: +33 442 126 060
www.stid-security.com





TRANSPORT LOGISTICS

Good For The Goods

A Deep-Dive into the Security of the Logistics Sector:
Transport Logistics Security

We are now quite used to ordering something online, and receiving it one or two days later, maybe a week later if it comes from further away. But have you ever given a thought to all the security measures that are necessary for that to happen? The whole process would be a lot less reliable without the complete palette of today's security technology being used along the route of our parcels. Let's take a closer look what those are.

Leaving IT security and encryption aside, subjects that could easily fill a complete issue of GIT SECURITY on their own, we're looking here at some of the elements that transport security encompasses: air freight and its supply chains, sea freight, sorting and subsequent transport to the customer. According to an estimate by the European Union, the theft of products moving in supply chains in Europe costs business

in excess of 8.2 billion Euro each year [1]. How these goods are stolen varies from one country to the next, and the thieves also have their particular favorite items in view in each region.

When goods do get stolen, there are 'hidden' additional costs beyond just their material value. Time and effort – possibly by external resources – are required to investigate when, where and how the loss occurred. Then there is cost

of the internal administration of writing those goods off, making a claim to the insurer and, hopefully, activating better security measures so that it doesn't happen again. So to simply calculate in a percentage of operating costs from the beginning as 'expected' is naïve to say the least. Far better would be to invest that sum in security measures that prevent the theft from happening in the first place.

Sea Transport

If you've ever stood on the dockside of a busy port beside a container ship, you would find it hard to believe that such a massive vessel could be at risk. The number of ship hijackings peaked ten years ago, but 162 ships were still hijacked last year, and not just off Somalia, so the problem hasn't gone away. Indeed, the techniques and equipment used to get on board are becoming more sophisticated. So, of course, are the countermeasures.

Without resorting to potentially lethal firearms, there are a number of solutions available to protect a ship against unwanted boarding. Perhaps the most 'James Bond'-like device is the long-range acoustic generator from Genasys that emits a highly directional and ear-piercing noise, which causes approaching raiders to turn around. Bright lasers and powerful water cannon can have the same effect. There is no reason why these should not be used to protect infrastructure on land, by the way. Some ship owners have fitted a non-lethal electric fence or 'stink bombs' around the deck perimeter, or smeared the sides of their vessel with slippery goo. Others dangle thin wires beside the ship that become entangled in the propellers of approaching small craft.

Seeing what's going on at night on a large vessel at sea would be almost impossible without infra-red video surveillance. Thermal cameras such as the M500 produced by Flir Systems especially for such a tough environment are already used by the military around the world and will deliver the images that pinpoint attackers without them even knowing it. And once on board, the security of doors to various parts of the ship is important,

both for the crew as well as for any passengers on board. VingCard Marine has got this aspect covered with a range of stainless steel cylinder locks, door fittings and access control solutions that are built to withstand the corrosive salty environment.

Customs and Company Compounds

Wherever goods enter or leave either a sovereign country or a trade community (such as the EEC), customs officials at air, sea and road ports have an interest not only in raising significant amounts of money from incoming goods, but also in ensuring that these goods are secure while on their premises. Classic video surveillance has been in operation at such locations ever since it was invented, with image quality thankfully increasing greatly with each new generation of equipment to the HD pictures we enjoy today. Thanks also to increasingly intelligent video analytics, for example using the IP3000i series cameras from Bosch Security, these images now generate useful and valuable data, and thereby help to increase efficiency and reduce costs.

Simple license plate recognition algorithms take the tedium out of allowing vehicles in and out of secure compounds. A number of manufacturers have highly-developed intelligent solutions for this task, among them Milestone Systems with the Inex ALPR integration, from Axis Communications integrated with gates or barriers, or from Seetec using their Cayuga VMS. And to prevent simple copying of license plates to fool the cameras, DKT International can incorporate hidden features such as holograms and laser marks to verify the authenticity of the plates.

◀ **Biometric identification has become both affordable and reliable, and solutions are now available that offer the highest possible levels of security**

Image: Nedap



▲ **GX Solutions can follow the route of trucks and trailers, and provide environmental and status information along the way**

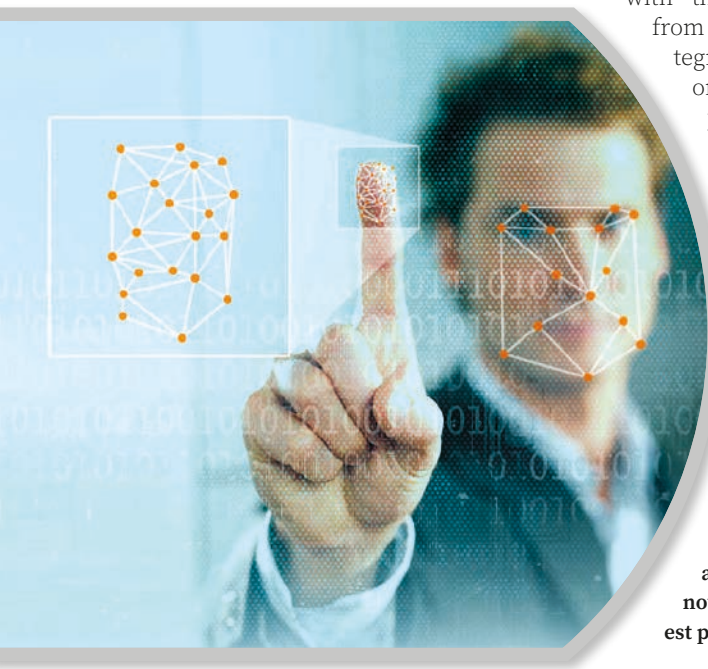
Image: GX Solutions

The mechanical barrier that lets vehicles in and out can take a number of forms: a simple pole, sliding or folding gates, retractable bollards or pop-up wedges. Each has its field of application, depending upon the level of security required. If necessary, a 'sluice' can be formed with two barriers that require the first to be closed before the second will open. This allows vehicles to be individually inspected and the occupants checked without any chance of them making a sudden exit. The Perimeter Protection Group have a full range of products to achieve this and also to cater for simpler requirements.

Bulk Road Transport

Opportunist theft can occur at any stage of the transport process if staff are careless. Open loading doors, unlocked or unattended loaded vehicles, and careless talk can all contribute to spontaneous crime and loss of goods. Far more worrying, however, is organized crime. Employees can be 'groomed' or blackmailed over a period of time to gain intelligence or provide information as to which transport company is transporting high-value or branded products. In particular low-paid staff may welcome the opportunity to earn some pocket money by providing information, directly stealing freight or by providing access for criminals to otherwise secure premises.

Once a vehicle leaves the security of the goods yard and goes out on the open road, its movements can easily be tracked and reported using GPS and GSM equipment on board. While it is moving, a truck is highly unlikely to be 'attacked' and goods or the complete truck with its trailer stolen. When it stops, however, it is at much higher risk. GX Solutions offer a trailer monitoring service that not





▲ The Road Blocker DSP K12, one item from a range built by Perimeter Protection Group, raises to a height of one meter from a depth of only one and a half meters

Image: Perimeter Protection Group

only provides environmental information but also door opening detection. CargoGuard have developed sensors and monitors, remotely-controlled locking and deterrence devices and a sophisticated monitoring system to defeat even the most determined thieves. Bosch Service Solutions in conjunction with the SAP Vehicles Network offer pre-booked secure parking areas that solve both the security problem and also the shortage of overnight truck spaces.

A kingpin lock is a first line of defense against trailer theft. An added level of security – and one that helps compliance with TAPA recommendations, see below – is given by a trailer immobilizer, such as that provided by Wabco. This interacts with the trailer's own braking system and doesn't allow it to move until the correct PIN has been entered on a concealed keypad. Any interference with the system will also raise an alarm.

The Sorting Center

Access control for personnel for any compound where high-value today can include biometrics

The LPR module Cayuga VMS from Qognify automates responses to pre-defined approaching vehicles, such as opening gates, raising an alarm or triggering other events ▶

Image: Qognify



that identify unique physical aspects of the person. Gone are the days of passing cards back over barriers to get someone else in or using stolen identity tags. Retina scans, fingerprint or whole hand scans are now the leading edge of human identification. And the cost of such equipment has become much more affordable than before as it becomes widespread. Johnson Controls' biometric access control solution will ensure that exclusively authorized personnel gain access to the secure areas

that you define. The readers developed by Nedap also address the issue of dirty or wounded fingers by employing multispectral technology.

The modern sorting center is only economically viable if efficiency is high and costs are kept well within budget. Contemporary handling systems provide the potential efficiency, but human resources are also needed. Temporary employees are frequently not sufficiently trained, and this increases the risk of theft and damage due to poor handling skills. So physically tracking parcels as they make their way from 'input' to 'output' can be achieved by employing the Qognify Logistics Solution. This tracks shipments using intelligent video analysis interfaced with the warehouse management system to provide Business Video Intelligence. It utilizes event and video data to build the complete route of goods, even when they are being moved manually and not being scanned electronically.

The 'Last Mile'

With our parcel safely loaded on the van that will bring it to its final destination,

the problem of theft is by no means over. Constant training and reminding of the responsibility that drivers have is fundamental to trouble-free final delivery. Additional technical methods are available to secure delivery vehicles, but these are only as effective as the person who is using them.

If the receiving customer is not there when the delivery van arrives, perhaps the safest option is to bring the parcel to a secure pick-up center instead. In Germany, DHL/Post operate the 'Packstation' and 'Paketbox' systems where the customer uses a card to authorize the opening of the compartment containing their parcel. Manufactured in Sweden, the TrueMobile solution from Assa Abloy Logistic Security Solutions provides a similar facility. Here, virtual 'keys' to secure boxes are distributed to the mobile devices of the deliverer and the collector.

Train Off The Rails

Every new employee is shown basically how to do the job they're expected to perform during their first few days. Security personnel, however, have had to absorb a lot more knowledge over recent years than was ever the case, with them now being expected to operate multiple increasingly complex systems. Training on these and other, more human aspects of the job must of course be continuously carried out. Max Security can provide far-reaching security training that will ensure your staff are up-to-date on the latest threats and methods.

Security staff may even be called upon to investigate losses while understanding the intricacies of the transport/logistics industry, be willing to roll up their sleeves and carry out other transport-related duties such as pallet counting, refueling vehicles, and maybe assist with stock audits. So anything that can lighten their everyday load is welcome.

Assimilating the information coming in from diverse security and environmental systems can quickly overload the human brain. Making sense of it all

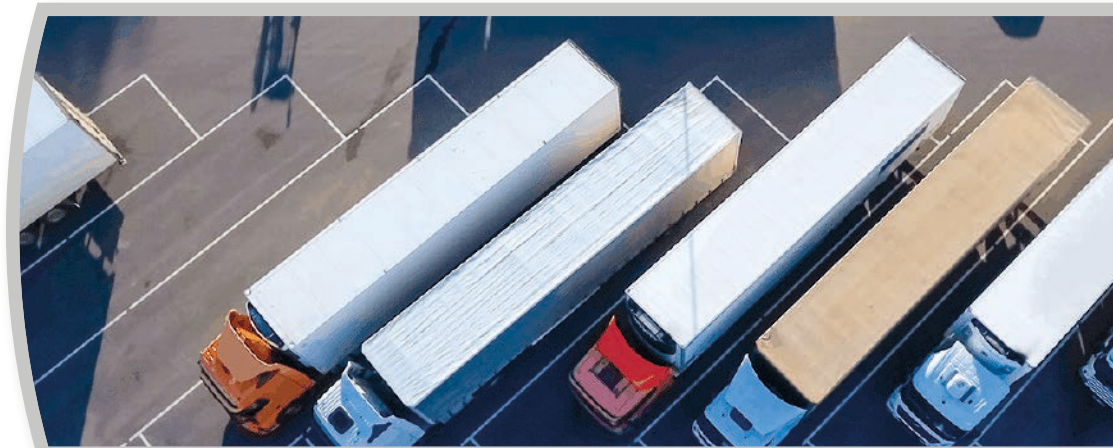
and assisting in potentially stressful security alert situations is the purpose of the Sky Walker Open Integration Platform from Entelec. This control room software allows the many diverse systems – CCTV, fire alarm, environment control, intrusion detectors etc. – to be controlled and monitored via just one logical human interface and provides physical security information management (PSIM). The pre-defined procedure to be followed if an alarm is raised leads the decision-making process to ensure a sensible, safe and timely response. Staff training becomes much simpler, and operator efficiency is optimized.

Criminals and terrorists are sure to find methods to circumvent the detection strategies that we apply, but putting as many obstacles in their way as possible is the continuous duty of the security industry. So frequent collaboration between the Security and Human Resources departments for staff and sub-contractor vetting, regular reviews of security strategies, the unannounced implementation of higher security measures and more advanced technology will, together, all help to reduce losses in the logistics chain.

The True Picture

The Transported Asset Protection Association (TAPA) was formed to address the international issue of supply chain security. It looks intensely at the processes along the route of goods from manufacturer to customer and every aspect of ensuring that those goods arrive as ordered and supplied. It collaborates with national and regional organizations involved in the individual elements of this transport, and also with governmental authorities (LEAs). It also collates develops international security standards and publishes statistics that show the full extent of the problem. While at first glance some countries appear to suffer more theft than others, as one country president recently said, “Think of this, if we didn’t do testing, instead of testing over 40 million people, if we did half the testing we would have half the cases.” Well, not collecting or simply ignoring theft statistics also conveniently denies the true scale of the problem. The Incident Information Service of TAPA was initiated to avoid exactly this attitude and to provide transparent data on theft during transport within EMEA.

Even those companies that conform to the TAPA convention security standards still suffer losses through theft or



Disabling a trailer with the OptiLock and the ELB locking system from Wabco will prevent coupling up and driving off with a truck full of high-value goods Image: Wabco

compliance failures, however, when employees do not comply with policies or procedures. So asset visibility and tracking provides a second line of defense to know that goods will arrive complete. RFID and/or GPS technology is typically employed for this. Sophisticated services are now available to track items around the globe and to follow their international progress. Deviations from expected routes or timetables will raise an immediate alert.

Strangely, terrorism sometimes actually puts items into the supply chain rather than taking them out. Therefore electronic screening and security checks are necessary to reduce the risks of explosives or chemicals being loaded onto vehicles, ships or aircraft. Here again, if barcode scanning and/or RFID tracking is being used at the loading point and throughout the transport chain, then an item that does not comply with what the data processing system is expecting should be immediately rejected and investigated.

Invest to Convince

There is an old saying that “security is a cost that cannot be retrieved.” Well the more discerning customers will look nowadays for freight companies that don’t agree with that and that have invested in the latest security services and freight protection. Investing in security in fact becomes a selling tool to win further business.

[1] “EC Security Guidance for the European Commercial Road Freight Transport Sector”, The European Union. ISBN: 978-92-79-77768-4 / doi: 10.2832/97074

Author
David Jayne
Editor for GIT SECURITY

CONTACTS

Assa Abloy
www.assaabloylogistics.com

Axis Communications
www.axis.com

Bosch Security
www.boschsecurity.com

Bosch Service Solutions
www.boschservicesolutions.com

CargoGuard
www.cargoguard.com

DKT International
www.dkt-international.com

Entelec
www.entelec.eu

Genasys
www.genasys.com

GX Solutions
www.gxsolutions.eu

Johnson Controls
www.johnsoncontrols.com

Max Security
www.max-security.com

Milestone Systems
www.milestonesys.com

Nedap Solutions
www.nedapsecurity.com

Perimeter Protection Group
www.perimeterprotection.net

Qognify
www.qognify.com

Seetec Cayuga
www.seetec-video.com

Transported Asset Protection Association (TAPA)
www.tapa-global.org

Wabco
www.wabco-customercentre.com

A configurator helps to produce tailor-made network boxes exactly meeting the customer's requirements ►

During the lockdown, Slat not only continued to manufacture its products, but also maintained development at full speed. Now, two further network products have been brought to market at the same time.



NETWORK SOLUTIONS

Save Time

PoE Network Interface Solutions

The SDC PoE8 managed Layer 2 switch, in its compact, modern housing, can be used immediately without further configuration. It is particularly suitable for video surveillance, access control and IP automation applications. Up to 8 PoE/PoE+/HiPoE devices (up to 90 W per port) can be safely powered thanks to the integrated micro UPS, with a total power available of 180 W. Two fiber optic ports ensure the connection over longer distances and enable redundant communication (RSTP). Equipped with the latest management and safety features, the SDC-PoE8 automatically restarts the connected devices when stalled.

Even extremely short power cuts are no longer a problem as they are filtered and, in the event of a complete power failure, the 10-year maintenance-free Li-Ion battery takes over and ensures continued operation at full power for up to 14 minutes. The reliable device for today's modern network technology can be conveniently remotely monitored in real time via SNMP, BACnet IP and HTTPS web server.

Outdoor Network Interface Box

After the success of the Synaps IP and PoE outdoor network interface boxes in video surveillance, perimeter protection and urban traffic display, the general range of products has been expanded to meet the specific needs of customers, for example providing multiple voltages, a fiber optic connection, PoE/PoE+/HiPoE and passive PoE. A specially developed Synaps configurator helps to produce tailor-made network boxes according to the customer's exact requirements. The customer therefore receives everything from a single source, fully assembled, tested in the Slat factory and with a CE marking for the entire system.

The basic configuration includes a multi-port Ethernet switch, Li-Ion backup technology adapted to requirements, surge protection and a secure connection via SNMP V1, V2c and V3, BACnet IP and an HTTPS web server. All that remains to do is the installation, which is quick and easy because the solution is delivered tailor-made for the job.



The SDC-PoE is a range of switches from 1 to 24 ports that supplies power to devices connected via Power over Ethernet, according to IEEE standards



The Synaps-PoE is an outdoor network interface box dedicated to video applications and PoE powered transmissions, ensuring continuity of service for the equipment it protects

CONTACT

Slat
Lyon, France
Tel.: +33 4 7866 6363
comm@slat.fr
www.slat.com

STid Mobile ID®

**STAY FREE
YOU SHOULD
ONLY PAY
FOR WHAT YOU**

NEED

Security is a basic human need.

STid Mobile ID® is the only smartphone-based Virtual Card platform that doesn't charge annual licensing, user or subscription fees.

Your virtual Cards can be revoked and re-issued anytime which enables you to better annually budget card usage.

It's no surprise that STid has the most awarded reader range solutions worldwide.

WE'VE GOT YOUR BACK





PatriotOne
TECHNOLOGIES



PANDEMIC SOLUTIONS

AI To The Rescue

Technology is the Public Health Response to Covid-19

Surveillance systems might not immediately spring to mind when thinking about the first defenses that communities can use against the spread of Covid-19. However, with over 770,000 deaths recorded worldwide, there are serious concerns about global health, as well as the societal and economic impact of this virus. Martin Cronin, CEO of Patriot One, gives us some indicators on potential solutions to combat the pandemic.

The first wave is hardly over; keeping people in lockdown is becoming increasingly difficult. And everyone is now seeing the socio-economic effects of this 21st-century global pandemic. The crisis has plunged the global economy into the worst recession since World War II, so it's no surprise that governments around the world want their citizens to get back to work. A key part of this is deploying people, policies and technology platforms that can aid authorities in managing, tracking and mitigating this microbial threat and warning citizens who may be infected to stay home or get tested.

Controlling the Covid-19 pandemic rests on the detection and containment of infection, the interruption of community transmission and its consequent impact on human health. Vaccine development is underway but it is still speculative as to when it will be globally available. While this is the ultimate goal to eradicating the virus, we can't afford to wait to help contain the rate of infection. Therefore, we need to look at new technologies already known to work, and

adapt them to find alternative ways of controlling the spread of the virus.

One of the solutions being explored is incorporating Artificial Intelligence (AI) and machine learning into existing video technologies. In the case of surveillance cameras, this could mean government, healthcare and security professionals can monitor public spaces and environments through the combined use of digital and thermal video cameras and video management systems (VMS), to not only map how the virus may be moving but also ensure that public safety measures are being enforced.

Leveraging AI to Reduce Risk

Critically, technology must be capable of both identifying and tracking the virus. Early detection of Covid-19 could help to control infection rates, lessen the burden on healthcare services and ensure that individuals with symptoms are made aware. An unobtrusive system that is adaptable enough to be deployed across a range of environments where the public gathers in enclosed spaces is needed to improve the effectiveness of today's security systems.

Video management systems with AI functionality at their core and operating on connected devices can be efficiently deployed remotely. From a central server to technologies across a company's network, all efficiently rolled out to allow for the detection of indications of an outbreak can begin to quell this virus. AI has the potential to detect those displaying symptoms of infectious disease, without requiring physical human contact – a truly touchless experience, and safe as well.

Computer vision technology has existed for over a decade. Now, with the power of real-time AI-driven software, integrated with current VMS systems, threats can be identified for immediate response. This can be done in a non-intrusive way that does not disrupt people's day-to-day lives or invade their personal space, privacy or civil liberties. This may be an issue with other systems, such as queuing for forehead-tap temperature checks or walking through a disinfectant tunnel. Using video analytic software, traditional video cameras can be enhanced into remote video health screening tools, with capabilities such as:

- Face mask compliance detection: security personnel can be alerted when people are not complying with facial mask requirements using object recognition/computer vision technology. Although regulation around mask use currently differs from one jurisdiction to another, it is widely

accepted that specific personal protection equipment (PPE) can assist in preventing the spread of this viral pathogen. This technology would be particularly useful in environments such as hospitals, retail facilities and schools, where members of the public gather in an enclosed space.

- Elevated body temperature screening and identification: individuals are scanned for elevated body temperature when entering a building. If the temperature is outside a nominal range, an alert is transmitted to onsite security for further action. The benefits of this would be seen in locations such as care homes and offices, or indeed any venue that needed to quickly screen individuals or a queue of people entering a facility at a controlled checkpoint.
- Social distancing and large gatherings: data captured by surveillance cameras can detect how close people are to one another. If they are not complying with government guidelines, an automated alert message could be activated to have onsite security remind them to maintain a distance. Similarly, they can detect large groups of people who may be interacting in close proximity and therefore increasing the possibility of multiple infections, prompting an automated response or police intervention if required.

The Future of Covid-19 Tracing Strategies

As we look ahead to the future of public security in a world impacted by this global pandemic, detecting and tracing an infectious disease is the cornerstone for effective transmission control and prevention. It is clear that AI-driven technologies have a role to play in making this possible, and thus making our communities safer. Governments must coordinate with today's healthcare and security services as well as technology providers to pool the expertise needed to best implement and integrate these AI technologies for the public good. They need to work together, with a clear strategy in place to respond to threats and improve community safety.

Author

Martin Cronin, CEO, Patriot One

CONTACT

Patriot One Technologies
Washington DC, USA
+1 888 728 1832
www.patriot1tech.com

ASSA ABLOY

Opening Solutions

New: Incedo™ Business

The access control you demand, the flexibility you need



Download a free
introductory guide

campaigns.
[assaabloyopeningsolutions.eu/
incedo-business](https://assaabloyopeningsolutions.eu/incedo-business)

Experience a safer
and more open world



SPECIAL FOCUS

Before the 2019 season Ipswich Town Football Club was faced with an ultimatum: Upgrade their CCTV system or risk not being able to play at their Portman Road headquarters. They called in the experts from ClearView, who came up with an ingenious solution which delivers high-quality network video images over legacy coaxial cable.

STADIUMS

Above the Roof

Hikvision and ClearView Provide Upgraded Video Monitoring Solution for Ipswich Town FC

Ipswich Town Football Club has a proud history which dates all the way back to 1878, playing at its Portman Road Stadium home since 1884. The Suffolk club has been part of the Football League since 1938, winning the English league title in the 1961-62 season.

Location and Conditions

Portman Road itself is a fully seated, 30,000-capacity venue, which has hosted an England international against Croatia as well as numerous England youth team games. Its primary role, of course, is as home facility for Ipswich Town, and prior to the 2019 football season, there was a problem. And quite a significant problem, at that.

Without an upgrade to the stadium's CCTV system, the club was informed it wouldn't be able to commence the new season. That's a pretty big deal, when you're a football club.

There is background to this, of course. Specialist security and surveillance company ClearView has maintained the club's existing CCTV system for the past decade. During that period, it was agreed that the existing CCTV surveillance system had become outdated and was in need of an overhaul. The ability to increase recording capacity, as well as allowing for recording of higher quality and higher resolution images, was a key consideration. ClearView provided Ipswich Town with upgrade options, but a lack of available funds – meant these had to be put on hold until there was a budget for the technology investment.

Challenges

The pre-season ultimatum naturally meant that a newly updated CCTV system was a priority, but ClearView had to deal with some major challenges presented by the stadium itself.

"Portman Road has four large stands, with the existing CCTV system utilising analogue coaxial cables that ran over the roofs of those stands," said Paul Main, Strategy Director at ClearView. "The system we wanted to deliver Ipswich Town was based around the 8MP IP PTZ cameras from Hikvision. This was because the club needed the ability to deliver high-resolution, evidence-quality images for crowd monitoring and safety purposes. With that in mind, we had to devise a solution to ensure those IP images could be transmitted over long-distance coax cable."

Installation

The solution ClearView designed was to utilise eight Hikvision 8MP Network Speed Domes, which are able to operate in very low lighting conditions. These cameras were positioned strategically around the stands of Portman Road so as

to monitor crowd activities and safety at all times. Crucially, they were able to send their ultra-high-resolution images over a conventional analogue coaxial cable.

Solutions

The issue of transmitting these high-quality images over the existing coaxial cable was also complicated by the extreme lengths of cable over the roofs of the stadium. Working at such heights is always tricky and investing in all new cabling was not a cost-effective option. ClearView opted instead to use HighWire Longstar products from Veracity. They offered the necessary high-speed Ethernet and reliable power delivery over the long lengths of coaxial cable.

Around the Location

An additional seven Hikvision 2MP Turbo PTZ cameras were installed around the outer perimeter of the stadium, also monitoring crowd and safety conditions. Whilst not the high 8MP resolution of the internal stadium PTZs, the quality of these images over the shorter distance being covered far exceeded the original analogue images and allowed the club to keep their costs within the budget.

An additional thirty-three 8MP Turbo Dome cameras, which are vandal-resistant and have a low-light capability as well, were deployed strategically throughout the Portman Road facilities, including outside the stadium covering surrounding buildings, and in various locations under the stands. These were for crowd monitoring in public areas such as bars, corridors and function rooms.

All the images are stored on 48TB of Seagate Skyhawk hard drives using three Hikvision Turbo HD recorders, all running Hikvision's HikCentral video management software. These, together with three separate PC workstations, each allocated sixteen specified cameras, allow users to monitor the whole stadium during match days. Three 48-inch high-resolution wall-mounted monitors, each displaying 16 cameras, allow for continued overall viewing should an incident occur while one of the workstations is being used to focus on that situation.

Results and Review

"We were really happy with the quality of the images," said ClearView Research and Development Engineer James West. "We knew the cameras were able to deliver 8 megapixels of resolution, but we wanted to make sure the system we installed was capable of delivering those detailed pictures across the legacy cabling. The combination of Hikvision cameras and Veracity transmission products worked



Three 48-inch high-resolution wall-mounted monitors, each displaying 16 cameras, allow for continued overall viewing

perfectly and meant that the system was not only able to do the job it was designed for, it was also cost-effective."

ClearView Project Manager Lance Malkin said: "The system proved to be of value almost immediately. On one match day, a young man decided to set off a flare in the North Stand. Because of the high quality of the images the system captures, they were able to identify him from a camera positioned in the South Stand." Ipswich Town Football Club couldn't be happier with the results.

"Overall, the picture quality is first class, the system is easy to operate and the ability to focus in further on 'live' incidents is a terrific feature," says Mick Warden, Match Day Safety Officer at Ipswich Town Football Club. "The system has certainly gone a long way to ensuring fans attending matches at Portman Road can do so in a safe and secure environment.

"Our previous system was over 15 years old and was in urgent need of updating. Apart from being a key and reliable safety system, as one of the features, I was keen as Safety Officer, to be able to 'drill' down after an incident or event such as a missile thrown onto the pitch, for example, to be able to identify the offender. Suffice to say the Hikvision system, installed by ClearView, has met my expectations and we have had two occasions this season where offenders have been identified. We would have stood no chance with the previous system."

CONTACT

Hikvision Europe

Hoofddorp, The Netherlands

Tel.: +31 23 554 277 0

marketing.eu@hikvision.com

www.hikvision.com



Transmitting high-quality images over the existing coaxial cable was complicated by the extreme lengths of cable over the roofs of the stadium



SECURITY SOLUTIONS

One For All

An Open Platform Team Member Boosts the Initiative

The Inteox open camera platform from Bosch is designed to enable app developers, system integrators and other partners to develop customer-specific apps or to easily customize security solutions with no restrictions or boundaries. The fully open principle frees system integrators to add apps from the Security and Safety Things Application Store, making it quick and simple to customize security solutions.

As the world becomes increasingly connected, the Internet of Things (IoT) presents individuals and businesses with new opportunities. But to take full advantage, the safety and security industry must think differently about the way it develops solutions and embrace change. Inteox is designed according to fully open principles: it combines built-in Intelligent Video Analytics from Bosch, a commonly-used open Operating System (OS) provided by the Bosch start-up company Security and Safety Things, and the ability to securely add software apps at a later date.

Application developers can simply develop apps based on a common language. The platform is accessible to anyone who wants to imagine, create and deploy customer-specific solutions and is backed by the manufacturer's performance quality, lasting build quality, high data security and privacy, and ease of installation and use.

Ideas Taking Shape

With the Inteox platform, everything a camera sees can be understood and transformed into valuable insights. Anything from object classification, speed

or specific characteristics, to exact GPS coordinates. This can be used to inspire or develop software solutions that define what a security device will be and how it works. By adding apps, a video security camera can be used as an access controller based on video data. Or it can become a fire detector that can detect fires early based on video data. By using intelligence that is already built in, and cleverly combining it with one or more apps, it can be optimized to act as a sensor that provides smart data for multiple applications – the possibilities are endless.

It provides a sound return on investment as the functionality of the device can be easily changed by adding or removing apps to meet changing requirements. Cameras built on this platform are no longer just smart cameras; they become smart devices.

Customized Solutions

With built-in Intelligent Video Analytics, Inteox offers an incredible range of opportunities for exciting new solutions. It makes it easy for app developers to take advantage of the system's ability to provide information, such as when people or objects travel in the wrong direction, or park in restricted areas. It can provide metrics about the color, the type of object, speeds, and GPS coordinates. Inteox can also tell if objects have been left behind in a pre-defined area, or if a perimeter is being breached. This is just a subset of the possibilities that built-in Intelligent Video Analytics has to offer. App developers can now focus on leveraging this intelligence and its valuable data for their own software developments to introduce new exciting features.

Inteox cameras are secure by design and connect seamlessly to the Security and Safety Things open IoT ecosystem.

This includes an application store, web portal for app developers and designers, and a device management portal. It gives app developers access to online tools, developers' libraries, an API framework, and codecs to enable them to create new things. System integrators can easily tailor solutions to meet specific customer requirements by installing and executing multiple apps on any Inteox camera. With these, they can easily turn security cameras into smart IoT devices.

Everything Deployed

With a portfolio of cameras built on Inteox, it's easy and safe to deploy apps, software and services to devices, whatever their location. The Bosch Remote Portal offers device management with daily or advanced configuration and set up from anywhere. Plus there are value-added services such as In-Store Analytics or counting reports that can be added to one or multiple cameras. Inteox cameras can also connect to the Security and Safety Things IoT platform via the Remote Portal, with access to relevant app information, all the tools needed to develop and test apps, as well as a device management cockpit with app and device health statistics.

Inteox Edge

Learning about the capabilities of such an open and capable platform has been made easy by the introduction of an e-zine called Inteox Edge, which is designed for use on mobile devices. Amongst other content, it provides feature articles, an expert Q&A interview, a section dealing with the latest software, apps, products and technologies as well as useful tips. The e-zine also helps busy security professionals, app developers, and users to keep up-to-date with the changes that the security industry faces, and to share how to build smarter solutions that can cater for their future needs. The first issue is now available for free download at the website shown below.

CONTACT

Bosch Building Technologies
Bosch Sicherheitssysteme GmbH
 Grasbrunn
 Tel.: +49 89 6290 0
 info.service@de.bosch.com
 www.boschsecurity.com
 www.boschbuildingsolutions.com

HID Global Aero Controller Platform

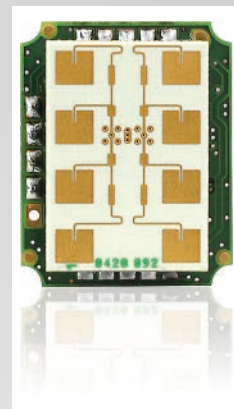
Building on the success of HID's Mercury, HID Global has announced the HID Aero platform featuring its next generation of open-architecture intelligent controllers that increase choices for a wide range of businesses while future-proofing access control investments as requirements change. "HID Aero is providing a broader market with features that were generally available only in solutions for larger organizations, while eliminating the ongoing cost and complexity of designing, manufacturing and maintaining panel hardware at the same time," said Jaroslav Barton, Director of Product Marketing at HID Global. "It also brings end-to-end security to everyday applications with encrypted communication and threat detection, and robust features to meet corporate compliance." Based on HID's Mercury hardware used in more than four million panels shipped globally, the HID Aero platform speeds development time for access control solution providers by including all required hardware, firmware, software and development tools.



www.hidglobal.com

Innosent: Non-contact Alternative to Push-button Switches

Innosent introduced a new product for automation applications: The company has developed the IMD-3000 radar system as a modern alternative to push-button switches. The new product enables ticket machines, doors, dispensers, lights, and other devices to be controlled without contact. Its compact design allows customers to retrofit the system even in an existing infrastructure. People operate numerous switches every day to trigger certain functions. In the course of a day, countless people's hands touch the same button. We thus involuntarily come into contact with numerous pathogens and significant dirt. This contact can be avoided with a touchless switch. This issue is more relevant than ever in 2020. The demand for contactless technology is high. Radar systems such as the IMD-3000 are used as proximity switches in devices such as dispensers, bottle deposit machines, or ticket machines. This can help to reduce the risk of a smear infection.



www.innosent.de

SPECIAL FOCUS: SAFE CITY

No Sin City

Examples of Successful Security Deployments in Cities

Many cities have key areas or problematic zones where a typically higher crime rate occurs or other fields and topics that need to be addressed and leveraged to a more secure level. This is why GIT SECURITY takes a closer look at chosen cities where the installation of security technology not only was successful, but was followed by decreasing crime rates and happy city and police departments.

The Safe Cities Index 2019 [1], a report from The Economist Intelligence Unit and sponsored by NEC Corporation, researched 60 cities across 57 indicators. Amongst these indicators are digital security, health security, infrastructure security and personal security. The results were: Two-thirds of the top ten cities with the highest score are in Asia-Pacific with Tokyo leading the field. However, they also found that city safety does not correlate with global region. The highest-ranking cities have an important common factor. They are good at a basic level through all of the security indicators: Easy access to good healthcare, cyber-security, community-based police patrolling or disaster continuity planning.

Speaking of basic security levels, a city can take action with one simple step: Upgrading their city surveillance or security technology in general. That's why this article looks at some example cities where security measures were successfully deployed and have changed the level of security tremendously.

SPECIAL
FOCUS

In Cologne, the police can observe an area of almost 9000 square metres with only eight Panomera cameras ▼

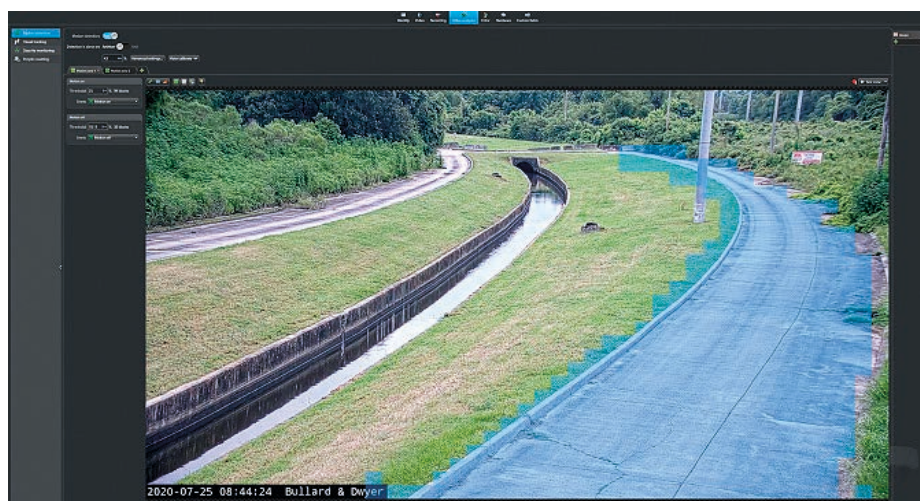


Mennecy Reduces Crime Levels

For Hikvision, safe city is an important industry and application field for their solutions, but due to variations in each city in different countries, they don't have a generic solution, but tailored installations for each individual city scenario. Cities all over the world are looking at ways to reduce and manage crime levels. One such city, Mennecy in France, turned to installer Ibson for a solution, who then installed Hikvision cameras and equipment. They had already identified areas where crime was more likely to happen and needed to make these areas more secure. With 78 cameras installed around strategic areas they covered many different scenarios: Network IR Speed Dome cameras from their Smart IP series with DarkFighter technology ensured high image quality in every lighting condition and help combat crime around shopping malls, train stations and schools; ANPR cameras were used on major roads to control speeding, and finally, the solution was brought together and managed using iVMS 4200 and a video wall in the city monitoring center. The city department reported on a desirable development: While being able to go after more serious crime like assaults, they were also instrumental in reducing 'community crimes' like urinating in public. They saw a drop in incidents in the areas where the cameras were installed. In those places, delinquency was reduced or even removed altogether.

Cologne Secures 9000 Square Metres

To date, Dallmeier has been able to execute 19 major projects in German cities. The breakthrough in the "Safe City" sector came at the end of 2016 with the successful commissioning of the camera



Genetec's Security Center platform processes motion detection in a defined zone of the camera's field of view


systems on the Domplatte (cathedral square) in Cologne. Here, the police can observe an area of almost 9000 square metres with only eight Panomera cameras, and this with a minimum resolution density of 250 pixels per meter (px/m, according to DIN EN 62676-4). This very resolution is required to be able to recognise unknown individuals. With large-scale installations in 19 German cities, including Frankfurt, Essen, Wiesbaden, Chemnitz and Bremen, the manufacturer can look back on an extremely successful track record in the field of urban surveillance.

New Orleans Addresses Illegal Dumping

Recently, in City Council District E, New Orleans (NOLA) took an innovative approach to address illegal dumping. The district's Councilwoman, Cyndi Nguyen


took a hands-on approach: NOLA's Sanitation Department and Real-Time Crime Center (RTCC) worked in partnership to install cameras at known dumping sites, but the cameras alone weren't enough. Bill Wood, IT Supervisor at the RTCC, also took a few minutes to set up an event-to-action rule in Genetec's Security Center platform which processes motion detection in a defined zone of the camera's field of view, and then immediately takes a snapshot of the video and emails it to specific people. "This offender used specific furniture moving trucks to load and dump debris in this very isolated area. We already had motion detection set up for the camera monitoring that area, so I was able to quickly go through the added notifications and see those trucks coming in and out. Then, I configured the system to send us an email with a snapshot of the video frame as soon as motion






Secured network products and DC UPS solutions.

We protect your critical applications in buildings and cities.



Managed Layer 2 Switch, 8 PoE/PoE+/HiPoE ports + 2 fiber optic ports, Micro-UPS (Li-ion battery), 180 W



www.slat.com

Hikvision's Smart IP Series for higher resolution and improved low light functionality



was detected. A couple of days later, I received an email with a picture of the specific moving truck and notified the officer. We called some units in the area, and they were able to pull over the offender. He later confessed to the illegal dumping at the station,” explained Bill Wood.

Sofia Enhances Public Safety

The main focus for Bulgaria's capital, Sofia, was ensuring public safety via detection and prevention of potential security threats. A key area to secure was the National Palace of Culture (NDK), where most scheduled events hosted 40,000+ delegates during Bulgaria's presidency. On the one hand, this required limiting the number of system operators and increasing the efficiency of video feed through analytical capabilities. On the other hand, a major challenge was consolidating various sources of city-wide information into a single system. A few factors made the task even more complex: most systems were separate, inadequate and lacking important functionalities; legacy products from different vendors operated independently of one another; users could view video only from specific workstations; each system had to be monitored separately.

Digital technologies were leveraged via a Microsoft Domain Awareness System, making Bulgaria the first EU country to implement it. Video streams

were consolidated into a single Milestone XProtect Corporate video management system (VMS) integrated with various internal systems (people/vehicles register, access control) and managing thousands of in- and outdoor cameras from nine different vendors (analogue/IP). Thus, Milestone provided a platform for proactive monitoring and quick detection of incident's location, enhancing law enforcement's ability to handle events effectively in different scenarios. Among them are automated alerting when a stolen vehicle's license plate recognition (LPR) was detected on camera, people running, unattended luggage, people loitering in main venue and restricted areas, crossing a line, etc. The open architecture and accessible pricing of the platform were useful advantages in the process of creating the unified security system for the purposes of the Ministry with the help of one of Milestone's technology partners.

Bologna with Smart Traffic Management

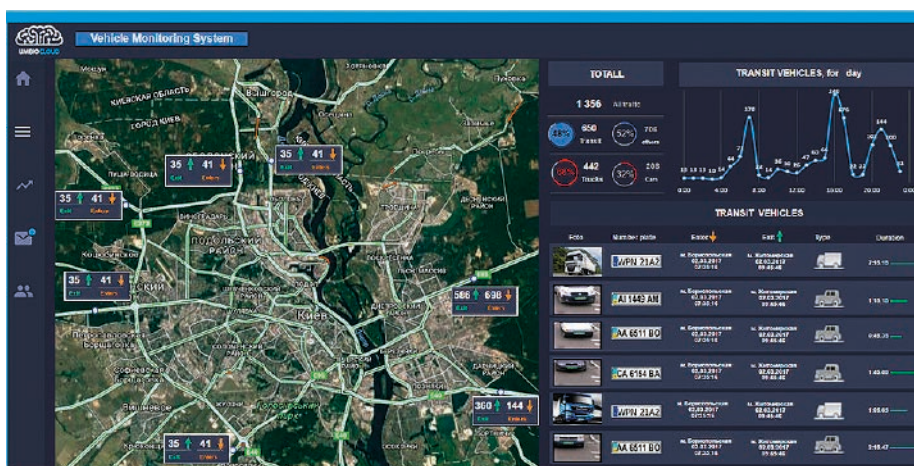
The city of Bologna has chosen Wisenet video surveillance cameras to help it create a smart traffic management system. Bologna is the seventh most populous city in Italy. It is at the centre of a metropolitan area of approximately one million

people with a diverse range of travelling requirements within a very large area. The City of Bologna has always invested in traffic control and monitoring systems with the aim to make travel easier and faster for its citizens. An example of this is a centralised traffic light management system which has been in operation since 2013 and has helped reduce travel times within the urban area. After extensive research, which included the evaluation of a wide range of possible solutions, a decision was made to procure a total of 89 Wisenet cameras manufactured by Hanwha Techwin. The implemented solution consists of cameras dedicated to vehicle counting and classification, and ANPR cameras which have been installed on strategic gates. The cameras monitor both directions of travel to allow local authorities to study the most important and strategic vehicle access flows to the city. This is made possible thanks to the latest generation of Wisenet cameras. By integrating high image quality and advanced video algorithms, Wisenet 'intelligent' cameras are able to enhance the value of video surveillance by supporting mobility and security in Smart Cities.

Source

[1] <https://safecities.economist.com/safe-cities-index-2019>

Hanwha Techwin's cameras monitor both directions of travel to allow local authorities to study the most important and strategic vehicle access flows to the city



CONTACT

Dallmeier Electronic
www.dallmeier.com

Genetec
www.genetec.com

Hanwha Techwin
www.hanwha-security.eu

Hikvision
www.hikvision.com

Milestone Systems
www.milestonesys.com



The DCA system helps to monitor changes in a patient's condition

HEALTH CARE

Help to Save Lives

Raytec and Oxehealth Monitor Patient's Vital Signs

Good news can be hard to find amidst the current global health crisis, but we're pleased to report that Raytec's Vario2 illuminators have been helping to reduce the risk of infection from Coronavirus amongst NHS staff, and to save lives.

Who Are Oxehealth and What Do They Do?

Raytec have been working with medical software provider, Oxehealth, whose Digital Care Assistant (DCA) technology allows vital signs of patients to be monitored remotely. The DCA system works by using an optical sensor (operating in conjunction with Oxehealth's software) installed inside a patient's room to monitor changes in their condition, such as their pulse and breathing rate. To do this, the DCA system also requires high-quality infra-red (IR) illumination so the sensor and software are capable of picking up precise levels of detail with high accuracy. This is where Raytec's Vario2 IR illuminators play an important role. Vario2 i2 IR illuminators are installed alongside the sensors and provide essential, unobtrusive light, which allows vital signs to be monitored accurately, 24/7.

Saving Lives During Coronavirus Outbreak

We are all doing our part to increase social distancing and prevent the spread of infection during the pandemic of COVID-19. However, our doctors and nurses on the frontline continue to put themselves at risk as they tackle the outbreak.

The Oxehealth system helps to limit the exposure of medical staff to contagious patients, reducing the number of bed-side observations by up to 71%. Ultimately this protects staff, reduces the spread of the infection, and saves lives. The system also helps to mitigate against staff shortages within the NHS, ensuring resource can be directed to where it's needed most.

How We're Supporting Oxehealth

In response to the COVID-19 pandemic, NHS trusts are building the Oxehealth

system into critical response plans to help protect staff and mitigate risk. This has meant a surge in demand for DCA systems, but also for Raytec Vario2-i2 illuminators. Raytec is working closely with Oxehealth to ensure supply of these products continue and are directing as much resource as possible towards these orders as our factory continues production. During these difficult times, it's reassuring to know that Raytec products are playing a part in helping to protect the country, the NHS, and to save lives.

CONTACT

Raytec

Ashington, UK

Tel.: +44 1670 520 055

sales@rayteccctv.com

www.rayteccctv.com



Anonymous Crowds

Enabling Next Generation Security for Smart Cities with Intelligent Lidar



SPECIAL
FOCUS

IoT solutions are rapidly expanding to improve infrastructure, efficiency, convenience and quality of life for residents and communities throughout the world. Society has grown to rely on connected devices like smart doorbells, door locks and security systems to keep their homes and families safe. However, many security systems lack the proper features to be feasible for commercial and municipal use cases. Lidar technology has the potential to tackle today's pressing security challenges and open the door for many exciting new possibilities for smart cities.

Lidar's advanced 3D perception provides accurate representations of surrounding environments with a detection range of up to 300 meters. Perception software combined with lidar can detect, track and classify objects to precisely indicate speed and real-time location. By combining advanced lidar sensing with edge computing to provide true 3D imaging data, end-users can implement lidar intelligence to enhance the future of smart cities.

No Matter the Lighting

Traditionally, smart security systems have relied on standard CCTV cameras alone, but lidar can work hand-in-hand with other sensing technologies, including cameras and radar to augment security systems. Because lidar functions well in darkness, direct sun and varying

weather conditions, it is well-suited for many outdoor applications. Additionally, lidar is not easily blinded by flashlights, making it versatile for indoor applications as well.

It Fits In

Moreover, advanced lidar technology has made it possible to make the lidar sensor small and lightweight such that it fits in standard CCTV housing. Compact lidars can be installed and integrated in a variety of places, whether as a standalone solution or as part of a larger system.

Efficiency and adaptability are important factors when thinking about incorporating lidar into traditional systems. Customers have the option to separate the edge computer from the sensor to fit in a National Electrical Manufacturers Association (NEMA) cabinet for easy

access. Integrators that install camera equipment can now rely on that experience to install lidar equipment in minutes, without having to spend time and money retraining their crew, allowing businesses to save costs overall.

Maximizing User Privacy with Anonymized Data

As privacy issues continue to dominate headlines, now more than ever, companies and government agencies need to take privacy into consideration for security and safety applications. Facial recognition systems are often criticized for infringing on people's right to privacy, with some companies banning the use of facial recognition for surveillance. As privacy concerns continue to dominate headlines, lidar offers businesses an ideal solution for anonymized surveillance.

◀ Anonymized crowd perception allow personnel to identify unusual patterns or behaviors in locations such as airports

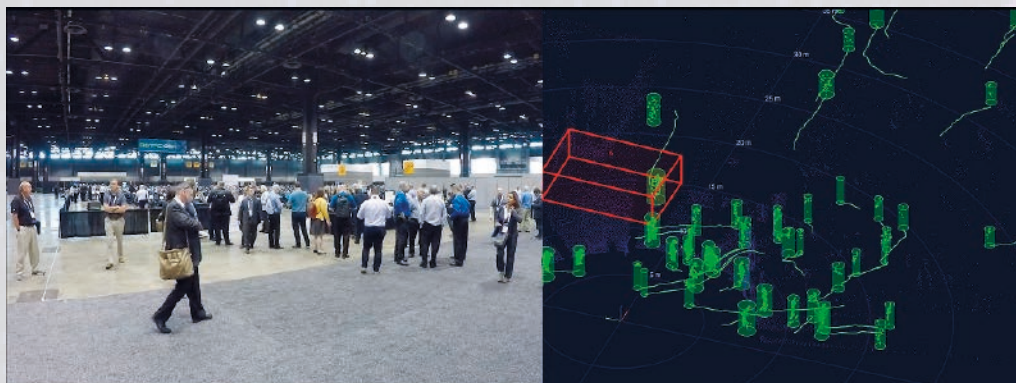
Its advanced tracking capabilities allow personnel to identify unusual patterns or behaviors in locations such as airports, rail platforms, traffic intersections, building perimeters, and more.

Lidar's high-resolution point cloud data can be used to provide information such as the location, size and velocity of a person or object, without showing facial features and other biometric information. This preserves the anonymity of people not involved in security incidents, unlike traditional security solutions which capture and store everyone's data. This is especially useful for venues with specific customer groups, such as theme parks for children, which could be privacy sensitive.

Minimizing Data Burden to Open up Possibilities for Application

The revolutionary nature of lidar for smart security is apparent from some of its key strengths: superior 3D perception accuracy, ease of use and deployment and the ability to network multiple sensors together to seamlessly cover large areas. On top of that, lidar solutions require a much lower data and network bandwidth than cameras.

With a fraction of the data output of a video-based system, lidar enables information to be analyzed instantly for real-time decision making. This could



Queue tracking helps analyze how consumers navigate through retail stores, engage with advertisements and products on display, and move in queues or aisles

also make it cost-efficient for companies to deploy lidar in a scalable network for a wide range of applications to ensure a safer smart city, including:

- **Public safety:** Enabling anonymized surveillance for intrusion detection, access control, zone safety and behavior tracking to keep people and businesses safe, while maximizing privacy. Additionally, monitoring for space capacity and crowd density to help operators comply with indoor social distancing rules.
- **Law enforcement:** Helping police accurately measure the speed of vehicles to better regulate speeding and other violations. As lidar requires lower data storage, record and replay of accident and crime scenes for effective assessment is easier.
- **Smart intersection and traffic management:** Monitoring for pedestrian and vehicle safety, enabling smart traffic lights to optimize wait times and providing accurate data on traffic density with real-time route status information.
- **Public transit efficiency:** Providing anonymized detection and crowd

analytics at transit stations to ensure safety of transit users.

- **Urban planning:** Allowing urban planners to better understand how people move around and interact with public amenities, studying traffic flow for future planning of roads, buildings and parks, and identifying the impact of construction projects and potential safety hazards.
- **Transport infrastructure:** Tracking, profiling and classifying vehicles to provide real-time information to optimize electronic, remote tolling and parking management. This could help minimize contact between drivers and operators to ensure safety in a pandemic scenario.
- **Smart retail:** Analyzing how consumers navigate through retail stores, engage with advertisements and products on display, and move in queues or aisles so that retailers can optimize the shopping experience with increased efficiency and safety.

Currently, lidar has been deployed in multiple smart city projects across the globe. With the mass adoption of IoT devices, smart lidar systems have largely improved traditional security systems and infrastructures by increasing data accuracy and privacy, while also minimizing the data burden placed on network in the age of 5G. Lidar will revolutionize the next generation of IoT devices and help build a safer, smarter future.

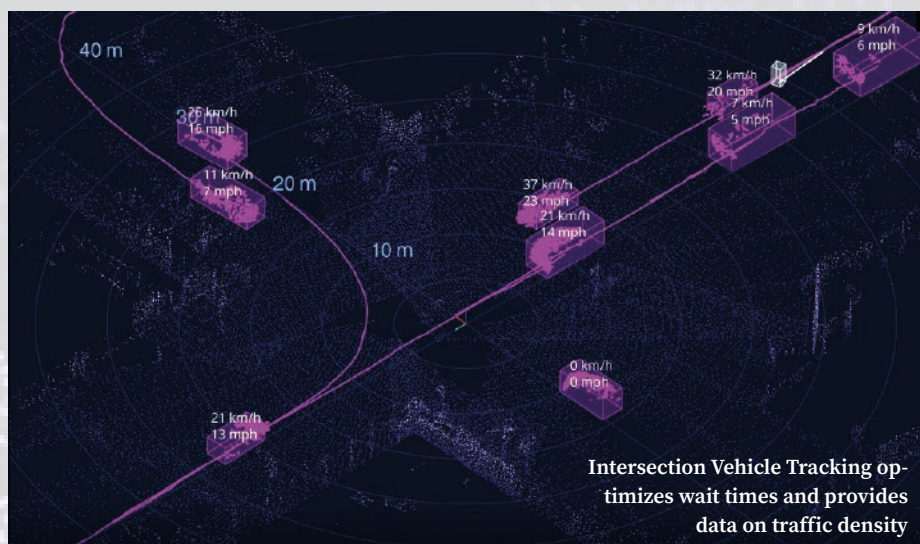
Author

Klaus Wagner

Director of Product Management and Marketing at Cepton Technologies

CONTACT

Cepton Technologies
San Jose, CA, USA
www.cepton.com





COMPANIES

Survival At The Edge

Spotlight on an Italian Perimeter Security Equipment Manufacturer with over Forty Years' Experience

Cias Elettronica has been operating in the security market since 1974. It carries out research, the development and manufacture of security equipment and perimeter protection systems that utilize a spectrum of different technologies. GIT SECURITY spoke with Fabrizio Leonardi and Raffaele De Astis who head up the team at the company's headquarters in the Bovisa district of Milan, Italy, in particular about the effects of the Covid-19 outbreak on their company.

GIT SECURITY: Sig. Leonardi, has the current pandemic had a severe effect on your company and have there been any positive aspects coming from it?

Fabrizio Leonardi: I believe that the obligatory and necessary 'Stop' of the past months has given a unique opportunity to all operators in our sector, and not only to review and improve many corporate organizational aspects. Smart working has certainly undergone a significant acceleration, but I also think of the possibility of reviewing our company organizations by implementing new management software and digitizing various processes that were still managed on a paper level.

In our specific case, towards the end of February, when the problem in northern Italy began to clearly define the risks

we were running and the lifestyle that we would necessarily have to adopt, we immediately activated a 100% smart-working mode for all departments except production, because they were still able to operate, even if under strict safety and security rules.

At that point our priority goal was to not stop and not to waste precious time but to transform the time available into something that could be useful to the market and to our customers. It was clear that the pandemic crisis we were living was going to transform very quickly in an economic crisis. For this reason, we first created an E-learning program in four chapters that then evolved into a T-learning program with technical tests on real devices. The results have been incredible and still continue to give us satisfaction with the wide participation

of distributors, installers, end-users, designers, and consultants.

That is certainly one positive outcome. What about product development?

Fabrizio Leonardi: Also in the R&D department, we fortunately managed not to suffer any particular delays compared to our roadmap. Many products, are taking shape; some were presented at the last edition of Sicurezza in Milan as absolute previews. The first of those was Micro-Ray, released for the first time onto the market in July 2019 and already with excellent sales results as well as a nomination for a GIT SECURITY Award in the Intruder Alarm Perimeter Protection category. Some useful accessories and setting software will be added that will make the use of this product even easier.

◀ **Fabrizio Leonardi (l.) and Raffaele De Astis (r.)** run the perimeter security specialist company Cias in Milan

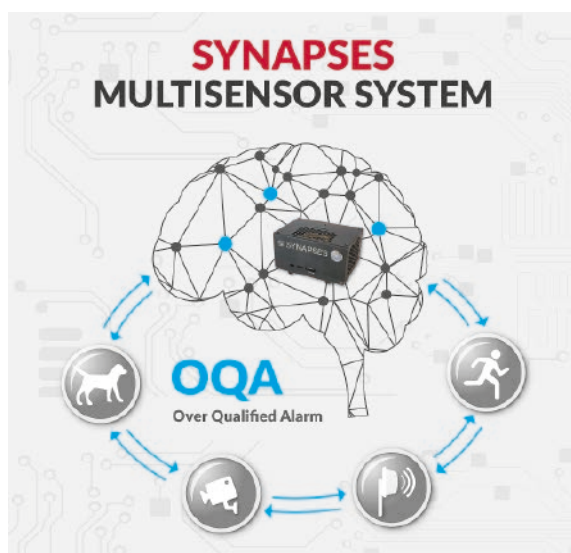
Then came Synapses, the new technology that introduces the concept of neural connectivity between perimeter sensors. It integrates up to four different sensors for each of the eight freely configurable areas, performing a video analysis using Deep Learning criteria. By distinguishing the presence of different typical targets of anti-intrusion systems (man, car, truck, train etc.) in the video stream, it can increase or decrease the threshold of the sensors combined with each individual area, significantly reducing the NaR (nuisance alarm rate) and increasing the PoD (probability of detection) in perimeter protection.

Sig. De Astis, where do you think this strange period has left your company and the broader security industry?

Raffaele De Astis: Looking to the future, it is foreseeable that sectors that have remained firmer so far will begin a slow but continuous recovery of security business from now on. It is precisely here that the opportunities for national manufacturing companies could arise. Export will be a potential relief valve for these as it has been in the past, but not for everyone however. It will be much more difficult to start exporting from scratch in this unpredictable period in which travel is not allowed, or will be severely limited for some time to come.

So remotely working together with other specialists could be beneficial?

Synapses neural connectivity between perimeter sensors integrates up to four different sensors for each of the eight freely configurable areas



Cias Integrates with Genetec RSA 3.5 Security Center Add-On

This new integration allows for better intertwined perimeter security systems and seamless alarm management. The add-on uses manufacturers' efficient detection algorithms and merges monitoring across multiple technologies, such as microwave barriers, radars, and accelerometer-based fence detection systems for high security. The IB-System IP integration gives Genetec customers all the features available in Cias data-collection software to provide enhanced perimeter protection monitoring on the graphical user interface.



Murena Radar Knows the Difference

On some sites, it is of utmost importance to distinguish if a real human intrusion is occurring or something else is going on. Cias labs worked out how to cleverly discriminate between targets, thanks to digital analysis given by fuzzy logic algorithms. It can understand if it's a small animal moving around or a man intruding or a car passing by.

Raffaele De Astis: In this historical moment, we think even more so than in the past that the common difficulties can lead to alliances and collaborations between companies, both at a technological and at a strategic or commercial level, and that these synergies can lead to important added value for the benefit of the whole production chain. Some technological trends can be guessed. Already for the present, but also in the near future, access controls will increasingly be linked to the scanning of body temperatures, and in any case to touchless systems. Transport safety must be reinvented hand-in-hand, so to speak, with safety control measures.

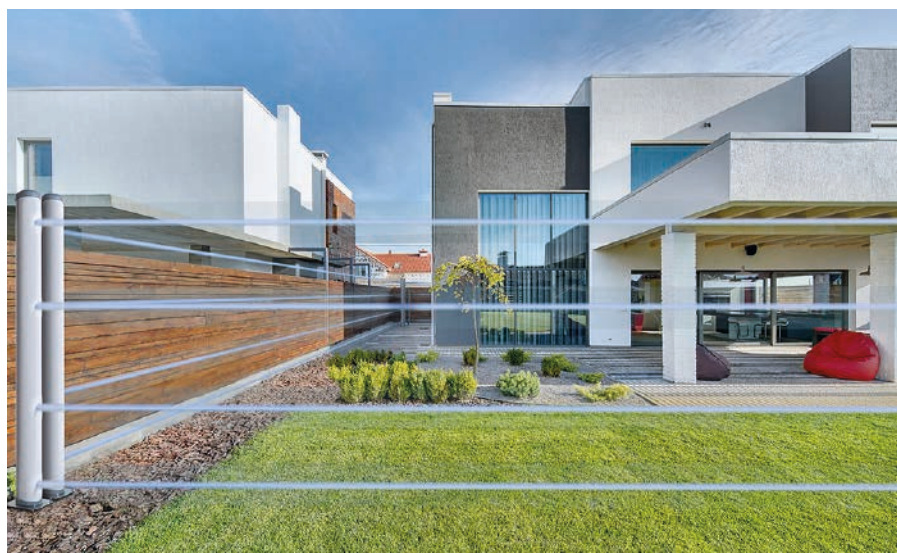
Where do you see the most potential for the introduction of contemporary security solutions now?

Raffaele De Astis: The security of critical infrastructures will remain a priority and, in some verticals, such as energy, telecommunications, data centers, it will be even more focused. And it is clear to everyone that the sudden acceleration of digitalization, which has been a huge game for many people, also brings with it a potential increase in cyber threats that will have to be taken into serious consideration, both by companies and by individuals.

CONTACT

Cias Elettronica Srl
Milan, Italy
+39 0239311225
www.cias.it

Micro-Ray is a virtual detection barrier using linear microwave rays that covers a tightly defined area



Integrated in burglary-reporting video management systems, the scanners also detect dark shapes at night, and turn the cameras in the direction of the endangered area

SENSORS

Lidar At Its Best

Smart Building Security and Personal Safety

Whether for monitoring areas, facades or perimeters, when it comes to security-related building automation, SICK laser scanners (such as the LMS141) have established themselves as dependable sensor systems to detect persons and to monitor buildings. In addition to use in video management systems, in this time of the coronavirus pandemic, they also support the counting of persons and detection of their direction, as well as checking that they maintain social distancing.

Police statistics for 2017 recorded more than 71,000 burglaries in bureaus, offices, factories, workshops and warehouses and the total annual losses amount to several hundred million euros.

A prudent attitude and appropriate precautions, particularly the use of burglar alarms, can prevent losses or at least reduce their extent. Nevertheless, hardly any team of guards can keep an eye on everything all the time – and there are not many cameras that can provide a 100% guarantee that endangered areas can be ceaselessly and completely monitored. Laser scanners from SICK have proved themselves capable of detecting potential crimes early enough for security personnel to rapidly reach the crime scene without being noticed.

The portfolio of scanners includes many sensors for a variety of monitoring areas and detection speeds and – with the LMC12x for indoors and the LMC13x for

outdoors. Integrated into video management systems to report attempted burglaries, they also detect dark bodies at night, and turn the cameras in the direction of the endangered area. They are thus capable of automatically tracking moving people from one laser scanner to the next, or from one camera to the next.

Laser scanners from SICK – more precisely, 2D and 3D Lidar sensors (Light Detection And Ranging) – also take on building automation tasks that ensure safe operational and emergency processes, for example in shopping malls or at airports. During this Covid-19 pandemic they help minimize the risk of infection by counting persons and detecting their direction of movement, as well as checking the maintenance of social distancing between them. Sick has developed special sensor apps for this purpose – People Counter and Distance Guard – for application-specific programming of the Lidar sensors.

Laser Scanners: Smart, with Reliable Detection and Secure Data

Whether for reporting break-ins or detecting people, laser scanners from Sick exploit their various technological capabilities in both tasks: monitored areas of up to 275° per device; ranges up to 120 meters; individually adjustable monitoring fields; reliable detection of dark objects in the dark; immunity against direct sunlight and deliberate dazzling. They also support smart burglar alarm concepts. The data preparation within the device does not lead to 'big data' because only relevant information is transmitted. This minimizes the communication and computing load within the video management system.

The ability to be integrated into the Ethernet-based bus systems of building automation, and the direct network communication with programmable cameras, enable up to ten different areas to be monitored with just one laser scanner

and the simultaneous control of several cameras in the case of an alarm. In this way, several camera locations can be efficiently combined and visualized in the security center via the network. In terms of data protection and data security, laser scanners offer the advantage of anonymized detection: no personally attributable data is collected during the simple detection of a person's presence.

Intrusion Detection: From Outside to Inside

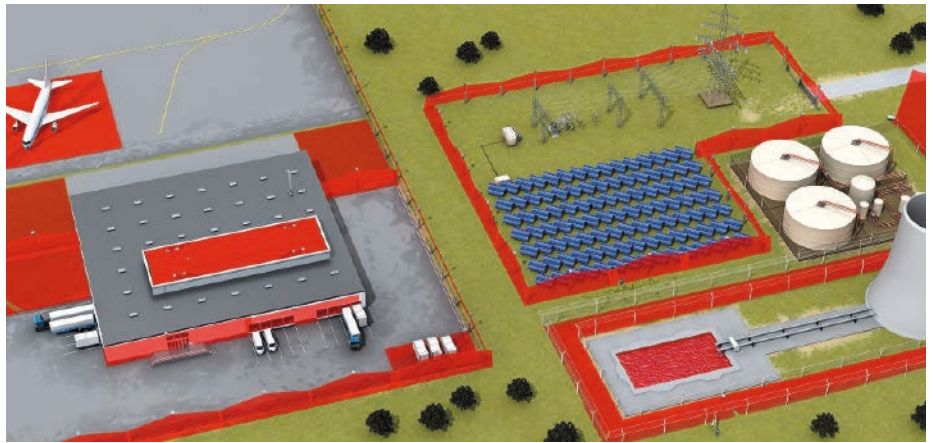
Reliable protective monitoring against break-ins, theft and vandalism ideally begins as early as possible. In other words, not directly in front of the building to be protected, but on the open areas and perimeters before it. Typical 'from outside to inside' tasks are:

- monitoring fences and walls,
- the detection, camera guidance, and tracking of persons or objects on open spaces,
- protecting facades and roofs,
- monitoring ceilings and breakthrough protection,
- inspecting gates, doors, and passage-ways,
- the individual protection of objects, e.g. paintings or other exhibits in museums.

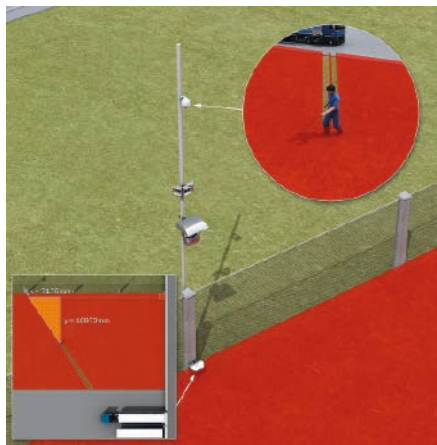
Despite the variety of these tasks, an innovative approach has become successfully established with the technology of the measuring Lidar sensors from SICK. These laser scanners are very well suited for area monitoring, both indoors and in open spaces. Their field monitoring, as well as signal and alarm outputs, can be flexibly adapted to operational requirements. Deliberate and accidental false alarms are almost impossible thanks to intelligent Multi-Echo technology. The scanners are largely immune against vandalism, sabotage and tampering, and require minimum installation effort thanks to their single-device design.

Detection of Persons Using Lidar Sensors

In addition to laser scanners to signal break-ins and alarms, building automation also focuses on solutions to optimize processes, as well as to comply with technical and organizational safety regulations. Tasks include the energy-optimized control of heating, air conditioning and ventilation equipment, the temporary closing off of overcrowded areas, floors or parking levels, or the evacuation measures to be implemented if the worst comes to the worst. In addition to its 2D Lidar sensors, Sick has therefore also developed a variety of 3D Lidar



2D and 3D Lidar sensors are important components in effective protection systems against break-ins, and also take on tasks that ensure safe operational and emergency processes in shopping malls or at airports, for example



People Counter enables the anonymized counting of persons in a pre-defined space to prevent overcrowding

sensors. These multi-layer scanners enable the detection of persons individually or in groups, their counting, and recognition of their direction of movement – both indoors and outdoors.

In response to the Covid-19 pandemic, SICK has also developed innovative sensor solutions based on its existing and proven portfolio to efficiently implement measures against the virus spreading. Combining the 2D and 3D Lidar sensors with the People Counter and Distance Guard Sensor Apps helps people to maintain the recommended minimum distance to one another in public and in pre-defined areas. The People Counter – based on the hardware of the MRS1000P 3D Lidar sensor – is a sensor app that can detect and differentiate persons on the basis of their contours. The direction of movement of persons can be clearly seen thanks to the sensor's four layers. The combination of several sensors allows even larger areas with different entrances and exits to be covered.

The Distance Guard Sensor App is designed for use in surroundings in which



SICK's Distance Guard Sensor App makes it easy for people to maintain the desired distance

current recommended social distancing should be maintained between people, whereby a TiM series 2D Lidar sensor determines the distance between two persons who are warned by an optical or acoustic signal as soon as they stop maintaining the defined minimum separation. And because neither the People Counter nor the Distance Guard process personal information, companies that use SICK SSensor Apps to ensure maximum utilization of space and maintenance of the minimum distance between people not only comply with hygiene regulations but also data protection legislation.

The Author
Jörg Kibbel

Product Manager Lidar

CONTACT

SICK AG

Waldkirch, Germany

Tel.: +49 7681 202 4183

info@sick.com

www.sick.com



Denis Schäfer, Regional Product Marketing Manager for Occupational Health and Safety at Dräger

RESPIRATORY PROTECTION

The Right Fit for Maximum Protection

Lightweight Respiratory Protection During the Covid-19 Pandemic

Due to the global spread of the novel SARS-CoV-2 virus, the demand for suitable personal protective equipment has risen sharply and, as a consequence, FFP masks are particularly sought after. Previously used mainly in industrial applications, they nowadays first and foremost serve to protect medical staff during the coronavirus pandemic. Dräger, the German medical and safety technology manufacturer, produces FFP masks. Production in Sweden and South Africa is currently running at full capacity and around the clock. New sites will soon be built in the US state of Pennsylvania, in Alsace, France and in the vicinity of Blyth, UK. Denis Schäfer, Regional Product Marketing Manager for Occupational Health and Safety at Dräger, explains – among other things – how FFP masks protect their wearers and whether they can be reprocessed.

GIT SECURITY: FFP masks are currently a much sought-after commodity. What exactly does “FFP” stand for and how safely do the masks protect wearers?

Denis Schäfer: The abbreviation “FFP” stands for “filtering face piece”. There are three device classes, which are classified according to their maximum total inward leakage in line with EN 149. These are FFP1, FFP2 and FFP3, with the latter being the highest protection class. To go into detail, an FFP1 mask provides 80 percent, an FFP2 mask 94 percent and an FFP3 mask 99 percent protection against solid and liquid particles and aerosols.

What are your FFP masks made of?

Denis Schäfer: Our FFPs are made of non-woven materials – particularly what is known as “melt-blown spun-bonded fabric”. They have both a mechanical and an electrostatic protective effect. The mechanical protective effect is based on the arrangement of the filter material and its actual filtering performance. The electrostatic protective effect can be compared to a dust cloth. When dust is wiped off, it sticks to the cloth. This is also the case with FFPs, which “capture” the particles.

The bottlenecks in the supply of personal protective clothing have opened a public debate about procedures that could reprocess masks and allow them to be used multiple times. What do you think about these procedures?

Dräger FFP masks are made of non-woven materials, specifically of “melt-blown spun-bonded fabric”



FFP2 masks provide 94 percent protection against solid and liquid particles and aerosols

Denis Schäfer: FFP masks are tested and approved as disposable masks. This is what the underlying EN 149 standard for FFPs stipulates. Therefore, the reprocessing of our masks is not planned nor intended. The aforementioned electrostatics can be damaged or even completely destroyed during cleaning, disinfection or other forms of reprocessing, e.g. by UV radiation, radioactive radiation or heat. The FFP would then possibly no longer have any protective effect.

What do I need to pay particular attention to when wearing an FFP mask?

Denis Schäfer: Above all, the wearer must check that the mask is correctly fitted. No leakages may be allowed to occur as they could provide a gateway for contaminants. Consequently, the nose clip on the FFPs must be pressed down from top to bottom so that the mask can be adjusted perfectly to fit the face. After adjusting the mask, the wearer grasps it with both hands and, if necessary, keeps the exhalation valve closed. The wearer then breathes out strongly. If air still escapes, the nose clip and the fit of the mask in general must be checked again. It is only ready for use when no more air escapes.

Masks may need to be worn for longer periods of time at a stretch, particularly at the workplace. What is the maximum length of time an FFP mask can be worn? When do you have to change them?

Denis Schäfer: In Germany, an FFP must be worn for a maximum of one shift, i.e.

eight hours. However, if infective agents such as SARS-CoV-2 are present in the environment, the FFP must be disposed of each time it is taken off. Differing national regulations must however always be observed. When the mask is put on again, it cannot be ruled out that the potentially contaminated exterior of the mask has come into contact with the inside of the mask or into direct physical contact with the user. Also, it may be unclear how it has been stored in the meantime – how and where? Have other people had contact with the mask?

What protection do surgical masks provide compared to FFP masks?

Denis Schäfer: A surgical mask protects the wearer from splashes of liquid, and other people in the vicinity from droplets in the exhaled air of the person wearing it. It serves to protect patients from the exhaled air of medical and nursing staff in hospitals. However, it does not provide reliable protection against particles, viruses or bacteria in the ambient air. In addition, the masks do not sit tightly on the face and leakages occur where no respiratory protection is provided.

CONTACT

Drägerwerk AG & Co. KGaA

Lübeck, Germany

Tel.: +49 451 882 3179

carolinesophie.schroeder@draeger.com

www.draeger.com

The exhalation valve is punched onto the Dräger X-plore 1900, protection class FFP2



Special
Focus

Fire Detectors

3x3

1. What applications are best suited for wireless fire detectors?
2. What measures do you take to reduce false alarms?
3. Please describe one highlight of your product offering.



Warren Moyle

Senior Technical
Support Engineer at
Apollo Fire Detectors

1. A wireless system offers a comprehensive solution to issues which might occur with a wired system. Our hybrid wireless range XPander reduces installation time and requires far less cabling. Therefore, it is well suited to time sensitive projects where extensive time spent on site will cause disruption to the occupants. The lack of cabling required makes it also an ideal solution for historic or listed buildings as fire alarm systems in these applications must be sensitively integrated. They should have minimum impact on the structure of the building, and should be reversible, making a wireless solution the best choice.

2. One of the most common reasons for false alarms is contamination inside the detector such as dirt and dust. The Soteria range of addressable fire detectors are Apollo's next generation in fire detection, specifically designed to reduce false

alarms from contamination by using Purelight optical technology and five sensitivity modes for multiple environments. Purelight technology ensures maximum protection against dust ingress into the detector chamber, which extends product lifetime and reduces activations from contamination.

3. The Apollo Test Set is a portable test unit which is designed to save engineers time on-site by aiding fault finding and loop management. It features a touch-screen display which offers intuitive control and makes interrogating and controlling all Apollo devices easier than ever. The Apollo Test Set is able to fix some of the most common faults engineers face, quickly and hassle-free, such as earth fault, short circuit fault and double addressing. Engineers can now complete the job in a more time-efficient way, without sacrificing quality.

1. Since we at Lupus offer a wireless smoke detector solution, we naturally advocate wireless detectors with a connection via the mobile network, especially NB-IoT. This eliminates bottlenecks (gateways, Fire Alarm Centers, etc.) and maximises decentralization of the failure risk, because every smoke detector has a direct connection to a cloud, which processes the signals accordingly. Redundancy is ensured by roaming to several mobile networks. The end-to-end digital signal path provides much faster signal transmission and higher signal reliability than is possible with analog solutions.

2. Our system recognizes smoke using a multi-level detection system of the software algorithm in the smoke detector firmware, which is continuously self-optimizing through the cloud connection.

3. The fully automatic remote maintenance capability according to DIN 14676-1, method C as well as the connection to the Lupus Cloud via the Narrowband IoT mobile network make the Lupus mobile smoke detector unique. Each smoke detector has its own mobile phone connection – gateways, local internet or power sources are obsolete. Thanks to this integration the detector is always online. The device status can be checked at any time via the web and the app, which guarantees maximum safety. Every resident can receive remote alarms on his or her smartphone. In addition, emergency call service control centres can be connected in real time via the cloud using the Contact ID protocol. The fully automatic remote maintenance eliminates high costs for maintenance. Buildings, rights management and notifications can be quickly and easily administered by one person for thousands of buildings. And despite all these extensive features, the Lupus mobile smoke detector has a battery life of 10 years.



Matthias Wolff

Managing Partner
at Lupus Electronics

1. Thanks to wireless technology, fire detection devices can be quickly and freely positioned and repositioned. This facilitates planning, enables quick installation and offers a high degree of freedom and flexibility. Swing (Siemens Wireless Next Generation) is our ideal solution for rooms or buildings of historical value like libraries, museums, etc. where architectural restrictions make cabling impractical. Other typical use cases are temporary sites such as exhibitions or events where changing usage and adjustments to the room layouts are frequent.

2. At Siemens our aim is to protect what matters to our customers. Reliable and fast alarms are crucial if we want to achieve the best possible protection. A detector prone to false alarms due to deceptive phenomena would not only annoy occupants, but also disrupt business continuity. Siemens offers highest detection reliability and immunity to deceptive phenomena with its unique ASA technology (Advanced Signal Analysis). The Swing detector that I mentioned earlier offers an extremely fast and highly reliable detection response to smoldering and flaming fires caused by the combustion of liquid and solid matters. The integrated ASA technology allows us to optimally adapt the detector to the environmental condi-

tions by simply choosing an application-specific ASA parameter set. ASA technology interprets and evaluates the signals in real time. As a result, the detector distinguishes deceptive phenomena such as dust or steam from real fires – preventing false alarms and thus costly business interruptions. This makes the ASA detector the optimal solution for any application, from clean to harsh.

3. While reliable detection is of the utmost importance in wireless alarm systems, it is also important to ensure reliable wireless communication. With Swing, Siemens combines these two key elements in one package. So our customers not only benefit from reliable and fast detection but can also rely on our mesh technology for safe wireless transmission. Each wireless device communicates with adjacent devices within the mesh network. This means that at least two redundant paths are available at any time for transmitting the information. To further increase reliability, each device has two frequency bands with multiple channels. In the event of interference, the network “repairs” itself by automatically changing channels and/or frequency bands or forwarding information via an adjacent device. This ensures that all available information always reaches the gateway and, ultimately, the fire control panel.



Malav Bhatt

Head of Systems for European fire detection portfolio, Siemens Smart Infrastructure

SECURITY PRODUCTS

An Operationally Flexible Fire Protection System

A further aluminum fire protection system with 90 minutes of fire resistance and a basic depth of 90 mm, the Firestop ADS 90FR90, has been added to the Schüco Firestop platform. The key feature of the platform is the open rebate profile geometry, through which adjustments can be made quickly and flexibly to suit changing requirements, all while the building is still in use. The highest fire resistance class of 90 minutes is achieved by using accessories such as fire boards and glazing clips. A fire-resistant insulating mat that has been inserted into the outer and leaf frames allows the fire door to be further enhanced. Adjustments such as automating the door or changing from single to multi-point locking can also be implemented quickly and flexibly thanks to the profile geometry. Concealed fittings offer additional design freedom and a uniform look throughout the building, and are now available for the first time for fire doors with 90 minutes of fire resistance as well as for enhanced system sizes. www.schueco.com



Fire Alarm System Specified for a Retail Business Complex

C-Tec's Cast XFP addressable fire alarm system is now protecting a refurbished retail development in West Yorkshire. Situated in the heart of Cleckheaton, Victoria Court has recently undergone a £2.5 million transformation and is home to two floors of offices and an array of retail and commercial outlets, including Dominos Pizza and the Halifax Bank. The new system features distributed intelligence, autonomous decision making, high speed data transmission and a powerful group activation command for the rapid deployment of alarm signals. At a late stage in the installation, the client decided they wanted the smoke detectors in a specific area to be black so C-Tec manufactured them to order. www.c-tec.com



FIRE PROTECTION

Check out the Czech

Fire Protection for Ostrava's Residential Buildings

Many houses in Eastern Europe do not have a proper and standard fire safety system, even though modern standards demand for it. Ajax Systems and Safe Home Europe will therefore ensure the fire protection of multi-story residential buildings in the Czech Republic.

Ajax Systems, together with Safe Home Europe security system distributor, launched a pilot project on fire protection of houses and neighborhoods in the Czech Republic. The project is mentored by the Fire Rescue Service of the Czech Republic (FRS CR), and the Czech Association of Fire Officers (CAFO). The focus of the project is on the wireless protection of existing multi-story apartment buildings against fire.

The main goal is to acquaint the general public and associated organizations, such as residents of multi-storey houses, homeowners, housing and owners' associations, service organizations, home administrations, rescue services, and installation partners of security systems with fire safety issues of the tower blocks. With that they wanted to brief the audience on potential threats and risks and share the possibilities of prevention and technical security methods of modern times.

Project Implementation

The need for the project arose, because lots of houses in Eastern Europe countries do not have a fire safety system, although all the modern security standards require this. In the Czech Republic, for example, it is the Decree No. 23/2008 Coll. on technical conditions for building fire protection, which was further amended by the Decree 268/2011 Coll. It would cost a fortune to set up wired security systems in every flat in the building and some people could also be against it.

Primarily, the concept and mechanics of the pilot project were agreed on with the CAFO. The tests were performed by Safe Home – they installed an Ajax security system in 12 various multi-storey buildings in the Czech city Ostrava-Zábřeh. The smallest building consisted of four floors and eight flats, the biggest one had 11 floors and 77 flats.

A Hub Plus and a couple of ReX signal extenders were installed in the entrances,

and FireProtect detectors were set up on the stairwells. The residents also had the opportunity to install FireProtect in their flats if they wished to.

If FireProtect detected smoke, a built-in siren would go off to wake up everybody on the floor. Additionally, the residents were asked to download the Ajax Security System app. In case of fire, they would instantly receive a corresponding alert on their smartphones and would be notified about the emergency.

Within a minute, if the cause of the fire was not resolved, sirens of every FireProtect detector in the building would be activated, and the evacuation would begin.

Why Was Ajax Chosen?

"Some of our employees, family members, friends, and acquaintances live in these or similar buildings. For this reason, we have been looking for and waiting for a 100% solution that we will be able to stand up for; a technology that



FireProtect: Wireless fire detector with temperature sensor

will meet all our demanding requirements without any compromises.

The Ajax system offers a professional, modular, and cost-effective wireless solution, making it clearly predestined for this purpose. Thanks to the expansion of the Ajax product line and the appearance of ReX radio signal extenders and Hub Plus central control panels, Ajax meets all the criteria necessary for the protection of this type of objects”, says Daniel Král, CEO of Safe Home.

What’s Next?

Now when the test stage is completed successfully, they are ready to move to the next step. In cooperation with FRS CR and CAFO, Safe Home currently prepares seminars and project presentations for all regional cities of the Czech Republic, allowing all interested parties to participate in a specific project, the goal of which is to maximally contribute to the protection of life, health, and property in multi-storey apartment buildings.

This September Safe Home will start to actively promote this security solution and project participation to all the associated organizations. Each region will have a partner that will provide the installation of the Ajax security system in the pilot residential building.

The goal is to scale the project to other regions as well and to expand the program at the national level.



1 minute passed before the fire was detected.

Within a minute, if the cause of the fire was not resolved, sirens of every FireProtect detector in the building would be activated, and the evacuation would begin

CONTACT

Ajax Systems
Kyiv, Ukraine
www.ajax.systems

Teletek electronics
European manufacturer of full range intruder and fire alarm systems.

Addressable and Conventional Fire Alarm Solutions.
Perfect decision for your fire alarm installation.

info@teletek-electronics.bg
www.teletek-electronics.com

LPCB
EN54 - 13 Certified
EVPÜ

FIRE PROTECTION

Champions League on Campus

Transparent Integration of Fire and Smoke Protection at Football Club FC Bayern Campus

The FC Bayern campus integrates all of the functions of a modern sports academy. Individual requirements for transparency, functionality, design, ventilation as well as fire and smoke protection have been achieved both visually and homogeneously throughout with Schüco system solutions. When it came to fire protection, the central, multifunctional academy building in particular required special conceptual solutions.

The three-storey academy building of the campus integrates many different functions across a gross floor area of around 8000 m². In addition to changing rooms, indoor training areas, the offices of the junior department and the management, the building also contains an apartment section with bedrooms, a canteen, common rooms and classrooms. The free-standing building is connected to the north stand of the football stadium via a glazed bridge on one side of the façade.

Transparent Fire and Smoke Protection

The transparent, bright character of the building envelope and interior room design was implemented consistently across the individual functional areas through the use of large glazed Schüco system units. This was also achieved in building areas and with structural work where the authorities had stipulated increased fire and smoke protection requirements. The fire protection and

overall security concept for the campus was developed by hhpberlin and was approved by the lower Munich building authorities and the Munich fire brigade.

Rating as Class 5 Special Construction

The combination of academy and football stadium with large floor areas and space for more than 100 users resulted in the entire campus receiving a rating as a building class 5 special construction in accordance with Bavarian construction law. This rating generally means that there are special fire protection requirements, which were met thanks to the building-specific fire protection concept. This resulted in several special solutions, which will be described below and which allowed the protection objectives to be fulfilled in a transparent way.

Fire and Smoke Doors for the Escape Routes

Owing to the fact that there are apartments integrated in the central academy building, the building authorities also conducted an

assessment based on the special requirements of the German regulation on accommodation (Beherbergungsstättenverordnung, BStättV). Consequently, a direct escape route was required leading from the accommodation via necessary corridors to the fire escape stairwells. The emergency exit and escape routes were fitted with glazed fire and smoke doors (Schüco ADS 80 FR 30 and Schüco ADS 80 FR 60, Schüco Firestop T90). The Schüco ADS 65.NI SP smoke doors used in some areas of the building are usually open and are fitted with hold-open devices which trigger an automatic closing process if smoke is detected. Where the emergency exit and escape routes lead to the outside on the ground floor, a limit of 1.20 m on the opening depth of the motorised sun shading ensures that people can easily escape the building.

Natural Smoke Extraction via Toplights

In the event of a fire, smoke is extracted from the academy building by means of



◀ The FC Bayern Munich campus integrates sports facilities, offices, apartments, common rooms and a canteen

Emergency exits and escape routes are secured with transparent fire protection barriers ▼



◀ Classroom and meeting room with views of the football stadium

One of the internal courtyards with Schüco door system, façade system and mechatronically controlled bottom-hung units for natural smoke extraction ▶





motorised toplights (Schüco AWS 75.SI+ bottom-hung units with TipTronic SimplySmart fittings system). These bottom-hung units, which are attached to the Schüco FW 50+.HI façade as toplights, can be activated centrally in the event of a fire. In addition to undergoing the described structural work, the entire building ensemble is fitted with a comprehensive fire alarm system. This technical fire protection measure was stipulated by the authorities primarily because of the accommodation rooms, in order to ensure sufficient, round-the-clock protection for residents.

Special Façade Solution

In order to enable variable use and division of space from storey to storey, a fire wall was constructed within the

academy building with an offset from the ground floor to the first floor. The areas where the fire wall meets the façade were designed with a narrow space measuring 2 metres wide and 3 metres high in fire resistance class F30, in order to ensure protection against flashover from the ground floor to the first floor. This was where a key design benefit came into play through use of the visually homogeneous Schüco systems. The profiles of the façade area, which was designed using the FW 50+ BF system as an F30 fire-resistant façade, look completely identical to the adjoining FW 50+.HI transom façade, which has no requirements. This allowed a uniform façade appearance to be created, despite the specific fire protection requirements.

◀ The multifunctional system façade system is combined with a profile-integrated lighting solution and large louvre blades for sun shading

Open Canteen and Fitness Area

With a maximum capacity of 200 people, the canteen on the ground floor of the academy falls significantly below the volume that would have necessitated special requirements as stipulated by the German meeting place regulation (Versammlungsstättenverordnung, VStättV). This allowed the transitions to the fitness area to be left open, without doors or partition wall systems for fire protection. The roof construction above the fitness studio on the ground floor of the academy was implemented as EI 90 in order to provide protection from flashover to the adjoining higher construction.

Coordinated Planning

The fact that the structural work for the fire and smoke protection in the campus is integrated so elegantly in the transparent façade and interior room design is a credit to the careful, collaborative planning.

Early coordination between hhpberlin, Joachim Bauer Architekten and the authorities allowed all application-specific features and design requirements to be taken into account in the planning and design. This has resulted in a solution that meets fire protection requirements while also being an attractive building, in line with the defined safety objectives.

All Images: Schüco International KG
Photographer: Alexander Frank

CONTACT

Schüco International KG
Bielefeld, Germany
Tel.: + 49 521 783 0
info@schueco.com
www.schueco.com

IMPRINT

Published by

Wiley-VCH GmbH
 A Company of John Wiley & Sons, Inc
 Boschstrasse 12 · 69469 Weinheim
 GERMANY
 Tel.: +49 (0) 6201 606-0 · Fax: -791
 info@gitverlag.com · www.gitverlag.com

Managing Directors

- Sabine Haag
- Dr. Guido F. Herrmann

Publishing Directors

- Dr. Heiko Baumgartner
 Tel.: +49 (0) 6201/606-703
 heiko.baumgartner@wiley.com
- Steffen Ebert
 Tel.: +49 (0) 6201/606-709
 steffen.ebert@wiley.com

Sales Managers

- Miryam Reubold
 Tel.: +49 (0) 6201/606-127
 mirreubold@wiley.com
- Dr. Michael Leising
 Tel.: +49 (0) 36 03/8942800
 leising@leising-marketing.de

Wiley GIT Reader Service

65341 Eltville / Germany
 Tel.: +49 6123 9238 246
 Fax: +49 6123 9238 244
 E-Mail: WileyGIT@vuservice.de
 Our service is available for you from
 Monday to Friday 8 am – 5 pm CET

Editorial

- Lisa Holland M.A.
 Tel.: +49 (0) 6201/606-738
 lisa.holland@wiley.com
- Matthias Erler
 +49 (0) 6129 5025300
 matthias.erler@wiley.com

Editorial Assistant

- Eva Kukatzki
 Tel.: +49 (0) 6201/606-761
 eva.kukatzki@wiley.com

Production

- Jörg Stenger
- Andi Kettenbach (Layout)
- Elli Palzer (Lithography)
- Claudia Vogel (Sales Administrator)

European Representatives

- Dave Harvett, Direct Media
 Tel.: +44 (0) 121 705 2120
 daveharvett@btconnect.com
- Oliver Haines, Impressive Marketing
 Tel.: +44 (0) 1743 369611
 impressive.marketing@virgin.net

Bank Account

J.P. Morgan AG, Frankfurt
 Account No.: 6161517443
 Routing No.: 501 108 00
 BIC: CHAS DE FX
 IBAN: DE55501108006161517443

GIT SECURITY is published 4 times per year.

Subscription 2020

4 issues 55.00 €, single copy 16.30 € plus postage. Pupils and Students receive a discount of 50 % at sight of a valid certificate. Subscription orders valid until cancelled, notices 6 weeks before end of the year. Subscription orders can be revoked within 1 week in writing. Dispatch complaints are possible only within 4 weeks after publishing date.

The publishing house is granted the exclusive right, with regard to space, time and content to use the works/ editorial contributions in unchanged or edited form for any and all purposes any number of times itself, or to transfer the rights for the use of other organizations in which it holds partnership interests, as well as to third parties. This right of use relates to print as well as electronic media, including the Internet, as well as databases/data carriers of any kind.

All names, symbols etc. mentioned and/or printed in this issue may be registered trademarks of their respective owners.

Print run: 20,000

Printed by

pva Druck und
 Mediendienstleistungen GmbH
 D-76829 Landau/Pfalz
 Printed in Germany | ISSN 2190-4367



Company Index

360 Vision Technology 11	Genetec . . . Inside Front Cover, 6, 44	Moxa 24	Salto 25
Ajax 58	Hanwha 10, 11, 44	Narda 9	Schüco 57, 60
Altronix 7	HID 24, 43	Nedap 32	Security & Safety Things 8
Apollo Fire Detectors 56	Hikvision . . . 40, 44, Outside Back Cover	NSGate 11	Seetec 32
Assa Abloy 15, 24, 28, 29, 32, 39	Idis 8, 9	Oncam 24	SICK 52
Axis 32	Iloq 10	Onvif 9, 12	Siemens 57
Barox 8	Innosent 43	Optex 13	SimonsVoss Front Cover, 20
Bosch Building Technologies . . . 32, 42	Johnson Controls 32	Panasonic 11	Slat 36, 45
Cepton 48	Ksenia 17	Patol 6	STid 31, 37
Cias 50	Loxal 6	Patriot One 38	TDSi 11
C-Tec 57	Lupus-Electronics 56	PPG 32	Teletek 59
Dallmeier 44	McDonald's 14	Puretech 9	Traka 10
Drägerwerk 54	Messe Frankfurt Middle East 10	Qognify 32	Zaun 6
Euralarm 9, 11	Milestone 8, 32, 44	Raytec 47	
Fiera Milano 6	Mobotix 24	Reed Expositions France 18	

SECURITY MANAGEMENT

Security Management



deister electronic GmbH
Hermann-Bahlsen-Str. 11
D-30890 Barsinghausen
Tel. +49(0)5105/516-01 · Fax +49(0)5105/516-217
info.de@deister.com · www.deister.com
access control; vehicle identification;
biometric verification; guard tour systems;
storing and management of keys and valuables

Security Management



Funkwerk video systeme GmbH
Thomas-Mann-Str. 50 · D-90471 Nürnberg
Tel. +49(0)911/75884-0
Fax +49(0)911/75884-100
info@funkwerk-vs.com · www.funkwerk.com
CCTV, system solution, system integration,
video monitoring security, building management

Security Management



Ksenia Security s.r.l.
Strada Provinciale Valtesino, 49
63065 Ripatransone (AP), Italy
Tel. +39 0735 751646 · Fax +39 0735 652281
info@kseniasecurity.com · www.kseniasecurity.com
Security & Home Automation: We connect homes
by re-inventing security products and solutions

Security Management



NSC Sicherheitstechnik GmbH
Lange Wand 3 · D-33719 Bielefeld
Tel. +49(0)521/13629-0 · Fax +49(0)521/13629-29
info@nsc-sicherheit.de · www.nsc-sicherheit.de
Fire Alarms, CCTV, Voice Alarm Systems

Be Part of the Section



Just send a mail to
heiko.baumgartner@wiley.com
We will be glad to advise you!

ALARM MANAGEMENT

Alarm Management



ABUS Security-Center GmbH & Co. KG
Linker Kreuthweg 5 · D-86444 Affing
Tel. +49(0)8207/95990-0
Fax +49(0)8207/95990-100
info.de@abus-sc.com · www.abus.com
ABUS Security-Center is a manufacturer of innovative alarm systems, video surveillance systems, door intercom systems and detectors. As a member of the ABUS Group, the company is specialised both in industry-specific security requirements as well as the demands which private users have.

Alarm Management



Digisound Electronic GmbH
Oststraße 54 · D-22844 Norderstedt
Tel. +49(0)40/526869-0 · Fax +49(0)40/526869-13
contact@digisound.de · www.digisound.de
Acoustic buzzers, piezo-electric sounders,
electronic beacons, speakers, and transducers

Facility Security

FACILITY SECURITY

Facility Security



deister electronic GmbH
Hermann-Bahlsen-Str. 11
D-30890 Barsinghausen
Tel. +49(0)5105/516-01 · Fax +49(0)5105/516-217
info.de@deister.com · www.deister.com
access control; vehicle identification;
biometric verification; guard tour systems;
storing and management of keys and valuables

Facility Security



Dictator Technik GmbH
Gutenbergstr. 9 · D-86356 Neusäß
Tel. +49(0)821/24673-0 · Fax +49(0)821/24673-90
info@dictator.de · www.dictator.de
Drive units, hold open systems and smoke detectors,
door control solutions

Facility Security



SimonsVoss Technologies GmbH
Feringastr. 4 · D-85774 Unterföhring
Tel. +49(0)89/99228-180 · Fax +49(0)89/99228-222
marketing-simonsvoss@allegion.com
www.simons-voss.de

Digital locking and access control, intelligent locking components with the latest software. System 3060 plants fulfill highly complex requirements in large buildings. They are simply and quickly expandable and work consistently wireless.

Facility Security



Walter Wurster GmbH
Heckenrosenstraße 38-40
D-70771 Leinfelden-Echterdingen
Tel. +49 (0) 711/949 62-0
kontakt@wurster-online.de · www.wurster-online.de
Money handover systems fire resistant up to F90 and bullet resistant up to FB7, cash trays, cash-drawers and facade counters to pass through money, valuables, documents and for installation in high-security areas, banks, petrol-stations, pharmacies, sports – and cultural sites indoors and outdoors.

Video Technology



Abetechs GmbH (Grundig Security)
Steinhof 39 · D-40699 Erkrath/Germany
Tel: +49 211 5380 6832
info@grundig-security.com · www.grundig-security.com
The impressive new GRUNDIG Security IP range covers everything required in modern, professional video surveillance applications.

Video Technology



ABUS Security-Center GmbH & Co. KG
Linker Kreuthweg 5 · D-86444 Affing
Tel. +49(0)8207/95990-0
Fax +49(0)8207/95990-100
info.de@abus-sc.com · www.abus.com
ABUS Security-Center is a manufacturer of innovative alarm systems, video surveillance systems, door intercom systems and detectors. As a member of the ABUS Group, the company is specialised both in industry-specific security requirements as well as the demands which private users have.

Video Technology



Axis Communications GmbH
Adalperstraße 86 · D-85737 Ismaning
Tel. +49 (0)89/35 88 17 0 · Fax +49 (0)89/35 88 17 269
info-de@axis.com · www.axis.com
Network security solutions:
Axis is technology leader in network video and offers intelligent security solutions.

Video Technology




Dallmeier electronic GmbH & Co. KG
Bahnhofstrasse 16 · 93047 Regensburg
Tel. +49(0)941/8700-0 · Fax +49(0)941/8700-180
info@dallmeier.com · www.dallmeier.com
Video security technology made in Germany:
multifocal sensor technology Panomera®,
IP cameras, recording servers, intelligent video
analysis, video management software

Video Technology



Qognify GmbH
Werner-von-Siemens-Str. 2-6 · 76646 Bruchsal
Tel. +49 (0) 7251 9290-0 · Fax +49 (0) 7251/9290-815
Info.emea@qognify.com · www.qognify.com
Qognify GmbH is a leading provider of Video
Management Software in Europe. Since 2000
Qognify has been developing and selling software
solutions for security applications.

Time + Access



deister electronic GmbH
Hermann-Bahlsen-Str. 11
D-30890 Barsinghausen
Tel. +49(0)5105/516-01 · Fax +49(0)5105/516-217
info.de@deister.com · www.deister.com
access control; vehicle identification;
biometric verification; guard tour systems;
storing and management of keys and valuables

Video Technology



VIDEO SECURITY & NETWORK GMBH
**Your reliable partner for
professional video surveillance**
DEKOM Video Security & Network GmbH
Hoheluftchaussee 108 · 20253 Hamburg
Tel. +49 (0) 40 47 11 213-0 · info@dekom-security.de
Member of Dallmeier
www.dekom-security.de · www.dekom-security.at

Video Technology



SANTEC
SANTEC BW AG
An der Strusbek 31 · 22926 Ahrensburg · Germany
Tel. +49 4102 4798 0 · Fax +49 4102 4798 10
santec_info@burg.biz · www.santec-video.com
Video monitoring technology · Video-over-IP
Outdoor IR sensors · Planning and Services

Time + Access



FEIG ELECTRONIC GMBH
Lange Straße 4 · 35781 Weilburg
Tel. +49(0)6471/3109-44 · Fax +49(0)6471/3109-99
obid@feig.de · www.feig.de
Electronic locking systems, identification, access
control, access road control

Video Technology



EIZO Europe GmbH
Helmut-Grashoff-Str. 18
41179 Mönchengladbach · Germany
Tel.: +49 2161 8210 0
info@eizo.de · www.eizo.de
Professional monitors for video surveillance with
visibility enhancement technology and 24/7 use,
IP decoding solutions to connect IP cameras
without any computer.

Video Technology



Intelligent Video Analytics
Securiton GmbH
IPS Intelligent Video Analytics
Kronstadter Str. 4 · 81677 Munich · Germany
Tel. +49 (0)89 4626168-0 · Fax +49 (0)89 46261688
info@ips-analytics.com · www.ips-analytics.com
Manufacturer of high-end video management soft-
ware and intelligent video analytics software for real-
time detection of potentially dangerous situations

Time + Access



GANTNER Electronic GmbH
Bundesstraße 12 · 6714 Nüziders · Austria
Tel. +43 5552 33944
info@gantner.com · www.gantner.com
access control solutions/biometrics,
time management, data capture, locking systems


Video Technology



High Definition Video
www.luna-hd.de

Be Part of the Section
Git BusinessPartner
The Purchasing Section for direct contact
Just send a mail to
heiko.baumgartner@wiley.com
We will be glad to advise you!

Time + Access



ISGUS GmbH
Oberdorfstr. 18-22
78054 Villingen-Schwenningen
Tel. +49(0)7720/393-0 · +49(0)7720/393-184
info@isgus.de · www.isgus.de
Time & Attendance, Access Control,
Biometrics, Plant Data Collection,
Staff Scheduling, SAP Communication

Video Technology



MONACOR
MONACOR INTERNATIONAL
Zum Falsch 36 · 28307 Bremen
Tel. +49(0)421/4865-0 · Fax +49(0)421/488415
info@monacor.de · www.monacor.com
Video monitoring components and systems

**TIME
ACCESS**

Time + Access



PCS Systemtechnik GmbH
Pfälzer-Wald-Straße 36 · 81539 München
Tel. +49(0)89/68004-550 · Fax +49(0)89/68004-555
intus@pcs.com · www.pcs.com
time recording, access control, BDE/MDE,
biometric, video, SAP, Vein Scanner

Video Technology



Panasonic Marketing Europe GmbH
Hagenauer Straße 43 · 65203 Wiesbaden · Germany
info@panasonic.business.co.uk
www.panasonic.business.com/security-solutions
High-quality CCTV solutions (IP & analogue),
Video Automation and IA, Sophisticated technolo-
gies (FacePro, people masking), Cyber Security Pro-
tection for GDPR compliance, VMS: Video Insight

Time + Access



cichon+stolberg GmbH
Wankelstraße 47-49, 50996 Köln
Tel. +49(0)2236/397-200 · Fax +49(0)2236/61144
info@cryptin.de · www.cryptin.de
Operational data collection, time recording,
access control

Time + Access



phg Peter Hengstler GmbH + Co. KG
Dauchinger Str. 12 · D-78652 Deißlingen
Tel. +49(0)7420/89-0 · Fax +49(0)7420/89-59
datentechnik@phg.de · www.phg.de
RFID components for access control, timekeeping, factory
data collection, canteen data, leisure applications, surface-
mounted devices, flush-mounting components, biometrics,
identification media and accessories

Time + Access



primion Technology GmbH
Steinbeisstraße 2-4 · D-72510 Stetten a.K.M.
Tel. +49(0)7573/952-0 · Fax +49(0)7573/92034
info@primion.de · www.primion.de
Time management, access control and management, staff deployment planning, graphic alarm management, SAP communications solutions, pass and ID card production, Biometrics

Time + Access



STid EMEA Headquarter
20, Parc d'activités des Pradeaux
13850 Greasque · France
Tel: +33 (0)4 42 12 60 60 · Fax: +33 (0)4 42 12 60 61
stid-security.com
access control, mobile access, electronic identification, mobile ID readers, vehicle access

FIRE PROTECTION

Fire Protection



Ei Electronics
Shannon Industrial Estate
Shannon, Co. Clare · Ireland, V14 H020
Tel. 00 353 61 471277 · Fax 00 353 61 471053/471140
enquiries@eielectronics.ie · www.eielectronics.com
smoke alarms, heat detectors, carbonmonoxide alarms, RF systems, interfaces, deaf alarms, remote controls, AudioLINK

Be Part of the Section



Just send a mail to
heiko.baumgartner@wiley.com
We will be glad to advise you!

Fire Protection



by Honeywell

Novar GmbH a Honeywell Company

Dieselstraße 2 · D-41469 Neuss
Tel.: +49(0)2131/40615-600
Fax: +49(0)2131/40615-60
info@esser-systems.com · www.esser-systems.com
Fire Alarm systems, voice alarm systems, emergency lighting systems, security systems

Fire Protection



Hekatron Vertriebs GmbH
Brühlmatten 9 · 79295 Sulzburg
Tel. +49(0)7634/500-0 · Fax +49(0)7634/6419
info@hekatron.de · www.hekatron.de
Fire alarm systems, Smoke switch systems, Smoke alarms, Safety linkage systems

Fire Protection



Labor Strauss Group
Headquarters: Wiegelestraße 36, 1230 Vienna, AUSTRIA
Tel.: +43 1 521 14-0
office@lst.at · www.laborstrauss.com
The specialists for fire detection systems and extinguishing control systems

PLANT SAFETY

Plant Safety



Pepperl+Fuchs AG
Lilienthalstraße 200 · 68307 Mannheim
Tel. 0621/776-1111 · Fax 0621/776-27-1111
fa-info@de.pepperl-fuchs.com
www.pepperl-fuchs.com
Security sensors, inductive, capacitive, opto-electronic and ultrasonic sensors, vision sensors, identification systems, interface modules

POWER SUPPLIES

Power Supplies



NSGate
2F, No.53-16, Shcherbakovskaya Street,
105187 Moscow, Russia
Tel.: +7 495 139 6903
www.nsgate.eu · sales@nsgate.com
UPS 150-500VA, off-grid solar systems, outdoor access Nodes NSBox; Climatic control system inside enclosure: Thermostats, Heater, Thermoelectric Cooler; Industrial PoE switches, Ethernet extenders, 4G LTE Routers

Power Supplies



SLAT
Builder of energy continuity
11, rue Jean Elysée Dupuy
69410 Champagne au Mont d'Or – France
Tel. +33(0)478 66 63 60 · Fax +33(0)478 47 54 33
www.slat.com · comm@slat.fr
fire detection, voice alarm, acces control, intrusion, outdoor video surveillance, building automation



Name:
Volker Wagner

Position, Company:
Chairman of the Board of the ASW Federal Association (Alliance for Security in The Economy) and VP Security BASF Group

Date of Birth:
August 25, 1966

Hometown:
Karlsruhe, Germany

Favorite homemade dish:
Pasta

1. Right now: I am in the beginning of my third year as VP Security in BASF SE. After having changed the company and the industry sector, my personal learning curve has been very steep. This has been very exciting, but right now everything feels a bit more stable. So, I believe to now have a much better balance between discovering new ground and relying on experience.

2. My biggest struggles on a workday are the good ideas. I believe that the enemy of the good is the better. Dealing with limited resources and limited financial fundings, we have to prioritize. Every workday, we need to focus on the most promising ideas which means that we have to say goodbye to the good ones.

3. My biggest motivation is driving change in organisations in close collaboration with my team.

4. The best decision in my career so far is to start engaging as a volunteer leader in associations. I have met so many inspiring people and I could build up close networks and friendships all over the world. So come and join me in ASW Germany and ASIS International.

5. The best compliment anyone has ever given to me is that I am a good listener and a competent advisor.

6. At the best job I ever had I served as a paramedic at one stage of the Tour de France. Being a road cyclist addict myself, I was thrilled to watch all the superstars from the front row. Luckily, there had been no accident, so we could enjoy the race.

7. The last thing/gadget I bought was a new headset for my home office. Right now, we are in the middle of the Covid-19 crisis and we all have to deal with a lot of challenges. But there is at least one very positive impact. We have pushed the digitization of our societies and businesses with unknown speed. It is fantastic to recognize the benefits from remote working. Let's stick to it at some extend.

8. The most favorite pieces of clothing I own are my biking jerseys. Riding road bike is my favorite sport for the weekends.

9. My first car was a Renault 4 with the horsepower of 34. With this car, we even went to a skiing trip in the Alps and we never got stuck. The main problem was that the windshield became regularly frozen from the inside because the heating was so overcharged.

10. I had the opportunity to shake hands with German Chancellor Angela Merkel. When I studied at the Federal College for Security Studies in Berlin our small group of students were invited to discuss security challenges with her.

Off the Record

Get to Know Inspirational Characters of the Security Industry in GIT SECURITY's Series



Efficient operation is among the top concerns of any logistics park. The Hikvision Logistic Park Solution not only enhances overall security of the park, but also helps improve operational efficiency with focus on vehicle and goods management through adapting Artificial Intelligence powered functionality.

Reducing Risks and Increasing Efficiency With Ease



Vehicle Management

Improve Efficiency for the Loading Process
and Standardize Driving Behaviors



Goods Management

Quickly Locate any Problem with
Visualized Parcel Tracking

Hikvision Headquarters

T +86 571 88075998
overseasbusiness@hikvision.com

 @HikvisionHQ
  @HikvisionHQ
  @Hikvision

HIKVISION[®]

www.hikvision.com