



- Security for Retail
 - Special Perimeter Protection
 - Fire Protection
 - Video Analytics
 - Personal Protection
- COVER:** ASSA ABLOY
New Incendo Business



Think beyond video. Think Genetec.

Securing your organization requires more than video surveillance. To be successful, you need access control, intercom, analytics, and other systems too. This is where our Security Center platform excels.

It delivers a cohesive operating picture through modules that were built as one system.

So, whether you're securing an airport, a parking structure, a multi-site enterprise, public transit or an entire city, you can access all the information you need in one place.

To learn about the benefits of unifying your security operations visit [genetec.com](https://www.genetec.com)

Genetec[™]



Dear Readers,

We hope you had a good start in 2021 and your personal life and your business is not affected too much by the pandemic.

With most parts of the EMEA region still in lockdown or partial lockdown in the first months of 2021, it now looks like only a few local security and safety events will take place in the first half of 2021. With this background and based on the great experience we had with our first virtual event Wiley Industry Days in November 2020, we decided to offer our platform again in June 2021. The next edition of Wiley Industry Days will be held June 7th to 9th. Stay tuned for more information coming soon. The registration for the event is already open via www.wileyindustrydays.com.

In this issue we have a strong focus on fire protection and the safety aspects of our business. We have talked to industry leaders to get a feeling for market trends and we give you an overview about the innovations in these rather conservative markets. To promote product development in general, every year we recognize the best products with GIT SECURITY AWARD. In preparation to the next round of the award, we are asking our partners to submit new products via www.security-award.com. The closing date for applications is March 31st.

In this issue we have asked five leading manufacturers about their approach for perimeter protection on page 18. The answers show five different approaches to reach one common goal: How to effectively protect perimeters with as little false alarms as possible.

The next layer of protection in a security concept are access control solutions and we shine a light on some of the best solutions available starting on page 28. We think it is very impressive how innovative the market for access control is at the moment and how well the solutions are accepted by security officials and end-users.

Stay safe and enjoy reading this issue!

Heiko Baumgartner
For Wiley's Safety and Security team

COVER STORY

28 A Foundation For Access Control
Assa Abloy

14 Per Björkdahl
ONVIF

16 Florian Matussek
Genetec

MANAGEMENT

- STANDARDS**
- 14 Continuing The Connection**
Four Trends That Will Drive the Security Industry in 2021
- VIDEO MANAGEMENT**
- 16 Stand and Deliver**
What Can You Expect from Video Analysis?

SECURITY

- 18 5 x 3 Questions**
Perimeter Protection
- PERIMETER SECURITY**
- 22 The Invisible Wall**
Choosing the Most Appropriate Perimeter Security System
 - 24 Seen, Unseen**
Perimeter Protection Can Use Radar to Anticipate Intrusions
- INTRUSION DETECTION**
- 26 A Picture for the Intruder**
Photo Alarm Verification: Reducing False Alarm Probability

- COVER STORY**
- 28 A Foundation For Access Control**
Platform-Based Access Management can Meet the Security Challenges of the Next Decade
- ACCESS CONTROL**
- 32 Smart Phone Access**
Gallagher Installs Bank Access Control Using Smartphones
 - 34 IoT Ready**
Salto Neo Electronic Cylinder Gains BSI Enhanced Level IoT Kitemark
 - 36 Residential Cloud**
Cloud Based Access Control Technology Takes up Residence At Ealing Council



WILEY

Welcome to the knowledge age.

Wiley builds on its 200-year heritage by partnering with universities, businesses, research institutions, societies and individuals to develop digital content, learning, assessment and certification tools.

Wiley continues to share and deliver the answers to the world's challenges helping you to further your mission.

WILEY



38

Vincent Dupart
STid



56

Ulrich Balbach
Leuze



60

Alexandra Kovacs
Hoffmann Group

38 Under Control

Combining High Security and Intuitiveness for Vehicle Access Control

39 Wireless Access Control – The Future

A New Wireless Access Control Report Identifies Trends in 2021

KEY MANAGEMENT

40 Joint SecurityPlan

The Merits of Access and Key Control for Cannabis Security

42 Retail

Security Solutions for the Retail Industry



FIRE PROTECTION

FIRE DETECTION

45 Hotel Fire Detection Refreshed

Solutions from Global Fire Equipment for Two Luxury Hotels

FIRE SAFETY

46 European Market Trend: Fire Safety 2021

Fire Safety in Europe: Seven Layers of Fire Protection



50 Anti-ligature and Anti-vandal

Resolving Fire Detection Challenges in Secure Mental Health Environments

52 Hot Stuff!

Preventing Fires in the Recycling Industry

54 A Sweet Solution

Diamant Zucker: a Fire Protection Solution using Oxygen Reduction

SAFETY

SENSORS

56 Focused on the future

Interview with CEO Ulrich Balbach

PERSONAL PROTECTION

58 Additional Safety For Lone Workers

Budenheim Supports Staff With a Soloprotect Personal Safety Solution

PERSONAL PROTECTIVE EQUIPMENT

60 Safety Up, Costs Down

Holistic concept required

Wiley Industry Days
WIN DAYS
 7.-9. June 2021
 Register for free
www.WileyIndustryDays.com

SECTIONS

- 06** Security News
- 63** Company Index | Imprint
- 64** BusinessPartner
- 67** Off the Record
Lucio Mattielli

www.GIT-SECURITY.com

REGISTER NOW for our
free NEWSLETTER



Eagle Eye Networks Appoints Enterprise Sales Manager in EMEA

Eagle Eye Networks has appointed David Barr as Enterprise Sales Manager for Europe to build the Enterprise Market Segment throughout the region. David has 30 years of experience in the security industry, joining Eagle Eye Networks after 17 years with Xtralis Adpro, which in recent years was acquired by Honeywell. In his new role, David will work with Eagle Eye Networks global and EMEA end users and partners to develop their strategy, as the security market transitions from an on-premise recorder market to a true cloud market for video surveillance.



www.eagleeyenetworks.com

Jeff (Chae Won) Lee new Managing Director at Hanwha Techwin Europe

Having worked for the Hanwha Group for over 21 years, most recently as Hanwha Techwin Europe's Sales Director, and with a Master of Business Administration (MBA), he has an exceptional track record of delivering on strategic objectives and a wealth of knowledge and experience of growing businesses.

Jeff takes over the role of Managing Director from Bob (H.Y.) Hwang Ph.D., who is returning to Korea to take up another senior management position. "I am delighted to be given the opportunity to lead the highly professional, knowledgeable and talented Hanwha Techwin Europe team," said Jeff Lee. "They all share a passion for backing up our formidable line-up of video surveillance solutions, with the highest possible levels of pre- and post-sales support."



www.hanwha-security.eu

Sepura Appoints Head of Hardware

Sepura have made an addition to their product team with the recruitment of Dr. Heather Rolls as their new Head of Hardware Development. Rolls has joined the global critical communications supplier at a crucial time to lead their development of next generation Sepura devices. Rolls will head up a team of engineers designing Sepura's powerful radios, using experience gained in developing mission critical products for the security and defence market. Speaking about her new role with Sepura, Rolls said: "I am really excited to be joining Sepura at such an exciting time in its history, as it looks to bring to market intelligent solutions to support public safety users. My experience is very much in matching user requirements to industry capability to produce true innovation. Sepura is a great home for me given the company's history in breaking new ground within critical communications."



www.sepura.com

Support for British Superbike Team Renewed

Tyco, the security products brand of Johnson Controls, has announced its secondary sponsorship of the Synetiq BMW Motorrad team for the 2021 British Superbikes season. Johnson Controls intend to organize technology days at selected



British Superbikes events taking place during 2021. Before watching Synetiq BMW Motorrad's Andrew Irwin and Danny Buchan compete against 24 riders representing 14 other Superbike teams, invited business partners and their customers will be able to see Tyco brands, such as Exacq, Kantech and Illustra. In addition to a wide range of solutions helping businesses operate safely during the pandemic, the guests will also be able to learn more about how Artificial Intelligence (AI) is being infused into the Tyco product portfolio, as well as how they can generate new business with the help of Cloudvue, the Johnson Controls Cloud based subscription service.

www.synetiqbmw.com

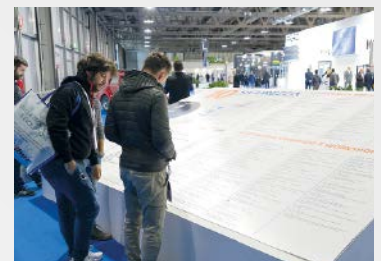
Gunnebo Invests in a State-of-the-art Facility in the USA

A new state-of-the-art facility in Milford, in the Cincinnati, Ohio area will replace the three existing operations that Hamilton, a Gunnebo Company, operates in the area. The investment will enable several business strategic gains such as increased efficiency, reduced environmental impact and strengthened customer experience. The investment is estimated to amount to approximately MSEK 180 and is expected to be completed by the end of 2021. The long-term strategic investment in the USA involves the re-location of three operations under the same roof. The business will be able to serve all parts of Gunnebo's value chain; from R&D and innovation via production, to sales and showroom for products. The facility will be an innovation hub for Americas and mainly produce safes, vaults and drive-up systems for banks and retail as well as solutions for cash management and GSA.

www.gunnebo.com

Sicurezza: Appointment Confirmed for November 2021

Fiera Milano, after reorganising its exhibition calendar for next year, has scheduled a new date for "Sicurezza", reference event in Europe for security and fire-fighting, which will be postponed by just one week; it will in fact take place from 23 to 25 November 2021, again at the same time as Smart Building Expo. The exhibition formula remains unchanged, aimed at encouraging meetings between manufacturers and buyers to monitor the evolution of a very interesting and constantly changing market. Fiera Milano's objective is to consolidate the event as the only international appointment for its sector in Italy and to be not only a showcase for innovation, but also an essential training opportunity for all those involved.



www.fieramilano.it

Talent LMS

Online Training Platform



-  SPECIALIST
-  GOLD
-  SILVER
-  SELECTED

Hone your professional skills with the TalentLMS training platform and become a Ksenia Security Systems Specialist!

Join the training courses and achieve new Certifications by progressing through the categories:

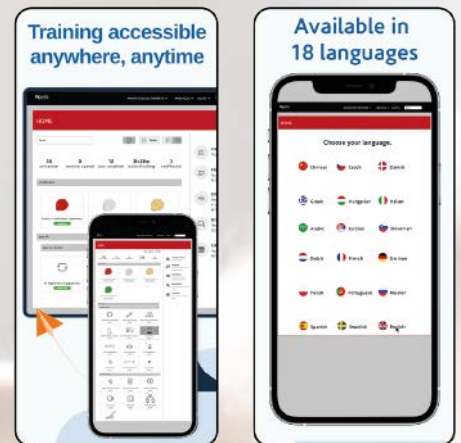
- Selected Installer;
- Silver Certified Installer;
- Gold Certified Installer;
- Specialist Certified Installer.

Thanks to this e-learning approach, you will have valid support for your technical training.

LMS Platform is plenty of educational contents on all technical aspects of our solutions. By participating, you will boost your visibility on our website and on the 'lares 4.0' end-user app, giving you the chance to acquire new customers through free advertising.

In 2020, we trained over 1.250 Installers, for over 6000 hours of training, helping to reduce CO² emissions by nearly 34 tons, saving the equivalent of over 1.000 trees.

The free TalentLMS App can support you while listening and watching the video tutorials wherever you are and at any time you want. Download the TalentLMS App and start your growth path now!



www.kseniasecurity.com

TalentLMS mobile is the perfect companion for delivering offline learning, microlearning, and microcertifications.

The new dimension of Security

THE MOST INNOVATIVE IoT SOLUTION FOR SECURITY AND HOME & BUILDING AUTOMATION

Back-to-business Video Technology: Creating a Health and Safety Policy

Today's intelligent AI-powered cameras provide vital screening services to organizations striving to get people back to business. These cameras can measure someone's skin temperature and check if they're wearing a mask or not; they can carefully monitor crowd density, flagging when there are too many people in a certain location; and they can accurately measure the distance between people, helping to uphold local social distancing regulations. But for this technology to deliver its full potential, businesses should also consider key HR and legal matters that may affect all those coming into view of the cameras. These considerations can be woven into a custom Health, Safety and Welfare policy, which is understood and adhered to by all.

1. Make Sure Your Staff are on Hand and Informed

First of all, you need to ensure there are staff available to support the screening process at your premises, and that they know exactly what they're expected to do. Consider temperature screening, for instance. Who is going to be present to monitor temperature readings? And if someone does have a high temperature, what happens next? Moreover, what will you do if someone objects to having their temperature screened? Such things need careful consideration.

2. Consider Employee Consent and Privacy

It's also vital that staff fully understand that they are being screened, and that they agree to it before you do it. You should clearly inform employees of the video technology, the nature and extent of the monitoring, and its purpose, clarifying what has changed from your normal policies. It's recommended to get official written employee consent for being screened. The data of a human subject's body temperature generated during automated temperature measurement is not defined as a 'personal data' under certain data protection laws. However, it cannot be ruled out that data protection law does apply in the case that it's possible (even subsequently) to identify the people passing the cameras.

3. Tailor Your Policy to Your Business

Of course, every business is different. So when devising your own health and safety procedures, it's vital you tailor each element to your business, your environment and your policies. What's more, it's important to check changing guidance and requirements for your geography regularly. You may want to consider getting legal advice, so that you get this part of the process absolutely right. www.hikvision.com/en

Skills for Security announce Class of 2020 and Apprentice of the Year

Skills for Security has awarded Matthew Aindow Apprentice of the Year after scoring 93% in his End Point Assessment (EPA). They have celebrated almost 30 apprentices completing their Fire, Emergency and Security Systems Apprenticeship over the course of the last year. Their 2020 Apprentice of the Year Matthew completed his apprenticeship with EFT systems, who are one of the leading fire and security installers in the UK. EFT recruit 28 apprentices throughout the business, with most of these on the fire and security apprenticeship programme with Skills for Security. www.skillsforsecurity.org.uk

LenelS2 Integration with Seek Thermal's Contactless Thermal Imaging



LenelS2 announced the integration of its OnGuard and NetBox access control systems with Seek Thermal's Seek Scan thermal imaging system. The new integration allows businesses to identify individuals with elevated skin temperature through a contactless solution and allow or deny entry based on this reading. The integrated solution joins the Carrier Healthy Buildings Program suite of offerings to help deliver healthier, safer, more efficient and productive indoor environments. LenelS2 is a part of Carrier Global Corporation, a leading global provider of healthy, safe and sustainable building and cold chain solutions. www.lenelS2.com

Anixter Global Distribution Deal with Quanika

A landmark global distribution deal between Anixter and Quanika opens a one-stop-shop supply route for major integration projects, making it easy to incorporate Axis and Milestone video tech with Quanika's access control and visitor management software, and it allows off-the-shelf integration with a wide range of third-party systems. The global distribution deal with Anixter streamlines delivery of major integration projects across private and public sector markets. ICT and security systems integrators can now purchase Quanika software direct from Anixter to integrate a full choice of vendor technologies, ensuring efficient procurement and giving them everything they need for project delivery. www.quanika.com

Predictive Analytics Technology to Improve Health of Abu Dhabi Residents

The Department of Health - Abu Dhabi (DOH) and Malaffi, the region's first Health Information Exchange (HIE), showcased a population risk management analytics platform at Gitex. The technology will empower the healthcare sector to support care management, improve population health and assist in ensuring continuity of care. The risk management solution, which is supported and provided by Malaffi, uses advanced AI analytic technologies such as machine learning, to build predictive models based on the clinical data and create algorithms that run in near real-time to predict cost, admissions, emergency department visits, readmissions, and diseases. Drilling down from the population to the physician and individual level, the insights will be used to predict risk, improve overall efficiencies and health outcomes. <https://malaffi.ae>



Panasonic i-Pro and Mobotix Partner on a Thermal Camera Solution



Panasonic i-Pro Sensing Solutions Corporation of America announces the availability of a new thermal camera solution aimed at helping organizations maintain the health and safety of those entering their facilities. This solution combines Mobotix M16/S16 cameras with the functionality of a new plug-in from Panasonic i-Pro's Video Insight video management systems (VMS) to automatically detect when an individual's body temperature exceeds a pre-set threshold and provides an alert to the appropriate personnel. "We are committed to developing and delivering better solutions to help organizations restore and maintain operations during and after the global Covid-19 pandemic," said Bill Brennan, President, Panasonic i-Pro Sensing Solutions Corporation of America. Panasonic i-Pro's Video Insight VMS plug-in and Mobotix thermal cameras combined functionality trigger an alarm when a user-defined, pre-set temperature threshold is detected. The solution can define multiple areas of interest to set up temperature readings and can be set up in either Celsius or Fahrenheit. The system also allows you to edit the temperature threshold and review the detailed thermal readings at any time.

www.mobotix.com · business.panasonic.co.uk/security-solutions

Gallagher Safeguards Oman Electricity Transmission Company

Based in Muscat, Oman, the Oman Electricity Transmission Company (OETC) owns and operates the main electricity transmission network, transferring electricity from generating stations to distribution load centres in all governorates of the Sultanate of Oman. Protecting the company's assets while ensuring the safety of the public is central to ensuring business continuity and reliable distribution of electricity. With 90 grid stations in remote locations, identifying and responding to unauthorized intrusions in a timely way was challenging. Members of the public were also entering the sites to have picnics, unwittingly risking injury or even death. OETC required a robust perimeter security system to deter intruders, manage risk and protect the public from harm. Using Gallagher's effective and reliable fencing solution, perimeter breach attempts are deterred by an energized pulse, delivering a short but safe shock. The Gallagher Z20 Disturbance Sensor in use at the gate heightens perimeter security by ensuring continuous monitoring and detection of vibration or movement of the gate when it is closed and the system is in an armed state. The ability of Gallagher technology to easily integrate with CCTV cameras, automated lighting and a remote monitoring system further ensures a safe and secure environment. Gallagher perimeter control solutions are now under construction or completed at 70 of the remote grid station sites - including over 25 kilometres of monitored pulse fencing. Unauthorized entry to these sites has been reduced to zero.

<http://security.gallagher.com>

Zenitel Names Chris Rinket Western Europe Sales Manager

Chris Rinket has been appointed Western Europe Sales Manager in Zenitel's EMEA Safety & Security Business Unit. Chris joined Zenitel on January 1st. He has 20 years of experience in the security industry, where he gained in-depth knowledge of CCTV, Access Control and Integrated Security Systems and solutions. As Area Sales Manager, Chris will be responsible for Zenitel's sales engineering and sales operations, consisting of supporting not only Zenitel Centers of Excellence across the different markets, but also our Strategic Alliances and Technology partners locally, as well as rolling out the Zenitel Channel Partner Program. He is based in the Netherlands and will cover Belgium, The Netherlands, Luxembourg, Germany, Austria, and Switzerland.




www.zenitel.com

ADT receives BSIA Founder Member Award




The British Security Industry Association (BSIA) has awarded ADT Fire & Security a Founder Member Award for supporting the Association for over 50 years. Members are being recognised for 25+ years with the Association, and the Founder Member Award underlines those companies who were and remain the foundation blocks which have helped shape how the BSIA operates. Mike Reddington, Chief Executive, BSIA said: "The BSIA founder member award serves to recognise the hard work, dedication and active participation shown by those companies who have not only supported the Association over the years, but have helped mould it into what it is today, as the recognised 'voice of the professional security industry'."

www.bsia.co.uk




Secured network products and DC UPS solutions.

We protect your critical applications in buildings and cities.



Managed Layer 2 Switch, 8 PoE/ PoE+/HiPoE ports + 2 fiber optic ports, Micro-UPS (Li-ion battery), 180 W



www.slat.com

Dahua Obtains ISO/IEC 27701 Certificate from BSI

Dahua Technology has obtained ISO/IEC 27701 Certificate from British Standards Institution (BSI). ISO/IEC 27701 is a privacy extension to the popular ISO/IEC 27001 Information Security Management and ISO/IEC 27002 Security Controls. As an international management system standard, it provides guidance on the protection of privacy, including how organizations should manage personal information, and assists in demonstrating compliance with privacy regulations around the world. According to the certificate, Dahua Technology operates a Privacy Information Management System which complies with the requirements of ISO/IEC 27701:2019 for the registered scope that is planning, design and development of Dahua Technology's security surveillance products and associated software platform (including DSS series and ICC series). Mr. Liu Zhe, Vice President at BSI China, said: "Dahua Technology is the first enterprise in the global security industry that has acquired ISO/IEC 27701 certificate, and this fully demonstrates the company's perspective and continuous practices in data security and privacy protection." www.dahuasecurity.com

Education Courses Emphasizing Entrance Security

Boon Edam announced a new continuing education course approved by the American Institute of Architects (AIA) entitled, "Closing the Gap in Physical Security: Addressing the Entry." Architects can view this one-hour presentation in exchange for one Health, Safety and Welfare Continuing Education Unit (HSW CEU) towards their AIA accreditation. The course focuses on the role of security entrances in building design and a physical security strategy, including integration with other security technologies, safety and code requirements, and the impact of pandemics on the entry. The course begins by explaining the importance of controlling access to buildings through designs that address securing the entry. Architects learn the risks and associated liabilities that impact an organization when they fail to put effective measures in place to mitigate unauthorized access at their buildings. www.boonedam.com



Mayflex Launches 2021 Campaign

Mayflex, the distributor of Converged IP Solutions, is launching a new campaign that will run throughout 2021 and focus on the strapline 'Your Trusted Partner for Security Solutions' highlighting the excellent service and support that Mayflex can provide with regards to security solutions. Tom Filce, Mayflex Director of Sales for Security solutions commented 'Some people might associate Mayflex with infrastructure and data cabling, but we have actually been distributing security solutions since 2007. Over the last 14 years we have very much established ourselves as a leading security distributor with a focus on IP technology.' Tom continued 'We have built an exceptional team of associates focused around selling and supporting security solutions, many of which have been in the industry for years and have extensive knowledge and experience that make them a great asset for our customers in helping them to choose the best solutions to meet their varying requirements.' <https://mayflex.com>

Polish Electricity Supplier Energa-Operator works with Motorola Solutions

The digital radio network ensures secure and reliable communications for Energa-Operator's workforce and corresponding emergency organizations. Continuity of electricity supply, regardless of prevailing conditions, is critical to a nation. Ensuring constant power supply regardless of the conditions or environment is critical for a society to function and thrive. Energa-Operator's electricity distribution network covers 24 percent of Poland's landscape. As one of the largest energy suppliers in Poland, the company is the first to have successfully deployed a modern, digital, independent and reliable critical communication system from Motorola Solutions over their entire territory and operations. The resilient and secure system allows Energa-Operator to provide reliable electricity supply and service to 2.9 million private and 200,000 business customers. Energa-Operator has relied on Motorola Solutions TETRA technology since 2015. Over the past years the radio-communication network of Energa-Operator has been successively expanded over its entire territory and operation. Currently, Energa-Operator's network consists of over 145 base stations, and by the end of 2021 the planned expansion includes a further 20 stations. This makes the project the largest Tetra installation used by a utilities company in Europe. www.motorolasolutions.com



Vienna Headquarter for Genetec




Genetec announced the opening of its 16th global office in Vienna, Austria. Ideally located to support the company's expanding footprint in Central Europe and serve as a hub for the DACH region, the new headquarters in Vienna will support the company's fast-growing R&D, regional sales and support teams. With a multilingual staff representing eighteen nationalities, the Austria team brings a unique mix of different cultures and ideas. Following the acquisition of Austrian video analytics company KiwiSecurity, the Vienna-based R&D team will focus on multiple areas including privacy and video analytics solutions that enable customers to protect people's privacy while increasing security and operational efficiency. A fast-growing company, Genetec continues to expand its DACH operation and is actively recruiting talented individuals to join the team throughout that region. www.genetec.com




Keyless and mobile smart access:


The most efficient, secure, and convenient way of securing your building and assets.

Manage the security of your site 24/7 easily with an advanced, reliable electronic locking technology that meets all of the security requirements and more. Ensure facility security and accessibility to efficiently manage your building while providing a better user keyless and mobile experience.

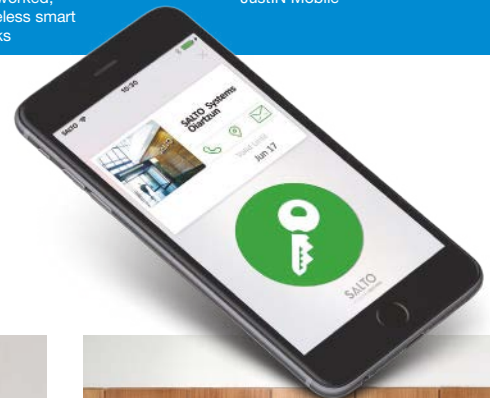
 **Easy retrofitting:** These solutions make smart access to any door possible.

 **Smart access technology:** High-performance access control management platform to make it easy to get critical and routine tasks done.

 **Keyless access:** Mobile-compatible on-premise and cloud-based access control technology solutions.

 **State-of-the-art security:** Manage digital keys, monitor all door activity, and assign different access levels to users.

- 
 Totally wire-free: Stand-alone, virtually networked, wireless smart locks
- 
 Digital key - BLE /NFC & RFID
- 
 SVN SVN-Flex BLUeNet Wireless Justin Mobile
- 
 Built to cover every access point.



Electronic Cylinders: SALTO Neo



Electronic Locks: SALTO XS4 One



Electronic Locker Locks: SALTO XS4 Locker

Emergency Response at Swedish Sea Rescue Society

Swedish Sea Rescue Society in Sweden have enhanced their existing Sepura critical communications solution by upgrading to include Over the Air Programming, saving the team time and reducing costs whilst improving their programming capability. Supported by Sepura's Swedish partner Northcom, the rescue organisation has been able to implement powerful changes to its programming capability by programming radios wirelessly, with no requirement to bring all radios into a programming station. The upgrade means that the organisation's fleet of Sepura SC Series terminals can be re-programmed or updated whenever they are connected to a secure Wi-Fi connection, and without needing each individual radio to be physically connected to a programming device. With radios based in multiple locations and shift working affecting when they can be made available for upgrades, this significantly eases the process of performing fleet wide updates.



www.sepura.com

Idis: Acquisition of KT Powertel

Idis has acquired a controlling (44.84%) stake in KT Powertel, the radio communications subsidiary of telecoms giant KT Corp. The move will strengthen Idis's offering in the security and safety sectors, with customers to benefit from powerful push-to-talk over cellular (PoC) communications solutions, and an emerging generation of advanced safety and security systems encompassing a range of IoT devices. KT Powertel has been leading the development of LTE broadband wireless radio technologies in Korea's domestic market. The acquisition will now enable Idis to capitalize on this expertise in South East Asia and expand its capabilities globally. The move will strengthen the company's position as a provider of complete, end-to-end video solutions that are easier to install and that offer true flexibility and ease-of-use, and deliver on the promise of low total cost of ownership.

<http://idisglobal.com>

Gunnebo with Four New Distributors in Europe

Gunnebo announced new distribution partnerships with European industry specialists in four geographic sectors. The new distributors are:

- Profsafe in Sweden, Denmark, Norway and Finland
- Loomis in Finland
- Nauta in the Netherlands
- Ferrimax in Italy

Pursuing its strategic plan, Gunnebo is forging a partnership model for sales and distribution of safes under the Chubb safes brand. An important aspect of Gunnebo's approach in its Safe Storage Business Unit is to differentiate its go-to-market model between direct and indirect sales for Chubb safes products. Profsafe AB has almost 30 years of experience in delivering safe storage solutions in the Nordics and is part of the Lagercrantz Group AB. Loomis Suomi Oy is the Finnish branch of Loomis, the global cash handling company. Nauta Security Storage BV is active in the Dutch and Belgian markets, supplying a range of safes and locks. Ferrimax is a leading physical security company in southern Europe. The partnerships are all in place from January, 2021.

www.gunnebo.com

The Open Security & Safety Alliance joins Euralarm

The Open Security & Safety Alliance (OSSA) announced it has joined Euralarm, the association of European manufacturers, installers and service providers from the electronic fire safety and security industry. By joining the Security Section within Euralarm, OSSA will contribute valuable expertise in the domain of Internet of Things (IoT), while leveraging on Euralarm's profound relationships in the European security and safety markets. "Digital technology is transforming how we all connect with people, places and things – and this evolution offers big – literally life-saving – benefits and possibilities to the fire, security and safety space," said Paul van der Zanden, General Director, Euralarm. "The member companies that make up OSSA are some of today's strongest innovators and leaders within the video security and building technology categories. Sharing their collective expertise into programs we have in the works makes good sense as we together can lift up the same industries to benefit those we work hard to serve, save and protect."

www.euralarm.org · www.opensecurityandsafetyalliance.org

Assa Abloy and Nedap: Optimizing Access Control with Integration

Aperio wireless locks from Assa Abloy Opening Solutions now integrate seamlessly with the versatile Aeos access control by Nedap to bring a range of concrete business benefits. Optimizing access control with these battery-powered wireless locks can boost convenience for building users and help make better use of spaces. Existing Aeos users can integrate battery powered Aperio devices to extend the reach of their system. Or, by combining Aperio with Aeos, users can build a cost-efficient, wire-free access control system from scratch. Aperio cylinders, escutcheons, and locks with online or offline capability can be implemented alongside existing or new wired doors connected to Aeos. This gives security managers more control over additional rooms or other defined areas at their premises.



www.assaabloy.co.uk · www.nedap.com

Brexit and Covid haven't Stopped iLoq Bringing Locking to the UK Market

iLoq has started 2021 with a bang by extending its operations into the UK. Founded in Finland in 2003, iLoq currently has sales offices in 8 countries throughout Europe, operations in Canada and a partner network around the world. Adding the UK to its portfolio continues to fulfill the Company's growth strategy and allows iLoq to introduce the benefits of its battery-free digital locking and mobile access sharing technology to a huge new market. Strong new building construction activity and retrofitting of existing buildings is supporting the growth of the locking industry in the UK. iLoq has capitalized on new opportunities offered by digitalization and the internet of things to create a smart locking system that provides even more added value for customers. For building owners, operators and key holders, the new features and benefits offered by iLoq's battery-free digital locking and mobile access solutions bring high security and unparalleled ease of access management paired with major lifecycle cost savings.

www.ilq.com

BSIA Launches Ethical Automated Facial Recognition (AFR) Framework

The British Security Industry Association's (BSIA) video surveillance section has launched an ethical and legal use guide for Automated Facial Recognition (AFR). The guide is the first of its kind, following recommendations on responsible use of Artificial Intelligence (AI) by the Organisation for Economic Co-operation and Development (OECD), and encompasses useful terms and abbreviations, ethical uses, and more. The guide has a specific focus on distinctive application types verification (is it you?) and identification (who is it?). Both industry experts and the general public should be able to understand the framework as it is aimed at all levels, whilst matching key messaging with that of the UK Government's Surveillance Camera Commissioner. Dave Wilkinson, Director of Technical Services at the BSIA who is leading the BSIA's AFR working group said: "This collaborative piece of work among industry experts has produced a guide with advice and recommendations on ethical and legal AFR usage, which will appeal to anyone in or out of the physical security industry. Its aim is to ensure it does not cause harm or discriminate against any persons in either a public or private setting. www.bsia.co.uk



Puretech Systems Integration with Hensoldt Spexer 360 Radar

Puretech Systems announced the successful integration of the Hensoldt Spexer 360 Enhanced Radar into the PureActiv Geospatial Command and Control solution. This deep integration enables users the ability to adjust the radar performance parameters within the PureActiv AlertView geospatial command and control client software. The enhanced radar system is deployed on Mobile Video Surveillance Systems designed for border protection and is available for general relocatable and fixed location government and commercial deployments. Spexer 360 is a lightweight, low power, X-band radar, designed to be deployed on a variety of platforms. Its many capabilities include situational awareness for military and CNI, drone detection, and flexible deployment options. Coupled with the capabilities of PureActiv, the solution provides 360 degrees of detection, PTZ camera slew-to-cue, Puretech's deep-learning based object classification, camera auto-follow, and optional acoustic deterrent control. www.puretechsystems.com

Wiley Industry Days 07.-09. June 2021

WIN DAYS

Contact: Miryam.Reubold@Wiley.com · Joerg.Wuellner@Wiley.com

IP DECODING SOLUTIONS FOR SENSITIVE INFRASTRUCTURES

EIZO IP decoding solutions are designed for the computerless connection of security and surveillance cameras. They are built for 24/7 use and feature the highest reliability and durability.

- ◆ High-performance decoding technology
- ◆ Data security for live data
- ◆ VMS-independent fallback solution
- ◆ Easy and clean installation
- ◆ Low TCO (Total Cost of Ownership)



Learn more:
www.eizo.eu/ip-decoding



STANDARDS

Continuing The Connection

Four Trends That Will Drive the Security Industry in 2021



Despite continued pandemic-related challenges, the security industry has seen a renewed focus on technologies used to mitigate risks associated with Covid-19. In 2021, this will likely continue, as industries across the globe shift the way they conduct business. Per Björkdahl, who is the current Chair of the ONVIF Steering Committee, tells us about his expectations of the coming year.

Technologies such as occupancy management, automated visitor management and touchless access control applications are increasing in demand – turning up the dial on interoperability as organizations seek to deploy best-of-breed solutions. To power these technologies, artificial intelligence (AI), cloud storage and the Internet of Things (IoT) are driving new functionalities and new uses from existing technologies to deliver customized applications for pandemic-related health, safety and security issues. While this year might bring a number of uncertainties, we remain confident that the industry will continue to see growth and demand for these trends.

AI and IoT Gain Mainstream Attention

It comes as no surprise that the biggest security trends we anticipate seeing in 2021 will be a continuation from last year – IoT and AI. As IoT and AI blend together, each is needed to become more efficient in general. IoT has laid the foundation for AI and video analytics to be very impactful in 2021. As IoT-connected devices rise and the demand for integrations of smart applications accelerates, these technologies – once novel to the security industry – are becoming more mainstream. This increased focus is leading to more investment in analytics, as organizations search for solutions

to adapt to the new way of life, while reopening economies and rebooting infrastructure.

Video Analytics to Mitigate Covid-19 Threats

This past year, we saw the pandemic act as a catalyst, spurring innovation and creating new technologies as well as offering new uses for existing technologies. Video analytics were one such technology, as many of the touchless and thermographic solutions used to help mitigate health risks and reopen businesses would not be possible without video surveillance.

For example, the use of video analytics to determine occupancy levels in commercial buildings and detect social distancing are soon to assist smart cities. While this doesn't necessarily mean public skepticism towards video surveillance has decreased, it has enabled the industry to show the breadth and depth of possibilities within the video analytics field outside of more commonly-known technologies, such as facial recognition. The disruption caused by Covid-19 has opened up opportunities for video surveillance to prove its value beyond simple video recording, providing organizations across the board with valuable business intelligence for pandemic uses and beyond. At the end of the day, it

has highlighted additional use cases and opened up the conversation about adoption of such technologies and new markets where they may be applied.

The Cloud's Value Continues to be Realized

In early 2020, we spoke about how the security industry was truly embracing the cloud, specifically in the IoT space, as worldwide spending on cloud services and infrastructure was steadily increasing. As we enter 2021, we feel confident that this trend will continue to increase, as pandemic (and post pandemic) requirements offer myriad opportunities in the cloud space. While the cloud is by no means new to security, the growth in video surveillance in the cloud is now being propelled by both security and non-security uses.

Offering cost-effective price points, cloud solutions provide ongoing flexibility and a variety of opportunities for organizations of all sizes – meeting operational needs that are heightened or accelerated by the Covid-19 pandemic. Many businesses are re-evaluating traditional usage of their existing technologies or seeking other methods to assist with day-to-day operations. The cloud can assist businesses with the remote monitoring of vacant spaces or provide additional coverage where less staff

eCLIQ:

The key to electronic locking

Per Björkdahl

Per Björkdahl is the current Chair of the ONVIF Steering Committee and has been since the fall of 2012. Per is involved with Onvif's conformance initiatives and represents the member-driven organization as a speaker at trade shows, technology events and to the media at large. His professional career includes a lifelong commitment to technical convergence with Axis Communications and companies like TAC (now part of Schneider Electric), advocating the acceptance of communications standards in the building automation industry. Per has worked in the physical security industry for more than 25 years and was an early supporter of IP technology within the industry. Per is Axis Communications' director of business development, a position he has held for more than 16 years.



onsite are required. For small to mid-sized organizations, this remote monitoring can be useful beyond pandemic uses, as it allows for the revoking of access rights, creation of schedules and access control monitoring from a remote location.

Interoperability of Systems Crucial in a Post-Pandemic World

In the light of the increasing number of connected devices and new opportunities in video analytics for pandemic-related uses and beyond, the demand for interoperable systems has only increased. Covid-19 highlighted this need for interoperability, as end users seek to integrate many of the technologies required to continue business as usual. Such technologies include video analytics to assist with occupancy management, the enforcement of social distancing and compliance with facial covering requirements.

For interoperability of IP cameras, or analytics applications with video management systems, Onvif's Release Candidate for Profile M will be a valuable contribution and component for organizations seeking flexible, cost-effective solutions for their smart applications. The Profile M Release Candidate aims to standardize the communication of metadata and event handling of analytics for smart applications. It would allow users to more easily mix and match analytics and camera hardware and software from different providers. And it would provide the possibility of an integration path into IoT systems, with a way to link devices, such as IP cameras, into building

management or other business intelligence platforms.

Greater Choice

To meet the rising demand for smart applications driven by security, business intelligence and IoT devices, clients and devices conformant with Profile M would encourage further growth in the number and types of applications, resulting in even greater choice for end users. Interoperability and the possibilities with Profile M could bring market potential for smaller, innovative companies in the analytics space and freedom of choice for end-users.

The continuation of these trends in 2021 – cloud technology, IoT, AI and expanding uses for video analytics – will garner even more attention than previous years. This is due to the fact that they all blend together, each becoming more efficient with the assistance of the other. Cloud technology is becoming more and more vital and can boost the performance of IoT. Conversely, AI can also benefit from IoT to work more efficiently. Much of this has enabled cloud technology and the rise of IoT to lay the foundation for AI and video analytics. It certainly will be an interesting year, as the security industry and beyond continue to build back from a present and post-pandemic environment.

CONTACT

ONVIF

San Ramon, USA
Tel.: +1 928 395 6773
www.onvif.org



eCLIQ is a durable and secure electronic locking system utilizing web-based software

assaabloyopeningsolutions.eu/ecliq

Experience a safer
and more open world



VIDEO MANAGEMENT

Stand and Deliver

What Can You Expect from Video Analysis?

Video analytics, artificial intelligence, machine learning, deep learning – most people have heard these terms before and think they know what they mean. In practice, however, many quickly flounder when such technical terms need to be explained and differentiated from one another. GIT SECURITY has asked Florian Matussek, Product Group Director, Video Analytics at Genetec what role they play in video analysis.

GIT SECURITY: Artificial Intelligence, Deep Learning and video analytics are very popular terms when it comes to video surveillance. Can you explain the terms and what they mean regarding security applications?

Florian Matussek: Artificial Intelligence is a field of research, which emerged in the 1950s. It has the broad aim to develop systems, which can understand their surrounding world and learn new skills. We are a long way from true AI today. However, Machine Learning has emerged as one field of techniques, which promises to get us closer. It involves teaching a machine to use inputs and historical information to improve its performance without being explicitly programmed to do so. And one of several types of Machine Learning is Deep Learning, which uses vast amounts of data to train a machine to detect and classify inputs. In security applications license plate recognition is a prominent example, where Deep Learning is used to accurately detect license plates. In summary, Deep Learning brings higher accuracy and a wider range of applications to the security industry.

There are high expectations for these technologies and in the past, it was not unusual to see systems overpromise and underperform. Can you outline where we are in the field of security?

Florian Matussek: Comparing expectations versus reality, 15 years ago the expectation was driving a Lamborghini and

the reality was riding a bicycle. Today, the expectation is still a Lamborghini (or more) and the reality is an Audi. We became way better but we still have a long way to go. While challenges around accuracy are less relevant today, we have growing challenges around scalability and required computing power. Deploying a Proof-of-Concept on one camera is very different than rolling out an enterprise-scale video analytics project.

What do you think, what applications make sense in our industry and where do you think users should be cautious?

Florian Matussek: One advice I give anyone looking at video analytics solutions: Don't buy a solution because it claims using "AI". In fact, if AI is highlighted excessively, it is rather a red flag. In the Business Intelligence space there are several things that work well, such as people counting. Any solutions that make your video better to search through work well too, think forensic search. Technologies that are still less proven in the field are weapon detection and detecting more complex behaviors. In general, be aware that video analytics is not an application by itself. It must fit a use case that provides value to the user. For example, there is no use for people counting data if there is no tool to view it properly.

What level of 'intelligence' would you recommend users when they think about implementing video analytics into their systems?

Florian Matussek: First, start thinking of use cases that are "simple" but benefit a large part of your deployment. Tampering detection is a great example. Detecting if your cameras have been tampered with is a functionality you can leverage on each camera while it is also easy to deploy. Then, think about specific use cases in your facilities where video analytics can help. But start with the problem and then solve it with video analytics, not the other way round. Too often, video analytics are treated as a solution in search of a problem.

Is it better to use analytics at the edge, built into the cameras, or run video analytics within the management system?

Florian Matussek: There is no correct answer to this question, it is a mix. Some features make sense in the camera, but they need to be leverageable inside of the management system, for example less challenging tripwire applications. Running video analytics within the management system is more taxing on hardware resources but brings benefits around ease of deployment and easier management of the data produced. And finally, there is also the option to run analytics in the cloud. But one thing is for sure: The future will be hybrid.

CONTACT

Genetec
Montreal, Canada
+1 514 332 4000
www.genetec.com

WE'RE AN AMERICAN BRAND

For over three decades Altronix has earned its global reputation for the highest quality and reliability, offering exceptional power and data transmission solutions engineered and manufactured exclusively in the USA – all backed by the best customer support and our unique lifetime warranty. And we're stronger than ever. As we continue to grow and the industry evolves, rest assured you can always trust your security to Altronix.



MANUFACTURED IN THE U.S.A. & BACKED BY A LIFETIME WARRANTY

Special
Focus

Perimeter Protection

5x3

1. What technology or combination of technologies do you recommend for an effective perimeter protection?
2. What do you see as the biggest challenge in perimeter protection and how do you approach this challenge?
3. Please describe one highlight of your product offering with the best performance for perimeter protection?



Fabrizio Leonardi

Executive Vice Managing
Director of CIAS

1. There is not a single technology that works perfectly for any type of environment. Today we can deal with external protections with four macro types of products: barriers, electronic fences, underground sensors and video analytics. Whatever solution or technology was chosen for the realization of the security system, it would have advantages and disadvantages, both of a technical and economic nature. Therefore, to answer the question It will be necessary to work on a rather articulated answer. In fact, only after a careful analysis of the site/risks, it will be possible to hypothesize the achievement of the best cost/performance. Surely the integration of more technologies will allow a reliable detection with few unwanted alarms.

2. In recent years, the security market has rapidly changed skin with the entry of large international players who have speeded up the development process of new technologies. CIAS has always focused and continues to do so on innovation and

quality. We have done this since the 90s with the implementation of Fuzzy Logic analysis within our products, or in 2012 with the introduction of MEMS technology for the detection of cutting and climbing fences, we are doing it with Micro-Ray and his linear microwave rays, and we will do it by going deeper into the world of CCTV and video analytics with Synapses.

3. Micro-Ray is a virtual detection barrier with linear microwave rays. The idea was born from the need for an alternative to infrared beams, which are normally used to protect very narrow corridors, but which by their nature have many limits (temperature, glare, solar reflections, fog, high consumption, frequent maintenance). Micro-Ray provides linear rays exactly as infrared does but without the limits of the latter. The flexibility of application for this new technology, thanks to their detection reliability and total immunity to extreme weather conditions, makes this product a unique solution of its kind.

1. There is no miracle solution and no panacea in the field of perimeter protection, as each technology has its advantages and its limits. Choosing the right solution depends on: The threat & security risk, the environment, the value of goods and information to be protected and the site infrastructure. Depending on the above points, our experts work in collaboration with our customers to establish a security concept with a single or multi-layered approach. Our goal is to advise on the best mix of technologies that can be used to protect the different zones of a site i. the perimeter, ii. the inner area, iii. the buildings. Sorhea's shock detection cables can be installed on the perimeter fence in combination with our active infrared barriers and video analytics for the inner layer. Buildings can be secured with our dual-technology motion detectors, or active infrared barriers installed on the façade or roof-top of the building.

2. The biggest challenge in perimeter security is providing an alarm when you need an alarm 24/7 and 365 days a year. When end-users invest in a perimeter security system, they expect to get an alarm when they need an alarm, not when the weather is bad or when small animals pass through the detection zone. We approach this challenge with innovation and technology. Providing reliable solutions is Sorhea's DNA.

3. Sorhea is the only manufacturer of active infrared barriers capable of providing an immaterial wall of detection of up to 18 active infrared cells and 5m in height. Sorhea's multiplexing technology allows you to know exactly which beam(s) is/are cut. Our customers can configure the barriers to trigger an alarm if one, two or three parallel beams are cut, thus filtering unwanted alarms from birds or flying objects. In short, we maximise the power of detection as well as minimising unwanted alarms at the same time.



Heiko Viehweger

Sales Manager DACH
at Sorhea



Bangyan Xu
Product Manager of
Security Radar at Hikvision

1. The perimeter environment is usually complex with changeable weathers, while different types of events could happen from time to time. It is crucial for security systems to be stable and reliable protecting perimeters. However, in most cases, security technology with a single-dimension could not fully detect the anomalies effectively. Hence, we suggest to adopt technology with multi-dimensional perception, and in the case of perimeter protection, it would be the combination of video cameras with radar technology. This integration extends perception capabilities of radar sensor and video cameras and widens their applications by enabling the collection and use of multi-dimensional information. Security radar is reliable in all weathers and lighting conditions, it provides wide detection angle and ultra-accurate intruder detection capabilities. It can further offer visual intruder verification through video linking. This configuration will not only trigger an alarm when an intruder is detected – it will also trigger video recording, to help with visual verification of the intruder. This helps create ultra-accurate intrusion detection in all weathers, increasing operational efficiency and providing maximum security to perimeter environments.

2. The biggest challenge would be the complex environment and harsh weathers, and to gain maximum reliability (of the technology) in such conditions, those include but not limited to complete darkness, dense fog and stormy weathers. Therefore, we need to address it with overall situational awareness of the perimeter, predict and cope with events effectively and efficiently. We suggest security radar and its linked PTZ dome cameras as a solution. The reasons are: Most radar units use microwave frequencies to detect and measure objects, they do not rely on lighting for perception, therefore, they can be hardly impacted by darkness, rain or fog. While this kind of environment is especially true for perimeters, so implementing radar technology can greatly improve the overall system stability.

A security radar allows the measurement of the radial distance and the depth of each object, it accurately maps out the location and distance of an object in the detection field, which can be used to predict potential risks and strengthen the overall situational awareness of the environment. The combination of radar and video cameras can further provide visual images of intrusion events, helping operators to verify alarms, hence greatly boosts overall system's alarm accuracy and strengthens system reliability.

3. Our DS-PRI120 microwave security radar uses cutting-edge Hikvision technology to accurately pinpoint the location and motion trail of up to 64 potential intruders per radar, even in the harshest weather conditions. It can offer accurate detection over a wide angle of 120°, and up to a distance of 120m. It supports multiple scene modes with adjustable sensitivity, making it suitable for a variety of applications. Shrub Mode, for instance, is best suited to areas surrounded by dense forest, as it reduces false alarms such as shaking trees or heavy rain. Open-Area Mode is ideal for large, open, sensitive locations such as ports and parking lots. And the Custom Mode enables users to fine-tune the environmental sensitivity to suit their particular needs. The radar can also link with as many as four Hikvision PTZ dome cameras at once, enabling users to view, accurately track and record multiple images of targets simultaneously.

Reliable and *intelligent*

GRUNDIG Security's solutions, supported by artificial intelligence (AI)

- Face recognition for people identification
- License plate recognition
- Intrusion alarm and perimeter protection systems with object classification

GRUNDIG Security –
for tomorrow's video systems.

GRUNDIG



1. Effective perimeter protection requires a combination of physical and electronic security components working together, from security fences and intrusion detection systems to access control and intelligent video surveillance. We recommend different intrusion detection technologies depending on perimeter types and the level of threat. To detect people trying to climb over, crawl under or cut through a security fence, for example, fibre optic detection systems provide a reliable, long-term solution, with zones determined to match camera views. To provide pre-warning areas when people or vehicles are getting too close to the perimeter line, or to create an additional security layer to walls or fences detecting a person crawling towards it or jumping over it, our LiDAR technology would be the perfect choice. It also performs well in applications where you need to secure access gates.

2. I see two big challenges: first the fact that perimeter protection takes place in an outdoor environment which constantly changes; and second that while the solution

needs to work effectively it also needs to be flexible so as not to impact business operations. The environmental factors should be assessed for each site: weather, for example, changes through the seasons; wildlife and vegetation within the surrounding area also needs to be considered. The right technology and configuration should be chosen accordingly. Understanding the operational requirements is crucial to avoid a security system that becomes detrimental to the business operations.

3. If we are looking at our Redscan LiDAR product, a performance highlight is its precision, and ability to track an intruder using integrated X&Y coordinates from the moment an intrusion is detected. It is also precise in determining the size of the object detected; the object target size can be adapted to different threats: detecting people and ignoring wildlife for instance, or detecting a vehicle but not a person etc. Precision is also assured through its ability to create a number of independent detection zones with different sensitivity and responses.



Rick Wakeham
Technical and Product
Manager for Optex
(EMEA Region)



Sebastiano Vento
Managing Director
Scurit Perimeter
Protection Systems

1. The combination of technologies has always been at the heart of Scurit concept, either in terms of individual product (Scurit has been pioneer in dual technology concept applied to a single product for external applications (Dual Technology barrier Absolute, ed.) but more over in terms of multiple protection layers. The layers can be considered as concentric rings of protective measures surrounding an asset. The idea is that if one protective measure is avoided or defeated, additional measures will still be in effect. This concept is often applied to protect Critical Infrastructures.

2. On the one hand our daily challenge is to keep improving our technologies and their ease of installation, enriching with tools to better support on both management and integration levels. On the other hand it is to keep educating the market about the importance of Perimeter Intrusion Detection Systems (PIDS) specially when it comes to protect Critical Infrastructures being the first line of defense. Last but not least new technologies have „wrongly“ entered PIDS

landscape, while their applications should be more oriented towards movements area monitoring applications, therefore we recommend always to make sure that technologies implemented fully meets European standards for Alarm Systems (EN50131) granting at least Grade 3 (most Scurit PIDS meet Grade 4, ed.)

3. As we mainly address our products for the protection of Critical Infrastructures, since the beginning Scurit has designed its products to meet the highest security standard. Our latest range of IP Native Active barriers, that include Infrared and Dual Technology barriers (Avantgarde and Absolute PRO, ed.) , beside the introductions of our patented bi-directional Infrared Technology that definitely brought our active barriers to a next level, have first introduced unique tools to support, as previously mentioned, both management and integration. These include Predictive Maintenance tools, complete real time diagnostic and applications to connect directly to main VMS and PSIM platforms.



SYSTEM 3060

Digital locking systems with access control

📍 The finest in keyless security

Simons Voss
technologies

// **WIRELESS**

// **EASY INSTALLATION
WITHOUT DRILLING**

// Battery powered,
standby for up to 10 years

// No problems with lost keys,
more control and security



PERIMETER SECURITY

The Invisible Wall

Choosing the Most Appropriate Perimeter Security System

When it comes to protecting the perimeters of highly sensitive sites, not all technologies are the same. How do the people responsible for physical protection of people, property and assets choose the most effective technology given the application? A layered approach is one Sorhea recommends, so all areas of a perimeter are covered. Layering ensures that if one technology misses an intruder, another technology will capture it.


A layered approach ensures all areas of a perimeter are covered, including gaps such as gates and blind spots that may be missed by cameras alone. A combination of perimeter intrusion detection and tracking technologies will best serve security personnel in providing the most robust perimeter protection.

Sorhea offers a full range of perimeter intrusion detection technologies, some of which feature multiple detection technologies in the same product: Pyramid combines passive infrared with microwave and Apiris is a triple technology IR Barrier.

Questions for your best Perimeter Security

In choosing the most appropriate technologies for perimeter protection, security managers and directors should consider the following:

- What is the potential threat faced? e.g. Climber, cutting the fence, fast moving vehicle, etc.
- What level of security does your site require? For example, a military base or government site has a different level of risk compared to a car dealership. The technical



Self-contained infrared barrier columns form an invisible fence to detect unwanted intrusions

solution is based on the level of security required.

- What physical deterrents, if any, exist today? An existing fence line to which a detection system can be attached or no fence at all – perhaps due to the need of maintaining the aesthetic integrity of the surrounding still requires high security. The site's landscape, layout and environmental conditions are also important.
- Existing infrastructure? To keep costs down, choosing technologies that integrate to existing systems is critical. Communications between those accountable for physical security and IT departments will ensure a complete integration among systems.

Deployment and maintenance? There are intrusion detection technologies that are cheaper to purchase, but are more expensive to install and maintain.

Sorhea offers a wireless and solar-powered option (Solaris) with advanced technology, which reduce installation and maintenance time, because no underground cabling is required. Together with the web-based maintenance, it reduces the overall cost and Total Cost of Ownership.

With multiple technologies protecting the perimeter, centralized monitoring is critical. With Sorhea's Maxibus and the recently introduced Connect module, one interface can manage all incoming Sorhea surveillance technologies.

Open protocols are also becoming the norm, so choosing manufacturers whose technology can communicate with the other providers' allows for easy management of surveillance systems, regardless of manufacturer.

Are you using or considering the latest technologies? Physical security and perimeter systems are aging, for the most parts, and not all manufacturers are keeping up with the latest technology.

Traditionally, perimeter security requires an extensive skill set to set up poles for lighting, mounting cameras and communication infrastructure, such as switches and routers. It is very costly in terms of installation time and workload to meet deployment timeframes.

Example Installation

For one of Sorhea's clients, they had to obtain a very strict set of requirements. The level of security was supposed to be very high. They had a large perimeter of

more than 6 kilometres to protect and with that came an experienced risk of sabotage caused by intruders starting a fire. They wanted a minimum of dual beam detection with mono detection of bottom beam and only had a limited budget for civil works.

The Solution

In this context, and in order to limit civil engineering works, Sorhea proposed a solution that did not require any power cables thanks to integrated solar panels.



Communication occurs through a dynamic radio mesh network (through proprietary protocol) to and from all Solaris columns that transmit alarm information reliably and efficiently

The active infrared barrier Solaris was included to form an invisible wall of detection around the site. 22,000 square metres were secured within an industrial site with a total installation of 34 Solaris columns.

The Technology

The Solaris technology can cover miles of perimeter with little to no infrastructure – the value proposition is exceptional and the total cost of ownership has been greatly reduced. Solaris is being deployed around the world in various government installations. Its self-contained infrared barrier columns form an invisible fence to detect unwanted intrusions.

Powered by a solar panel and highly efficient integrated battery, installation requires little to no civil engineering.

Communication occurs through a dynamic radio mesh network (through proprietary protocol) to and from all Solaris columns that transmit alarm information reliably and efficiently. This communication uses the highly secure Advanced Encryption Standards (AES 256). Each Solaris column integrates a powerful radio transmitter/receiver with low power consumption. When the infrared barrier sensor detects an intrusion, alarm information is collected by all nearby infrared columns that retransmit information automatically. The alarm message is relayed to a radio coordinator connected to the Maxibus Universal hub. The alarm center receives an intrusion alert notification. In case one Solaris column is down, an alert is triggered acting like a watchdog for individual column status reporting.

Solar-powered, wireless infrared technology for perimeter protection features include: A patented design with anti-condensation, anti-ice caps which prevent the formation of ice on the IR cover for exceptional performance in all weather conditions; easy Installation: Independent barrier, no civil engineering or cabling required, columns are bolted to concrete block – operational in minutes; reliability: Communication through secure radio protocol with a high probability of detection; innovation: one of the first autonomous, long-range 300 feet (100m) infrared barrier in the industry.

Solaris is an ideal solution for sites that require high-security perimeter surveillance with minimal infrastructure. It is ideal for utilities, sub-stations, control centers, nuclear plants, correctional facilities as a secondary layer of perimeter protection, logistics sites like storage and warehousing, car dealerships, industrial complexes, etc.

The goal of outdoor perimeter security is to provide advance warning, enhance overall situational awareness and improve response times of security staff. Effectively deployed, perimeter security systems extend the physical perimeters of sites so breaches are identified in advance of a damaging event.

Pictures © Sorhea

CONTACT

Sorhea
Frankfurt am Main, Germany
Tel.: +49 171 2614827
www.sorhea.com

PERIMETER PROTECTION

Seen, Unseen

Perimeter Protection Can Use Radar to Anticipate Intrusions

Perimeter protection plays a major role in the security sector. Protecting the premises of a building or an outdoor area is very important for a very broad array of industries. For instance, solutions are needed to secure property perimeters, refineries, high-security warehouses, company premises, storage spaces, and airports.

The measures and products used in perimeter monitoring are as wide-ranging as the use cases. In addition to mechanical devices, more and more equipment and electronics are being deployed to provide additional support. A traditional protective measure is to block off the premises with fences and barriers that are usually equipped with additional detection measures to recognize potential threats from a distance. Sensors detect, for example, vibrations on the fence caused by intruders attempting to climb over the obstacle. The problem is that the barrier can often be passed over quickly or might sustain damage, since there is little time for security personnel to arrive and further actions to be taken. This means the threat is detected too late, resulting in considerable risk of burglary.

Using a radar barrier in addition provides greater protection, as a sensor detects any persons who cross it. It is created through the continuous transmission of an electromagnetic signal that is not perceptible by humans. This method is like pulling tight an invisible rope close to the fence. If an intruder passes through the radar barrier, the sensor records that the signal has been interrupted, thus detecting whether a person is approaching the fence. Radar offers a decisive advantage over light barriers in perimeter protection, and since the technology works independently of light or weather conditions, it is ideal for outdoor use. Even in the dark, extreme temperatures, or bad weather, the sensor detects people and

objects without failure. The radar barrier ensures reliable monitoring of the fence, thus securing the inner premises.

More Than Detection

When combined with acoustic warning signals or floodlights, the system can successfully deter many criminals. If the information is transmitted to the main office, security staff can then take appropriate measures, potentially preventing damage to mechanical equipment through rapid intervention. The sensor barrier's simple operating principle has helped it become established as an early warning system in nearly every security concept. But with continuing advances in technological development, far more than just radar barriers are used nowadays in perimeter protection, with the next generation of radar sensors yielding more comprehensive and precise information. They monitor more than just a narrow strip along the fence – covering large pieces of land.

These larger detection ranges provide greater flexibility in the surveillance of property edge fencing. Even at a long distance, the detectors recognize the movements or presence of people and objects early on. This enables security personnel to react to the potential threat proactively and in good time. The more advanced sensors and systems not only detect the temporary presence of a person or object when passing through a barrier; they determine the direction of movement, speed, angle information, and distance.

Route Tracking

This data can then even be used to track an intruder's position. In addition, modern radar devices offer another useful innovation for perimeter protection, namely radar tracking. Using this technology, a target's movement history can be mapped in real time. The security personnel can see exactly when a figure has reached the fence or if they turn away again. In the signal analysis, advanced algorithms are utilized to differentiate between people, animals, and vehicles when detecting targets. The additional information about events within the coverage area provides a better basis for assessing the threat risk. Combined with the new features, early detection helps to reduce false alarms and increase the efficiency of perimeter protection.

Innosent has been committed to developing innovative radar solutions that contribute to optimizing and advancing security technology for years. The company's portfolio includes a wide range of radar products that are ideally suited to the requirements of the various use cases in the security sector. From motion detectors to radar barriers to complex tracking systems, the Innosent portfolio includes many radar components for security systems.

CONTACT

Innosent GmbH

Donnersdorf, Germany
Tel.: +49 9528 9518 0
info@innosent.de
www.innosent.de/en

Unidirectional Media Converter

The unusually-named CNGEMUMC4+2 (TX, RX)/M from Comnet prevents cybersecurity attacks from an unsecured entry point on the network reaching a secured part of the network by creating a hardware-based physical layer of protection. This intelligent media converter with Link Guardian creates a physical layer of protection that limits network traffic to one-way communication between the source and destination networks. Called a 'Unidirectional Media Converter', this physical security is more effective than software-enabled network firewalls, is un-hackable and invulnerable to malware. It is a hardened, four-port, all-gigabit intelligent media converter, designed to protect networks, devices, and other digital assets (databases, historians, SCADA, PLCs, DCS, etc.) from external cyber threats. It has four 10/100/1000Base-T(X) copper ports and two 1000Base-FX SFP ports.



www.comnet.net

ANPR Reader for Secure Vehicle Access

Nedap has upgraded its ANPR Lumo license plate reader for vehicle access control with Open Supervised Device Protocol (OSDP), ensuring a greater site security. The camera is compatible with the OSDP protocol V.2.1.7. The upgrade improves vehicle gate access in a trusted and secure manner and provides enhanced security to gate access control solutions in high-security applications. OSDP enables advanced and secure communication between the reader and access control panel that supports this protocol as well. The all-in-one license plate camera has powerful OCR (optical character recognition) and advanced software intelligence built-in. It features fast and accurate recognition of vehicle license plates at a range of 2 to 10 meters, even in high speed traffic flows. Both IR-reflective and non-reflective plates as well as standard and custom license plate formats can be read reliably due to the camera's smart learning algorithms.

www.nedapidentification.com

Locking Solution for Rental Housing Portfolio

Nokian Vuokrakodit is a non-profit rental housing company owned by the City of Nokia in Finland, managing and renting out affordable, high-quality homes for existing residents and those moving to the city. The property portfolio consists of about one thousand apartments and terraced houses with space ranging from studio flats to four-room family homes. iLOQ's digital locking solution has already been installed in many of Nokian Vuokrakodit's existing properties. If a resident loses their key, its access rights are quickly deactivated to reduce the risk of misuse, and they receive a new key immediately. Previously, they needed separate keys for the laundry room, storage area, sauna and bicycle warehouse. Now, all access rights can be assigned to just one key. In the summer of 2020, iLOQ was invited to submit a tender, in accordance with an EU procurement notice, to provide a locking system for the company's new properties, which it won.



www.ilq.com

www.GIT-SECURITY.com

Public View Monitors with Built-In Camera

A new range of Wisenet Public View Monitors (PVMs) equipped with a built-in SSL connected 2-megapixel camera has been introduced to help retailers deter fraudsters and shoplifters. With a choice of 10", 27" and 32" monitors, they are designed to be located at store entrances, shopping aisles, till points or self-checkout pay points. With an SD/SDHC/SDXC slot for up to 512GB of data storage, they can display a slide show of supplier adverts, own-brand product promotions or special offers, for example. A default blinking 'Recording in progress' message is superimposed to let would be thieves know they are on camera. Supported by the company's WAVE and SSM video management platforms and NVRs, the ONVIF-conformant PVMs can continuously record or just when prompted by built-in face or motion detection video analytics. The PVMs, which can be integrated with tagging (EAS) systems to record images of people who might be leaving the store with stolen items, also support the AI-Masking, AI-Bio, AI-Face-Detect and AI-Occupancy video analytics applications developed by technology partner A.I. Tech.



www.hanwha-security.eu



The perfect solution for automatic tracking

The IPS VideoManager 3D VMS supports your security staff in handling serious incidents.

The system automatically tracks the detected object and hands it over from camera to camera.

No need to manually control PTZ cameras which ensures that system operators can work more efficiently.





INTRUSION DETECTION

A Picture for the Intruder

Photo Alarm Verification: Reducing False Alarm Probability

Each time home security system is triggered, there is a large chance for it to be just a false alarm, and if such alarm is not verified as false in short time, there is a high probability the emergency responders get to the place to see nothing happened. Not only such situations are embarrassing for everyone involved, they are also costly and overall troublesome.

According to the research conducted by the U.S. Community Oriented Policing Services, approximately 94-98 percent of all alarms are false. For instance, false alarms in the UK cost around £1 billion annually, according to the reports by the Fire Industry Association. Moreover, given that 80 percent of false alarms are triggered by 20 percent of alarm systems, the police and emergency responders spend much of their time away from the actual crime locations (Fennelly, 2016). At the same time, it is not only the communities or security companies that bear costs and suffer penalties, but the home owners are generally also fined for the police discharge due to a false alarm. The fine fee increases with each false alarm discharge to reach as high as £180-450 per alarm in some countries. Besides, in the UK, there are two levels of police response to security alarms, which are Level 1 – immediate response, and Level 3 – no police response. In case of three false calls, the Level 1 security system might be downgraded to Level 3 for a 12-month period.

The problem of false alarms is nothing new in the security systems market having gained the attention of security

systems engineers and professionals as long as even fifteen years ago. Wells (2005) in his guide to digital home technology integration reasonably concludes that there is no universal way to entirely prevent false alarms, especially when they are triggered by the innocent sources like pets, children, and alike. Still, according to the statistics provided by the False Alarm Reduction Association (FARA), more than 80% of all false security alarms are due to user error, which might be prevented. Hence, apart from using the most reliable security equipment and its correct installation, several additional solutions to how reduce false alarms in general and the cases of response to such alarms in particular might be outlined:

- Alarm verification by two or more detector triggerings within a short timeframe: though such alarm verification removes the false triggering of one detector it still does not protect against the users' errors. In certain cases, verification might take some time and this is another serious implication of such approach. According to FBI, the typical timeframe of burglary is between 90 seconds and 12 minutes what

means that every minute for response counts. In the UK this issue becomes particularly pending, as Mueller (2019) explains in his article for the New York Times that due to the budget cuts the police forces are shrinking having less officers to respond to alarms what extends the response time even without double or triple trigger verification. Given that one burglary is committed every 1.5 minutes in the EU with the number going up to 1000 burglaries per day in some Member States, according to the Europol data, such multiple alarm verification is not the optimal option for home security systems.

- Alarm video verification: such type of verification is another attempt of the monitoring and security systems companies to reduce the probability of false alarms. The motion detectors installed with security systems are used together with cameras that allow checking what has triggered the alarm, yet such solution comes with significant compromises. First of all, such surveillance system is costly to install and maintain due to the low battery life, complicated configuration of the DVR cameras systems,

cloud data recording, and the general facility infrastructure. Even though such challenges might be reasonable for the clients seeking higher control over their security systems and property and for commercial properties, video verification may still raise privacy concerns of neighbours who will not be happy with the idea to live under the constant video surveillance.

- **Alarm photo verification:** this solution is to a certain extent similar to video verification, yet alarm verification is made by checking the photos from the motion detectors' cameras. Such verification is enabled by the special security equipment with the option of visual verification, which is the next generation of motion sensor equipment. Such security system equipment grants a dramatic improvement to the conventional security systems though without a dramatic raise of installation and maintenance costs. Though in some systems it is possible to take a photo by request, the majority of detectors only take photos when triggered by a motion to raise alarm. This significantly reduces privacy concerns and makes such solution one of the most relevant and optimal to address the false alarms verification issue. Apart from these evident benefits, photo verification equipment generally does not require security system reconfiguration what reduces the cost, the time, and the effort of installation and maintenance.

Alarm photo verification is not a new story as it roots back to the post World War II period when the issue of home security became particularly pending. The video surveillance technology was invented in 1940s yet it was not until the 1970s that it was adopted for the home security purposes. In fact, while being called "video surveillance" the early model of such technology used a video camera that was taking low-quality grainy images and transmitting them to the stationary television monitor installed in a separate room. It was equipped with control panel that allowed activating an alarm and sending it to the central station with guards to come to the residence in case of need.

Naturally, the new generations of photo verification systems are more exquisite, efficient, and productive. The latest solutions available today are the best choice to enhance your property protection due to the range of high-value features making them faster and more reliable in raising and identifying a true alarm:



MotionCam: wireless motion detector with a photo camera to verify alarms

- **Speed:** Photo detectors raise alarm in a split second after a motion detected and less than 10 seconds are needed to verify the alarm to see if it is true or false. This is significantly faster when compared to video surveillance alarm verification through several triggerings.
- **Quality of photos:** The modern photo verification systems generate high-quality images that not only allow detecting a person in security area but also make it possible to identify such person. Besides, by sending a series of photos to the monitoring company, such equipment allows tracing the events after the alarm triggering.
- **Reliability:** the new systems are based on radio protocols and use radio channels to transmit signals and photos instead of exiting Wi-Fi network at the facility. This ensures both the rapid photo delivery and the lower probability of loss of connection.
- **Large distance of wireless connection:** while the older photo verification alarm systems used wired connection and hence were based on equipment with receiver range up to several hundred meters, the new wireless motion detectors might be set up at a distance of more than 1500 meters away from the central panel. This permits using one system to monitor a multi-storey building or several facilities simultaneously.
- **Autonomy and long service life:** due to the innovative detector battery improvements, the new photo alarm verification systems are autonomous and operate up to 4 years on the pre-installed battery. This reduces the time and cost of service maintenance for both the company and the client.
- **Easy system upgrade:** some of the new photo verification solutions do not require a complete re-installation of security system with only a motion detector and a central panel replacement needed to upgrade. Again, a great deal to save time and costs while enhancing your home monitoring and security.

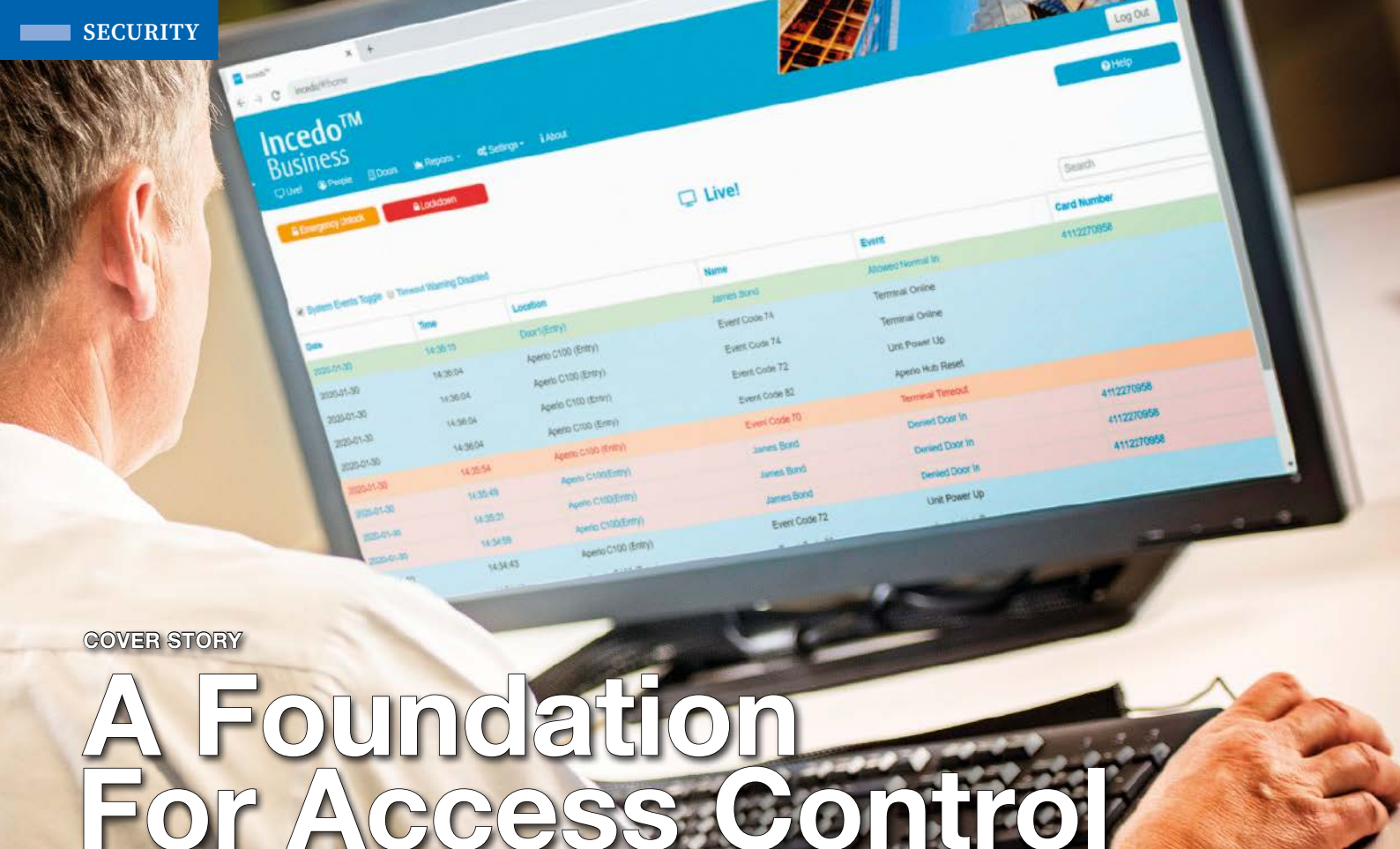
As it follows from the detailed review of the existing options to minimise the probability of false alarms, neither of them provides the 100% guarantee. However, the systems with photo verification still might be considered the optimal choice in terms of their cost and value. Easy to install and not expensive to maintain, the new photo verification equipment allows taking high resolution photos after the alarm triggering, sending them in a matter of several seconds, what ensures a rapid and effective response in the case of a real burglary. At the same time, such systems do not entail any privacy concerns for the neighbours and have longer battery life when compared to the more complex video alarm verification.

The Author

Aleksandr Konotopskyi,
CEO of Ajax Systems

CONTACT

Ajax Systems
Kyiv, Ukraine
www.ajax.systems



COVER STORY

A Foundation For Access Control

Platform-Based Access Management can Meet the Security Challenges of the Next Decade

As the way we live and work continues to change, people, data and goods move more fluidly than ever. It already seems less useful to think about building management functions in isolation. Rapid urbanization, technological change and shifting patterns in global working put these systems to use simultaneously, every day. How can a new generation of security technology address this?

In one recent survey of access control professionals, 95% of respondents judged „system integration with other building/security management functions to be ‘somewhat’ or ‘very’ important“ (1). Technology and system silos will become a thing of the past. But this idea of ‚integration‘ extends further: it impacts everything we expect from the next five years and beyond in access control. One prominent example is sustainability. The European Council for an Energy Efficient Economy estimates that smart building technology will reduce energy use by at least 15% (2). Automated, integrated controls are a key ingredient.

„We are on the brink of significant change in access control. In fact, change beyond access control,“ says Stephanie Ordan, VP digital and access solutions at Assa Abloy Opening Solutions EMEA. „As a manufacturer, our challenge is to develop solutions that create a seamless

experience for security managers and building users; genuinely joined-up, intelligent solutions that are designed to meet the changing needs of our customers.“

An Ecosystem Approach to Access and Security Management

A single, all-encompassing security platform can deliver this connectivity and convenience. It can keep premises secure and filter access to manage the ever-changing movement of people, while protecting investment by creating a dynamic base on which future security products and technologies can interoperate.

„This is the approach we adopted for the new Incedo platform from Assa Abloy Opening Solutions,“ adds Stephanie Ordan. „With its modular ecosystem approach, customers simply choose the security hardware and credentials they need and the appropriate management system option.“

Users can choose from a growing range of Incedo-enabled security and access control hardware. Road-tested, award-winning, wireless digital locks and wired wall readers secure interior and exterior doors. A wide choice of card and token credentials helps users enjoy convenient access to, and movement around premises. The system’s mobile keys add the flexibility to open doors with a smartphone. Everything works seamlessly, as new Incedo-enabled hardware from Assa Abloy and third-party providers continues to be connected to the evolving ecosystem.

A customer’s chosen hardware and software configuration is not set in stone; they can change their mind as often as they like. Incedo ensures flexibility and scalability in every direction, to meet the security needs of today and in the future. „This transforms the experience of using and managing a building,“ says



The all-encompassing Incedo security platform delivers connectivity and convenience

Stephanie Ordan. „A future where doors are smarter, connectivity and movement are seamless, and access management is genuinely intelligent. This is our vision for this new system, and for those who will use it.“

Tailor-Made Solutions for Different Businesses and Segments

The ecosystem approach brings adaptability because the security and operational challenges at, for example, a university, small hotel or hospital are not the same as those faced by a public building or corporate HQ. The first Incedo platform-based system – with the Business commercial interface – launched in the UK, Benelux, Eastern Europe and the Middle East in 2020. Availability will expand across EMEA during 2021.

The system’s flexibility allows solutions to be tailored to regions, too. Incedo Open, which incorporates cloud-based management, launched in 2020 in Scandinavia so that facility managers there can access and amend security data whenever they need. „Small and medium-sized businesses, or those serving the multi-residential housing block sector across Scandinavia, will find access control and security management much easier with this solution,“ says Emma

Petersson, head of business management at Assa Abloy Opening Solutions Sweden. „Intelligent access control must adapt as your needs change or your business grows – and this is precisely what Incedo was built to do.“

Anytime, Anyplace Access Management

In security and beyond, cloud services are booming. In a recent report, Forrester forecasts 35% growth in the global market for public cloud infrastructure in 2021 alone (3). Over a third of end-users surveyed for the Wireless Access Control Report 2021 now use cloud management for access control (1). Analyst firm Research & Markets forecast the demand for Access Control as a Service (ACaaS) will grow at 19.8% annually through 2027 (4). Within that, the hosted service sector is expected to enjoy even faster growth: over 24% annually.

Yet cloud management can mean different things to different customers. „Survey data shows the way companies manage access control will continue to be a mixed picture, with both locally hosted and off-site cloud solutions or Access Control as a Service,“ says Russell Wagstaff, platform director, digital and access solutions at Assa Abloy Opening

Solutions EMEA. „This is why, when launching our Incedo ecosystem, we give users the choice.“ The recent launch of the Business Cloud option solves a pressing problem for time-poor security managers: they no longer need to be on-site to handle day-to-day security. The software operates securely 24/7 from any device with an internet connection.

For customers, installing Incedo Business Cloud is easy, with no complex integrations. Software updates are regular and automatic; real-time reports and analytics are available with a few clicks. For any size of organization, switching to Business Cloud implements powerful access control with low initial expenditure, ongoing cost efficiency and no hidden costs. „A cloud software solution makes budgeting more predictable,“ says Kevin Hoare, Incedo product unit director at Assa Abloy Opening Solutions EMEA. „It removes the need to hire additional in-house IT support and maintenance teams: you know ahead of time how much resource to allocate and can scale infrastructure up or down quickly.“

The Platform Approach at Plexus

When Plexus (5) – a UK fire and security specialist – sought an upgrade for their own headquarters’ security, they drew up



The ecosystem approach brings adaptability to address various different security and operational challenges

a list of criteria. A broad choice of wireless and wired door devices and readers was essential, as was a straightforward upgrade path for hardware and software. In addition, a new installation should offer the option to further scale in any direction in the future.

Their new Incedo Business system is now up and running. Installing wireless locks, readers and controllers from the Assa Abloy range was fast and simple, streamlining their upgrade. „Hardware architecture is well manufactured, and this goes hand-in-hand with software that has fantastic ease of use,“ says Marcus Elphick, Plexus’ operations director.

With keyless locking and Incedo Business management software, Plexus managers control exactly who goes where around their offices. They can set times when defined user groups may open specific doors. It keeps staff moving and safe without the hassle of physical keys.

The „new software has been seamless, much simpler and with a common sense approach to structure,“ says Marcus Elphick. The software is intuitive to operate from any PC. The platform’s flexibility allows the company to add more locks or change management software options whenever they need. They are already planning to extend control: remote sites, entrance gates and warehouse access control will be covered, too. „We have been so pleased with the system and its capabilities,“ he adds. Plexus aim to quickly adopt new Incedo Business Cloud, as they look to expand security coverage to more sites.

„Incedo’s system management options scale from entry level up to cloud-based administration,“ adds Kevin Hoare. „You can manage multiple sites and third-party integrations, including security solutions such as CCTV. Scale up and down, add or remove hardware and credentials on demand, or switch system management options, all within your single environment. Migration between local and cloud management is always seamless in any direction, ensuring total flexibility for your business.“ Whatever the 2020s bring next, Incedo gives security the flexibility to adapt.



UK fire and security specialist Plexus: The Incedo Business access security solution can be scaled in any direction in the future

- (1) www.ifsecglobal.com/resources/wireless-access-control-report-2021/
- (2) www.eceee.org/all-news/press/press-2019/12-strategies-to-step-up-global-energy-efficiency/
- (3) <https://go.forrester.com/blogs/predictions-2021-cloud-computing-powers-pandemic-recovery/>
- (4) www.researchandmarkets.com/reports/3633910/access-control-as-a-service-acaas-global
- (5) www.plexusfs.co.uk

CONTACT

Assa Abloy Opening Solutions EMEA

Digital and Access Solutions

+49 30 8106 2970

www.assaabloyopeningsolutions.eu

<https://campaigns.assaabloyopeningsolutions.eu/incedo-business>

Qognify launches the Control Room Update (R16) of its Cayuga VMS

Qognify has launched its Cayuga R16 video management system (VMS). The latest update focuses on the control room. The release makes it easier for security staff to react,



with new features and functionality including advanced maps, patrol in tiles and dynamic camera layouts delivering a more comprehensive overview in real-time. The mapping functionality has been enhanced and now allows for the automatic positioning of sensors in maps using geo-coordinates. Cameras, alarms and buttons, as well as event items can now be displayed on the ArcGIS maps provided by ESRI within Cayuga. When using the Qognify Mobile Client, cameras can be located on a smart device via Google Maps. Cayuga R16 is now compliant with ONVIF Profile S and G and supports extended functionalities of Dahua Thermal Cameras for body temperature scanning. There has also been a further hardening against cyber-attacks with important common vulnerabilities and exposures (CVE) updates.

www.qognify.com

Containerised Self-cleaning High Security Unit for Hygienic Laboratory Environments

A group of specialist companies have combined their expertise in security, container fit out and hygiene to create a new, rapidly deployable laboratory and test facility solution for the healthcare sector. Newcastle upon



Tyne-based Modular Security Solutions has launched Steri-Pod, a containerised, self-cleaning high security unit which offers a hygienic laboratory environment for applications such as Covid-19 testing and vaccinations. Steri-Pod features UVC (Ultraviolet C) germicidal irradiation technology from Oldham-based infection control specialist Plasma Clean. This provides 24-hour protection – at a rate of 99.99% – against Covid viruses, bacteria, spores and fungi. These units can be mounted on walls and ceilings and use UVC germicidal lamps which emit light at a wavelength of 254nm and are designed to eliminate airborne microbes.

www.modularsecurity.co.uk

Single Loop Fire Control Panel with Advanced Connectivity

Innovative manufacturer of fire detection equipment, Global Fire Equipment (GFE), has added to its product portfolio with the launch of G-One, a versatile addressable single loop fire control panel with advanced connectivity. The G-One has been designed with affordability and flexibility in mind. Thanks to its sophisticated design, easy installation and intuitive commissioning, it is an ideal solution for a wide range of single loop applications, from offices and restaurants, to shops, schools and more. The control panel can be either surface or recessed mounted. CPR Certified to EN54-2 and EN54-4, the G-One offers advanced Chameleon peer-to-peer multi-master network communications and is capable of being networked with up to 32 fire control panels from the GFE range. The control panel has a high-integrity digital protocol for resilient high-speed monitoring and data communication with up to 250 devices on a single loop. Powerful cause and effect programming capabilities, along with enhanced system diagnostics performance, are also offered by the panel.



<http://globalfire.pt/>

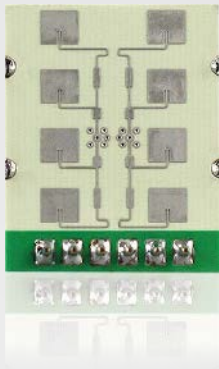
Flexible and Effective Solutions for the Pandemic and Beyond

The new M73 and S74 camera systems from Mobotix have three and four sensor modules per camera. During the current Corona pandemic, the company's video systems are providing effective hardware and software applications with 'back-on-track solutions' to keep life as normal as possible. For example, anomalies in body temperature can be detected so that the persons concerned can undergo medical examinations. Thermal solutions are already being used, for example, by hospital visitors or hotel guests. The intelligent systems can also detect the wearing of mouth and nose protection. In retail stores or ski resorts, automatic announcements can be triggered if the camera detects people without masks. Overcrowding situations can also be detected, and social distancing can be supported. Beyond the pandemic, through simple conversions, the same cameras can then provide reliable, object-based recording of customer flows and the most frequented areas on the sales floor, which provides retailers with important information on customer behavior or product placement (detection of hotspots).



www.mobotix.com

Innosent's Motion Detector Boasts Greater Functionality



Innosent's newly developed sensor solution not only takes on the task of conventional motion detectors but also provides useful distance information. Innosent is adding a new motion detector to its portfolio. The IMD-2000 is ideally suited for simple contactless control applications in the areas of building technology, automation, and safety equipment. The sensor's technical characteristics and design optimize the functionality of conventional motion detectors and facilitate their use. In contrast to Innosent's previous solutions for motion detection, the product is the first to provide distance information. Through the indication of distances, it is possible to limit the area in which a reaction will be triggered. The IMD-2000 also impresses with its design – its small dimensions enable

the sensor to be installed in flat or narrow casings. The built-in signal-processing unit also saves customers additional development work in order to integrate the radar. Due to the further development of radar technology in recent years, the company has managed to provide the sensor technology at a lower and lower price despite further technical enhancements.

www.innosent.de



ASSA ABLOY Opening Solutions

Aperio® Wireless Locking
Technology:

UPGRADE ANY STEM



Free download
Check your
access system's
compatibility in
60 seconds



Experience a safer
and more open world

ACCESS CONTROL

Smart Phone Access

Gallagher Installs Bank Access Control Using Smartphones



▲ Mobile Connect uses Bluetooth wireless technology to verify users using a smartphone, sometimes also with secondary authorization

◀ Business and security systems underwent a complete upgrade at Ahli United Bank

As part of upgrading the full product suite at its Bahrain Headquarters, which included all controlled doors and software, Ahli United Bank (AUB) also took the opportunity for a complete re-design of the set-up and locations of its security system. The bank was committed to finding a product that was cost effective and had a long life expectancy. While researching their options, AUB management saw a demonstration of Gallagher's Mobile Connect technology and were immediately convinced that this was the ideal product for the bank's upgrade.

Doubly Secure

In late 2018, AUB began testing the new mobile solution on site, then to be rolled out to most of its staff at headquarters. Gallagher Mobile Connect uses Bluetooth wireless technology to enable users to verify at a reader using a smartphone

instead of an access card. A huge benefit for AUB is the solution's capability to add additional layers of security where needed. Gallagher's Mobile Connect solution provides the option to apply two-factor authentication via the smartphone – either fingerprint, PIN, or facial recognition – delivering heightened security for access to restricted areas. According to AUB's management, the two-factor capability was very appealing to them. "Using a mobile with facial recognition is far more secure than just a card and a PIN, and it's immensely more cost-effective than buying biometric readers," they said.

Flexible Access Scheduling

From an administrative and site management perspective, Gallagher Mobile Connect provides AUB with significant flexibility. Easy provisioning means that authorized staff can remotely allocate

temporary access in advance and can also schedule when a user's access can begin and end – ideal for visitors and contractors who come to the bank's headquarters.

Beyond Mobile Connect, readers and controllers, AUB uses Gallagher's security software platform, called Command Center, to manage alarms and access for its headquarters and all branches, and all from a centralized location. "The power of Command Center is enormous," said AUB's management. "It integrates with our CCTV equipment and gives an excellent overview of our operations."

CONTACT

Gallagher Security
Nuneaton, UK
Tel.: +44 2476 64 1234
www.gallagher.com

ENHANCED DRIVER EXPERIENCE

SPECTRE

Stress-free access to your Car Park Barriers

No more traffic queues or bottlenecks at peak times (...), the new SPECTRE's UHF delivers both speed and security at your Car Park Barriers and enhances your daily experience.

Connect up to four antennas to just one Spectre Reader to tackle your toughest security challenges and your diverse fleet of vehicles. Simply and easily control access for four separate vehicle lanes...

SPECTRE is the markets most robust reader and intuitively easy to use. It's discreet by design, flexible in its configuration, secure and encrypted in its communication.

Welcome to enhanced speed and security - in one single solution.



WE'VE GOT YOUR BACK



Salto Systems has gained the coveted BSI Enhanced Level IoT Kitemark certification for access control systems for their latest product, the Salto Neo electronic cylinder.



ACCESS CONTROL

IoT Ready

Salto Neo Electronic Cylinder Gains BSI Enhanced Level IoT Kitemark

Designed for doors where fitting an electronic escutcheon is not possible or required, the compact Salto Neo Cylinder can be installed on standard doors, server racks, gates, cabinets, electric switches, sliding doors, and more. It is also available in an extensive range of models suitable for use on almost any kind of door – from Europe to Asia to the Americas.

British Standards Institution (BSI) has been part of the collaborative work to give clarity on best practices for IoT security, subsequently developing a scheme to assess connected/IoT devices. The scheme determines whether a product has the appropriate security controls for its intended use and is suitably supported throughout its intended life. This cyber/physical security scheme forms the security element of the BSI Kitemark for IoT/Connected products.

The IoT is typically a network of smart devices and systems that can be connected, enabling data to be exchanged to provide services, efficiency, and innovation. Its technology can positively enhance lives and businesses, but the complexity of IoT also means that those with criminal intent may attempt to access it

to steal data, hack cameras, enter buildings, or otherwise breach security.

Wide Range of Approved Products

Like the already BSI certified Salto XS4 One electronic lock product family, BLUEnet wireless peripherals, and Salto controllers and readers, the Salto Neo family of electronic cylinders had to undergo advanced security testing for vulnerabilities and security flaws in BSI's state-of-the-art IoT laboratory enduring BSI's most in-depth and exacting testing and analysis.

The Salto Neo Cylinder provides an effective and convenient way of securing a building or assets. The clutch system is energy efficient, dropping power consumption to impressively low levels resulting in 100,000 / 130,000 operations from just one set of batteries. Standby power consumption is also reduced, further extending battery life.

Now IP66-rated, the Salto Neo Cylinder is weather-resistant, making it especially suitable for outdoor use, even in the harshest of environments. Inside the tough Salto Neo Cylinder exterior is the latest in electronic lock technology. Certified to the highest security standards,

and incorporating ever-higher quality and reliability, the Salto Neo Cylinder offers value far beyond security, however. It also provides greater control over the door by offering users access to audit trails, reports, alerts, and much more.

"We're proud that our Salto Neo cylinder family now holds both 'Secured by Design' accreditation and IoT Kitemark status as both are increasingly important in the specification of access control systems. The award means we now exceed the market standard for a number of security products across our access range which provides Salto customers with confidence that they are buying one of the most secure access control solutions available on the market today," said Ramesh Gurdev, Salto Systems Ltd MD in the UK.

CONTACT

Salto Systems

Oiartzun, Spain

Tel.: +34 943 344 550

info@saltosystems.com

www.saltosystems.com

Core Product Launch

Dahua Technology recently held its core product launch at the 2021 Kick-Off Meeting. The Wiz Sense/Wiz Mind series focuses on AI value transmission. The Wiz Sense series with Smart Motion Detection technology (SMD 3.0) is an ideal choice for small and medium-sized application scenarios such as villas, shops, warehouses, exclusion areas, and personal outdoor properties like fish ponds and orchards. Powered by AI chipsets and deep learning algorithms, Wiz Mind features video metadata, face recognition, privacy protection, wide area security, illegal parking, ANPR, thermal imaging and object monitoring. It also features a more precise and effective AI search function to locate targets. The product combines deep learning algorithms with thermal imaging technology to help users achieve ultra-long distance monitoring in harsh environments, non-contact temperature monitoring and early fire prevention.



www.dahuasecurity.com

Altronix NetWay now Delivers More Power



Altronix announces the release of new environmentally hardened PoE Switches and powered media converters supporting the latest 802.3bt PoE devices. These end-to-end PoE and fiber long-distance solutions allow multiple high-powered IP devices such as multi-sensor cameras, IR or White Light illuminators and wireless access points to be deployed in remote locations with or without local power. "Altronix continues to expand our portfolio of NetWay Spectrum power and transmission solutions to accommodate the latest high-powered IP devices over longer distances – utilizing fiber, copper or hybrid cabling infrastructure with or without local power," said Ronnie Pennington, Director of Sales for the Americas at Altronix.

www.altronix.com

Outdoor Remote Signal Analyzer

Narda Safety Test Solutions has added the Real Time Outdoor Remote Analyzer to its Signal Shark analyzer family. This is an extremely tough, remote-controlled signal analyzer for 24/7 operation outdoors, in the open air, mounted at height on an antenna tower, in the freezing cold or scorching heat, open to all weathers and completely on its own. Under inhospitable conditions, it detects and analyzes, classifies, and localizes RF signals between 8 kHz and 8 GHz, with a real time bandwidth of 40 MHz. The instrument is hermetically sealed to IP65, but allows the heat produced to be dissipated effectively. The unit is extremely resilient to large signals, not easily over-modulated, and can handle very high field strengths, even partially within the lobe of a transmitting antenna, and still cleanly capture even weak interference signals, also in conjunction with the Narda automatic direction-finding antenna.



www.narda-sts.com

Multi-Directional Cameras



Two new Wisenet cameras from Hanwha Techwin equipped with the Wisenet7 chipset have expanded the company's range of multi-directional cameras. The 4-channel PNM-9022V utilizes alpha blending technology to stitch the overlapping images captured by its four Full HD sensors into a seamless 8.3-megapixel 209° image, thus ensuring an operator never loses sight of a person or vehicle moving across a wide area. It can also capture 180° images, using digital PTZ functionality across two of the camera's channels. The PNM-9022V's 4 sensors, which come with 2.8mm fixed focal lenses, are able to capture high definition color images when the lighting level is as low as 0.03 Lux. Incorporating the UL CAP certified Wisenet7 chipset, the National Defense Authorization Act (NDAA) compliant PNM-9022V has technologies to protect it from cyber-attacks.

www.hanwha-security.eu

UZ



INNOVATIVE LOCKING SYSTEMS

- Electronic locking units such as door handles, locking cylinders and furniture locks
- Infrastructure such as radio modules and wall mounted readers
- Management with software or app
- Open and integrable system solutions
- Fast installation and easy operation
- Development and production in Germany
- Modular structure of the electronic knob cylinder

ACCESS CONTROL

Residential Cloud

Cloud Based Access Control Technology Takes up Residence At Ealing Council

Located in the heart of west London, Ealing Council serves the residents and businesses of the capital's fourth largest borough. With a vast housing portfolio and a commitment to keeping residents as safe and secure as possible, Ealing Council benefits from the use of PAC's innovative cloud based access control solution.

The London Borough of Ealing comprises seven major towns – Ealing, Acton, Greenford, Hanwell, Northolt, Perivale and Southall – and Ealing Council's task is to provide a diverse range of services to 350,000 residents across the area. It is committed to improving its performance, while ensuring value for money, and a key part of this is the provision of good quality housing that meets the highest possible standards.

Home Help

In addition to carrying out property allocation, repairs, rent collection, homelessness services and estate management, Ealing Council is responsible for ensuring the security and safety of the tenants living in its 300+ housing blocks.

Daljit Gill is electrical services manager at Ealing Council and comments, 'When it comes to administering our multi-site housing portfolio, Ealing Council recognises the advantages that access control technology brings in terms of our ability to effectively access information, issue and configure key fobs and check occupancy status. As a longstanding PAC customer, we chose the PAC Residential Cloud as the central hub of our access control system, which currently comprises around 1,100 doors and 500 controllers.'

Sky-high Thinking

Over the last few years the cloud has proven to be a game changer in the way access control technology is designed, configured and used. The PAC Residential Cloud leads the way in allowing organisations to remotely manage and monitor their access control systems. Meanwhile, the PAC controllers used as part of the Ealing Council system utilise the general packet radio service (GPRS) platform, which is a faster and cost

effective means of connecting remote sites via a mobile network.

Sam Flowers, regional sales manager at PAC, explains, 'Daljit and his team can address technical issues, deal with key fob management, examine diagnostics, view system status, set and unset a system, and gain access to event logs and reports – all from a remote location. Without the cloud any problems and issues would need to be dealt with by office-based individuals, which is obviously restrictive and can lead to a delayed response. We also provide a full online training programme to help customers get the best out of their systems and provide full technical support.'

Asked how the PAC Residential Cloud makes his day to day working life easier, Daljit Gill responds, 'I can address connection issues, manage the system and troubleshoot from wherever I happen to be, using my PC, tablet or smartphone. Not only is this convenient, it also saves me a huge amount of time, as I don't have to go into the office to log-in. Two of my colleagues also have permission to use the system remotely – although we could share access with up to 15 administrators if required – with each person only given access to information that relates directly to their role. One of the main features of the system is that it is fully auditable, meaning that any activity can be monitored in real time and traced directly back to a specific user via their unique password.'

Centre Forward

Ealing Council strictly adheres to the General Data Protection Regulation (GDPR) and has implemented a strong data protection policy. PAC Residential Cloud is hosted with The Bunker, a trusted PAC partner, whose UK data centres are located in former nuclear bunkers

and certified to the ISO 27001 standard for information security management.

PAC Residential Cloud also offers Ealing Council some less obvious benefits. Sam Flowers comments, 'The data collected by the access control system can be used to issue an alert if a resident's key fob hasn't been used during a specific period, identify patterns of behaviour that could suggest illegal activity, flag-up if someone is subletting a property or even detect if a tenant is using a cloned key fob. If an alert is activated, measures can then be taken to deactivate a specific key fob. Furthermore, the PAC Residential Cloud has also helped Ealing Council adopt a business as usual approach during the coronavirus pandemic by limiting physical interaction, while still enabling a prompt and effective response.'

Look Ahead

As well as enjoying the operational advantages of the PAC Residential Cloud, Ealing Council is also planning to advance its transition to a fully internet protocol (IP) based access control system by upgrading to PAC's 512DCi digital networkable access controllers. Daljit Gill concludes, 'Installing the PAC 512DCi's will allow us to maximise operational effectiveness through our investment in the PAC Residential Cloud. We will also be able to utilise PAC's high frequency OPS Mifare Desfire EV1 readers, which have been tested to meet Advanced Encryption Standard (AES) 128 bit compliance. This will further reduce the risk of key fob cloning and ensure that our tenants benefit from improved levels of security.'

CONTACT

customerservices@pacgdx.com
www.pacgdx.com

Streamlined Fixed Dome Cameras

Axis Communications has launched new additions to the Axis P32 network camera series. Available as both indoor and outdoor models, these varifocal domes deliver excellent image quality. Enclosed in dust and vandal-resistant IK10-rated casings, they're protected against redirection, defocusing, and impacts. The P3247-LV and P3247-LVE offer 5 MP resolution whereas the P3248-LV and P3248-LVE offer brilliant 4K resolution. The company's Zipstream technology provides support for H.264 and H.265. Featuring Lightfinder 2.0 and Forensic WDR, these cameras deliver true colors and great detail in challenging light or near darkness. They include optimized IR for surveillance in complete darkness while motion-adaptive exposure significantly reduces motion blur from approaching or nearby objects. With two-way audio and I/O connectivity, it's possible to add audio analytics and integrate peripheral equipment. www.axis.com



Video Camera with Built-In AI

Bosch has introduced the Autodome IP starlight 5100i with enhanced image quality and built-in Artificial Intelligence (AI) to help operators react before a potential situation occurs. The camera has a new 1/2 inch camera sensor offering 4MP resolution and 20x optical zoom to detect people or objects at a maximum distance up to 1,676 meters (5,498 feet). It is equipped with advanced motion optimized High Dynamic Range (HDR-X) at 133dB and starlight technology, which allows the camera to provide exceptional image quality during daytime and at lower light levels such as dusk and dawn without blurring of moving objects. The camera is weatherproof with a vandal-resistant housing, expanding its use to demanding city surveillance situations. Built-in AI for video analytics uses metadata to add sense and structure to video footage. It can provide relevant, usable statistics like the number of people entering a specific area, analyze behavior, or assist in enforcing health and safety regulations. www.boschsecurity.com



Smart City Deployment

To make life easier in cities for their inhabitants and to optimize urban infrastructures, networking technology is playing an increasingly important role in obtaining and transmitting data. Most of the devices we use in everyday life are now connected to the Internet. It is a development that is moving fast, as the goal is to keep increasing urban functionality and efficiency. However, device characteristics are usually very different and require special interfaces to adjust the supply voltage, change communication protocols, bundle multiple sensor signals, and more. This interface function can be performed by the Synaps product series. These outdoor connection boxes also provide reliable protection in the event of lightning strikes, interference generated by other devices, or criminal attacks such as vandalism. Synaps guarantees continued operation of all connected devices. www.slat.com



TDSi Launches New Features for Gardis Range

TDSi announced a raft of new features for its Gardis range of integrated software and hardware security systems. Additional features for 2021 include integration options for Lift Control, Area Occupancy, and ANPR – which are all designed to assist with not only security, but also ongoing safeguarding of health and social distancing requirements. Tina Baker, TDSi's Software Project Manager commented, "The new functions are available as licensing options right now, making them an easy and highly affordable addition for any size and type of security and safety project. The expanding Gardis range provides end users with powerful options to scale their security and safety systems to meet rapidly changing needs and circumstances, whilst protecting budgets by ensuring capital expenditure costs are kept to a minimum." www.tdsi.co.uk




WE ARE Suedmetall®

We come from 

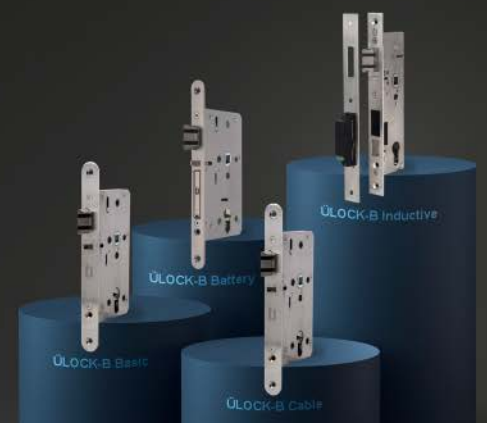
We established in 1995

We produce electromechanic locks 

We introduced the Ülock-B  Inductive

And together we innovate access solutions

Suedmetall®





ACCESS CONTROL

Under Control

Combining High Security and Intuitiveness for Vehicle Access Control

Controlling vehicle access to offices and car parks is a key issue to secure people, property, and data. It is also essential to ensure fluidity. GIT SECURITY asked Vincent Dupart, CEO of STid, to explain the importance of vehicle access control.



STid Spectre long-range UHF reader

GIT SECURITY: Why is it important to combine intuitiveness and vehicle access control?

Vincent Dupart: 7 out of 10 employees drive their cars to work each day. A situation likely to be intensified with the current health crisis. Employees will select their own vehicle rather than using public transport. However, a motorist's daily commute can quickly turn into a nightmare because of traffic jams. At the car park entrance, the situation is no better: They need to stop their vehicle, open the window and present their card until almost touching the reader to gain access. This lack of fluidity raises anxiety. Hence the importance of finding new solutions such as contactless technologies, to simplify the driver's experience.

What are the new advantages of contactless technologies?

Vincent Dupart: Contactless technologies such as RFID, NFC, Bluetooth and IoT, offer new alternatives to allow continuous flow at car parks and secure access by automatically identifying the vehicle and/or the driver. When a driver approaches the car park entrance, the vehicle is automatically detected thanks to a Teletag positioned inside the car and a STid Spectre long-range UHF reader installed nearby.

Spectre ensures a calm and consistent read over an impressive range of up to 13 metres. The car park owners can also opt for multi-antenna access management. Up to four antennas can be connected to just one Spectre reader to tackle all security challenges and fulfil all configurations: Managing a diverse fleet of vehicles (cars, vans, motorbikes...), encompassing wide access points and even smooth access control for four separate vehicle lanes.

How can I ensure that both vehicle and driver are authorised for entry?

Vincent Dupart: The drivers "access rights" can also be controlled thanks to STid Mobile ID. Their identity is also verified before allowing both car and drivers access. This is a level of security that many companies or offices need to ensure. For example, motorcycles in car parks are challenging. The motorcyclist does not have a front number plate for identification, hindering access control for their vehicle. The rider is required to remove a glove to either use a card or a smartphone. With STid Mobile ID, by simply tapping the smartphone inside their fastened jacket pocket, the motorcyclist can gain successful access. This growing need for intuitiveness must never impact on security and data protection. STid ensures security between

the Teletag and the reader and between the reader and the system using the Secure & Smart Communication Protocol (SSCP) protocol, which helps to provide uniformed end-to-end security. This protocol protects the communications of physical and digital access control equipment. It provides a secure connection between the readers (inspection devices) and the management system (concentrator) to guarantee a level of security in line with government requirements. Which explains why 7 out of 10 French banks have opted for STid solutions.

Is the answer only technological?

Vincent Dupart: A prerequisite is to thoroughly analyse your current procedures and a full risk assessment to identify the potential added values of employing new technologies. The same applies for a true Return On Investment (ROI). Our ultimate success is based on attentiveness to market needs and to always propose improved, instinctive and highly secure solutions.

CONTACT

STid
Greasque, France
Tel.: +33 442 126 060
www.stid-security.com



© Assa Abloy Opening Solutions

The “Wireless Access Control Report 2021” can be downloaded free of charge at: <https://campaigns.assaabloyopening.com/wacreport2021>

ACCESS CONTROL

Wireless Access Control – The Future

A New Wireless Access Control Report Identifies Trends in 2021

The 2020s will be a wireless decade. From headphones to vacuum cleaners, consumers reap the benefits when they cut the cables and adopt a wire-free technology. In electronic access control, those benefits include improved cost-efficiency and flexibility, giving facility managers greater control over who should have access, where and when.

A new report from IFSEC Global, Assa Abloy Opening Solutions and analysts Omdia reveals fresh market data generated by a survey conducted at the end of 2020. The respondents were 400 security professionals across Europe and farther afield, including end-users, installers, integrators and consultants serving large corporations as well as small to medium-sized organizations in education, healthcare, industrial, commercial, infrastructure, retail, banking and other sectors.

“Anyone involved in procuring or selling access control, from OEMs and integrators to installers and end-users, will find the new data and analysis within this market report very interesting,” says Russell Wagstaff, platform director at Assa Abloy Opening Solutions EMEA. “Alongside insights on where the market for wireless access control stands today, the Wireless Access Control Report 2021 plots a roadmap for where we are heading next.” This new report is completely free to download via the link shown at the top of this article.

Key Findings

Electronic access control is increasingly a wireless technology. Even after a year when long-term investments have been deferred or curtailed, the report finds increased adoption of wireless locks and access systems. Data from the report’s specially commissioned survey suggests over a third (37%) of end-users deploy wireless locks as a part or all of their access control solution. The corresponding data point from Assa Abloy’s 2014 report was 23%.

The report also examines drivers for the market’s rapid adoption of mobile access technologies. Survey data suggests convenience is king – for both system users and facility managers. “Nearly half (47%) agreed that mobile was more flexible than physical credentials, and 36% believe that mobile credentials make it easier to upgrade employee access rights at any time,” notes the report.

Still To Do

Over 90% of survey respondents reaffirmed the critical role of access control

for integration across building management functions. Half or more would prioritize electronic access system integration with CCTV, alarm and visitor management systems, according to report data. In practice, however, further integration of systems is still on the ‘to-do’ list for many organizations. The report explores why – and highlights the key factors holding businesses back from deeper and smarter integration of building functions.

“Right across the access control ecosystem in 2021, scalability, flexibility, cost-efficiency and convenience are major factors,” adds Russell Wagstaff. The 2021 Wireless Access Control Report also reveals new data and analysis around sustainability, cloud security management, access control cyber-security, wireless lock durability and more.

CONTACT

Assa Abloy Opening Solutions EMEA
Digital and Access Solutions
+49 30 8106 2970
www.assaabloyopeningsolutions.eu

KEY MANAGEMENT

Joint Security Plan

The Merits of Access and Key Control for Cannabis Security

Cannabis is now fully legal in 15 states across the country in the U.S. and decriminalized in 11 others. But as more states sign off on legalized weed, those looking to enter the potentially lucrative retail cannabis market, whether it is medical or recreational, will need to procure licenses or permits to operate. Since cannabis is not regulated by the federal government, every state has its own regulations and application process in place. However, the one constant is that each state requires strict security measures to be initiated to provide for the safety and security of the operation, its associates, and the neighborhood within which it operates. Most states call this a “Security Plan” and require its details be submitted with the application to operate, but what exactly is a “Security Plan?”

Tim Sutton, a senior security consultant at Guidepost Solutions, who is regarded as one of the top cannabis security experts in the field, warns new cannabis operators that a Security Plan is much more than the systems’ integrator’s blueprints or the recommended security devices and technology systems. The project should consist of a security master plan that will encompass security management, security operations and a security technology roadmap. Sutton says that the first step prior to selecting any project’s systems integration team is a consultant that has been previously tested in the highly regulated cannabis market.

“Security systems such as cameras, electronic access control, and alarms are tools. Tools are not solutions; they are tools. A strong security program based upon experience, best practices, and standards must be developed and implemented,” Sutton explains. “A Security Master Plan is what ultimately ensures compliance and is needed for a permit or license to operate.”

Consultants like Sutton, who jumped into the industry during its inception in the U.S., contend that because the legal side of the cannabis industry is still relatively new, businesses that are launching and looking to play by the rules when securing a license and staying compliant

face more complexities due to the lack of federal regulations. However, when it comes to security for grow facilities and dispensaries, there are some cannabis industry best practices that have become standard requirements such as taking sufficient safety measures to deter and prevent unauthorized entrance into areas containing marijuana by implementing secured entrances and an integrated access control solution, ensuring that vital records such as personnel information, inventory information ranging from seed to product and purchase information, be stored in a secure environment with electronic auditable key controls.

Every state also requires that a licensed premise must have a video surveillance system with unobstructed cameras views of any areas where cannabis is handled and provide a visual audit trail for all inventory. Along with this video surveillance system, there must be adequate monitoring and storage of video surveillance recordings. Many retail dispensaries will also stage security personnel during business hours and in some circumstances, 24/7. An alarm monitoring system that can be integrated with video, access control, key control cabinets and storage systems which trigger alerts during unauthorized access is also a required tool in most security plans.

Dealing with Internal Loss

While the security threats to cannabis cultivation centers and retail dispensaries are as varied as the regulations that ensure compliance, employee theft is perhaps

the top threat marijuana businesses now face. According to Marijuana Business Daily, approximately 90% of the financial and product losses in the cannabis industry can be attributed to this cause.

Beyond the obvious security precaution of limiting access to areas within the facilities where cash, product and data information are stored, implementing an electronic key control solution may deter these soft targets from internal threats. A system that locks each individual key in a secured cabinet where only an authorized user who has the proper credentials to remove them for use is a priority. The audit capabilities can track both, the removal from, and return to, the key cabinet and can document that information in the system with details including name of user, time and which key was used. Many grow facilities and manufacturing businesses are also installing secured entrances like mantraps and portals, then doubling down in the

building's interior with multi-authentication enabled turnstiles and biometrics for secured labs and cash rooms.

In a rapidly evolving market like the cannabis industry, regulatory and compliance changes figure to be a constant headache. But a well-planned security blueprint that is based on foundational fundamentals of access and key controls can certainly alleviate some of the stress.

Author

Tim Purpura,
VP Sales & Marketing,
Morse Watchmans

CONTACT

Morse Watchmans
Oxford, Connecticut, USA
Tel.: +1 203 264 4949
www.morsewatchman.com

WILEY

Wiley Industry Days

WIN DAYS
7-9 June 2021

Virtual show with conference, exhibition and networking for automation, machine vision, architecture, civil engineering, photonics, healthcare and safety & security.

Virtuelle Show mit Konferenz, Ausstellung und Networking für Automatisierung, Machine Vision, Architektur, Konstruktivem Ingenieurbau, Photonics, Healthcare und Sicherheit.

www.WileyIndustryDays.com



JETZT KOSTENFREI!
ALS BESUCHER
REGISTRIEREN
REGISTER NOW FOR
FREE VISIT



Miryam Reubold
Tel.: +49 6201 606 127
miryam.reubold@wiley.com



Jörg Wüllner
Tel.: +49 6201 606 749
joerg.wuellner@wiley.com



Dr. Timo Gimbel
Tel.: +49 6201 606 049
timo.gimbel@wiley.com

Shut Up Shop!

Security Solutions for the Retail Industry

SPECIAL
FOCUS

Go on, confess! You have definitely been tempted at some time in your life to steal! You might actually have done it too, either as a pre-meditated act of youthful rebellion or during an opportunistic and momentary lack of self-control. We all know that it's wrong, but some people have put aside their morals and have become regular shoplifters. Leaving aside the very few people for whom theft is a kleptomaniac disorder, the rest cost the retail industry a massive amount of turnover and profit every day, so-called 'shrinkage', which is ultimately added to the prices the rest of us have to pay. GIT SECURITY looks here at a number of technologies that can help to reduce this significant loss.

In the UK in 2019, shoplifting cost retailers a whopping GBP 1.9 billion. The figure for the USA for the same period was USD 17.5 billion. And that's just the so-called 'customers' who make items disappear without having paid for them. Unfortunately, there's the 'inside job' to consider too: employee theft. This is often much more significant than many shop owners realize, or would like to admit. In the UK, a further GBP 1.3 billion worth of goods was removed by light-fingered staff in 2019. Now we're not calling the UK public or the shop employees there particularly untrustworthy because these two figures can sadly be applied, more or less, to almost any other country worldwide. There are various approaches available to change this situation.

Video Surveillance

The good old classic CCTV camera has been around for decades, and has progressed leaps and bounds since its introduction. With highly intelligent

algorithms either built into the camera itself or sophisticated apps studying the incoming images centrally in real time, it is relatively easy nowadays to spot shoplifters in action. No matter whether it's a single thief or an organized band, today's systems can raise an alert when they recognize suspicious behavior based on movement patterns, such as lingering, an unusual grouping of customers or running. Stockrooms and warehouses can also be kept in view and similarly protected against theft by employees.

On the basis of their Wisenet cameras, Hanwha Techwin Europe can provide a complete retail solution that will deliver not only security surveillance but also customer behavior intelligence. Integration with other in-store systems is supported through the devices' open platform approach, for example through the use of AI-based video analytics to ensure the current occupancy, social distancing and mask regulations are being complied with. SMOB provide retailers in France

and neighboring countries with a comprehensive range of anti-theft systems, item tracking and surveillance devices. Bosch Security offer sophisticated retail solutions that provide security and also help to increase customer loyalty and sales. You might also contact Axis who have a comprehensive palette of intelligent systems that work together to provide safety and security, loss prevention and store optimization.

Biometric Surveillance

The subject of face recognition is a hot potato in certain countries and not universally acceptable, amongst others on human rights grounds. Where it is acceptable, legal and implemented however, it can dramatically reduce theft and violence in a retail environment. Obvious signs stating that biometric recognition apparatus is installed in this store can already cause some persistent criminals to turn around on the spot. Standard video security cameras supply

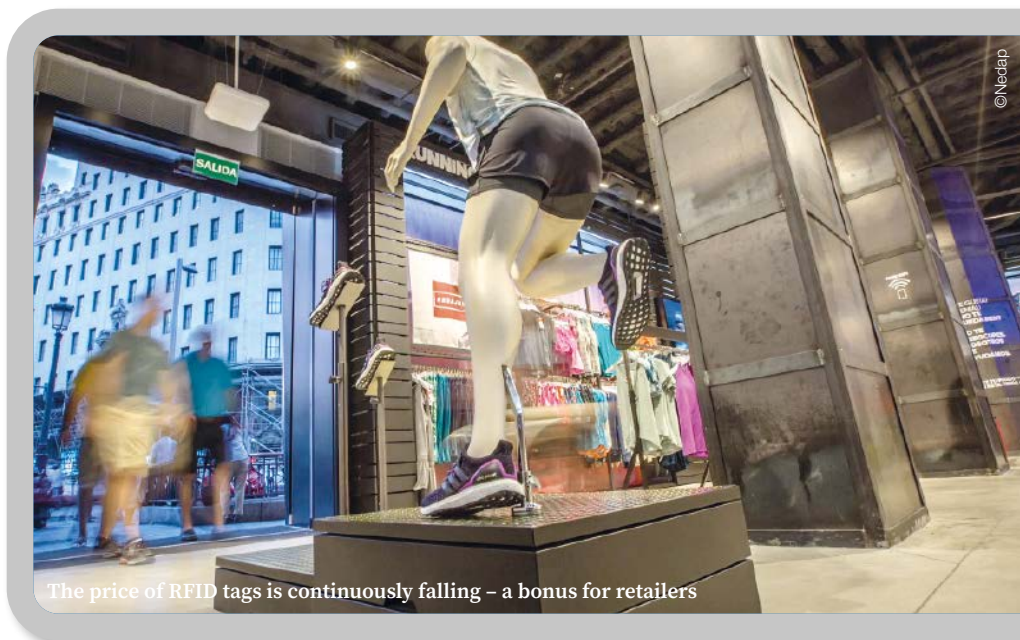
images of shoppers entering the store to be checked against a database of known criminals or troublemakers. Panasonic is one supplier of face analysis systems and their Face Pro system allows recordings to be searched by people's face criteria to see whether they shoplifted and which floors they visited as part of a 'zero tolerance' policy. Returning recognized shoplifters immediately trigger an alarm on entering the store. Pelco facial recognition systems use artificial intelligence-based facial recognition and integrate with third-party systems to provide an efficient solution customized to the particular requirements of a particular store.

Electronic Article Surveillance

Under this heading fall RFID tags – tuned circuits that oscillate and emit a magnetic pulse or a radio frequency that is detected by receivers at the entrance/exit of the store. Century Europe have a range of discreet solutions suitable for various types of goods; electronic items, food-stuffs, health & beauty products, clothing etc. They can be applied to items during manufacture to save in-store effort with each new delivery. Striving to reduce costs for retailers, Nedap Retail offer a spectrum of RFID tags, with more or less features as required.

Smart Shelving

If you've ever wondered just how this much-publicized but so far almost invisible Internet of Things is going to make a difference to your life, here is the answer. Smart shelving continually monitors



The price of RFID tags is continuously falling – a bonus for retailers

the presence of goods, either physically through weight, by RFID, or by cameras. The shelf reports to the central system that an item is underway as soon as it is lifted. If an item has been removed from the shelf, it must, logically, soon afterwards appear at the cash desk. If instead it is detected as it goes through the front door and doesn't first get 'cashed', then it has most likely been stolen – an obvious alert situation. There may well be a perfectly plausible explanation, such as the replacement of faulty goods for example, which can be manually corrected by authorized staff.

Combining inventory management, in-store analytics and loss prevention,

the smart shelf technology of Imco looks after a number of tasks that your staff would otherwise have to do. The American company AWM manufactures innovative smart shelf systems that at first glance just make shopping easier for customers, but in the background provide shop owners with valuable, accurate and real-time data on their product lines. A contactless shopping system called Frictionless has been developed by FLIR. This utilizes the company's own Blackfly camera systems and makes unattended shopping for smaller items a reality – a distinct advantage in these pandemic times.

©Drobot/Dean - stock.adobe.com

WILEY

Read What Is of Interest

To subscribe to the magazine **inspect – World of Vision** simply contact WileyGIT@vuserice.de or register online at <https://www.inspect-online.com/en/subscribe>. And if you chose the e-paper option you do something good for the environment right away.



inspect

WORLD OF VISION

www.inspect-online.com

Signage

The power of a sign is not to be underestimated. If warning signs are strategically placed near where high-value goods are displayed, they will have a high deterrent effect. Any anyone who reads the sign – which in most countries is now mandatory – that cameras are in use and then looks around to see exactly where the surveillance cameras are pointed immediately makes themselves suspicious! Even a statement that ‘All shoplifters will be prosecuted’ sends the warning that staff are on the lookout and that this shop is not going to be an easy hit.

would have to negotiate from the back of the store where the high-value goods are. This way you can also avoid creating ‘dark spots’ that are not covered by security cameras.

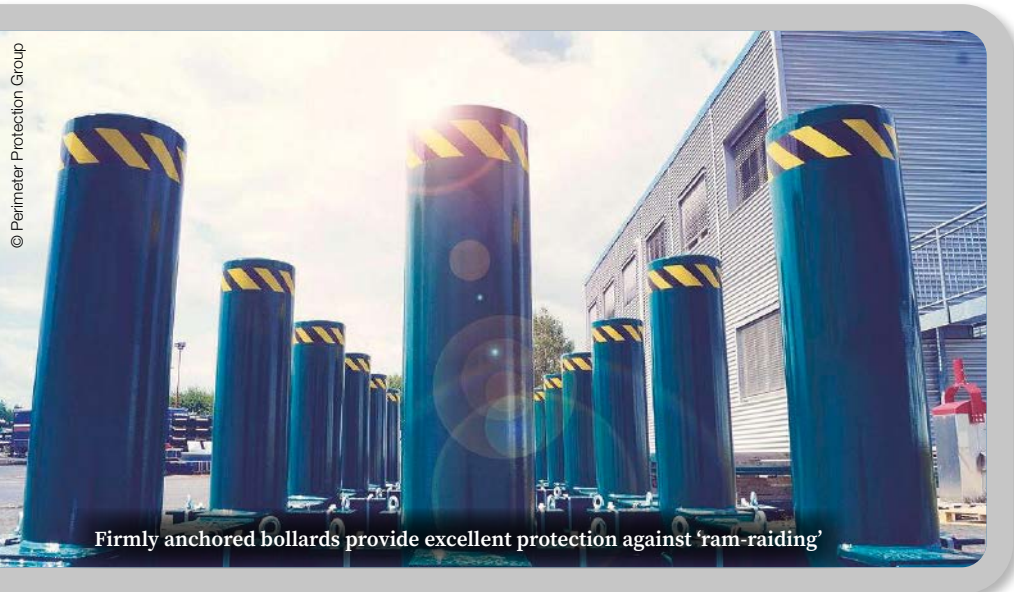
Break-Ins

Of course, theft happens not only when a shop is open – the cover of darkness and deserted streets inspires thieves to break into retail properties and fill their (probably stolen) vehicle with goods. Shopfront design and construction has come a long way in recent years and there are a number of ingenious methods of preventing,

or even voice-controlled. In Austria, Arriba offer a custom-built roll-up grid design, construction in aluminum or steel, and a full installation service.

The third tactic is the use of ‘street furniture’ which, in cooperation with the owners of the land immediately in front of the property, can provide protection against so-called ‘ram raiding’ while simultaneously enhancing the appearance of the street. What look like heavy flower boxes can in fact be disguised bollards that are sunk into the ground below to stop any vehicle from going any further. Perimeter Protection Group operate internationally and have a range of vehicle prevention devices for every situation.

These are just some of the retail security solutions that you might implement to prevent that nasty realization one day that your store has just become the latest statistic in an insecure world. We will probably never manage to make theft impossible, but the solutions mentioned above will make it much less attractive, both for determined and for casual thieves.



Firmly anchored bollards provide excellent protection against ‘ram-raiding’

In America, Signs.com provide a rapid delivery service of signs made of all sorts of materials. While in Germany, Kroschke provide signs in accordance with the basic data protection laws of the EU (called the DS-GVO there), you can easily find local producers of signs compliant with the applicable regulations in other countries too.

Layout

Placing high-value goods near to the main entrance is tantamount to inviting someone to remove them without paying. Accordingly, the deeper you go into the shop, so the higher the value of goods should be, the most expensive being contained in locked, anchored, armored and alarmed display cases of course. But thought should also be given to the ‘routing’ of customers through a store. Well-planned placement of floor stands, bargain bins and free-standing racks will create a natural route for customers to follow while simultaneously building a maze that any shoplifters

or at least delaying, unauthorized access through the front doors when the ‘Closed’ sign is hanging.

The first line of defense is the glass window itself, which nowadays can be almost impenetrable to bullets, pickaxes, sledgehammers and the like. Pilkington are represented worldwide and offer their laminated Optiview Protect OW or the multi-layer Optilam safety glass for shop windows to resist impacts and prevent intrusion.

The second is a perforated barrier that still allows passers-by to take a look at the goods on display, but is firmly anchored either inside or outside the window to prevent entry through a hole made in the glass. In Canada, Glass Essential have a wide range of sturdy but not ugly ways of protecting windows, both from outside and inside. B+B Rolladentechnik based in Berlin will build a roll-up window grid exactly to the size of a shop window and provide a full installation and maintenance service. The grid can be remotely activated via a network

Ariba · www.ariba.at
AWM · <https://smartshef.com>
Axis · www.axis.com
B+B Rolladentechnik
<https://rolladentechnik-bb.de>
Bosch Security · www.boschsecurity.com
Century Europe · www.century-eu.com
Flir · www.flir.com
Glass Essential · www.glassessential.com
Hanwha Techwin Europe
www.hanwha-security.eu
Imco · www.imco-berlin.de
Kroschke · www.kroschke.com
Nedap · www.nedap-retail.com
Panasonic · security.panasonic.com
Pelco · www.pelco.com
Perimeter Protection Group
www.perimeterprotection.net
Pilkington Glass · www.pilkington.com
Signs.com · www.signs.com
SMOB · www.smob.fr

FIRE DETECTION

Hotel Fire Detection Refreshed

Solutions from Global Fire Equipment for Two Luxury Hotels

Fire detection solutions from Global Fire Equipment (GFE), a leading European-based fire detection manufacturer, have been installed at two luxury holiday resorts in Brazil that are owned and operated by the Vila Galé hotel chain.

Portuguese-based Vila Galé is the second largest hotel group in Portugal and ranks among the top hotel groups in the world. GFE equipment has recently been installed as part of an upgrade to the fire detection system at Vila Galé Eco Resort Angra and during the construction of the brand-new Vila Galé Resort Touros.

GFE's distributor for both these projects was JVT Equipamentos who also acted as Vila Galé's technical advisors on the projects. Vila Galé was already familiar with GFE's fire detection solutions as prior to these latest installations, JVT Equipamentos had advised Vila Galé on the purchase of GFE equipment for two of its hotels in Brazil.

Vila Galé Eco Resort Angra is a 5-star all-inclusive eco resort located in Brazil's Atlantic forest. The hotel has 319 air-conditioned rooms, all of which have balconies with views of the sea, mountains or the pool. The resort spans 1,500 square meters and includes leisure areas, water sports, spa facilities, three bars and five restaurants.

20-Loop System

When Vila Galé was looking to replace the existing E3S fire detection system at Eco Resort Angra, it approached JVT Equipamentos to design and supply a new system, with fire protection system supplier, Ekiper Fire, appointed to install and commission the system. The chosen 20-loop system comprises fire alarm

control panels from GFE's Octo+, Gekko and Node Plus ranges, along with approximately 900 ZEOS AS-S smoke detectors and six ZEOS AS-H heat detectors. As part of the contract, Ekiper Fire will provide ongoing maintenance support for the hotel's fire detection system.

Marco Vieira, Commercial Director at JVT Equipamentos, comments: "The installation process at Eco Resort Angra ran smoothly and the hotel was able to remain open to guests throughout the installation works. One of the challenges Ekiper Fire's installation engineers faced was with the length of the existing cables used throughout the hotel. To avoid having to change the existing infrastructure, we advised the project engineers to cut the cable loops in half, reducing their individual length and to create a data network for use with GFE's Chameleon Networking System (the first in Brazil), in order to meet Vila Galé's requirements."

New-build Five Star Resort

Fire detection equipment from GFE has also been installed at the hotel chain's brand-new 514-room Vila Galé Resort Touros in Rio Grande do Norte on the coast of northeast Brazil. Vila Galé Resort Touros is a 5-star all-inclusive resort which incorporates accommodation with a restaurant, water park, kids' club, children's playground, outdoor swimming pool and bar.

JVT Equipamentos was appointed to design and supply the fire detection

system for the new hotel, with specialist fire systems installer, TecneTecnologia, undertaking the installation. The installation process went smoothly and took 45 days in total, with all work completed prior to the hotel opening to guests. The 18-loop GFE system supplied by JVT Equipamentos comprises Node Sub Panels, Juno Net and Junior Mini-Rep panels, along with more than 1,000 Zeos AS-S smoke detectors and 43 AS-H heat detectors.

Jose Antonio Bastos, Vila Galé's Operational Director for Brazil, comments: "Our Eco Resort Angra and Resort Touros are the third and fourth of our Brazil-based hotels to benefit from GFE's fire detection systems, and construction work is already underway on two more hotels in Brazil where we have also chosen to install GFE equipment. The systems are both highly reliable and very competitively priced. We have, once again, been very impressed with the high quality of GFE's products and their excellent standard of customer support and service. We look forward to collaborating with them again on future projects."

CONTACT

Global Fire Equipment SA
São Brás de Alportel, Portugal
Tel.: +351 289 896560
info@globalfire-equipment.com
www.globalfire-equipment.com



SPECIAL FOCUS

According to Fire Safe Europe, there are 5,000 fire incidents every day across the whole of Europe. Fires are a health factor, a cost factor and have great impact on polluting our environment. That's why GIT SECURITY is exploring the topic of fire safety in Europe and discusses here the 7 layers of fire prevention established by the Modern Building Alliance.

FIRE SAFETY

European Market Trend: Fire Safety 2021

Fire Safety in Europe: Seven Layers of Fire Protection

Each country in Europe has their own fire regulation and laws, however, there has not been made a coordinated approach to fire safety – at least none that is spanning across Europe. In November 2020, the European Fire Safety Alliance (EuroFSA) co-organized five high-level online events about fire safety, in which more than 32 speakers shared their expertise and recommendations to bridge gaps and define actions for 2021. Supported by members of the European Parliament, such as Maria da Graça Carvalho (Portugal), Sean Kelly (Ireland), Adam Kosa (Hungary), Carlos Zorrinho (Portugal) and Zeljana Zovko,

they are prepared to engage with the European Commission to improve fire safety for all.


Action Plan

Nonetheless, tremendous improvements have also been made over the past years: Fire fatalities have fallen by 65% in Europe over the last 30 years (Modern Building Alliance). Zooming in on the micro perspective, GIT SECURITY wanted to highlight some steps, so that anybody who is responsible for fire safety in a building can check, whether they are up to date with their technology and assess what they have already established.

There are seven layers of fire safety in buildings (Modern Building Alliance) which will be discussed further to create awareness and give some example solution providers that can be contacted.

Layer 1: Prevention

The first point starts before a fire has even started. There are many measures that can be taken when implementing an effective prevention strategy. One of them is understanding the building and understanding the risks and causes of fires; so, it is really about education and awareness. Still one of the main causes of accidental fires in Europe is smoking and



Maximum safety
with high immunity
to false alarms



TITANUS®

... with fire protection solutions made in Germany

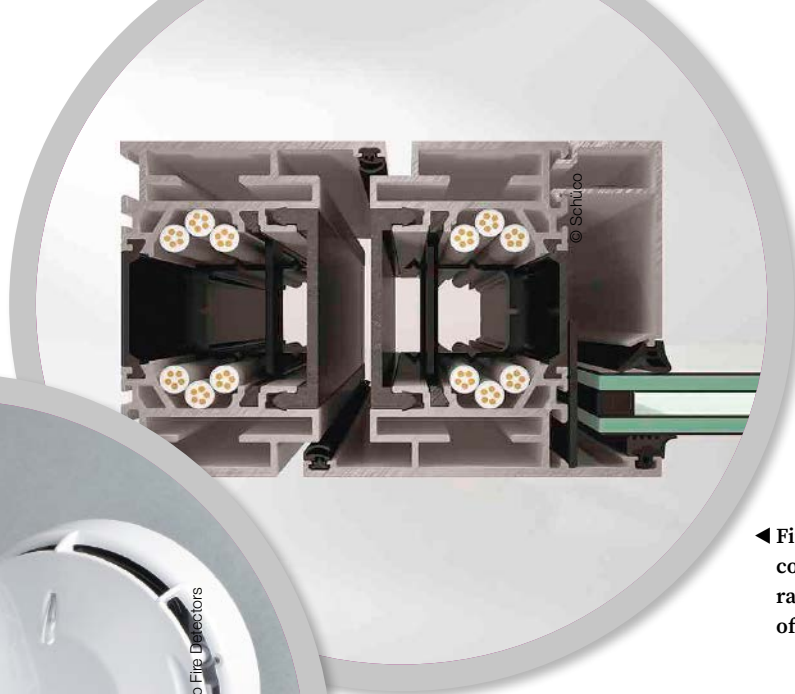
Business interruptions due to false alarms cost time and money. Even under most difficult application conditions, LPCB and VdS certified TITANUS® air sampling smoke detectors and WAGNER's fire alarm systems allow businesses to operate with a high level of security against false alarms. Furthermore, TITANUS® prevents downtimes and failures. Thus, operational processes stay active, people and environment are reliably protected.

WAGNER offers service and maintenance 24/7 – with subsidiaries

in your vicinity! Get more information on

www.wagnergroup.com

WAGNER® 



◀ **Fire-resistant aluminium construction from the FireStop range with 30 minutes of fire resistance**



▲ **The Soteria Optical/Heat Multisensor Detector uses new optical sensing technology, PureLight, to detect smoke particles entering the chamber and is fitted with two thermistors for detecting heat**

electrical faults as well as cooking and the use of candles and matches. The best thing you can do for fire prevention is to make sure your buildings and premises are in shape – check on electrical cables, check regulations in your country. And be sure to get informed about which fire protection system is most suitable for your premise. Some systems even make sure that fire can't even ignite in the first place.

For example, the company Wagner, has developed an Oxygen Reduction System. Three components are necessary for fires to develop: oxygen, heat energy and fuel. If one of these three components is taken away, there is no way a fire can break out. OxyReduct is based on this principle. By reducing the oxygen content of the air, it literally “takes the fire’s breath away”. The systems produce nitrogen from the ambient air and introduce it into the previously defined protected area. In this way, the oxygen

concentration there is reduced below the specific ignition threshold of the materials mainly stored there. In this protective atmosphere, a fire cannot develop nor can it spread any further. However, since a smoldering fire can still occur despite the oxygen reduction, this solution also includes a system for early fire detection with air sampling smoke detectors – which brings us to the next layer.

Layer 2: Detection

In the second layer we think about what happens when a fire breaks out. In fact, the worst that could happen to a fire, is its early detection. So, what needs to be done in this case is to create as much time as possible so that building managers can react, evacuate and do everything that needs to be done in case of emergency. Thinking about the best detection system with smoke detectors, smoke alarms or video fire detection – even gas detection or CO₂ detectors. The market has a lot to offer. For example, the latest collection of Soteria addressable fire detectors by Apollo Fire Detectors. Soteria detectors are user-programmable and can be set to a sensitivity mode best suited for the application. This provides reassurance in installations where adaptability to changing conditions is paramount.

Layer 3: Early Suppression

So, when fire is detected, the next handy helpers are extinguishers or sprinklers that activate within minutes. Automated fire suppression systems can help by activating automatically wherever a fire is detected. Johnson Controls, for example has a comprehensive range of fire sprinklers for residential, commercial, and

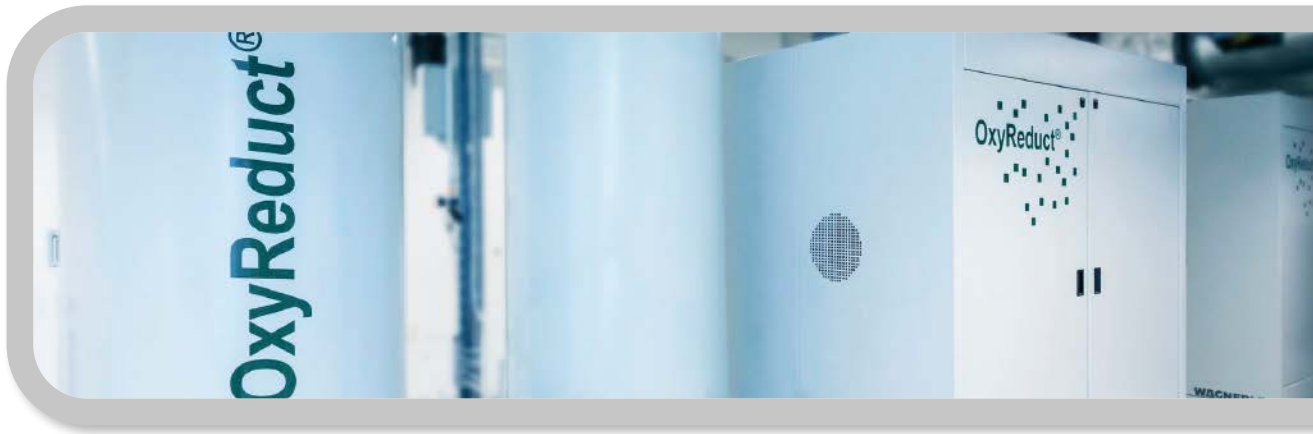
industrial applications. They also have a deep portfolio of fire sprinkler systems for storage applications. These systems can be customized for almost any type of fire suppression solution.

Layer 4: Evacuation

Having done all of the above, it's time to evacuate. Especially in case the fire cannot be stopped with these measures. Safe evacuation of the building's occupants is first priority. Does your building have escape routes that are accessible? Do you maybe have clutter stored on them? If not, are they well-lit, short and smoke-free? Do the occupants know about them and how to access them? Having escape routes is part of the building design, but the knowing about them is part of a functioning training and education system.

Versatile addressable single loop fire control panel from Global Fire Equipment (GFE) ▼





OxyReduct is based on this principle: By reducing the oxygen content of the air, it literally “takes the fire’s breath away”

Some best practices are shown in Slovenia where they developed an information campaign for citizens. Another initiative comes from the Frankfurt Fire Brigade in Germany who organizes safety checks of high-rise buildings.

Layer 5: Compartmentation

To stop fire from spreading to other rooms, it is most important to keep it contained in the compartment of origin. This should also help to avoid corridors and escape routes becoming unsafe during evacuation. Physical barriers like fire doors and fire walls, floors and sealing of joints and penetrations are instruments for compartmentation. A high risk that nihilates a great compartmentation system is fire spreading on the façade.

One provider specialized compartmentation is Schüco. With their Schüco FireStop ADS 90 FR 30 fire protection system they have created a fire-resistant aluminium construction from the FireStop range with 30 minutes of fire resistance for high flexibility and minimised complexity. The innovative, 3-chamber open rebate profile geometry with a basic depth of 90 mm enables flexibility when there are changes in application while the building is in use. The subsequent addition of cables for providing electricity to the doors or a change in the lock technology, e.g. from single-point locking to multi-point locking, is possible without great effort. In this way, in conjunction with other adjustments, a fire door can be upgraded with burglar-resistant components, for example.

Layer 6: Structural Safety

This layer considers a worst-case scenario. If the fire is to spread through the building, it is existential that the building structure is solid and will not collapse. Fire safe structures can be determined

through the standard fire resistance test on structural elements and assemblies. What has become clear from recent research is that combustibility of material is not necessarily bad for structural safety: Concrete, steel, wood, composites and elements with combustible products can be used in structures.

Layer 7: Firefighting

Professional fire fighters can only be as good as the time they have left to get to the fire. Their training and actions are what other people must rely on, so let's not make it harder for them than it already is and keep the first six layers in check.

Solutions

Get an idea of what technologies are currently on the market. We have collected some of the latest solutions in fire protection ranging from detectors to alarm systems.

Global Fire Equipment (GFE) has launched a versatile addressable single loop fire control panel with advanced connectivity. The G-One has been designed with affordability and flexibility in mind. Thanks to its sophisticated design, easy installation and intuitive commissioning, it is an ideal solution for a wide range of single loop applications, from offices and restaurants, to shops, schools and more. The control panel can be either surface or recessed mounted.

Another provider for a complete fire alarm system is Bosch. Bosch can provide users with fire protection from A to Z: Detectors, video fire alarm, voice alarm and more. Smart Safety Link is one of the most reliable and secure ways to combine Fire Detection and Voice Alarm. The Bosch Safety Systems Designer makes planning of fire alarm systems (EN 54 portfolio) easy. And to manage fire

alarm systems, they use their remote services over IP.

Siemens is another solution provider and specialized in fire protection. Siemens' Cerberus Pace Compact extends capabilities in public address and voice alarm. The new compact version of CerberusPace Modular system, further extending the range of applications in which the public address voice alarm (PA/VA) solution can be employed. Together, CerberusPace Modular and Compact offer a comprehensive PA/VA solution, which can be integrated with fire protection and danger management systems.

References:

Apollo Fire Detectors

www.apollo-fire.co.uk

Bosch Security Systems

www.boschbuildingtechnologies.com

European Fire Safety Alliance (EuroFSA)

www.europeanfiresafetyalliance.org

Global Fire Equipment (GFE)

www.globalfire.pt/en

Johnson Controls

www.johnsoncontrols.com

Modern Building Alliance

www.modernbuildingalliance.eu

Schüco

www.schueco.com

Siemens Smart Infrastructure

www.siemens.com/buildingtechnologies

Wagner

www.wagnergroup.com

Author

Lisa Holland,

Deputy Editor in Chief of
GIT SECURITY EMEA



FIRE DETECTION

Anti-ligature and Anti-vandal

Resolving Fire Detection Challenges in
Secure Mental Health Environments

Within a mental health facility designing or even upgrading system infrastructure is always a challenge due to the nature of the environment. Fire alarms systems are no exception. Compared to an ordinary installation, extra considerations must be taken, when designing a new system or upgrading an existing area, to ensure the most secure environment for the patients.

In the UK, issued by the Department of Health, Health Building Notes give “best practice” guidance on the design and planning of new healthcare buildings. For adult acute mental health units, the Health Building Note 03-01 recommends: ‘All furniture and fittings are required to be robust, anti-ligature, prevent opportunities for concealment and meet infection control requirements, while being as domestic in style as possible and not offering opportunities for easy lifting or breakage. This is particularly important in rooms where service users are unsupervised, such as the bedrooms and en-suites.’

Alongside the standard challenges that face a fire alarm system, unique issues relating to the complexity of the healthcare environment become apparent. These include:

- Damage to the fire alarm system components, which causes:
 - Potential harm to patients or staff
 - Interruption to system operation
 - False alarming
 - Interruption and cost to facility due to repair works
- General false alarming
- Difficulty in maintenance of alarm system by fire alarm professionals and access to site

- Ongoing cost of ownership

Anti-ligature and Anti-vandal Fire Detectors

In a mental health facility fire detection is required, not only in all circulation areas but also, in patient bedrooms where they can be left unsupervised.

The UK Health technical memoranda (HTM) 05-03 provides guidance on fire safety measures for health sector buildings and premises. HTM 05-03 Part B mentions: ‘Fire detection and alarm systems references BS5839 Part 1 Code of practice for design, installation, commissioning and maintenance of systems in non-domestic premises and recommends an L1 system category for hospital premises.’ L1 is defined as ‘automatic fire detection and fire alarm systems intended for the protection of life, should be installed throughout all areas of the building.’

The standard design of a fire detector does not meet anti-ligature and anti-vandal requirements due to the possibility of removing the detector from its base. Doing so will reveal the wiring which can lead someone to inflict self-harm. An alternative is a load release anti-ligature detector, which operates on a magnetic base with concealed wiring. While

approved, they still pose a risk to patients and staff as the detector itself can be used to cause harm. Another disadvantage is that once the detector is load released it is no longer operational and will cause a lapse in system integrity.

There is, however, an innovative solution. Soteria Dimension is an anti-ligature and anti-vandal flush mounted detector, developed by Apollo Fire Detectors, the UK’s leading manufacturer of fire detection and alarm devices. Apollo’s Soteria Dimension Specialist Optical Detector completely removes the risk to the patient and staff and ensures continuous fire system integrity. The system Dimension incorporates unique optical sensors that streamline the design and enable flush mounting. Using a combination of infra-red LEDs and photodiodes, the sensors detect smoke particles, while chamberless technology eliminates dust and insect ingress to reduce false alarms.

The shock resistant metal faceplate is fitted with anti-tamper screws ensuring that the detector is completely secure, minimising safety hazards. Besides full compliance with the European Standards EN54 Part 7 for an optical smoke detector, Dimension has been certified to meet:

- DHF TS001 for anti-ligature use in specialist areas.

- Ministry of Justice Specifications STD/E/SPEC/038.

Soteria Dimension is also fully backwards compatible and can be added or retrofitted to any existing Apollo protocol system, allowing updates to existing sites to reduce the risk of health hazards, damage to the system and unwanted expenditure on repairs.

False Alarms

False alarms are defined as:

- The activation of the fire detection and alarm system resulting from a cause other than fire.
- A false alarm becomes an Unwanted Fire Signal (UwFS) at the point the fire and rescue service is requested to attend.
- This is defined by the Healthcare Technical Memorandum 05-03 (HTM).

False alarms can create immediate risk to the patients due to disruption of the staff’s care for them and potential need to re-locate the vulnerable population. It is especially disruptive in mental health facilities where even the sound of an alarm can cause needless distress. There are multiple causes to false alarms in Healthcare premises as defined by HTM 05-03 Part H. Where causes like cooking, smoking, design faults and good intent can only be addressed by change in the system layout or operational procedures of the facility, fire detection equipment can also aid the reduction of false alarms.

As opposed to a standard smoke detector, Apollo’s anti-ligature and anti-vandal Soteria Dimension uses chamberless technology. While operating principles are the same, Soteria Dimension utilises a virtual chamber. The light scattering happens outside of the detector but still registers on the receiver like any ordinary detector. Alongside a virtual chamber, Soteria Dimension uses advanced drift compensation. This adjusts the sensitivity based on the build-up of dirt to prevent it misinterpreting dust for fire. This technology in combination with a completely sealed casing reduces false alarms from insect ingress and dust.

Maintenance

Scheduled maintenance works can be a challenge within a secured facility. That’s why it is extremely important to ensure time on-site is utilised effectively.

To clean and maintain a standard detector, you would have to remove the detector head and clean out the chamber. This isn’t the case for Soteria Dimension. Without the need of a sensing chamber, all you have to do is wipe the faceplate with a dry lint-free cloth, making it far

easier to clean, needing no extra training to keep maintained. And with multiple sensitivity modes available, Soteria Dimension has a much longer lifecycle.

Built-in isolation provides the option to identify detectors that are present when dusty works are being conducted and isolate them from the system. This removes the need to detach the detector every time construction works are ongoing. If a detector is faulty, isolating it will prevent unwanted alarms without compromising the integrity of the whole system. Without built-in isolators you’d have to disable the whole loop.

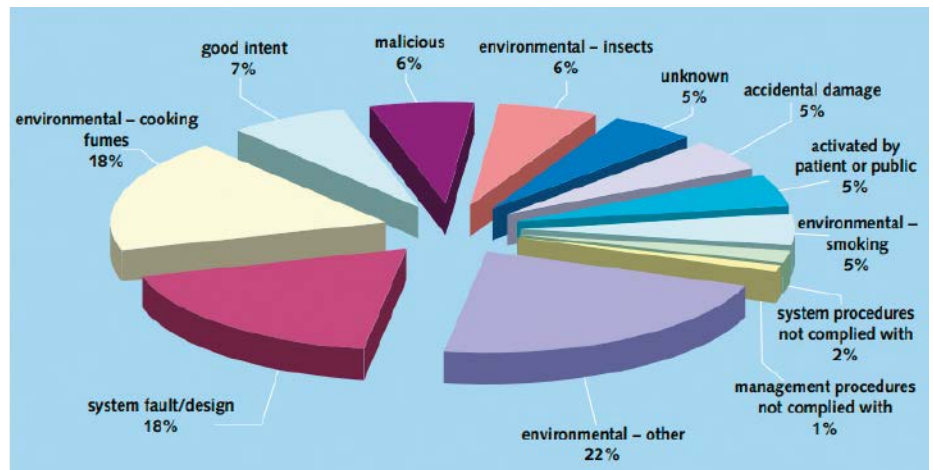
Total Cost of Ownership

Significant attention should be given to life-cycle costing, and the fit with the

able to work on legacy systems. This provides a futureproof design, supporting seamless upgrades and resolves issues with obsolete components by offering modern replacements.

The cost and complexity of renovation itself can vary depending on the type of system installed. Some NHS sites have experienced very high costs of ownership for closed protocol systems. Closed protocol can be described as a system where only a single supplier of installation and maintenance services is authorised to work with the fire system.

The ownership of systems like this means that the building owner is locked into a contract and the only way out is a full system replacement. A fire system that allows the customer to choose be-



Reported causes of false alarms in healthcare premises (HTM 05-03 Part H)

longer-term commissioning and service planning strategy. A degree of ‘future-proofing’ should be built into development plans to ensure that services can meet current and anticipated future need.

Hospitals and mental healthcare facilities are frequently upgrading and constructing new buildings, therefore a number of factors should be considered when designing and purchasing a fire alarm system for a healthcare unit:

- the lifetime of a fire alarm system
- the ability of seamless staged upgrade
- the option to extend
- the cost of the ongoing maintenance contract
- and the number of suppliers, who can offer the service

All Apollo addressable product ranges, including Soteria Dimension, feature backwards compatibility and open protocol. Backwards compatibility ensures that newer versions of Apollo devices are

tween any qualified engineer to service/install a system is known as Open Protocol.

Fire detection in hospitals takes a lot of forethought and effort to get right, there are many challenges to consider when designing an optimal system. Balancing vulnerable people protection and system design, cost and false alarm rejection, regular maintenance and minimising patient disruption. Apollo’s Soteria range including Soteria Dimension can be utilised to solve unique problems that face hospitals and mental health care facilities.

CONTACT

Apollo Fire Detectors
 Havant, UK
 Tel.: +44 2392 492412
 info@apollo-fire.com
 www.apollo-fire.com

FIRE DETECTION

Hot Stuff!

Preventing Fires in the Recycling Industry



While the benefits of recycling have been known for years, what people often don't realize are the risks attached. The waste industry deals with a number of potentially combustible materials, from aerosols to lithium-ion batteries. And when these are all put together and processed, the chances of a fire are high. Mylinks installed a variety of Hikvision cameras to spot trouble early.

On top of the obvious safety risks caused by fires, there are also the environmental and cost implications, with damage to machinery that can cost millions. The industry is also regulated by an environmental organization called DREAL and recyclers are required to equip their sites with fire prevention equipment. In fact, the recycling industry in France has the highest level of reported fires of all industries. That is why one of the leading French recyclers turned to technology to help them. The solution was made up of Hikvision technologies by Mylinks, a specialized fire detection solutions integrator.

It is important for any system to detect a fire as early as possible and alert relevant authorities quickly. The system also needed to account for the site's existing operational constraints like working time, and the heat generated by equipment such as forklifts, cranes, or trucks. To successfully counter the risk of fires, the system needed to integrate with the fire prevention infrastructure already installed in the premises. This ranged from compartmentalization methods, like fire door management and water curtains, to fire 'extinction' devices, like water cannons and solenoid valves.

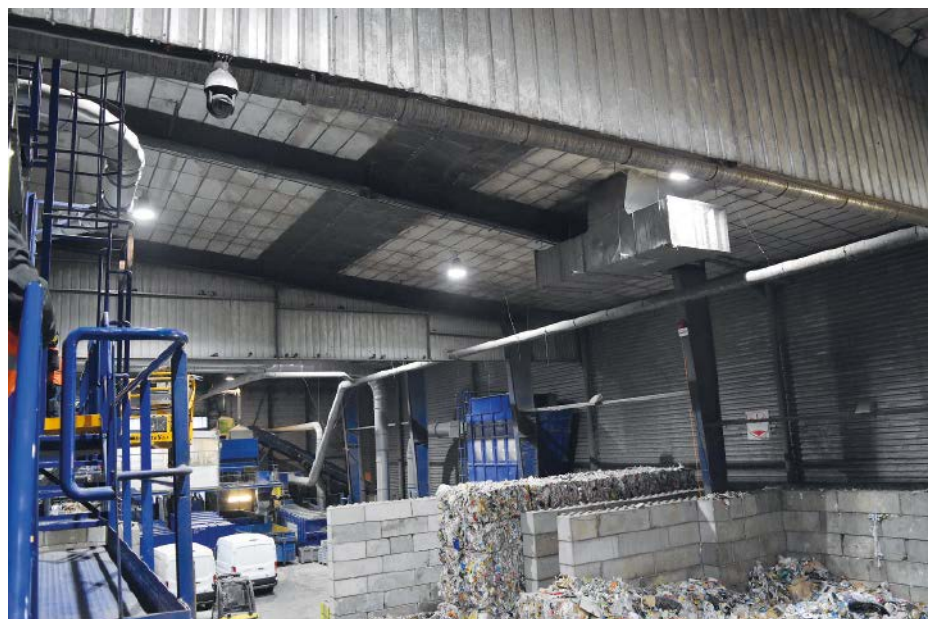
One challenge was to design the system precisely so that the camera could

work seamlessly with the water cannons. In particular the system needed to be designed in such a way that the recycling site could cancel the water spray in the rare case of a false alarm.

Temperature Change

Mylinks installed a variety of Hikvision cameras including bi-spectrum dome cameras (DS-2TD4136T), thermography turret cameras (DS-2TD1217-2) and

thermography cube cameras (DS-2TA21-2AVF or DS-2TD3017). A thermography dome camera is installed at the center of a large building on site. The camera can detect a change in the emissivity of an object or surface when temperature rises, for example, so it can raise an alert. In this recycling solution, water cannons are configured to respond to these changes. They are placed to the left and right of the dome camera, and are part of



the extinguishing process. Mylinks calibrated the devices so that when an elevated temperature is detected, the relevant cannon responds immediately by spraying water into that specific area. The enhancement of a thermal camera makes it possible to detect and extinguish very quickly if a fire does start.

However, the focus of course is on prevention, so the system performs regular tests. A daily motion test and an electrical signal check the integrity of the lines controlling the fire valves. Any anomaly detected during these operations sends an error message to the fire panel where the operator can take the necessary action without delay.

In addition, thermography bullet cameras (DS-2TD2136T-10) and bi-spectrum bullet cameras (DS-2TD2636T-10) are installed in indoor and outdoor locations on the site to monitor paper, plastic, wood, metal and the waste electrical and electronic equipment (WEEE) storage. Even the conveyor belt of the sorting machine is covered by a thermography cube camera (DS-2TA21-2AVF). This prevents burning waste from entering the machine. The site guardian also uses a handheld thermography camera (DS-2TP31-3AUF) to manually check alerts or sensitive points during monitoring 'rounds'.

Multiple Alerting

The system is set up to send alerts when a hot spot is detected. During the day, this is an 'alarm' in the site monitoring center, a call to the site manager, and/or an audible message via loudspeakers on the site itself. At night, the alert is sent to a remote monitoring center where an operator can then check if there is a real fire and call the fire services. The site manager is also informed by the remote monitoring center. Since the cameras were installed, multiple fires have been detected immediately on the recycling site during summer. The site operators were able to understand more about what happened, whereas with traditional fire detectors they would just have had a signal without any information on how the fire started.

Albert Sintes, chief technical officer and associate of Mylinks, says: "These cameras were chosen because of their superior range, accuracy ratio and extended temperature range. We found Hikvision technical support reactive and of high quality. We were also able to easily integrate the cameras with other brand solutions such as Hydrotop, Milestone and Vanderbilt and configure them to this specific customer's needs."

Using a variety of different thermal cameras, the amount of fires in this high fire risk industry have been reduced. This has had a positive effect on the recycling company's costs, but also, more importantly, reduces the risk to the people and the environment around the site.

CONTACT

Hikvision Europe
 Hoofddorp, The Netherlands
 Tel.: +31 23 554 277 0
 marketing.eu@hikvision.com
 www.hikvision.com



◀ Thermography bullet and cube cameras secure the facility

CHEManager.com

International Issues

Your Business 2021 in the Spotlight

FEATURES:
SPECIALTY CHEMICALS,
LOGISTICS

MARCH



FEATURES:
PHARMA & BIOTECH,
INNOVATION

SEPTEMBER



FEATURES:
DISTRIBUTION,
PROCESS TECHNOLOGY

MAY



FEATURES:
REGIONS & LOCATIONS,
CIRCULAR ECONOMY

DECEMBER



Editorial
Dr. Michael Reubold
 Publishing Manager
 +49 (0) 6201 606 745
 mreubold@wiley.com

Dr. Ralf Kempf
 Managing Editor
 +49 (0) 6201 606 755
 rkempf@wiley.com

Sales
Thorsten Kritzer
 Head of Advertising
 +49 (0) 6201 606 730
 tkritzer@wiley.com

Jan Kaepler
 Media Consultant
 +49 (0) 6201 606 522
 jkaepler@wiley.com



FIRE PROTECTION

A Sweet Solution

Diamant Zucker: a Fire Protection Solution using Oxygen Reduction

Icing sugar, brown sugar, rock sugar, sugar in packets and tins: sweetness is all around you in the factories of the sugar suppliers Pfeifer & Langen. The company has been supplying sweet products made from beet and cane sugar to the food industry and end users for 150 years, and sells them under the Diamant Zucker brand. The company, founded in Cologne, has numerous locations throughout Europe and is one of the largest sugar suppliers. Mid 2020, a new high-rack warehouse was put into operation at the factory in Poland – with an appropriate fire system from Wagner Poland.

Pfeifer & Langen Polska S.A. has built a new high rack warehouse at the Środa Wielkopolska factory near Poznań. This is where sugar specialties such as cinnamon sugar or syrup are stored. Up to 24,000 palettes can be put into the 35 meter high, 140,000 cubic meter warehouse. It is directly

connected to the sugar factory via an air lock. The storage and removal of goods as well as their consignment takes place automatically.

But not only the newly-built warehouse itself – and the investment tied up in it – needs special protection. „The most important thing in this case is the stored sugar“, says Andrzej Biedulski, project leader at Pfeifer & Langen Polska. That is why the company decided right from the beginning against a water or foam-based solution. This is because the extinguishant itself almost inevitably causes damage, and so an alternative fire protection solution had to be found. The company found the Wagner Group and its expertise in active fire prevention.

Protect the Sugar, Maintain Availability

Pfeifer & Langen Polska defined their protection requirements right at the start together with the team of Ireneusz Bruski, CEO of Wagner Poland. Apart from the protection of staff, the following aspects had also to be considered: in an emergency, no sugar must be allowed to go up in smoke or soot nor be destroyed by water extinguishant. Operational processes as well as the flow of

◀ **Most of the fire protection equipment, such as the nitrogen generators and control cabinets, was built into a container beside the high rack warehouse**





Almost the entire fire protection equipment is built into a compact container

goods and other logistical processes must be maintained in the case of an emergency and the goods must always remain available for customers.

The sugar products that are made in the production halls are packed and stacked on pallets there before they are brought to the warehouse for onward forwarding. This takes place according to today's standards and totally automatically. Shelf rack feeders and conveyors are used for this. These and the packing equipment are potential sources of fire that had to be considered. Only by making a risk analysis can the ideal fire protection solution be found for each individual area to be protected.

Various different types of fire risk must be considered in high rack warehouses. An increased level of automation in the production area and in the warehouse itself, and the consequent higher number of electrical components, presents a higher risk of fire. With a storage height of up to around 35 meters any fire would be accelerated because of the narrow aisles and the chimney effect. Equally, the dense packing of the goods as well as the packaging material made of paper and the storage on wooden pallets has an effect on the speed that a fire spreads. It is also necessary to consider the complex production processes because of the connection to the production area via an air lock as well as the high sensitivity of the goods to smoke and moisture. An applicable solution can be found if all these risk factors are taken into account. And always with first priority is the target of preventing a fire in the warehouse at all.

Solution in a Container

Four Oxyreduct V-Line systems together with a very early fire detection system form the basis of the fire protection solution. The V-Line systems produce nitrogen from the ambient air and feed this in the previously defined area to be protected. This suppresses the oxygen concentration below the specific inflammation level of the materials that are mostly stored there. A fire can neither develop nor spread in this protective atmosphere. But in spite of this, a smoldering fire can still happen and so this solution includes a system with air sampling smoke detectors to provide early detection of fires.

The Titanus extraction points are above the alleys of the high rack warehouse and constantly take samples of the air from there. Even the tiniest pyrolysis particles will therefore be

The sugar products, packed onto pallets, are stored in an automated high rack warehouse up to 35 meters high before being dispatched ►

detected as early as possible. The devices are up to 2,000 times more sensitive than conventional single-point smoke detectors.

A special aspect of the solution for Pfeifer & Langen is that a large proportion of the fire protection equipment, such as the nitrogen generators and electrical control cabinets, are not built into a separate room but were built instead into a container positioned beside the high rack warehouse. „Such an external equipment room is ideal for maintenance and service purposes because it is easily accessible. We were also able to save on construction costs because a separate room in the warehouse for the equipment was not required for the fire protection system“, said Ireneusz Bruski, CEO of Wagner Poland of the reasons for the container-based solution.

The high rack warehouse started operation in the middle of 2020. Since then, the various types of sugar products have all been safely shipped to many countries throughout Europe.

CONTACT

Wagner Group GmbH
Langenhagen, Germany
Tel: +49 511 97383 0
info@wagnergroup.com
www.wagnergroup.com



SENSORS

Focused on the Future

Interview with CEO Ulrich Balbach

Despite the corona pandemic, a lot is happening at Sensor People from Owen in Baden-Württemberg, Germany. In the future, Leuze electronics will only operate under the Leuze brand name. At the same time, the company is becoming even “yellower” and is positioning itself more strongly in this market segment with its own business unit for safety. GIT SECURITY EMEA spoke with Ulrich Balbach, CEO of Leuze.

GIT SECURITY: As of this year, Leuze electronic no longer appears in communications with the additional “electronic” but rather only as Leuze. Why this step?

Ulrich Balbach: When Leuze electronic was founded in 1963, the term electronic was virtually synonymous with innovation. Today, however, it goes without saying that electronics are built into our sensors. Now the name of the brand alone – in its simplicity – should stand for the highest level of innovative strength.

How do you see yourself today?

Ulrich Balbach: Thanks to our more than 50 years of experience, Leuze is a true expert in sensor applications in automation technology. Leuze is a high-tech company, a driver of innovation. But we are innovative not only because we develop new technologies. For us, innovation means structuring technology so that a concrete benefit arises for our customers with respect to their specific application. This, paired together with our in-depth application know-how in our focus industries – that is our strength. It provides guidance on how we need to build a sensor with regard to its performance, its design and its operation – always with the goal of providing the maximum user friendliness and integration capability. We develop these innovations with a goal-oriented approach, always for the benefit of our customers. Consequently, we often set new technological standards that differentiate us on the market and lie at the limits of what is possible.

Is this differentiation the secret to your success?

Ulrich Balbach: If it was a secret I probably wouldn't be revealing it here... but it can certainly be said that the entire Leuze company is systematically oriented towards a policy of

”

The best, most innovative technology is useless if it does not meet the needs of the customer.

Ulrich Balbach, CEO of Leuze

“

differentiation and focus. Only in this way are we able to help our customers succeed for the long term in a constantly changing industry. For us that is company philosophy, the promise of the Leuze brand and our objective all at once.

You just spoke about focus ... can you tell us what you are focusing on?

Ulrich Balbach: The best, most innovative technology is useless if it does not meet the needs of the customer.

We are therefore concentrating on our focus industries in which we have acquired in-depth application know-how and many years of experience. When these technological competences are applied to the relevant industry segments in a targeted fashion, this results in specific applications. For example, in the area of safety.

That means you view yourself as a safety expert?

Ulrich Balbach: Not only – we see ourselves as a safety expert and as a reliable partner for efficient sensor solutions. Our safety portfolio includes safety components, safety services as well as safety solutions for the entire lifecycle of the machine.

What is your latest development in the area of safety components?

Ulrich Balbach: Our latest safety innovation is our “Smart Process Gating” a space-saving access guarding on

conveyor lines, for which we also received numerous awards, such as the 2019 GIT SECURITY AWARD. Leuze thoroughly convinced right from the start in the area of safety at work through trend-setting inventions, such as the development of the very first protective sensor.

You just touched on safety solutions ... What exactly does Leuze mean by this?

Ulrich Balbach: The many years of experience in the use of safety-related applications and extensive knowledge of standards serve as the basis for our safety solutions. At the heart of every safety solution are the safety concepts qualified by us. For every safety solution, the requirements are gathered by our professional safety consultants and the solution individually tailored to the given system layout. We accompany the projects all the way through to the safety-related approval of the safety solution on-site.

Your focus on safety – is that the reason why your brand image is becoming increasingly yellow?

Ulrich Balbach: Our Leuze CI color is and remains red. But you have rightly noted: we are making increased use of the color yellow and the term “Safety at Leuze” in our public image and communications to show the wide range of products and services in the area of safety at work to our customers and the market. “Safety at Leuze” is representative for a well-matched product portfolio, extensive experience in safety consulting, in

engineering and design of safety solutions as well as our broad range of safety services. All of this for various aspects of different types of machines and systems.

Final question: In your viewpoint, what uniquely distinguishes Leuze?

Ulrich Balbach: The Sensor People stand for determination and passion for technological advancement and change. We see ourselves as forerunners who, together with our customers, create the innovations of tomorrow to make them successful for the long term in a constantly changing industry. Your success is our motivation. That was true in the past and will be so in the future as well.

CONTACT

Leuze GmbH + Co. KG

Owen, Germany

Tel.: +49 7021 573 0

info@leuze.com · www.leuze.com

PERSONAL PROTECTION

Additional Safety For Lone Workers

Budenheim Supports Staff With a Soloprotect Personal Safety Solution

The Budenheim company takes its name from the Rhine-based region of its founding, but today operates as a truly international chemical specialist. The company headquarters remain in the region (Close to neighbouring Mainz, Germany), but are now part of a number of additional production sites based around the world. Inevitably, some of the activities carried out by Budenheim personnel, require an element of lone working – often defined as working outside of eyesight or earshot from another colleague. Typically, this will involve maintenance or check procedures around product control, testing, and safety. Even employees not working in a high-risk environment, can face heightened risk in an emergency, due to working alone.

Keenly aware of its duty of care to staff wellbeing, and to prioritise occupational safety within the company, Budenheim invested in over twenty Soloprotect Solutions for use on site in Germany. Utilising the ‘Soloprotect ID’, workers are equipped with an ID badge form-factor, that is also a two-way communication device, giving 24/7 support to a worker if they need emergency assistance.

At the push of a button, a worker can raise an alert to a certified monitoring centre supplied as part of the solution, which in turn, can make a direct

escalation to on-site support in Budenheim’s emergency call centre. Emergency Services support can also be requested on the worker’s behalf, should the situation require the Police, Fire Service or an Ambulance.

Soloprotect is being used by staff in a number of different departments including production, the laboratory, logistics and by technical support staff. It is also used by facilities and security teams, to support ongoing facilities management, site diagnostics and site guarding – often outside of typical working hours during evenings and weekends.

24/7 Support, and Immediate Assistance

Work on the site ensures that some employees are mobile across the Budenheim facility, working alone at regular intervals – to carry out check procedures, maintenance, and inspections.

“If a team member has an unfortunate fall or injures themselves in some other way, we can locate them quickly with the Soloprotect ID and get them help immediately,” says Manfred Neuchel, Safety Manager at Budenheim, explaining the benefits of Soloprotect.

One of the employees regularly using a Soloprotect ID at Budenheim is David

Soloprotect ID can be useful where attempting to confirm a worker's location and therefore ideal for applications outside of typical working hours during evenings and weekends



Budenheim, a chemical company from the Rhine region, requires some of their personnel working alone and often outside of eyesight or earshot from another colleague

seen by others. If something were to happen to me there, no one would be able to find me so easily without the Soloprotect ID", he explains.

Always Within Reach

The Soloprotect ID is easy to use, with a single-button alert activation, and its proven technology that has been used by over 300,000 workers worldwide. It is also equipped with an 'Incapacitation' function, which allows an alarm to be raised automatically in the event a user suffers a slip or fall, or a serious health problem.

Soloprotect monitoring support gives users reassurance, and will manage any escalation requirements on their behalf, as part of the situation. The monitoring centre will continue to stay with a genuine red alert for the entirety of the situation.

Budenheim personnel were involved throughout solution implementation and onboarding, and adopted Soloprotect as part of their on-site, personal safety processes. The solution's 'amber alert' facility also allows a user to leave a short message through the device, detailing their

location on site. This is only listened to by a Soloprotect operator in the event of an alarm being raised, but it can be useful where attempting to confirm a worker's location. It is used in conjunction with the latest geolocation information, in support of the alarm handling process.

Peace of Mind

Patrik Giuliani is a chemical worker and safety expert at Budenheim. Among other things, he works alone in the 'bagging area', where products are filled into large bags. "It's a good feeling that Soloprotect could intervene immediately in an emergency."

In the past, Budenheim also used emergency signal systems to protect its employees. But their handling had the decisive disadvantage that the devices were too big to carry around all the time. Previously, Budenheim used an alternative system to promote staff safety – but the devices were deemed to be bulky, and more difficult to use by personnel: "In contrast to the old system, the Soloprotect ID is relatively small and it is easier to carry. And it just clips onto your clothes, which is perfect!", Patrik Giuliani adds.

Matthias Burghardt, a Budenheim team member working in the energy supply department, and a frequent lone worker, added that the investment made by the company does not go unnoticed by the workforce: "You can tell that Budenheim cares about the employees, which is a great feeling".

Engers. He works in the material ingredients unit, where plastics are processed and supplemented with additives, such as flame retardants or laser absorbers. "I am often alone in the plastics laboratory. This is a segregated area that cannot be

Utilising the 'Soloprotect ID', workers are equipped with an ID badge form-factor, that is also a two-way communication device, giving 24/7 support to a worker



CONTACT

Soloprotect

Essen, Germany

info@soloprotect.de

Tel.: +4969 2222 24833

www.soloprotect.de



PERSONAL PROTECTIVE EQUIPMENT

Safety Up, Costs Down

Holistic Concept Required

An integrated, cross-location concept for Personal Protective Equipment identifies potential savings and strengthens compliance with regulations

Many companies are starting to cut costs. Major expenditure is being scrutinised, including personal protective equipment (PPE). This is because consolidating PPE items and streamlining the associated procurement processes can reduce costs and increase safety at the same time. A holistic, cross-location concept is forming the foundation for this.

Reducing Uncontrolled Growth

The range of PPE products on the market has grown continuously over the last few years. In many companies, this has made the purchasing lists longer and more confusing. Often new products were added and employees also registered their special requests. Particularly in larger companies with several locations and decentralised purchasing, the lists and costs have grown wildly in many places. A consolidated and company-wide binding PPE standard catalogue and revised purchasing guidelines help to simplify PPE procurement and reduce special request orders down to a minimum. Health & Safety can also benefit from this, as only PPE that has been uniformly tested and reviewed is used.

Keeping Quality Standards High

To implement this successfully, it is important that all stakeholders concerned are involved and consulted in the decision-making process. Depending on the size of the company and its organisation, these may include, for example: strategic purchasers, company doctors, safety engineers, production managers, branch managers and, of course, the employees as wearers of

the PPE. Experience has shown that a sustainable consensus can be reached quickly, especially if quality standards are kept high and the employees are not only able to examine the solution but also to test it and wear it. To define the minimum requirements and protection classes, it is necessary to classify and cluster the workplace requirements throughout the whole company. This requires detailed inspections of the workplaces and a risk analysis. In addition, the complete PPE product portfolio as well as the associated ordering processes must be scrutinised to define a standard catalogue and uniform ordering processes.

Multistage Process

Staff should be involved in the project from a very early stage. However, sensitivity and tact are required. To increase the acceptance of the project, start with less critical product areas such as head protection and only deal with those areas that cause more work in the case of an upcoming product change at the end. A more complex topic is, for example, foot protection, because every foot is different. For the perfectly fitting safety shoe, the feet of the employees must be measured exactly and any health requirements must be checked and recorded – this is very time-consuming. When it comes to safety shoes, it often makes sense to offer two models to choose from. Shoes with a multiple-width system and different cushioning classes are particularly comfortable. These will accommodate both narrower and wider feet and can be adjusted to the body weight of the wearer. The design of the shoes also plays an important role. After all, shoes should also be appealing and, if possible, match

GIT
SECURITY
AWARD
2022
WINNER



Conditions of Participation on
www.security-award.com

APPLY
NOW!
CLOSING DATE
MARCH 31st, 2021

WILEY





Garant Tool24 PickOne (left) und
Garant Tool24 Locker (right)

Checklist: Consolidating PPE and optimising processes

- Set up a task force with all relevant stakeholders
- Analyse the current situation
- Set up cross-site clusters for working environments and hazards
- PPE product portfolio/ordering processes
- Define minimum requirements and protection classes
- Select supplier/consolidate the vendors list
- Standard catalogue: select product(s) taking corporate design guidelines into account
- Revise the purchasing guidelines
- Introduce PPE goods issuing machines
- Automate the ordering process

the corporate design of the company. The situation is different with hearing protection. Here, wearing comfort and quality are the most important factors. This also applies to hand, head, eye and respiratory protection. On the other hand, it is more difficult to choose protective clothing. After all, employees do not only want to be well protected and comfortably equipped, they want to feel comfortable and look good as well.

As wearing comfort is an important criterion for clothing being accepted by employees, all products should also be tested over a longer period by small pilot groups before they are included in the standard catalogue. A wearing test usually lasts four to six weeks. With an international workforce, it should be taken into account that ready-made sizes vary from country to country. For this reason, it is important to involve employees from all countries in the wearer tests and to provide intensive on-site support for European-wide projects. Also, it should be determined how many employees per department will

accompany the wearing test to achieve a representative result for the entire workforce.

Individual Look in a Uniform

As uniform work clothing also strengthens the feeling of employee loyalty and togetherness, more and more companies are also providing work clothing for their employees. Particular importance is attached to complying with the corporate design guidelines. However, employees should still have a choice. In the case of outerwear, for example, this could look like this: a T-shirt, a sweatshirt and a polo shirt are available; the employee can choose two tops. To emphasise the corporate identity, the clothing is usually finished off with the company logo. This can be done by direct embroidery, embroidery emblem, transfer printing and laser engraving. Which method of finishing is used depends on the requirements of the textiles: For example, embroidery is not suitable for a soft shell jacket.

Bundled Orders

After the PPE range, the procurement processes are also scrutinised, because often a greater bundling of the orders can also mean considerable potential for savings on the cost side. Specialist dealers with a very wide product range are ahead of the game here. However, because PPE requires a great deal of advice, the PPE cooperation partner should also have a professional advisor at their disposal. They should be able to answer any technical questions on site and actively support the subsidiaries in carrying out wear tests, be able to help with training and instructing employees. Special orders should also be possible to maintain the necessary flexibility. How the procurement process for Personal Protective Equipment can be made more efficient and accelerated by 75% is shown by the experience of Man Energy Solutions at its Zurich site. There, the Hoffmann Group was listed as the main supplier, orders were consolidated, the Garant Tool24 PickOne single issuing system was introduced and the procurement process for PPE was fully automated.

Fully Automated Processes

When a minimum stock level is reached, Garant Tool24 PickOne automatically sends an order to the Hoffmann Group. This

The way to find suitable shoes is by taking feet measurements and wearing tests



eliminates the need for purchase requisitions and individual orders. There is only one blanket order for a certain amount, which the automatically triggered orders are deducted from. If this amount has been used up, then the next blanket order is placed and the corresponding goods received posting is made. Any discrepancies between the quantities ordered and actually received are detected when the system is filled up. The PPE goes directly from goods received into the machine. The company has shortened the procurement process from five to eight days to two days. The Hoffmann Group delivers the goods within 24 hours after receiving the order. Garant Tool24 PickOne is then refilled by Man employees.

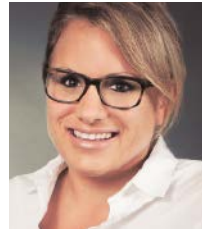
24/7 Availability

Goods issuing systems such as the Garant Tool24 PickOne also ensure that the required PPE is available around the clock. Also, with the help of integrated reporting, they make it possible to prove that

each employee was able to remove the PPE required for him/her at any time. In addition to this, user profiles can be created in such a way that the employees only have access to the PPE items approved for their respective area of work. This increases safety in the company.

Conclusion

Standardising the PPE items to be procured in a standard catalogue and consolidating supplier(s) combined with automating the procurement processes even further can lead to significant cost savings. Also, it is possible to ensure that only those PPEs that meet the safety requirements exactly are purchased. This increases occupational safety. In the case of transnational projects and an international workforce, the project should be accompanied by highly qualified local consultants who can assess country-specific characteristics and take intercultural aspects into account.



Author
Alexandra Kovacs,
Project Manager PPE
Hoffmann Group

CONTACT

Hoffmann SE
Munich, Germany
Tel.: +49 89 8391 0
info@hoffmann-group.com
www.hoffmann-group.com

Company Index

Abetechs	19	Euralarm	12	Leuze	56	Sepura	6, 12
Ajax	26	Fiera Milano	6	Mobotix	9, 31	Scurit Alarmitalia	18
Altronix	17, 35	Gallagher	9, 32	Morse Watchmans	40	Scuritalia	67
Apollo	50	Genetec	Inside Front Cover, 10, 16	Motorola Solutions	10	SimonsVoss	21
Assa Abloy. Front Cover, 15, 28, 31, 39		Global Fire Equipment	31, 45	Narda	35	Slat	9, 37
Axis	37, 66	Gunnebo	6, 12	Nedap	12, 25	Solo protect	58
Boon Edam	10	Hanwha Techwin	6, 25, 35	ONVIF	14	Sorhea	18, 22
Bosch Building Technologies	37	Hikvision. 8, 18, 52, Outs. Back Cover		Optex	18	STid	33, 38
BSIA	9, 13	Hoffmann Group	60	PAC	36	Süd-Metall	37
Cias	18	Idis	12	Primion	66	Uhlmann & Zacher	35
Comnet	25	Iloq	12, 25	Puretech	13	Wagner	47, 54
Dahua	10, 35	Innosent	24, 31	Qognify	30	Zenitel	9
Eagle Eye	6	Johnson Controls / Tyco	6, 66	Salto	11, 34		
Eizo	13	Ksenia	7	Securiton	25		

Imprint

Published by

Wiley-VCH GmbH
A Company of John Wiley & Sons, Inc
Boschstrasse 12 · 69469 Weinheim
GERMANY
Tel.: +49 (0) 6201 606-0 · Fax: -791
info@gitverlag.com · www.gitverlag.com

Managing Directors

- Sabine Haag
- Dr. Guido F. Herrmann

Publishing Directors

- Dr. Heiko Baumgartner
Tel.: +49 (0) 6201/606-703
heiko.baumgartner@wiley.com

- Steffen Ebert
Tel.: +49 (0) 6201/606-709
steffen.ebert@wiley.com

Sales Managers

- Miryam Reubold
Tel.: +49 (0) 6201/606-127
mirreubold@wiley.com
- Dr. Michael Leising
Tel.: +49 (0) 36 03/8942800
leising@leising-marketing.de

Wiley GIT Reader Service

65341 Eltville / Germany
Tel.: +49 6123 9238 246
Fax: +49 6123 9238 244
E-Mail: WileyGIT@vuser-service.de
Our service is available for you from
Monday to Friday 8 am – 5 pm CET

Editorial

• Lisa Holland M.A.
Tel.: +49 (0) 6201/606-738
lisa.holland@wiley.com

• Matthias Erler
+49 (0) 6129 5025300
matthias.erler@wiley.com

Editorial Assistant

• Eva Kukatzki
Tel.: +49 (0) 6201/606-761
eva.kukatzki@wiley.com

Production

- Jörg Stenger
- Andi Kettenbach (Layout)
- Elli Palzer (Lithography)
- Claudia Vogel (Sales Administrator)

European Representatives

- Dave Harvett, Direct Media
Tel.: +44 (0) 121 705 2120
daveharvett@btconnect.com
- Oliver Haines, Impressive Marketing
Tel.: +44 (0) 1743 369611
impressive.marketing@virgin.net

Bank Account

J.P. Morgan AG, Frankfurt
Account No.: 6161517443
Routing No.: 501 108 00
BIC: CHAS DE FX
IBAN: DE55501108006161517443

GIT SECURITY is published 4 times per year.

Subscription 2021

4 issues 55.00 €, single copy 16.30 € plus postage. Pupils and Students receive a discount of 50 % at sight of a valid certificate. Subscription orders valid until cancelled, notices 6 weeks before end of the year. Subscription orders can be revoked within 1 week in writing. Dispatch complaints are possible only within 4 weeks after publishing date.

The publishing house is granted the exclusive right, with regard to space, time and content to use the works/ editorial contributions in unchanged or edited form for any and all purposes any number of times itself, or to transfer the rights for the use of other organizations in which it holds partnership interests, as well as to third parties. This right of use relates to print as well as electronic media, including the Internet, as well as databases/data carriers of any kind.

All names, symbols etc. mentioned and/or printed in this issue may be registered trademarks of their respective owners.

Print run: 20,000

Printed by

westermann DRUCK | pva
Printed in Germany | ISSN 2190-4367



SECURITY MANAGEMENT

Security Management



deister electronic GmbH
Hermann-Bahlsen-Str. 11
D-30890 Barsinghausen
Tel. +49(0)5105/516-01 · Fax +49(0)5105/516-217
info.de@deister.com · www.deister.com
access control; vehicle identification;
biometric verification; guard tour systems;
storing and management of keys and valuables

Security Management



Funkwerk video systeme GmbH
Thomas-Mann-Str. 50 · D-90471 Nürnberg
Tel. +49(0)911/75884-0
Fax +49(0)911/75884-100
info@funkwerk-vs.com · www.funkwerk.com
CCTV, system solution, system integration,
video monitoring security, building management

Be Part of the Section



Just send a mail to
heiko.baumgartner@wiley.com
We will be glad to advise you!

Security Management



Ksenia Security s.r.l.
Strada Provinciale Valtesino, 49
63065 Ripatransone (AP), Italy
Tel. +39 0735 751646 · Fax +39 0735 652281
info@kseniasecurity.com · www.kseniasecurity.com
Security & Home Automation: We connect homes
by re-inventing security products and solutions

Security Management



NSC Sicherheitstechnik GmbH
Lange Wand 3 · D-33719 Bielefeld
Tel. +49(0)521/13629-0 · Fax +49(0)521/13629-29
info@nsc-sicherheit.de · www.nsc-sicherheit.de
Fire Alarms, CCTV, Voice Alarm Systems

ALARM MANAGEMENT

Alarm Management



Digisound Electronic GmbH
Oststraße 54 · D-22844 Norderstedt
Tel. +49(0)40/526869-0 · Fax +49(0)40/526869-13
contact@digisound.de · www.digisound.de
Acoustic buzzers, piezo-electric sounders,
electronic beacons, speakers, and transducers

Facility Security



deister electronic GmbH
Hermann-Bahlsen-Str. 11
D-30890 Barsinghausen
Tel. +49(0)5105/516-01 · Fax +49(0)5105/516-217
info.de@deister.com · www.deister.com
access control; vehicle identification;
biometric verification; guard tour systems;
storing and management of keys and valuables

Facility Security



Dictator Technik GmbH
Gutenbergstr. 9 · D-86356 Neusäß
Tel. +49(0)821/24673-0 · Fax +49(0)821/24673-90
info@dictator.de · www.dictator.de
Drive units, hold open systems and smoke detectors,
door control solutions

Facility Security



SimonsVoss Technologies GmbH
Feringastr. 4 · D-85774 Unterföhring
Tel. +49(0)89/99228-180 · Fax +49(0)89/99228-222
marketing-simonsvoss@allegion.com
www.simons-voss.de
Digital locking and access control, intelligent locking components with the latest software. System 3060 plants fulfill highly complex requirements in large buildings. They are simply and quickly expandable and work consistently wireless.

Facility Security



Walter Wurster GmbH
Heckenrosenstr. 38-40
D-70771 Leinfelden-Echterdingen
Tel. +49 (0) 711/949 62-0
kontakt@wurster-online.de · www.wurster-online.de
Money handover systems fire resistant up to F90 and bullet resistant up to FB7, cash trays, cash-drawers and facade counters to pass through money, valuables, documents and for installation in high-security areas, banks, petrol-stations, pharmacies, sports – and cultural sites indoors and outdoors.

Video Technology

VIDEO TECHNOLOGY



Abetechs GmbH (Grundig Security)
Steinhof 39 · D-40699 Erkrath/Germany
Tel: +49 211 5380 6832
info@grundig-security.com · www.grundig-security.com
The impressive new GRUNDIG Security IP range covers everything required in modern, professional video surveillance applications.

Video Technology



Axis Communications GmbH
Adalperostr. 86 · D-85737 Ismaning
Tel. +49 (0)89/35 88 17 0 · Fax +49 (0)89/35 88 17 269
info-de@axis.com · www.axis.com
Network security solutions:
Axis is technology leader in network video and offers intelligent security solutions.

Video Technology



Dallmeier electronic GmbH & Co. KG
Bahnhofstr. 16 · 93047 Regensburg
Tel. +49(0)941/8700-0 · Fax +49(0)941/8700-180
info@dallmeier.com · www.dallmeier.com
Video security technology made in Germany:
multifocal sensor technology Panomera®,
IP cameras, recording servers, intelligent video analysis, video management software

Video Technology



VIDEO SECURITY & NETWORK GMBH
Your reliable partner for professional video surveillance
DEKOM Video Security & Network GmbH
Hoheluftchaussee 108 · 20253 Hamburg
Tel. +49 (0) 40 47 11 213-0 · info@dekom-security.de
Member of Dallmeier
www.dekom-security.de · www.dekom-security.at

Video Technology



EIZO Europe GmbH
Belgrader Straße 2 · 41069 Mönchengladbach
Tel.: +49 2161 8210 0
info@eizo.de · www.eizo.de
Professional monitors for video surveillance with visibility enhancement technology and 24/7 use, IP decoding solutions to connect IP cameras without any computer.

TIME ACCESS

Time + Access



PCS Systemtechnik GmbH
Pfälzer-Wald-Straße 36 · 81539 München
Tel. +49(0)89/68004-550 · Fax +49(0)89/68004-555
intus@pcs.com · www.pcs.com
time recording, access control, BDE/MDE, biometric, video, SAP, Vein Scanner

Video Technology



High Definition Video

www.luna-hd.de

Time + Access



Cichon+Stolberg GmbH
Wankelstraße 47-49, 50996 Köln
Tel. +49(0)2236/397-200 · Fax +49(0)2236/61144
info@cryptin.de www.cryptin.de
Operational data collection, time recording, access control

Time + Access



Die richtige Verbindung

phg
Peter Hengstler GmbH + Co. KG
D-78652 Deißlingen · Tel. +49(0)7420/89-0
datentechnik@phg.de · www.phg.de
RFID components for access control, timekeeping, factory data collection, canteen data, leisure applications, surface-mounted devices, flush-mounting components, biometrics, identification media and accessories

Be Part of the Section



The Purchasing Section for direct contact

Just send a mail to
heiko.baumgartner@wiley.com

We will be glad to advise you!

Wiley Industry Days

WIN DAYS

7.-9. June 2021

Register for free

www.WileyIndustryDays.com

Time + Access




primion Technology GmbH
Steinbeisstraße 2-4 · D-72510 Stetten a.K.M.
Tel. +49(0)7573/952-0 · Fax +49(0)7573/92034
info@primion.de · www.primion.de
Time management, access control and management, staff deployment planning, graphic alarm management, SAP communications solutions, pass and ID card production, Biometrics

Video Technology

Panasonic BUSINESS


Panasonic Marketing Europe GmbH
Hagenauer Straße 43 · 65203 Wiesbaden · Germany
info@panasonic.business.co.uk
www.panasonic.business.com/security-solutions
High-quality CCTV solutions (IP & analogue), Video Automation and IA, Sophisticated technologies (FacePro, people masking), Cyber Security Protection for GDPR compliance, VMS: Video Insight

Time + Access



deister electronic GmbH
Hermann-Bahlsen-Str. 11
D-30890 Barsinghausen
Tel. +49(0)5105/516-01 · Fax +49(0)5105/516-217
info.de@deister.com · www.deister.com
access control; vehicle identification; biometric verification; guard tour systems; storing and management of keys and valuables

Time + Access



Electronic Identification

STid EMEA Headquarter
20, Parc d'activités des Pradeaux
13850 Greasque · France
Tel: +33 (0)4 42 12 60 60 · Fax: +33 (0)4 42 12 60 61
stid-security.com
access control, mobile access, electronic identification, mobile ID readers, vehicle access

Video Technology



SANTEC

Santec BW AG
Womgermühle 1 · 58540 Meinerzhagen
Tel. +49 2358/905 450 · Fax +49 2358/905 499
santec_info@burg.biz · www.santec-video.com
Video monitoring technology · Video-over-IP
Outdoor IR sensors · Planning and Services

Time + Access

FEIG

FEIG ELECTRONIC GMBH
Lange Straße 4 · 35781 Weilburg
Tel. +49(0)6471/3109-44 · Fax +49(0)6471/3109-99
sales@feig.de · www.feig.de
RFID Readers (LF, HF, UHF) for access control, vehicle identification, perimeter protection, payment systems and much more

FIRE PROTECTION

Video Technology



Intelligent Video Analytics

Securiton GmbH
IPS Intelligent Video Analytics
Kronstadter Str. 4 · 81677 Munich · Germany
Tel. +49 (0)89 4626168-0 · Fax +49 (0)89 46261688
info@ips-analytics.com · www.ips-analytics.com
Manufacturer of high-end video management software and intelligent video analytics software for real-time detection of potentially dangerous situations

Time + Access

Gantner

GANTNER Electronic GmbH
Bundesstraße 12 · 6714 Nüziders · Austria
Tel. +43 5552 33944
info@gantner.com · www.gantner.com
access control solutions/biometrics, time management, data capture, locking systems

Fire Protection

ESSER
by Honeywell

Novar GmbH a Honeywell Company

Dieselstraße 2 · D-41469 Neuss
Tel.: +49(0)2131/40615-600
Fax: +49(0)2131/40615-60
info@esser-systems.com · www.esser-systems.com
Fire Alarm systems, voice alarm systems, emergency lighting systems, security systems

Fire Protection

HEKATRON
Ihr Partner für Brandschutz

Hekatron Vertriebs GmbH
Brühlmatten 9 · 79295 Sulzburg
Tel. +49(0)7634/500-0 · Fax +49(0)7634/6419
info@hekatron.de · www.hekatron.de
Fire alarm systems, Smoke switch systems,
Smoke alarms, Safety linkage systems

Be Part of the Section

GIT BusinessPartner
The Purchasing Section for direct contact

Just send a mail to
heiko.baumgartner@wiley.com
We will be glad to advise you!

POWER SUPPLIES

Fire Protection



Labor Strauss Group
Headquarters: Wiegelestraße 36, 1230 Vienna, AUSTRIA
Tel.: +43 1 521 14-0
office@lst.at · www.laborstrauss.com
The specialists for fire detection systems and
extinguishing control systems

PLANT SAFETY

Plant Safety

PEPPERL+FUCHS

Pepperl+Fuchs AG
Lilienthalstraße 200 · 68307 Mannheim
Tel. 0621/776-1111 · Fax 0621/776-27-1111
fa-info@de.pepperl-fuchs.com
www.pepperl-fuchs.com
Security sensors, inductive, capacitive, opto-
electronic and ultrasonic sensors, vision sensors,
identification systems, interface modules

Power Supplies

NSGate

NSGate
2F, No.53-16, Shcherbakovskaya Street,
105187 Moscow, Russia
Tel.: +7 495 139 6903
www.nsgate.eu · sales@nsgate.com
UPS 150-500VA, off-grid solar systems, outdoor access
Nodes NSBox; Climatic control system inside enclosure:
Thermostats, Heater, Thermoelectric Cooler; Industrial PoE
switches, Ethernet extenders, 4G LTE Routers

Wiley Industry Days

WIN DAYS

7.-9. June 2021

Register for free

www.WileyIndustryDays.com

Power Supplies



SLAT
Builder of energy continuity
11, rue Jean Elysée Dupuy
69410 Champagne au Mont d'Or – France
Tel. +33(0)478 66 63 60 · Fax +33(0)478 47 54 33
www.slat.com · comm@slat.fr
fire detection, voice alarm, acces control, intrusion,
outdoor video surveillance, building automation

Tyco Illustra Flex Multi-Sensor Camera



Johnson Controls has further expanded its Tyco Illustra range with the launch of a new Flex multi-directional camera. Designed to provide a highly cost-effective solution for monitoring activity over wide open spaces, the second generation Illustra Flex multi-directional camera is equipped with four separate image sensors which can be individually positioned and angled to provide up to 360-degree coverage via four separate non-stitched video streams. Each of the four sensors are able to capture superb quality 4MP images, enabling the camera to cover an area which might normally require four separate high definition video surveillance cameras. As well as the reduced capital cost, systems integrators and end-users can enjoy additional time and cost savings, as Illustra Flex multi-directional camera requires less cabling and mounting hardware. It also only needs a single IP connection. <https://illustracameras.com>

New Business Unit Manager at Primion DIGITEK

Javier Alonso is the new business unit manager of primion Digitek sl, based in Madrid and Barcelona, as of 1 January 2021. He reports directly to the managing director of the Azkoyen Time and Security Division, Jorge Pons. Javier Alonso, who holds a master's degree in Business Administration, Management as well as Electrical Engineering, has more than 15 years of experience in project management. His focus will be on defining the processes for business development in access control, time and attendance and hazard management. He will also focus on project and operational management, sales management and, of course, the requirements of customers and partners in Spain to drive the growth of the company. Jorge Pons wishes the new head of the Spanish business unit much success in his future tasks: "We are very pleased to have an experienced colleague on board with Javier, who knows the Spanish market and can drive the business forward in this market".

www.primion.de

Network Video Intercom for Demanding Situations

Axis Communications has announced a highly robust, vandal-resistant network video intercom. Designed for two-way communication, video identification, and remote entry control, the Axis I8016-LVE network video intercom is ideal for surveillance in complete darkness and demanding situations. With a 5 MP security camera and audio with echo and noise cancellation, it ensures reliable identification even in the most demanding situations. An invisible IR night vision function enables clear identification of visitors, 24/7. The network intercom, based on open standards and interfaces, is robust, vandal-resistant IK10-rated and fits into standard installation boxes. It can be integrated with other systems and solutions such as video management, access control, and VoIP communication. www.axis.com



www.axis.com



Name: Lucio Mattielli

Position, Company:
Chief Security Officer,
Sicuritalia Group

Date of Birth: 30th May 1980

Hometown: Napoli, Italy

Favorite homemade dish:
Lasagna

- 1. When I'm stressed I** wear my boxing gloves and go to the gym.
- 2. My biggest struggle on a workday is** to find a good coffee and reconcile the agenda meetings with the time zones of different countries.
- 3. I can never resist** the warm waters of the Indian Ocean.
- 4. My biggest motivation is** my daughter.
- 5. The natural talent I would like to be gifted with is** to do apnea diving up to -100 meters.
- 6. Guaranteed to make me laugh is** to see men wearing white socks under their sandals.
- 7. I have the completely useless talent of** painting unicorns.
- 8. Three things that I am most grateful for in life are** my daughter, health and friends.
- 9. The best compliment anyone has ever given to me is** "you're the best mentor I have ever had".
- 10. If my life was a movie, I would be portrayed by** Christopher Nolan.
- 11. I am entering the wrestling arena and while the crowd is calling out my wrestling name "BulletproofLucio", I can hear the song "you know my name" by Chris Cornell playing!**
- 12. At the most horrible job I ever had I** stayed true to myself, worked the way I always did and learned from the wrong people what should never be done.
- 13. The language I would most like to speak is** Chinese **and I pretend to know how to speak** Russian.
- 14. The biggest challenge for me/my industry at the moment is** to manage the convergence between physical security and digital security to deal with emerging threats using the skills of young talent and the experience of veterans.
- 15. When I have done something forbidden** my face turns purple except when I eat chocolate under the table with my daughter, you can only see me smiling.
- 16. The last thing/gadget I bought was** a bluetooth speaker to listen to music while I work.
- 17. As a child I was teased, because I** used to wear a little tie.
- 18. The most hideous/favorite piece of clothing I own is** my father's vest. He wore it when he led the family business. It is a source of strong managerial inspiration.
- 19. As a child I collected** Japanese manga, I've always been fascinated by different cultures.
- 20. From the first money I earned I bought** a car for my mother.
- 21. If I was trapped in a skyscraper for one night, I would relax and spend the night** looking at the stars.
- 22. I was utterly perplexed when** I have seen an unknown virus change the way we live forever.
- 23. I would like to have the superhero superpower of** going back in time and try to resolve world conflicts through diplomacy.
- 24. My first bicycle was** a red BMX and I used it every day for ten years to go to school.
- 25. I had the opportunity to shake hands with** Kofi Annan, shortly after his nobel for peace.

Off the Record

Get to Know Inspirational Characters of the Security Industry in GIT SECURITY's Series

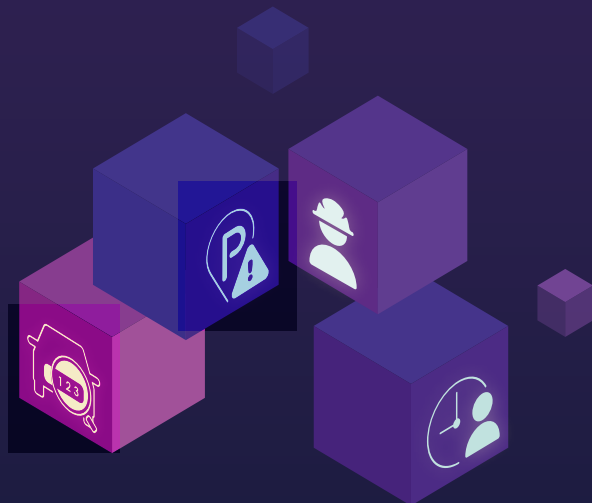


Deep Business

Enhancing Safety for Your Workers

We provide Modular AI Applications for
factories and warehouses:

- Hard Hat Detection
- Automated Event Alert
- Perimeter Protection
- ANPR
- Illegal Parking Detection



Hikvision Headquarters

T +86 571 88075998
overseasbusiness@hikvision.com



@HikvisionHQ



@HikvisionHQ



@Hikvision

www.hikvision.com