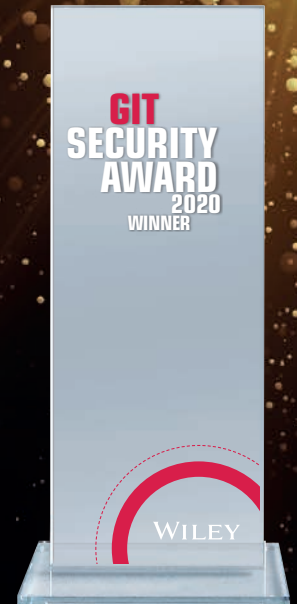


GIT SECURITY AWARD

GIT SECURITY AWARD 2020 – The Winners

It's that time again: The winners of the GIT SECURITY AWARD 2020 have been confirmed. The editorial team will present the top three products in categories A to F.



Category A

IT Security and Safety for Automation, Cyber Security

Phoenix Contact: ImpulseCheck

Assistance System for Surge Protection

ImpulseCheck is the first assistance system for surge protection in the field of mains protection. The system consists of the IPCH-4X-PCL-TCP-24DC-UT measuring system, the sensors and the Impulse Analytics application in Proficloud. The current status of the surge protection can be called up online at any time. In addition to monitoring the surge protective devices, ImpulseCheck also offers a simple and comprehensive analysis of the system EMC. The time-accurate detection of electromagnetic disturbances on the supply lines allows conclusions to be drawn about their cause. Possible disturbance variables are detected before there is a failure in the system. Service and maintenance operations can thus be better planned.



1st
Place

Schmersal Group: SLC440/COM Safety Light Curtain with BLE

The SLC440/COM with Bluetooth BLE is an Active Optoelectronic Protective Device (AOPD) that makes all status and diagnostic data on the operating status available on smartphones or tablets via a Bluetooth interface. Bluetooth Low Energy (BLE) is a radio system for near-field data transmission with secure transmission technology. This status information and diagnostic data enables processes to be reactivated more quickly, particularly in the event of a system shutdown. All operating data can be stored and is available for further processing. The Bluetooth interface also supports easy start-up using the integrated setup aid. The transmission of data to smartphones or tablets (Android, iOS) is facilitated by an app developed by Schmersal.

2nd
Place



Pizzato: P-Kube Krome

Multifunctional Safety Handle for Industrial Automation

P-Kube Krome is a multifunctional safety handle for industrial automation and is mounted together with safety switches on right/left side doors or sliding doors of the guards of machinery or applications. It is fully compatible with the NG or NS series; the combination complies with EN ISO 14119. The handle includes the area for RFID actuators, an ergonomically positioned illuminable push-button, as well as bright RGB LEDs integrated into the handle length. The LEDs can be activated in the colors green, yellow, red, blue, white, purple and light blue. The connection is made via only one cable. Despite the high stability of the handle, attention was paid to a tamper-proof and attractive modern design.

3rd
Place



Category B

Fire and Explosion Protection, Industrial Safety

Bosch: Aviotec

Video-based Fire Detection

Video-based fire detection Aviotec is the first and so far only VdS-certified, innovative solution for reliable early fire detection. It is particularly suitable where standard systems reach their limits, e.g. warehouses, production halls, hangars and extensive building complexes. Unlike common fire detection, flames or smoke are detected directly at the source. Challenges, i.e. delayed smoke or heat development up to the ceiling or inversion situations are hereby mastered. Aviotec is mainly used in buildings with high ceilings as well as dusty and humid environments. Due to rising fire loads and stricter fire protection requirements, Aviotec opens up new ways of a protection concept, which are increasingly rewarded by insurance companies.



1st
Place

Hikvision: DS-2TD2466T-25X

Explosion-Proof Thermal Network Bullet Camera

This camera uses a vanadium oxide uncooled focal plane sensor to enhance thermal image quality. It adopts 316L stainless steel material to meet the requirements of explosion-proof environments. The camera offers leading image processing technology like Adaptive AGC, DDE, NETD. The powerful behavior analysis algorithm includes line crossing, intrusion, region entrance & exit, a reliable temperature exception alarm function. The advanced fire detection algorithm works with 640*512 resolution



2nd
Place

Asa Abloy: ePED

Escape Door Display Terminal

The design-oriented escape door solution ePED is a solution for an optimum operation of an electrically controlled escape door system. The first escape route system with touch display in the terminal replaces 4 modules: key switch, emergency button, illuminated pictogram and time delay display.

This reduces the wiring effort and concentrates the functions in one element. The situational display of the function makes it easier to operate in case of emergency. It can be integrated easily into the door technology thanks to the HiO bus. All relevant information such as door status, operation, technical details and maintenance information is accessible via the display.

3rd
Place



Alle Gewinner:
<https://bit.ly/2Q3nKSy>

GIT
SICHERHEIT
AWARD
2020
WINNER

Eine vollständige Übersicht über alle Gewinner finden Sie hier:

<https://www.git-sicherheit.de/topstories/security/git-sicherheit-award-2020-die-gewinner-0>

Wir von Wiley und **GIT SICHERHEIT** bedanken uns ganz herzlich für das Engagement von Anmeldern und Abstimmern – und freuen uns schon jetzt auf die Innovationen im nächsten Jahr.

Seien Sie dabei. Stimmen Sie entweder??? ab.

Oder, wenn Sie selbst ein **Produkt anmelden** oder empfehlen möchten, tun Sie dies gerne **ab sofort** – bis spätestens **xx. März 2020** auf www.sicherheit-award.de.

Category C

Video Security Systems (VSS)

Axis: P3807-PVE

Multisensor Panoramic Cameras

The Axis P3807-PVE IP-Camera uses four sensors to provide a seamless 180° horizontal and 90° vertical overview, with 8,3 MP resolution at full frame rate. Thanks to the Axis T94V01C Dual Camera Mount accessory it is easy to receive a full 360° coverage by using two cameras. Compared with video surveillance solutions using multiple cameras, the Axis P3807-PVE provides a lower total cost of ownership as multi-sensor cameras reduce the number of cameras needed, decreasing the costs associated with installation, cabling and cost for video management software licenses. Additionally, the device-based stitching of the four sensors makes the video stream ideal for analytics. The camera is extremely useful for covering large and wide areas in transportation (train stations), commercial and city surveillance (town centers, parks) sectors.

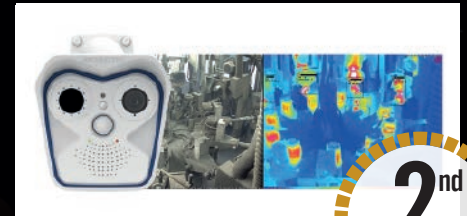


1st
Place

Mobotix: M16

Thermal Imaging Dual Camera

The weatherproof thermal camera M16 detects and reports objects and people based on the thermal signature - even in absolute darkness and over several hundred meters. The system is based on the modular M16 series and can be supplemented with a high-resolution optical sensor module on request. In addition to the compact design and the flexible mounting options, there are also the intelligent Mobotix video functions. The MxActivitySensor enables almost error-free detection of moving objects. The M16 Thermal can automatically send a message as soon as the temperature in defined measurement windows deviates from the standard range. It is therefore also used for the early detection of life-threatening heat sources.



2nd
Place

3rd
Place



AG Neovo: QX-Serie / QX Series

4K/UHD Displays for 24/7 Operations

The QX Series of 4K/UHD monitors was designed by AG Neovo for surveillance, control panel and digital signage applications and is available in the sizes 24", 24", 24", 32", 43" and 55". As usual for AG Neovo, this series can be expected to have very long product life cycles. In addition to AG Neovo's unique selling points such as the NeoV protection and filter glass, the Anti-Burn-In function, metal-case and the rigorous 24/7 design, the innovative multi-screen display will

inspire. Up to four 1080p signals can be displayed simultaneously. Real-time monitoring in control rooms, management centers, emergency centers and other public and industrial facilities are visualized in a professional way.

Category D

Access Control, Intruder Alarm, Perimeter Protection



Keyprocessor: Juno IoT Controller

The Juno controller has especially been developed by Keyprocessor for „passive“ technical locations. These are often street cabinets that contain critical infrastructure such as converging fibre-optic cables, but where there is no power and network. Juno combines access control with the monitoring of environment variables and enables operations managers of critical

infrastructures in remote locations to check the status of several passive locations. Communication between the controller and the centralized software runs via a wireless connection. Juno is an IoT controller, suitable to communicate over Lora, NB-IoT, or LTE-M network. These are special networks to send and receive small volumes of data.

1st
Place

3rd
Place



Siemens: Siveillance Perimeter Multi Alarm System

Siveillance Perimeter supports the qualification of incidents with a map- and graphic-based operating level. Alarms are visualized and evaluated. This way, you can react in a fast and targeted manner – even when several incidents happen simultaneously. Complex scenarios and sector concepts can be displayed via a graphic formula editor. With this, even specific demands of properties are met. The connection and operation of sensors are independent from specific manufacturers. Thanks to definable modes of operation, the system behavior can be ad-

justed with just a click. These modes of operation define how detected incidents are evaluated and when alarms are triggered. Security levels are determined and stored in the system – so performance always runs smoothly.



Dom: Eniq Guard Digital Door Handle

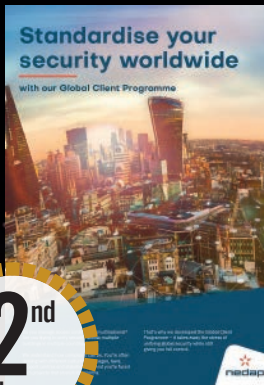
Eniq Guard is a digital door handle. It offers solutions for many different door situations with its variety of variants. Due to its robustness, it also offers very good protection against vandalism. It is used in areas with much public traffic and where access control with high ease of use and attractive design is required, e.g. in hospitals, banks or hotels. Eniq Guard is a digital integration product that allows the user to choose the programming method (e.g. Offline, Online, Eniq App, Data on Card, Easyflex). It is easy to integrate into the existing Dom access management world „Security Ecosystem“, but also into those of third parties.

Category E

Safety and Security Management, Services and Solutions

Nedap: Global Client Programme Progressive Project Rollout System

The Global Client Programme is a progressive project rollout system managed by Nedap. A cost-effective, efficient framework for standardising security across all your buildings, it also gives the flexibility to future-proof access control. Large, renowned companies are using The Global Client Programme to easily implement, maintain and update Aeos across multiple international sites. Nedap takes care of project management and local coordination centrally, with the support of local installation and service partners. The key benefits of using the programme rather than handling a global security rollout internally are the ease of achieving both international standardisation, flexibility, scalability, cost efficiencies and faster implementation.



2nd
Place

1st
Place

Advancis: Winguard X4

Open Architecture PSIM Platform

Winguard X4 is an open architecture PSIM platform, linking security, building and communication management systems of different manufacturers and supporting the user in event processing. The platform is scalable from a single workstation system to an internationally cross-linked control centre and can be extended anytime by further servers, clients, function, and interface modules. Currently, over 400 interface drivers are available; in addition, development of new interfaces is possible as well. The user interface is available in more than 20 languages. The recent version Winguard X4 meets the rapidly increasing demands on modern control centres, offering in particular innovations in the field of IT security/cyber security.



Nelysis: Vanguard

Network Cyber Management System

Thanks to its AI algorithms, the Vanguard NCM (Network Cyber Management) system monitors the entire network and detects intrusions, mitigating automatically their effects. Whether it is a critical infrastructure or a small-/medium-sized Business with important assets to protect, Vanguard is the answer to the fast evolving world of IT security. It provides cyber security protection for the entire network at once, including IoT like CCTV cameras, access control/intrusion alarm/fire detection devices. Vanguard reads in real time all low-level network traffic and detects behavior anomalies. Since it is not based on digital signatures, it can detect new threats.



3rd
Place

Category F

Special Category Smart Home

1st
Place



Ksenia: Domus

In-Wall Multi-Function Sensor

Domus is an in-wall multi-function sensor with Keystone opening which permits, for every room, to have at the same time a motion detector, a temperature and humidity sensor and a lux sensor. Useful device in any domotic environment, it allows, in combination with the module auxi-L, also from the security company Ksenia, to switch-on and off any light according to the inside luminosity only when someone is inside the room – this saves energy. It's equipped with a digital temperature and humidity sensor (produced by Sensirion) able to allow the management of an air conditioning or a dehumidifier for the desired level of comfort. It becomes very useful for any office environment or for example necessary in museums for the proper conservation of art-masterpieces.

Essence Security: Wer@home

Smart Home Platform For Service Providers

The platform Wer@home Professional Security allows monitoring companies the flexibility to offer their customers a total home monitoring experience with professional installation as well as advanced business models such as professional monitoring on demand. In addition to existing Basic and Premium service levels for end-users, Wer@home now includes a professional service level that incorporates many requirements of professional installation and guarding. This includes definition of new users; Technician, Installers and Guards. Monitoring companies can now give permanent and temporary permissions to their dealer and installer network to install and register new customers.



2nd
Place

Provi Alarm: Elock 2

Wireless Locking Cylinder FZA - Wireless Arming Cylinder

In compliance with VdS-inevitability, the Silenya Advanced radio-controlled cylinders allow the alarm system to be controlled, partially armed, armed and disarmed. In contrast to other conventional systems, a radio cylinder with a range of up to 40 meters is enrolled directly to the radio module of the alarm system. Additional modules and cabling are obsolete. The very easy programming of up to 32 transponders can be realized with the master transponder system. For up to 4500 users and time and calendar function, the PC-programmed version is provided. The disabling of alarm transponders is also possible online. The system links house automation and video verification via scenarios as needed.



3rd
Place